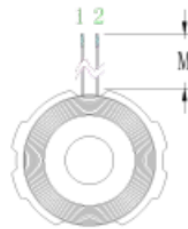
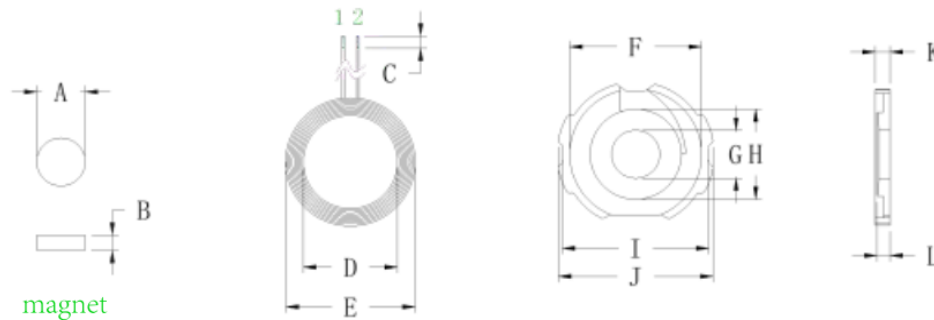


I. Plane structure drawing: Unit: MM



A	7.7 ± 0.05
B	2.0 ± 0.05
C	2 ± 1
D	14 ± 0.2
E	20.5 ± 0.5
F	2.1 ± 0.2
G	7.7 ± 0.05
H	13.5 ± 0.2
I	23.5 ± 0.3
J	25 ± 0.3
K	2.5 ± 0.1
L	2.25 ± 0.1 center column height
M	60 ± 1

II. Product Parameters:

foot position	Line diameter	number of turns	remarks
1 - 2	0.08*24	14	hot air stranded wire

III. Technical Requirements:

1. Fix the end of the thread to prevent the thread from loosening and disconnecting.
2. According to customer requirements, cut the excessively long wire ends and tin them, and the tinning depth is unified as 2 ± 1 mm
3. Dot appropriate white glue on the soft magnetic sheet, paste the coil, and ensure that the surface of the product is clean and tidy during the process
4. Additional process (according to customer requirements): the finished product is not assembled with magnets, it will be delivered separately, and the back of the finished product will not be affixed with double-sided tape

IV. Electrical parameters:

1. Intance value, Q value:

$$\text{PIN } 1 - 2 = 8.1\mu\text{H} \pm 0.2\mu\text{H}$$

The Q-value: 35

The above inductance value is the quanhua 1062A instrument, with 10KHZ/0.3Vrms as the standard or equivalent instrument.

The Q value is on the Quanhua 1062A instrument, with 100KHZ/0.3Vrms as the standard or equivalent instrument

V. List of Materials:

numb er	name	material quality	supplier	remarks
1	hot air stranded wire	0.08X 24	Ui ghur or equi val ent	
2	magnetic sheet	G 25 soft substrate	Tiantong or equivalent	
3	tin	High temperature environmental protection	Thousand islands or equivalent	
4	whi te glue	BY 882	Baoyue or equi val ent	
5	Strong magnetic	7.7 * 2 (Strength greater than 3000GS)	Li ansheng or equi val ent	Shi ppi ng, not assembled
6	casing	0.8*20MM		right one