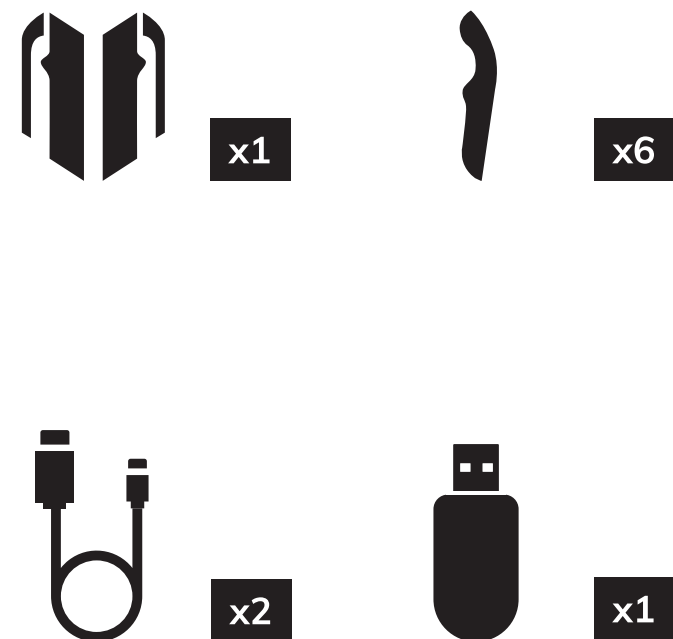
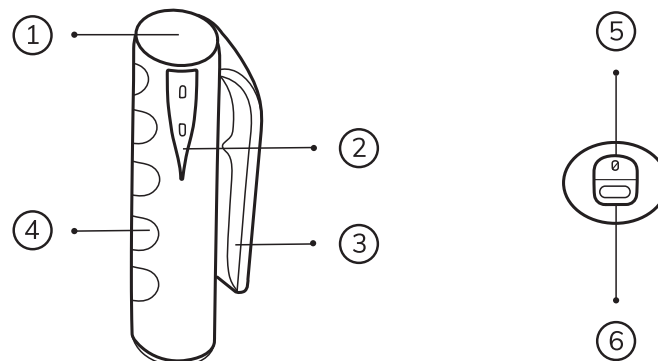


1 Inside the box

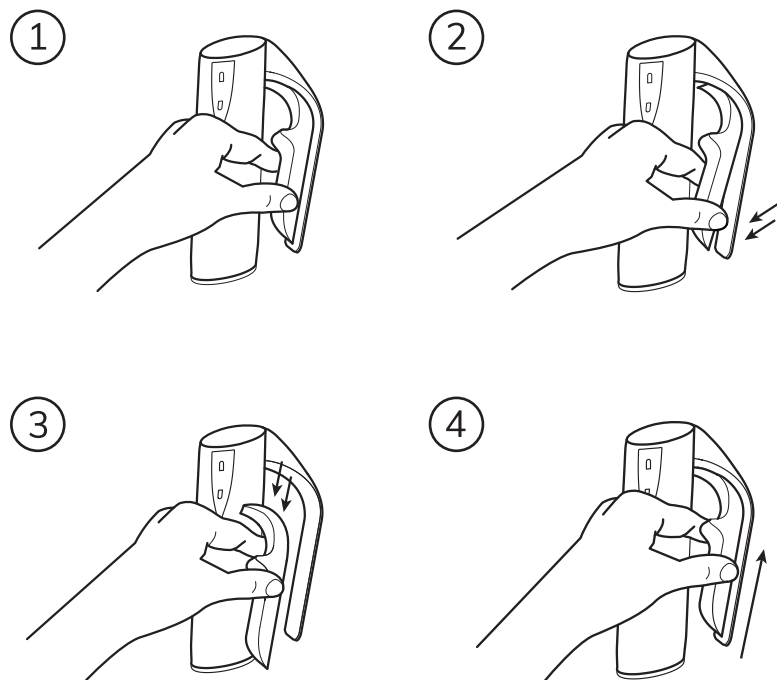


2 Overview

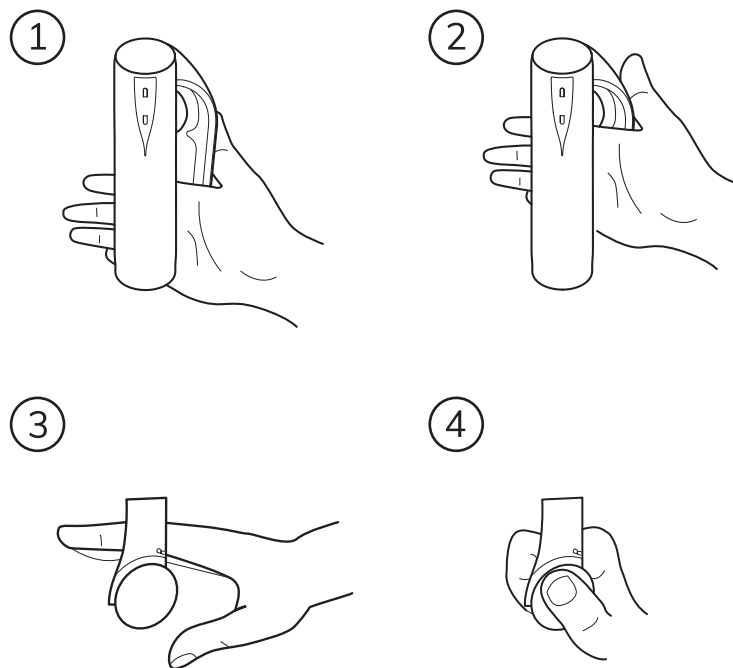


1. Thumbpad
2. LED slider (Configurable as analog input or two independent buttons)
3. Replaceable foam (S, M & L)
4. Full finger tracking
5. On/Off press button
6. USB-C charging port

3 How to change the handle foams?



4 How to wear eteeController?



5 eteeController LED status

1. **Blink Blue:** Device is not connected.
2. **Breathing Pink:** Device is connected and active.
3. **Breathing Red:** Device is low on battery.
4. **Blink Red:** Device is critically low on battery.
5. **Breathing Yellow:** Device is active and charging.
6. **Solid Yellow:** Device is powered-off and charging.
7. **No LED:** If a charging cable is not connected, device is powered-off. If a charging cable is connected, device is fully charged.

6 Download eteeConnect & turn on eteeController

1. **Go to the eteeConnect page.** Please visit the link below.
<https://store.steampowered.com/app/1590110/eteeConnect/>
2. **Download eteeConnect** to install eteeController drivers, visualise device data, configure the device, and keep them updated.
3. **Insert eteeDongle into usb port.**
4. **Press the power button for 4s.**

7 Open eteeConnect

1. Run the **eteeConnect installer** and open the application.
2. Go to the **Live Data** page to check the signal from eteeController.

8 Calibration

1. **Correct hand position** during calibration.
2. Go to **> Option > calibration**. Follow the on-screen guide.
3. **Note:** Or you can do the quick calibration by double clicking the power button of eteeController.

9 Playing PC games through eteeConnect

1. Use the **preset profile for controller mapping** or configure your own binding.
2. Run **any PC game** compatible with Xbox controls.

10 Configure eteeController for your own projects

1. Low level API for Unity/Python/C++ are available in our page <https://eteexr.com>
2. Follow example code provided and continue on to our **"In-depth guide"** for example use-cases.

11 Further information



Supplier's Declaration of Conformity

Unique Identifier
Trade Name:TG0
Product Name: eteeController
Product Number: 6001-02-00-01
eteeDongle P/N: 6504-01-00-01
etee Controller P/N: 4001-00-00-00

Responsible Party-U.S. Contact information:
US Company name: UGK-LVM UNITED INC
Address: 6547 N Academy Blvd #2266, Colorado Springs, CO 80918:
Contact: Jimmy Chen
Tel: 001-323-5104660

CAUTION
Risk of explosion if the battery is replaced by an incorrect type disposal of a battery into fire or a hot oven, or mechanically crushing or cutting of a battery, that can result in an explosion; leaving a battery in an extremely high temperature surrounding environment that can result in an explosion or the leakage of flammable liquid or gas; a battery subjected to extremely low air pressure that may result in an explosion or the leakage of flammable liquid or gas.

This device complies with Part 15 of the FCC Rules. Operation is subject to the following two conditions: (1) this device may not cause harmful interference, and (2) this device must accept any interference received, including interference that may cause undesired operation.

FCC Compliance Statements
This device complies with Part 15 of the FCC Rules. Operation is subject to the following two conditions: (1) this device may not cause harmful interference, and (2) this device must accept any interference received, including interference that may cause undesired operation.
Note: This equipment has been tested and found to comply with the limits for a Class B digital device, pursuant to Part 15 of the FCC Rules. These limits are designed to provide reasonable protection against harmful interference in a residential installation. This equipment generates, uses and can radiate radio frequency energy and, if not installed and used in accordance with the instructions, may cause harmful interference to radio communications. However, there is no guarantee that interference will not occur in a particular installation. If this equipment does cause harmful interference to radio or television reception, which can be determined by turning the equipment off and on, the user is encouraged to try to correct the interference by one or more of the following measures:
-- Reorient or relocate the receiving antenna.
-- Increase the separation between the equipment and receiver.
-- Connect the equipment into an outlet on a circuit different from that to which the receiver is connected.
-- Consult the dealer or an experienced radio/TV technician for help.
Caution: Changes or modifications not expressly approved by the party responsible for compliance could void the user's authority to operate the equipment.



QUICK START GUIDE

eteeController

eteeController P/N: 6001-02-00-01

©2023 TANGIO LTD All Rights Reserved. Powered by TG0 Technology.