

Button name, indicator LED light and function

Power Indicator:

Light is on means connected properly.

Error Indicator:

When out of paper, cutter or printing head overheat occurred, the ALARM indicator twinkles.

Paper Indicator(LED Light):

Blue and red lights are on means lack of paper, no alarm means all goes well.

Feed Button

Press to feed paper manually.



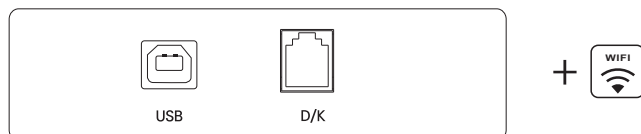
Tips: Product design and specifications are subject to change without prior notice.

Remove the used roll paper core if any, and insert the roll paper. The correct direction of the paper is shown in the illustration below.

CONNECT PRINTER

CONNECT PRINTER

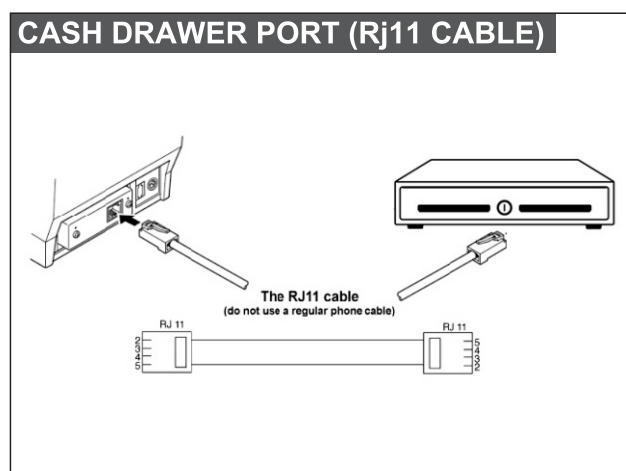
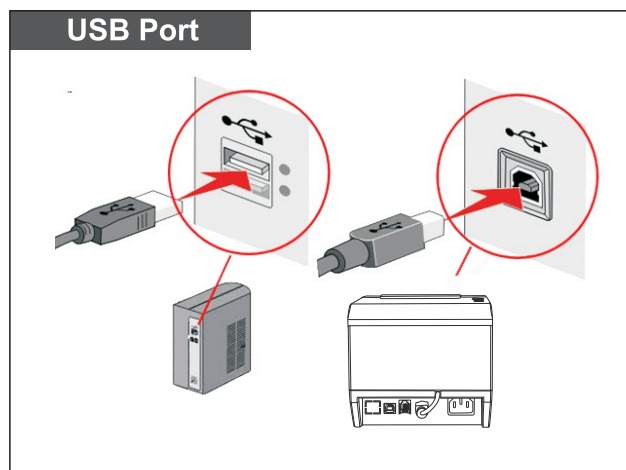
STEP 2 - INSTALL DRIVER



TIPS

Self Test

Printer connected power and keep off status, then press the "FEED" button and turn on the power, after hear the beeper sounds, release "FEED button", a completed self test paper will be printed and show printer settings.



Selftest

Firmware Version:

Print Speed:260mm/s

Command mode:EPSON(ESC/POS)

Firmware modify:2021/07/28

Cutter enable:Yes

Beeper enable:Yes

Black mark mode:No

Density Level:5(Max=8)

Char line FontA/B:48/64

Default ASCII Font:FONTA

Default code page:Page0

Chinese character:No

USB&WIFI Interface

USB port fixed:Yes

USB Port mode:USB Printing

MAC address 00-CA-D6-CD-33-25

IP address:192.168.1.100

Subnet Mask:255.255.255.0

Gate Way:192.168.1.1

Code page: page 0  
0 stands for  
PC437(Std. Europe)

Selftest

Code Page:

0:PC437(Std. Europe)1:(Katakana)  
2:PC850(Multilingual)3:PC860(Portugal)  
4:PC863(Canadian)5:PC865(Nordic)  
6:(West Europe)7:(Greek)  
8:(Hebrew)9:(East Europe)  
10:(Iran)11:(WPC1252)  
12:PC866(Cyrillic#2)13:PC852(Latin2)  
14:(PC858)15:(IranII)  
16:(Latvian)17:(Arabic)  
18:(PT1511251)19:(PC747)  
20:(WPC1257)21:(Thai)  
22:(Vietnam)23:(PC864)  
24:(PC1001)25:(Uigur)  
26:(Hebrew)27:WPC1255(Israel)  
28:PC437(Std. Europe)29:(Katakana)  
30:PC437(Std. Europe)31:PC858(Mult)  
32:PC 852(Latin-2)33:PC860(Portugu)  
34:PC861(Icelandic)35:PC863(Canadian)  
36:PC865(Nordic)37:PC866(Russian)  
38:PC855(Bulgarian)39:PC857(Turkey)  
40:PC862(Hebrew)41:PC864(Arabic)  
42:PC737(Greek)43:PC851(Greek)  
44:PC869(Greek)45:PC928(Greek)  
46:PC772(Lithuanian)47:PC774(Lithuan)  
48:PC874(Thai)49:WPC1252(Latin1)  
50:WPC1250(Latin-2)51:WPC1251(Cyril)  
52:PC3840(IBM-Russian) 53:PC3841(Gost)  
54:PC3843(Polish)55:PC3844(CS2)  
56:PC3845(Hungarian)57:PC3846(Turkish)  
58:PC3847(Brazil-ABNT) 59:PC3848(Brazil)  
60:PC1001(Arabic)61:PC2001(Lithuan)  
62:PC3001(Estonian-1)63:PC3002(Eston-2)  
64:PC3011(Latvian-1)65:PC3012(Latv-2)  
66:PC3021(Bulgarian)67:PC3041(Maltese)  
68:PC852(Croatia)69:VISCII  
70:WPC1256(Arabic)

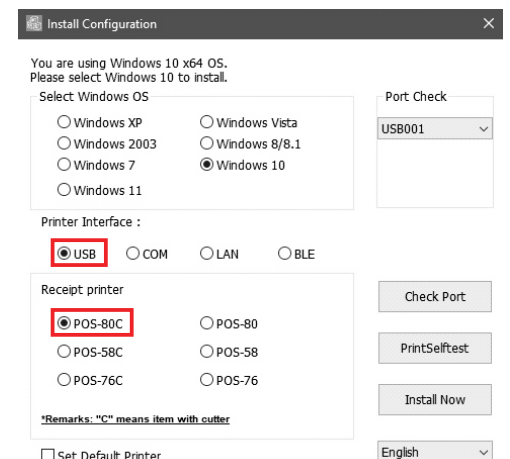
Code Page

USB port driver installation

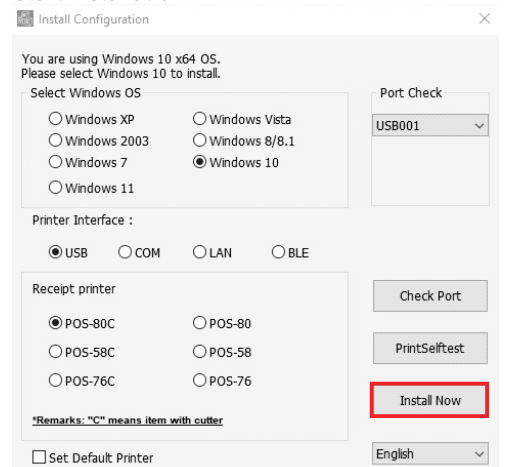


1. Double-click "POS Printer Driver V8.11"
2. USB driver installation or Serial port driver installation

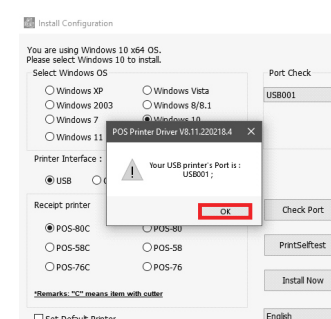
1) Select USB port and printer type;



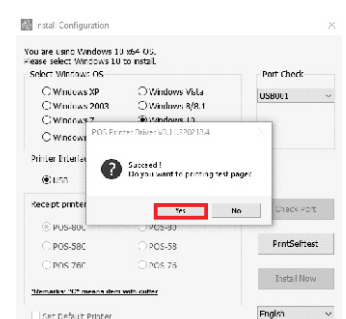
2) Click Start Installation.



3) Select OK.



4) Select YES to print the test page and check the printer driver name;



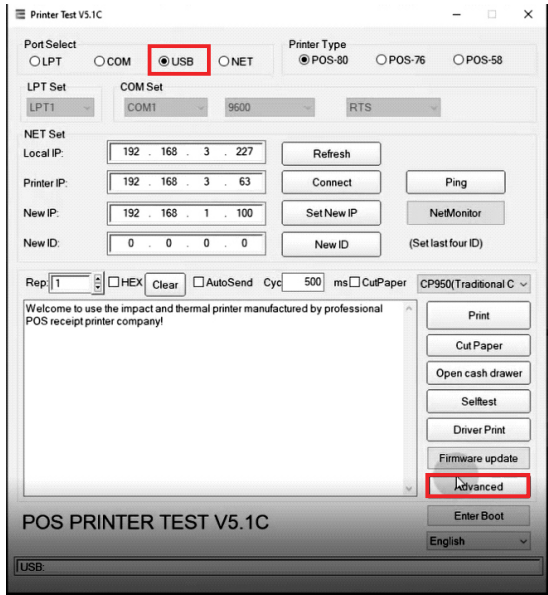
5) Installation is complete.

WIFI driver installation

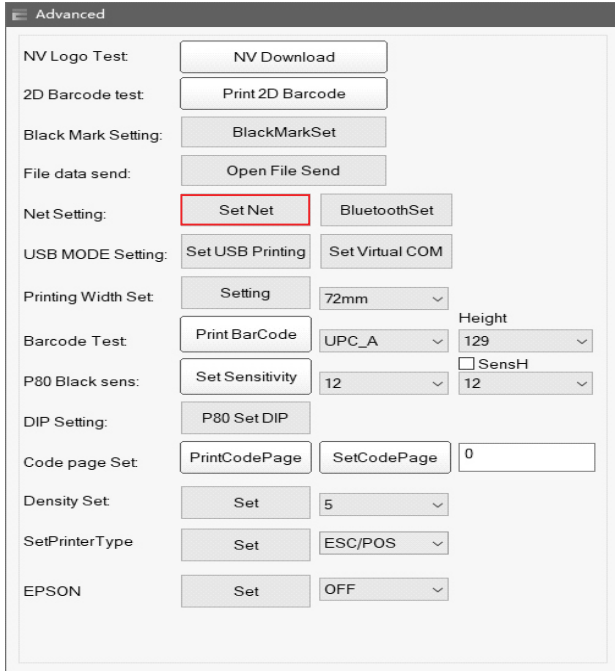


- 1. Double-click "Printer Test V5.1C"
- 2.WIFI driver installation

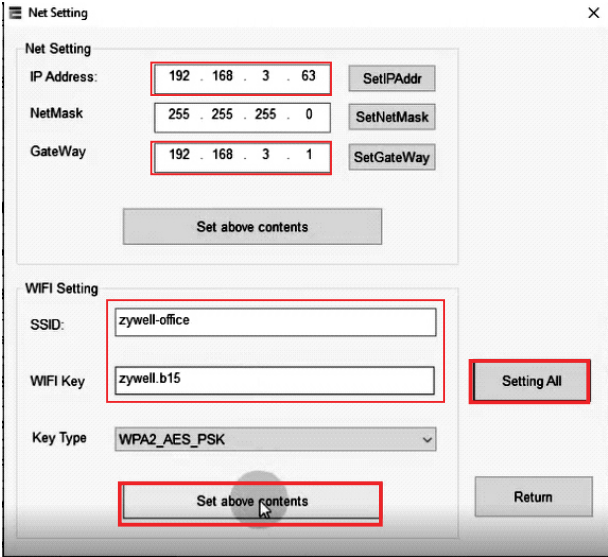
1) Insert USB cable, select USB connection, and select "advanced"



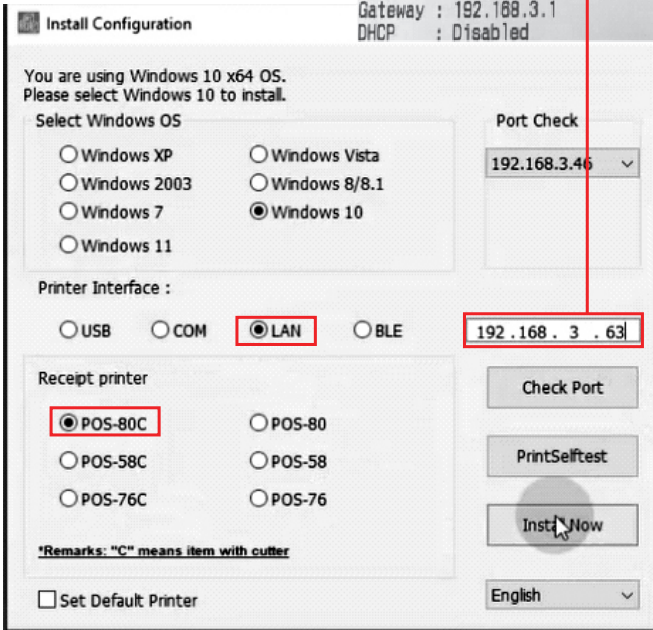
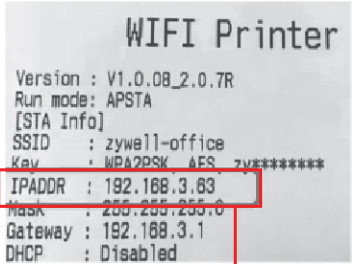
2) Select network settings.



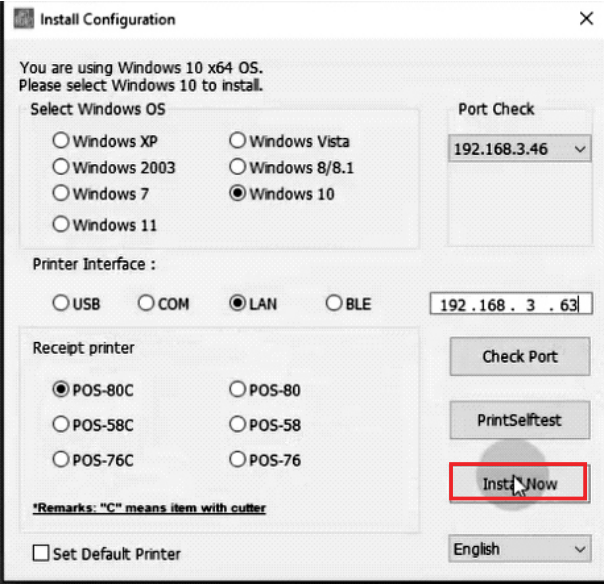
3) Set the IP of the printer WiFi (note that the IP needs to be set in the same gateway as the home network), and the printer is connected to the home network;



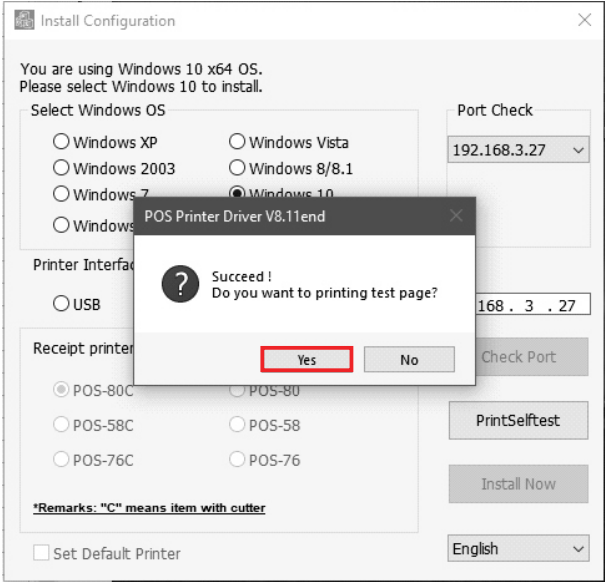
4) Use "POS Printer Driver V8.11" to install the driver, select the network port, printer type and IP port number;



5) Click Start Installation.



6) Select YES to print the test page and check the printer driver name;



7) Installation is complete.

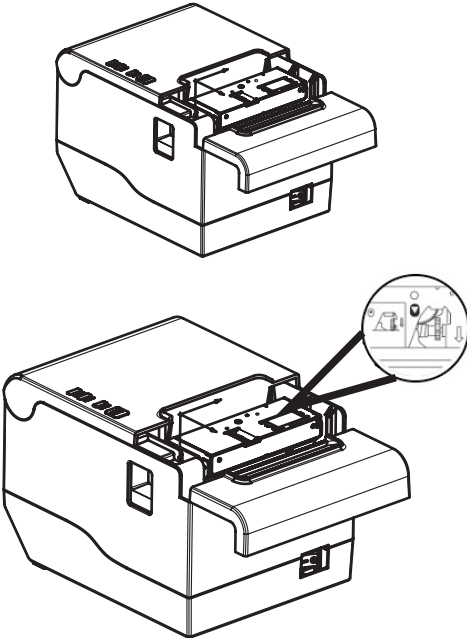
TROUBLESHOOTING

Problems	Possible Reasons	Solution and Suggestion
Print random code	Character mismatch in font library, text printing garbled.	Non-Chinese printing 1. Confirm whether the Chinese mode is turned on, if so, please use the tool to turn off the Chinese mode.  Operating instructions: 1. use "PrinterTestV5.1C" to set up and connect the printer;2. Enter the advanced mode-P 80 set dip-chinses mode-no-setting  2. When the Chinese mode is turned off, please select and set the correct language code page.  Guidelines for page printing: print the self-check page-once the self-check page is printed, press the "FEED" key to print the code page;Setup guidelines: 1. use "PrinterTestV5.1C" to set up and connect the printer; 2. Enter the advanced mode-set the default code page-enter the serial number of the code page characters (please see the code page)-click set code page.
	Serial baud rate mismatch	Keep the baud rate of the device consistent with that of the printer: 1. print the self-check page to confirm the baud rate of the printer. please check "serial config". 2. Change the baud rate of computer serial port: control panel-view devices and printers-right-click printers-printer properties-ports-configure ports-modify baud rate-apply-OK;
Print font blur	1. Low printing density 2. Poor quality of paper roll 3. The life of the print head is near	1. modify the printing density: use "PrinterTestV5.1C" to set, connect the printer-advanced -Density set- enter the density value (the higher the value, the higher the density value)-click set;Step 2 Replace the paper roll 3. Replace the print head
The printer doesn't work properly.	Printer setup error	Restore factory settings: Instructions: Turn off the power of the printer press the "FEED" key-turn on the power at the same time-whenThe ERROR LED and the PAPER LED flash twice at the same time, release the "FEED" key, and the factory is successfully restored with a click;
ERROR LED and PAPER LED are always on, and buzzer sounds.	1. The upper cover of the printer is not covered properly; 2. Running out of printing paper;	1. Check whether the upper cover is covered properly; 2. Replace the printing paper;
Incomplete printing	Paper setting is incorrect.	Check the paper setting size

CUTTER STUCK MAINTENANCE

Cutter stuck maintenance

- Method (1)  
Turn off the power and then restart.
- Method (2)  
Turn the gear on printing head, cutter can be returned to its original position.



Notice: To avoid the damage of the printing head and automatic paper cutter, please do not open cutter and mechanism violently.

CLEARANCE AND MAINTENANCE

Clearance

One of the following occurred, please clean printing head.  
(1) Printing is not clear.  
(2) Any vertical is not clear.  
(3) Paper feed noisily.

Printing head cleaning steps:

Parts to be cleaned	Step	Recommend cleaning frequency
Print head	1.Turn off the printer. 2.Allow the print head to cool for at least one minute. 3.Use a cotton swap and 100% ethanol to clean the print head surface.	When change new label paper
Rubber roller	1.Turn off the printer. 2.Rotate the platen roller and use a cotton swap to clean with 100% ethanol.	When Change new label paper
Paper tear bar	Use a cotton swap and 100% ethanol to clean.	When necessary.
Sensor	Use air brush or vacuum to clean dust of sensor.	Monthly.
Inner side of printer	Use air brush or vacuum to clean the dust.	When necessary.

Notice  
1)Please make sure power off when maintaining printer.  
2)Don't touch or scratch printing head surface,roller and sensor.  
3)Avoid gas,acetone or other organic solvent.  
4)Wait till alcohol completely volatilized,close top cover and connect power again.Try print self test to make sure it works properly.

Warning  
No part of this manual can be changed without agreement.The company reverses the right to modify the technologic,components,software and hardware. You may ask the distributors for more product information.No part of chapter in this manual can be copied or transmitted in any format without permission.

This device complies with part 15 of the FCC Rules. Operation is subject to the following two conditions: (1) This device may not cause harmful interference, and (2) this device must accept any interference received, including interference that may cause undesired operation.

Any Changes or modifications not expressly approved by the party responsible for compliance could void the user's authority to operate the equipment.

**Note:** This equipment has been tested and found to comply with the limits for a Class B digital device, pursuant to part 15 of the FCC Rules. These limits are designed to provide reasonable protection against harmful interference in a residential installation. This equipment generates uses and can radiate radio frequency energy and, if not installed and used in accordance with the instructions, may cause harmful interference to radio communications. However, there is no guarantee that interference will not occur in a particular installation. If this equipment does cause harmful interference to radio or television reception, which can be determined by turning the equipment off and on, the user is encouraged to try to correct the interference by one or more of the following measures:

- Reorient or relocate the receiving antenna.
- Increase the separation between the equipment and receiver.
- Connect the equipment into an outlet on a circuit different from that to which the receiver is connected.
- Consult the dealer or an experienced radio/TV technician for help.

This equipment complies with FCC radiation exposure limits set forth for an uncontrolled environment. This equipment should be installed and operated with minimum distance 20cm between the radiator & your body.