

## Using G-Grip

### Turning on

- Press and hold for 3 sec.

### Pairing G-Grip

- Activate Bluetooth® on your device.
- Turn on device by pressing the shutter button until the status light is flashing green.
- Add Bluetooth® device in phone settings.
- Select 'GGrip' from the list of available devices.

### Shooting photos

- Select Photo mode on your device.
- Press shutter once for single picture.
- For Burst mode, press and hold (for up to 3 minutes).

Note: To configure Burst mode on iPhone, go to Settings > Camera and enable the option to 'Use Volume Up for Burst'.

### Shooting videos

- Select Video mode on your device.
- Press shutter once to record, and again to stop.

### Turning off

- The device will go into automatic standby mode after 6 minutes of inactivity.

### Charging G-Grip

- The status LED will show red when the battery is low, charge your G-Grip using a USB-C charger (charger and cable not supplied) until the red light has turned off.

### Troubleshooting – lost connection

- If the status LED on the G-Grip flashes green, this means it has been disconnected from your device.
- Ensure Bluetooth® is turned on in settings on your device.
- Turn on device by pressing the shutter button until the status light is flashing green.
- Add Bluetooth® device in phone settings.
- Select 'GGrip' from the list of available devices.

## Specifications

- Transition frequency 2.4000GHz - 2.4835GHz.
- Communication distance 10m (30ft).
- Battery life 20 hours in use and 4,000 hours on standby.

### Compatible devices

- iPhone with iOS 6 and above.
- Android OS 4.2 and above.
- Compatible devices require Bluetooth® 4.0+ support and use of side volume key as the shutter button.

### Legal

G-Grip does not accept any liability for loss or damage to devices or objects as a result of the G-Grip being incorrectly attached to a device.

The Bluetooth® word mark and logos are registered trademarks owned by Bluetooth SIG, Inc. Other trademarks and trade names are those of their respective owners.

### Regulatory Conformance

Radio equipment conformity statement (see opposite).

## Caution

The user is cautioned that changes or modifications not expressly approved by the party responsible for compliance could void the user's authority to operate the equipment. This device complies with Part 15 of the FCC Rules. Operation is subject to the following two conditions: (1) this device may not cause harmful interference, and (2) this device must accept any interference received, including interference that may cause undesired operation. NOTE: This equipment has been tested and found to comply with the limits for a Class B digital device, pursuant to Part 15 of the FCC Rules. These limits are designed to provide reasonable protection against harmful interference in a residential installation. This equipment generates, uses and can radiate radio frequency energy and, if not installed and used in accordance with the instructions, may cause harmful interference to radio communications. However, there is no guarantee that interference will not occur in a particular installation. If this equipment does cause harmful interference to radio or television reception, which can be determined by turning the equipment off and on, the user is encouraged to try to correct the interference by one or more of the following measures:

1. Reorientate or relocate the receiving antenna.
2. Increase the separation between the equipment and receiver.
3. Connect the equipment into an outlet on a circuit different from that to which the receiver is connected.
4. Consult the dealer or an experienced radio/TV technician for help.

### FCC Radiation Exposure Statement

This equipment complies with FCC radiation exposure limits set forth for an uncontrolled environment. This transmitter must not be co-located or operating in conjunction with any other antenna or transmitter.

### Recycling

Please recycle all materials used in packaging.

Designed and developed in the UK. Made in China. Patent pending.

The product is a portable device and meets the exposure assessment requirements for portable devices.



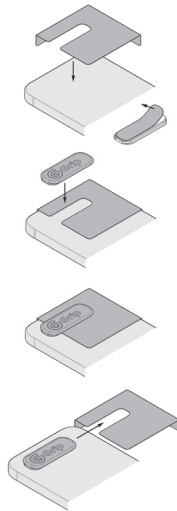
Hold your phone like a camera  
Bluetooth® SHUTTER AND GRIP

## Attaching G-Grip to your device

G-Grip can be attached in any orientation or position on your device; though landscape or portrait shooting is recommended depending on your preference. Whilst a position guide for landscape orientation is included, the G-Grip can be placed wherever you feel it is comfortable. You can even try having two different positions using both included plates (so long as you leave enough space for it to slide on/off).

**Important:** We suggest testing the position of your G-Grip before removing the adhesive backing as the tape cannot be repositioned.

**Important:** The strong 3M VHB adhesive is single use and will adhere to smooth, non-textured, non-porous, flat surfaces. It will not adhere to rubber, matte glass, silicone, TPU or soft touch coatings.



## Attaching the self-adhesive plate with the guide

## Attaching G-Grip to your device

### Using the positioning guide

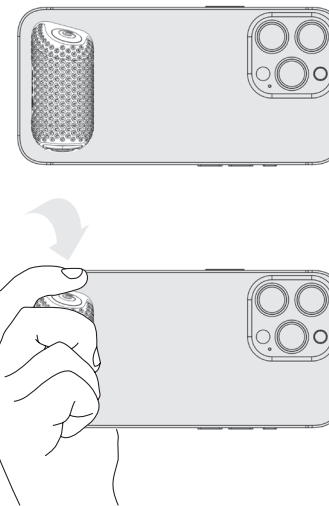
- Ensure your device is clean, free of grease and dust.
- Position the guide on your device.
- Remove the backing on the self-adhesive.
- Place the plate into the slot pressing firmly onto the device.
- Slide the positioning guide out from under the plate.
- Allow the adhesive plate a minimum of 24hrs to harden before attaching the G-Grip.

### Choosing your own position

- Put the plate into the G-Grip.
- Align the G-Grip to where you feel comfortable, making note of the position.
- Remove the backing on the self-adhesive.
- Place the G-Grip back into the same position, aligning it with the nearest edge.
- Press and hold the G-Grip and leave the adhesive plate to harden for 24hrs.
- You can carefully remove the G-Grip during this period (do not use the G-Grip for 24hrs).

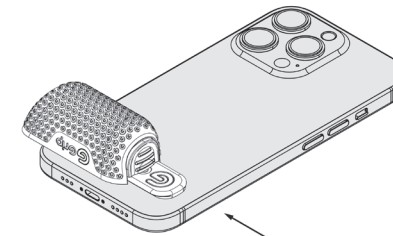
### Removing the plate

- Prise the plate carefully away from the device using a plastic non-scratch implement.
- The tape will stretch and peel away.



## Attaching/removing G-Grip

- Slide the catch up and over the plate until it closes in the locked position.
- To remove, slide the catch up and the G-Grip off.



'I shoot pictures on my phone everyday. I invented the G-Grip so I can operate it like a traditional camera'.

Greg Williams

For more information visit  
[www.ggrip.com](http://www.ggrip.com)