

LED down light



Product name	LED down light
Model No.	DE1204WE1WH-09
Rated Voltage	120VAC
W / LM / CRI	9W 700LM ≥80
CCT Range	RGB + 2700K - 6500K

Product name	LED down light
Model No.	DE1206WE1WH-14
Rated Voltage	120VAC
W / LM / CRI	14W 1000LM ≥80
CCT Range	RGB + 2700K - 6500K

⚠️ WARNINGS AND CAUTIONS

- Risk of fire and electrical shock, products should be installed in accordance with appropriate electrical codes and regulations.
- The product shall be used together with an upstream air-gap switch.
- If you are unsure about any part of these instructions, consult a licensed electrician.
- **DO NOT USE WITH AN IN-WALL DIMMER.** Only Dimmable via the mobile APP.

This device complies with Part 15 of the FCC Rules. Operation is subject to the following two conditions:

(1) This device may not cause harmful interference, and (2) This device must accept any interference received, including interference that may cause undesired operation.

This equipment has been tested and found to comply with the limits for a Class B digital device, pursuant to part 15 of the FCC Rules. These limits are designed to provide reasonable protection against harmful interference in a residential installation. This equipment generates, uses and can radiate radio frequency energy and, if not installed and used in accordance with the instructions, may cause harmful interference to radio communications. However, there is no guarantee that interference will not occur in a particular installation. If this equipment does cause harmful interference to radio or television reception, which can be determined by turning the equipment off and on, the user is encouraged to try to correct the interference by one or more of the following measures:

- Reorient or relocate the receiving antenna.
- Increase the separation between the equipment and receiver.
- Connect the equipment into an outlet on a circuit different from that to which the receiver is connected.
- Consult the dealer or an experienced radio/TV technician for help.

FCC CAUTION

Any changes or modifications to this unit not expressly approved by the manufacture could void the user's authority to operate the equipment.

Mobile APP Set-up

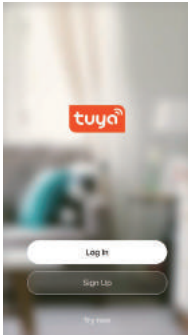
Step 1 Download the 'TuyaSmart' App

- Scan the QR code below to download the 'TuyaSmart' App.
- You can also download this app in the App Store/Android App Market, search "TuyaSmart"



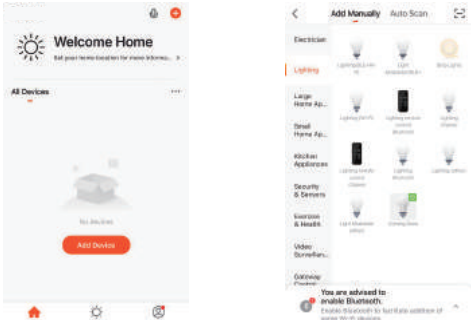
Step 2 Register an account and Login

- Open the TuyaSmart App,click Register to create an account & login.
- If already registered, login.



Step 3 Selecting the Device

- Click 'Add Device' or the '+' in the top right-hand corner;
- Click 'lighting' then 'Light Source (Wi-Fi)' to enter the device connection interface.

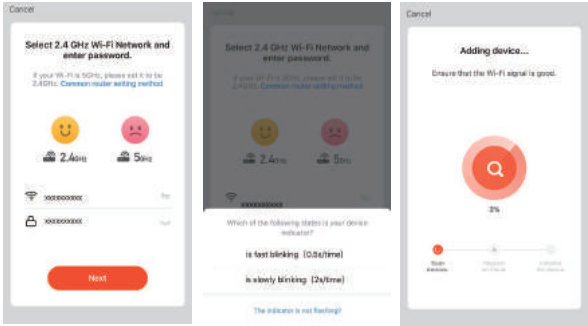


Step 4 Mobile phone connection

Step 4a EZ mode connection:

When the Smart downlight is on, switch the on/off switch 3 times (each interval within 1s), Off, On, Off, On, Off, On. The light will flash quickly (flash once every second), your device can connect to the light. The light will stop flashing once when the connection is successful. If there is no connection, device will exit network configuration mode after 3 min.

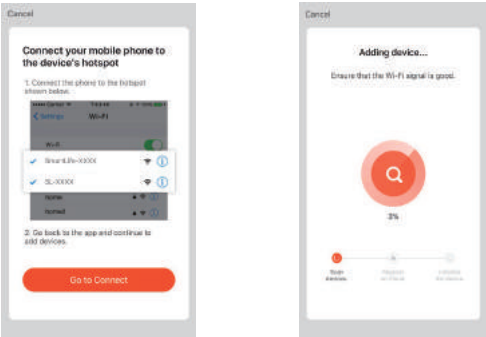
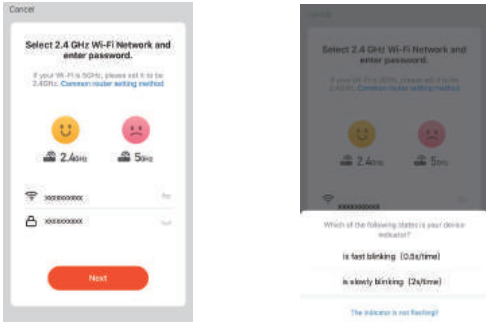
- Enter the Network Name & WiFi password for your home, click Next.
- Confirm the light is flashing,click device indicator is 'fast blinking (0.5S/time)'.
- Device will Connect.



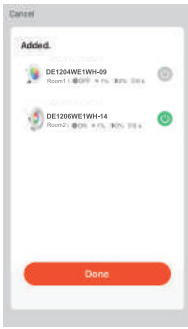
Step 4b AP mode connection:

When the Smart downlight is flashing quickly; turn the light off. Repeat turn the on/off switch 3 times to make the light flash slowly. The light will flash slowly (flash once every 2-3s), your phone can connect to the light. The light will stop flashing once when the connection is successful. If there is no connection, the device will exit network configuration mode after 3 min.

- Enter the WiFi Network and password for your home, click 'Next'.
- Click 'EZ Mode' in the upper corner to switch the interface to 'AP Mode'.
- Confirm the light is blinking slowly, flashes slowly, click 'Next'
- Back out of the APP, go to WiFi Networks in Settings, connect to the device WiFi - 'SmartLife-XXXX'.
- Return to the TuyaSmart App, wait for the connection to complete.

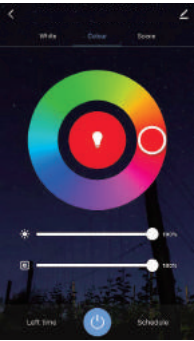
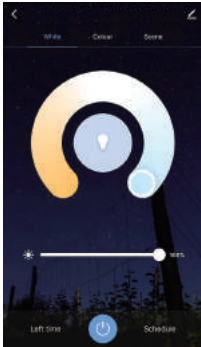


- Click 'Done' to enter the operation interface.



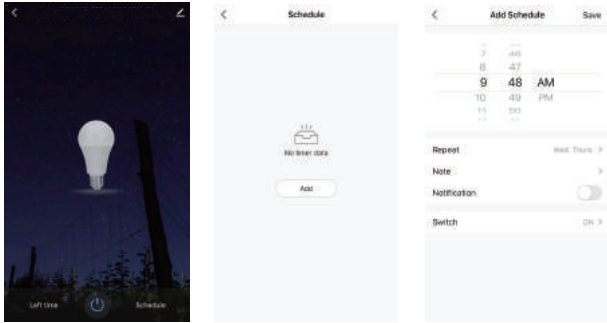
Mobile APP operation

- Select White to adjust the CCT and to Dim.
- Select Color to adjust to the desired color, to Dim and adjust Contrast.

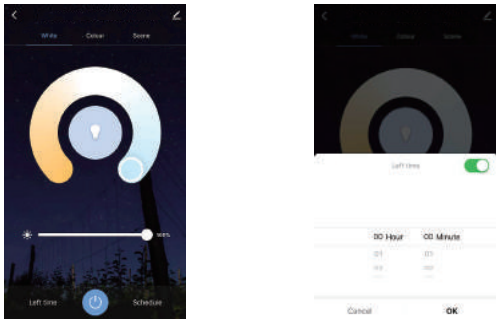


- Click Schedule to set a on or off function of the light at a certain time/day(s).

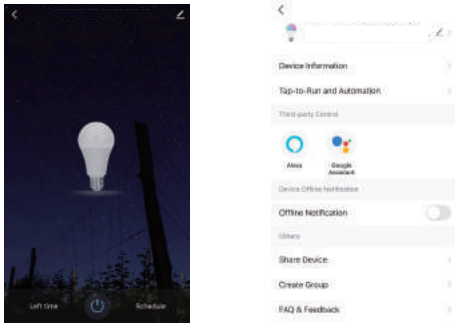
- Add schedule and then save. Repeat as desired.



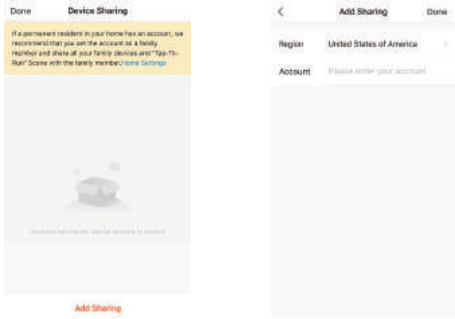
- Select Left Time to enable Countdown Timer when light is on. The time selected will automatically turn the light off after the desired time.



- After the light connection is completed, it can be shared to many people, that is, one light can be controlled by multiple Users.
- Click 'Add Sharing' to enter the device details interface;
- Click 'Share Device' to enter the device sharing interface.



- Click 'Add Sharing', add the account you are willing to sharing.



- You may also share all devices in your account with another account.
- Go to "Me" at the bottom of the App.
- Select "Home Management".
- Select the Home you wish to share.
- Select "Add Member". You can send invite via TUYA account, Message or Email. New Member must have or create a TUYA Account via the TUYA Smart App.

Support Amazon Alexa and Google Home Set-up

For Amazon Alexa

- Open Alexa App and select "Skills" from the top menu.
- On the Skills Page, search for TUYA Smart.
- Enable TUYA Smart in the Alexa App.
- Log in with your TUYA Smart account (username & password)
- Discover new smart devices in the App or ask Alexa to Discover new devices.

For Google Home

- Open Google Home App, tap "+" icon in the homepage.
- Select "Set up device" in the "Add and manage" screen.
- In the "Set Up" screen, tap "New Devices" to set up new devices in your home.
- Tap "Works with Google" to authorize Google Home to work with your TUYA Smart account.

Amazon Alexa and Google Home voice control examples

For Amazon Alexa

- Alexa,turn on <device name>
- Alexa,turn off <device name>
- Alexa,set <device name> to percent
- Alexa,brighten/increase <device name>
- Alexa,dim/decrease <device name>

For Google Home

- Hey Google,turn on <device name>
- Hey Google,turn off <device name>
- Hey Google,is <device name> on/off?
- Hey Google,brighten/increase <device name>
- Hey Google,Dim/Brighten <device name> by 50%

Trouble-Shooting / Recommendations / Tips

- If the light is offline in the App, make sure the in-wall switch is in the On position. If not, turn on.
- Please check whether the light is connected with power, and your mobile device is connected to a 2.4GHz WiFi Network.
- Check the router. If the router is dual-band, make sure to select 2.4GHz network to add the light. Router Broadcast should be set to open.

- Make sure the WiFi User Name and Password are correct.
- Make sure the light is within the range of the router signal. If not, try moving closer to the router. Check Wi-fi signal on the mobile device to make sure the signal is strong in that area or if it is weak.
- Check to see if the maximum number of devices/lights the router can handle has been reached. If so, remove a device/light and restart the router. If there is no Wi-Fi connection, try restarting the light and/or restarting the router.
- If the device will not go into pairing mode, try the on/off sequence 4 or 5 times instead of 3 times. Also give a second or 2 longer delay between the on/off sequence.
- If the internet signal/connection from the internet provider is down, the light can still be controlled through the mobile device as long as both are connected to the same Network (Intranet).

This device complies with part 15 of the FCC Rules. Operation is subject to the following two conditions: (1) This device may not cause harmful interference, and (2) this device must accept any interference received, including interference that may cause undesired operation.

FCC warning:

Any Changes or modifications not expressly approved by the party responsible for compliance could void the user's authority to operate the equipment.

Note: This equipment has been tested and found to comply with the limits for a Class B digital device, pursuant to part 15 of the FCC Rules. These limits are designed to provide reasonable protection against harmful interference in a residential installation. This equipment generates uses and can radiate radio frequency energy and, if not installed and used in accordance with the instructions, may cause harmful interference to radio communications. However, there is no guarantee that interference will not occur in a particular installation. If this equipment does cause harmful interference to radio or television reception, which can be determined by turning the equipment off and on, the user is encouraged to try to correct the interference by one or more of the following measures:
-Reorient or relocate the receiving antenna.
-Increase the separation between the equipment and receiver.
-Connect the equipment into an outlet on a circuit different from that to which the receiver is connected.
-Consult the dealer or an experienced radio/TV technician for help.

This equipment complies with FCC radiation exposure limits set forth for an uncontrolled environment. This equipment should be installed and operated with minimum distance 20cm between the radiator & your body.



Made In China