

User Guide

用户使用说明书

Aristos Home Doorbell Push Button

爱里斯盾门铃按键

Introduction

Aristos Home Doorbell is a multi-functional doorbell. Self-powered doorbell, press to generate electricity, no battery replacement, adhesive installation, save wiring troubles. Emergency button, waterproof and dustproof, placed in washroom or bathroom, compact and portable, friendly to elderly and pregnant women. Multi-use, simple pairing, power failure memory, smart home easy to start.

Warm tip: The push button needs to be paired with the doorbell receiver to use, if you want to experience the product function, please make sure to purchase the receiver at the same time.



Doorbell Receiver



Doorbell Push Button

Push button pairing and unpairing

● Doorbell

a. Plug the receiver into an electrical outlet



b. Long press the music button (receiver) for 3s, until the light begins to flash



c. Short press music button to choose music

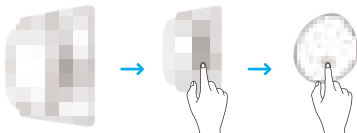


d. Press the push button to completed



● Emergency button

Long press the volume button (receiver) for 3s, until the light begins to flash, marking the receiver has entered the waiting for pairing, and then release the button. Press the push button which you want to pair with. At this time, the receiver continues to sound the alarm sound, the emergency button paired, and then press the push button again to stop.



● Unpairing

Press and hold the volume button (receiver) for 10s until the indicator light flashes, which will clear all paired push buttons.

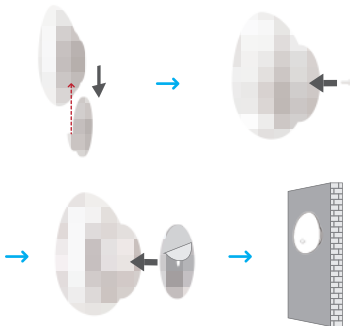


Warm tip: Doorbell's effective communication distance is 100m, which may be affected by obstacles such as walls, etc.

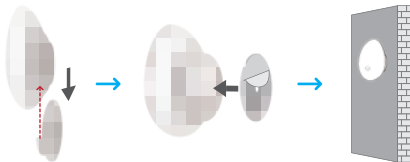
Installation

● Fixed

1. Outdoor: put the push button into the mounting clips, use the screws to lock the mounting clips with the button to prevent removal.



2. Indoor: put the push button into the mounting clips, use the adhesive to fix the mounting clips on the wall, the push button can be removed.

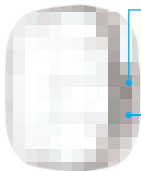


● Carry-on

Use the lanyard, easy for elderly and pregnant women to carry with them in case of emergency situation.



Daily Use



Doorbell Receiver

Volume button

Short press: adjust volume

Long press for 3s: enter emergency button pairing mode

Long press for 10s: clear pairing relationship

Music button

Short press: change music during pairing mode

Long press for 3s: enter doorbell pairing mode

Press to transmit the signal,
the receiver music plays



Doorbell Push Button

Device Specifications

Product Name	Aristos Home Doorbell Push Button
Product Model	ASMR003
Material	ABS
Net Weight	1.27 oz
Music	38 songs
Wireless Connectivity	433.92MHz
Power Supply	Self-powered (No Battery Required)
Working Temperature	-4°F~113°F
Working Humidity	0~93% RH, No condensation
FCC ID: 2A9CN-SMR1	
One receiver can be paired with up to 10 push button One push button can be paired with an unlimited number of receivers	

Product Warranty Information

Warranty Policy:

From the date of purchase, the user can enjoy warranty services for all quality-related defects on items sold directly by Aristos Home or Aristos Home's authorized distributors. The warranty period is one (1) year starting from the date of receiving it except product appearance.

Warranty claims for quality-related issues:

Aristos Home's limited warranty is only restricted to the country/region of purchase. The limited warranty is void on items taken outside of the country they were originally bought in or shipped to directly from an authorized online purchase.

Quality-related warranty claims on purchases made through Aristos Home's authorized distributors and retailers are handled through Aristos Home.

For quality-related warranty claims, items will be replaced with an appropriate replacement part or a factory refurbished model of equivalent value (when available); otherwise, a new item will be sent.

Warranties on all replacements follow the same warranty time frame of the original defective item or 3 months after replacement (whichever is the longer). Product warranty becomes invalid after the full refund.

Process:

- The buyer must provide sufficient proof of purchase.
- Aristos Home must document what happens when the buyer troubleshoots the product.
- The serial number of the defective item and/or visible proof describing the defect are required.
- It may be necessary to return an item for quality inspection.

Valid proof of purchase:

- Order number from online purchase through Aristos Home or an Aristos Home's authorized distributor.
- Sales invoice
- Dated sales receipt from an Aristos Home's authorized distributor, showing product description and its price.

Please note that more than one type of proof of purchase may be required to process a warranty claim (such as receipt of remittance and confirmation of address the item was originally shipped to).

The warranty claim for product defects expires 90 days after issuing a warranty claim. It is not possible to process a warranty claim for items that have expired their original warranty time frame, or 90-day warranty claim request period (whichever is longer).

Shipping costs must be covered by the buyer in the following situations:

- Return for any reason other than a proven defect
- Warranty claims on items taken outside the original country/region of purchase
- Buyer's accidental returns
- Returning personal items
- Returning items claimed to have defects but found by Aristos Home Quality Control Department to be in working condition
- Returning defective items to international shipping
- Costs associated with unauthorized returns (any returns made outside of the approved warranty process)

Situations not covered under warranty:

- Products without sufficient proof of purchase
- Lost or stolen products
- Items that have expired their warranty period
- Non quality-related issues (after 30 days of purchase)
- Free products
- Repair, disassembly, and the likes not authorized by Aristos Home
- Damage from outside sources (such as volcano, earthquake, debris)

flow, flood, etc.)

- Appearance changes such as aging, paint loss, and fading in normal use
- Damage from misuse of products (including but not limited to: fall, improper usage of device, etc.)
- Purchases from illegal channels
- For commercial use

Aristos Home is not liable for the following situations:

- Loss of data incurred from use of Aristos Home products
- Return of personal items sent to Aristos Home

When returning items with a prepaid shipping label provided by Aristos Home, Aristos Home takes responsibility for any damage or loss incurred during transportation. When returning items for non-quality issues, the buyer assumes responsibility for any damage or loss incurred during transportation. Aristos Home is not liable for providing refunds for non-quality related warranty claims against items damaged during transportation.

FCC WARNING:

This device complies with Part 15 of the FCC Rules. Operation is subject to the following two conditions: (1) This device may not cause harmful interference, and (2) This device must accept any interference received, including interference that may cause undesired operation.

CAUTION:

Changes or modifications not expressly approved by the party responsible for compliance could void the user's authority to operate the equipment.

NOTE:

This equipment has been tested and found to comply with the limits for a Class B digital device, pursuant to Part 15 of the FCC Rules. These limits are designed to provide reasonable protection against harmful interference in a residential installation. This equipment generates, uses, and can radiate radio frequency energy and, if not installed and used in accordance with the instructions, may cause harmful interference to radio communications. However, there is no guarantee that interference will not occur in a particular installation. If this equipment does cause harmful interference to radio or television reception, which can be determined by turning the equipment off and on, the user is encouraged to try to correct the interference by one more of the following measures:

- Reorient or relocate the receiving antenna.
- Increase the distance between the equipment and receiver.
- Connect the equipment into an outlet on a circuit different from that to which the receiver is connected.
- Consult the dealer or an experienced radio/TV technician for help.





Please scan the QR code to
check the product FAQ page

Email: support@aristoshomes.com

Online Customer Service: www.aristoshomes.com

Manufacture: Shenzhen ZTime Technology Co., Ltd.

Address: No.2107, Building2, Foresea Life Center, No.1100 Xingye Road,
Haiwang Community, Xin'an Street, Bao'an District, Shenzhen

Made in China

ARISTOS HOME

爱里斯盾