

蓝牙控制器说明书

145mm

USER INSTRUCTION

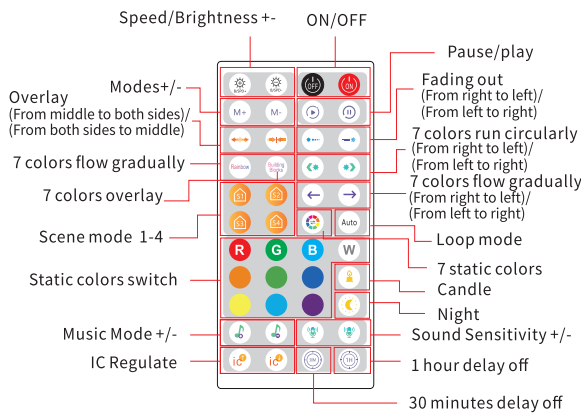
Bluetooth Control Light

Download Surplife APP

Download "Surplife"APP from App Store and Google Play Store,or scan the QR code.
Note: To use the 'Surplife' app, you need to open your phone Bluetooth permission

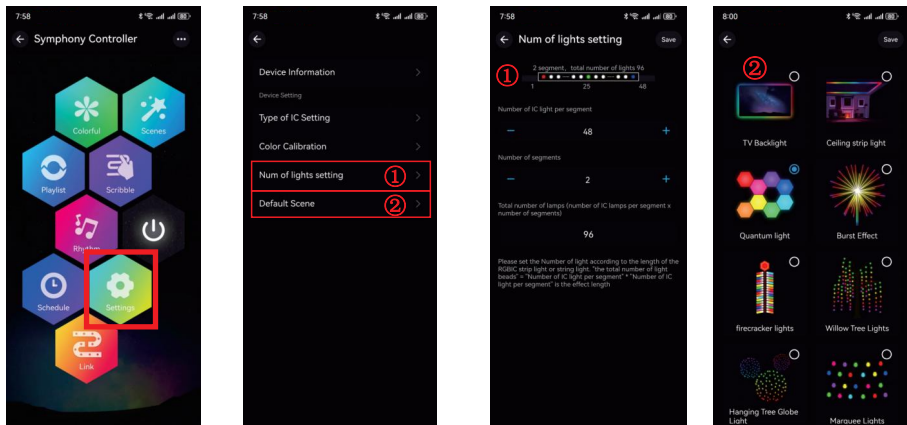


IR remote control parameters



1: About Settings

Click on the "Settings" icon to enter the settings interface, where you can set the type of cell, color calibration, and number of lights for the controlled device
(The number of lights per segment should not exceed 150, and the total number of points should not exceed 2048). The setting of IC points should be based on the application function. And according to Selection of scene types for controlled lighting

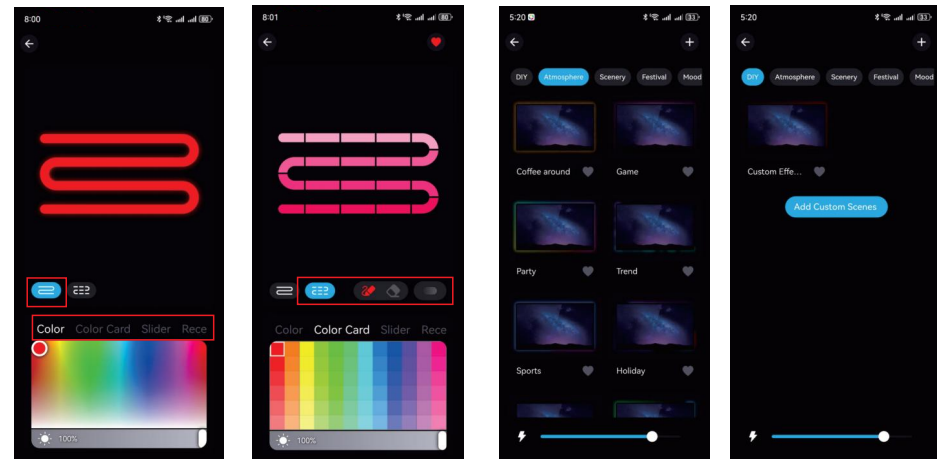


— 1 —

2. Detailed introduction to APP functions:

1) Colorful features

The adjustment of lighting appearance is divided into whole sections and segments, providing different columns for selection or editing of lighting appearance, and adjustable brightness.
At the segmentation boundary, you can freely apply or erase the appearance of segments, and you can also set gradient effects.

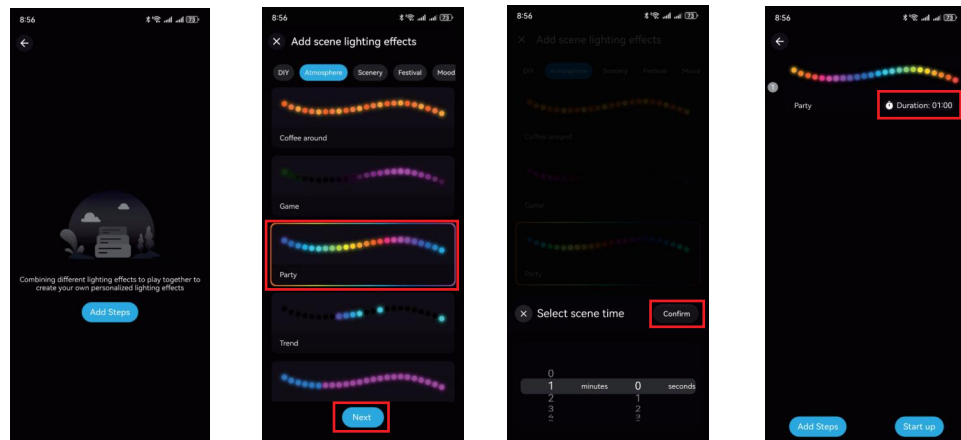


2) Scenario function

Built-in light effect selection for four categories of scene modes: live, scene, festival, and romance, and you can click on "DIY" or "favorite" to enter
Add a new scenario definition.

3) Rotation function

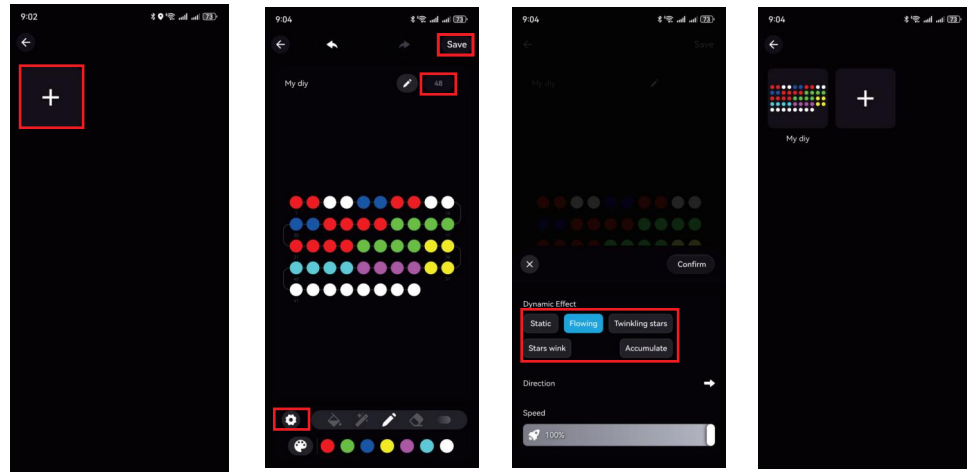
Choose lighting effects for different categories of scene modes and set the lighting effects accordingly. Combine different lighting effects into sequential playback.
Long press draggable order.



— 2 —

4) Smear function

Click the plus sign to define and edit lighting colors and dynamic effects. After setting, click Save. (Before DIY, ensure that the number of lights is consistent with the device, otherwise the lighting effect may not be complete. Please edit the number of ic lights in the "Settings" function)



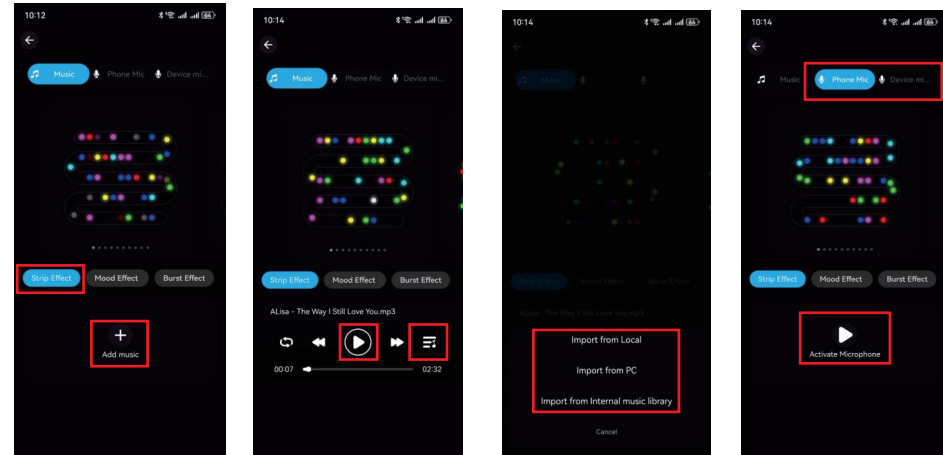
5) Rhythmic function

A Music mode: The light jumps and changes with the rhythm of the music

Click on the 'Add Music' guide to create a music piece or navigate from the built-in music library.
Note: The iOS system needs to download music files from iTunes or follow the instructions to download music from a PC, while the Android system needs to download
A piece of music can be used on the machine.

A MIC

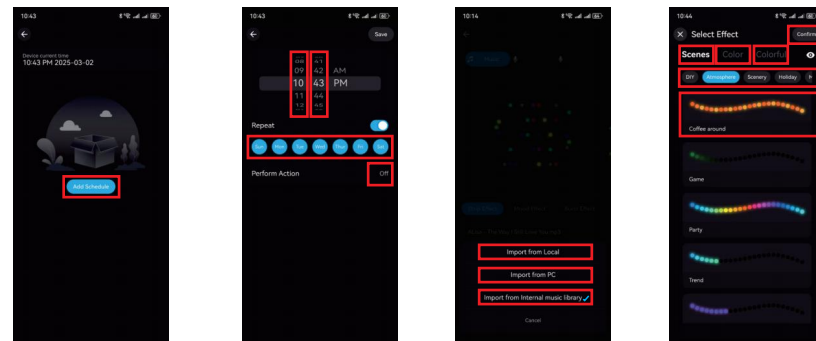
1) Phone Mic 2) Device mic, device mic function (only for voice controlled versions), which converts signals received by mic into different rhythm lighting effects



6) Timing function

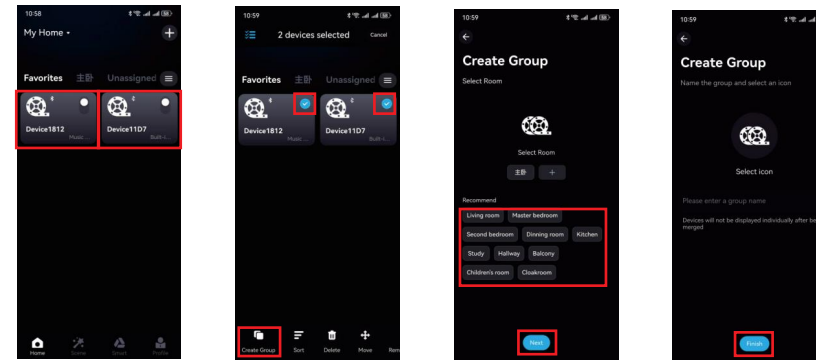
a) According to the time you set, set the lighting switch for the controlled lighting.
b) When turning on the lights, you can choose between colorful or situational lighting effects.

— 3 —



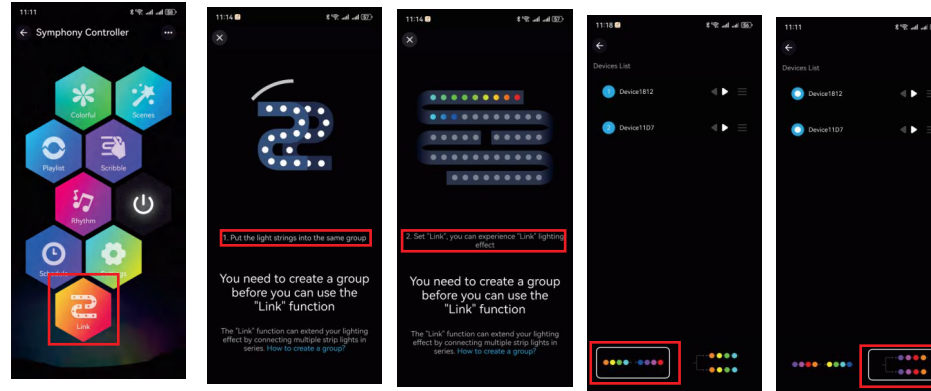
7) Group control function

Classifying multiple controllers into the same group allows for simultaneous control of functions such as key dimming, dimming, and switching of devices within the group



8) Linkage function

Divide the lighting fixtures into the same group, and multiple lighting fixtures can be linked to experience the APP function. Press and drag the lighting order in the device list, and it can also be changed Light direction.



note

- 1) Please use the product in a dry environment;
- 2) Please follow the instructions for the DC voltage range (USB5V) of the transmission voltage, and do not directly use 220V AC power;
- 3) This product is an anode connected type. Do not connect it incorrectly as it can easily cause product malfunction

— 4 —

CP1602-A0

SAFETY INFORMATION

IMPORTANT SAFETY INSTRUCTIONS

READ ALL INSTRUCTIONS

(SAVE THESE INSTRUCTIONS)

	WARNING: Do not submerge the neon flex light in liquids or use the product in the vicinity of standing water or other liquids. WARNING: Do not secure this product with staples, nails, or other sharp objects that may damage the insulation. WARNING: Do not cover this product as the covering may cause the flexible light to overheat and either melt or ignite. WARNING: Do not use if there is any damage to the light or cord insulation. Inspect periodically.
	CAUTION: To avoid possible fire, product damage, or early lamp failure, this neon flex light should not be used in heat-producing appliances. CAUTION: Do not operate neon flex light while coiled. CAUTION: Do not install the neon flex light within 2.9m/9.5ft of a pool or spa. CAUTION: Do not route the cord or flexible light cable through walls, doors, windows, or any similar part of a building or structure. CAUTION: Do not subject flexible lighting to continuous flexing. CAUTION: Do not install near or around flammable or corrosive materials.

FCC AND IC RADIATION EXPOSURE STATEMENT

The device has been evaluated to meet general RF exposure requirement. The device can be in portable exposure condition without restriction. This device uses a non replaceable light source. When the light source reaches the end of its life cycle, the device should be replaced. Not intended for illumination. Only used for creating ambience

WARNING: PROPOSITION 65

This product can expose you to chemicals including Lead, which is known to the State of California to cause cancer and birth defects or other reproductive harm. For more information go to www.P65Warnings.ca.gov.

FCC STATEMENT

This device complies with Part 15 of the FCC Rules. Operation is subject to the following two conditions:

1. This device may not cause harmful interference, and
 2. This device must accept any interference received, including interference that may cause undesired operation.
- Any Changes or modifications not expressly approved by the party responsible for compliance could void the user's authority to operate the equipment.

FCC WARNING

This equipment has been tested and found to comply with the limits for a Class B digital device, pursuant to Part 15 of the FCC Rules.

These limits are designed to provide reasonable protection against harmful interference in a residential installation. This equipment generates, uses, and can radiate radio frequency energy and, if not installed and used in accordance with the instructions, may cause harmful interference to radio communications. However, there is no guarantee that interference will not occur in a particular installation. If this equipment does cause harmful interference to radio or television reception, which can be determined by turning the equipment off and on, the user is encouraged to try to correct the interference by one or more of the following measures:

1. Reorient or relocate the antenna.
2. Increase the separation between the equipment and the receiver.
3. Connect the equipment into an outlet different from that to which the receiver is connected.
4. Consult the dealer or an experienced radio/TV technician for help.

The device has been evaluated to meet general RF exposure requirement.

The device can be used in portable exposure condition without restriction.

— 5 —