

USER MANUAL

Vol.1 Christmas Light String



Made In China



Product List:



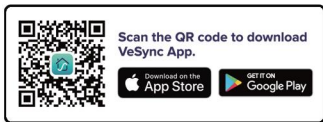
Multiple Color Light String	1
Switching Transformer	1
Controller	1
Remote Control	1

Product Specification:

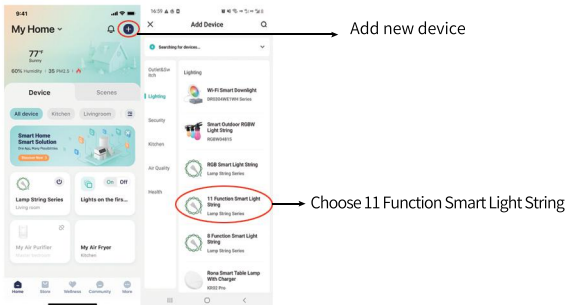
Product Name	Christmas Light String
APP	VeSync
Color	Warm White/Four Color
INPUT	AC120V 50/60HZ
OUTPUT	6W
LED QTY	300L
Total Length	33M
IP Rating	IP44

Powered By VeSync APP

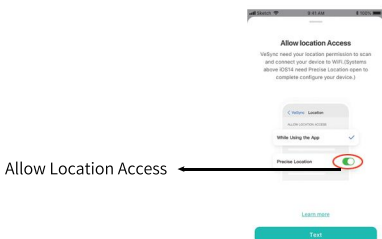
1. Scan the QR code or search it to install the app



2. Enter APP and perform operations



①



②



Add Device

Plug in your device. Press Power
Button turn on the device.



→ Plug in your device

Next

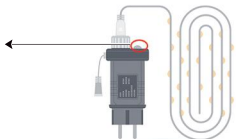
3



Add Device

Press and hold the light button for 5s
until the white light flashes.

If the light does not flash Please Press
and hold the light button for 5s
until the white light flashes
Indicates that the device is power on



Can't find your device?



3.Open Bluetooth and WIFI to connect



Connecting
Connecting to your device...



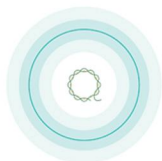
①

Open the Bluetooth
the device will automatically connect

Open WIFI.Choose join WIFI Network
(Only 2.4 GHz WIFI networks are supported)



②



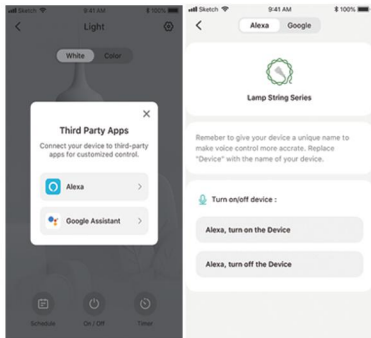
80%

Activating your device. You're almost done!

③

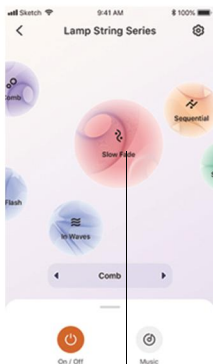
WiFi Connecting:
The connection will be successful
only if the phone
and the light are under the same WiFi

Third Party Apps Control
Support Alexa and Google Assistant
for customized control



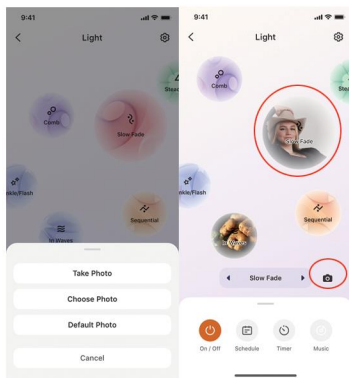
④

4.Function Display



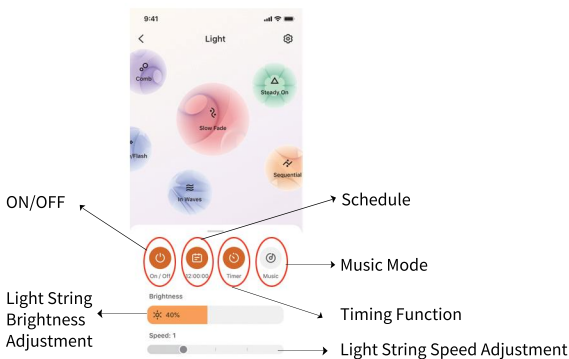
①

Click the bubble to display the function on light string

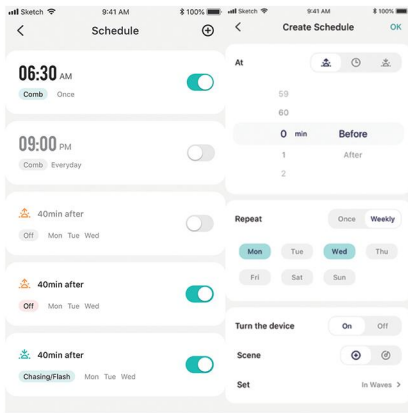


②

Customize the bubble interface by taking photo as you like



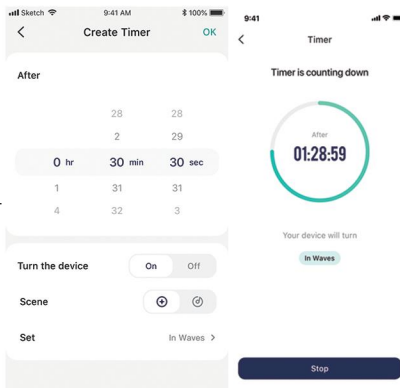
③



Create Schedule as you like

④

Create a countdown Timer



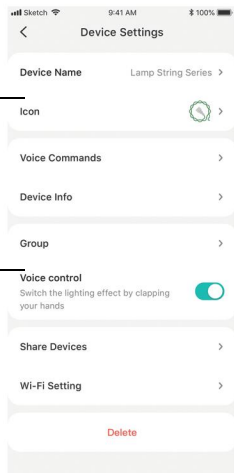
⑤



Three Music Mode For your choice
show three effects on your light string

⑥

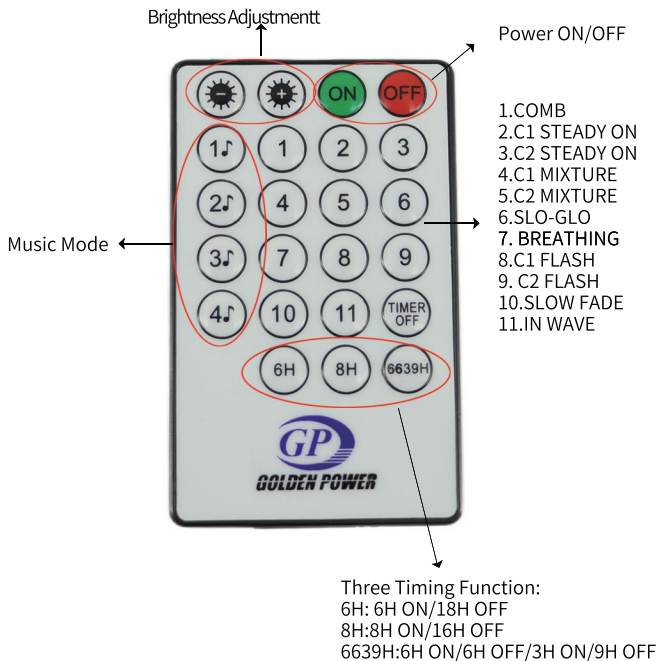
Name your different light strings



Put multiple light strings into one group
to achieve synchronous control

⑦

Remote Control Manual



Safety Precautions:

- Do not use this product in water
- Do not place this product near a fire source
- Do not disassemble this product privately
- Please cut off the power if the product is not used for a long time
- Please pay attention to children to prevent ingesting parts
- If the product cannot be used normally please cut off the power and contact the after-sales team for processing to prevent ingesting parts

This equipment complies with FCC radiation exposure limits set forth for an uncontrolled environment.

This equipment should be installed and operated with minimum distance 20cm between the radiator & your body.

FCC STATEMENT

This device complies with Part 15 of the FCC Rules.

Operation is subject to the following two conditions:

1. This device may not cause harmful interference, and
2. This device must accept any interference received, including interference that may cause undesired operation.

Federal Communication Commission Interference Statement

This equipment has been tested and found to comply with the limits for a Class B digital device, pursuant to Part 15 of the FCC Rules.

These limits are designed to provide reasonable protection against harmful interference in a residential installation.

This equipment generates uses and can radiate radio frequency energy and, if not installed and used in accordance with the instructions, **may cause harmful interference to radio communications.**

However, there is no guarantee that interference will not occur in a particular installation.

If this equipment does cause harmful interference to radio or television reception,

which can be determined by turning the equipment off and on, the user is encouraged to try to correct the interference **by one or more of the following measures:**

- Reorient or relocate the receiving antenna.
- Increase the separation between the equipment and receiver.
- Connect the equipment into an outlet on a circuit different from that to which the receiver is connected.
- Consult the dealer or an experienced radio/TV technician for help.

FCC Caution: Any changes or modifications not expressly approved by the party responsible for compliance could void the user's authority to operate this equipment.

FCC Radiation Exposure Statement:

This equipment complies with FCC radiation exposure limits set forth for an uncontrolled environment.

End users must follow the specific operating instructions for satisfying RF exposure compliance.

To maintain compliance with FCC RF exposure compliance requirements, please follow operation instructions as documented in this manual