

注：  
（打印前请去掉此备注）（去掉空白页）  
尺寸：宽525\*高148 风琴折  
材质：105g双铜

Q & A

Q1: Fail to add the downlight.

A: Check the following issues.

- (1) Make sure the network connection of the gateway is normal.  
For the gateway network pairing instructions, please refer to the gateway user manual.
- (2) Make sure the downlight and the gateway are both powered on.
- (3) Make sure the distance between the downlight and the gateway is within 50ft.

Q2: Can the downlight be dimmed with a dimmer switch or smart switch?

A: Yes. The downlight is fully compatible with the smart switch from Lepower-tec. However, using dimmer switches or smart switches from other brands to control the downlight may result in flickering.

Q3: Can the downlight be voice-controlled?

A: Yes. Before using voice control, make sure that the downlight is connected to the gateway, and the gateway is properly connected to the network. Then set up the voice control in the Prodigytec app.

Q4: If the downlight is turned off with a traditional switch, can it still be controlled with the Prodigytec app?

A: No. Turning off the downlight with a traditional switch will cause the downlight to go offline, and it will not be possible to control the downlight with your phone.

Q5: Can I share the downlight with my family members?

A: Yes. You can share permissions for the downlight with your family members through the Prodigytec app.

Cautions

- When installing, removing, or inspecting the downlight, turn off the circuit breaker directly to ensure that the power is disconnected.
- The operating temperature should be within the range of -10°C to 40°C (14°F to 104°F).
- Do not use the downlight in a humid environment.
- Do not attempt to disassemble, repair, or modify the downlight.
- It is not recommended to use the downlight in small and sealed metal boxes, as this may cause poor signal or heat dissipation problems.
- Do not allow children to install the downlight by themselves.
- Do not install the downlight in potentially hazardous locations, such as near objects filled with liquids.
- Turning off the downlight with wireless methods does not mean the downlight is powered off. Touching the downlight with your hands could be potentially dangerous.

Notice

FCC Statement

This device complies with Part 15 of the FCC Rules. Operation is subject to the following two conditions:  
(1) this device may not cause harmful interference, and  
(2) this device must accept any interference received, including interference that may cause undesired operation.

**Warning:** Changes or modification not expressly approved by the party responsible for compliance could void the user's authority to operate the equipment.

**Note:** This equipment has been tested and found to comply with the limits for a class B digital device, pursuant to Part 15 of the FCC Rules. These limits are designed to provided reasonable protection against harmful interference in a residential installation.

This equipment generates, uses and can radiate radio frequency energy and, if not installed and used in accordance with the instructions, any cause harmful interference will not occur in a particular installation. If this equipment does cause harmful interference to radio or television reception, which can be determined by turning the equipment off and on, the user is encouraged to try to correct the interference by one or more of the following measures:

- (1) Reorient or relocate the receiving antenna.
- (2) Increase the separation between the equipment and receiver.
- (3) Connect the equipment into an outlet on a circuit different from that to which the receiver is connected.
- (4) Consult the dealer or an experienced radio/TV technician for help.  
To maintain compliance with FCC's RF Exposure guidelines, this equipment should be installed and operated with minimum 20cm distance between the radiator and your body: Use only the supplied antenna.

Warranty

12-month warranty for the product.

60-day money-back guarantee for quality issues.

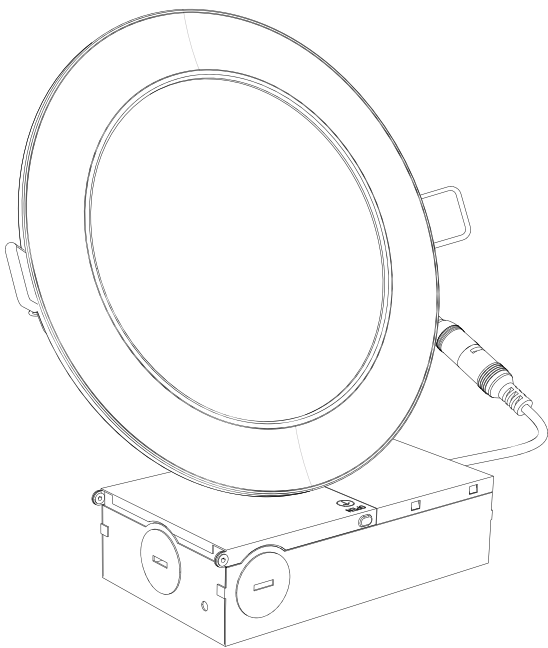
**Note:** Damages caused by the disregard of this user manual are not subject to warranty.

Contact Us

At LEPOWER-TEC, we value your experience. If you have any questions about our products, click 'ask a question' in our store and email us. Our dedicated team will respond promptly to provide the support you need. Thank you for choosing LEPOWER-TEC, and we look forward to serving you.

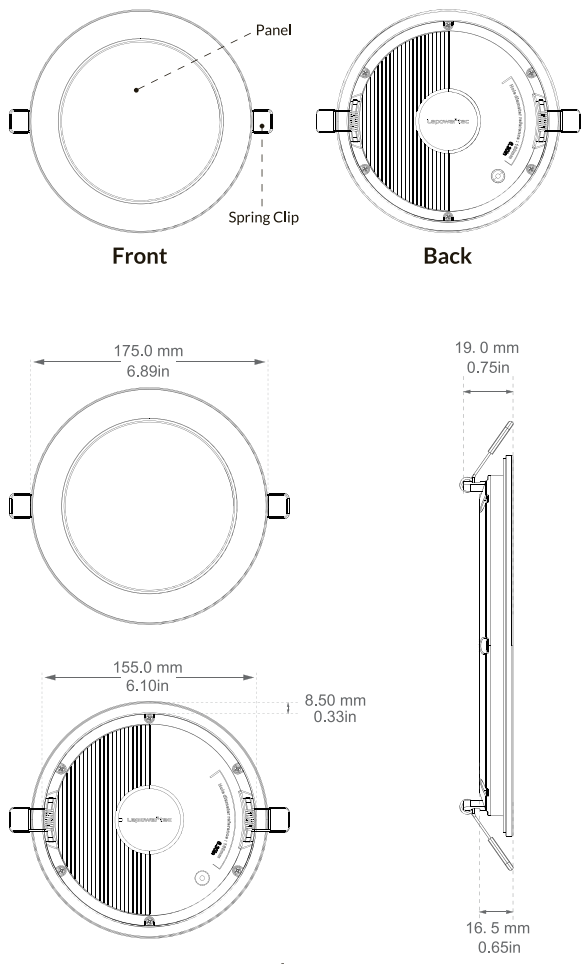
Lepower<sup>+</sup>tec  
Sun-mimicking Smart Downlight

DS-01



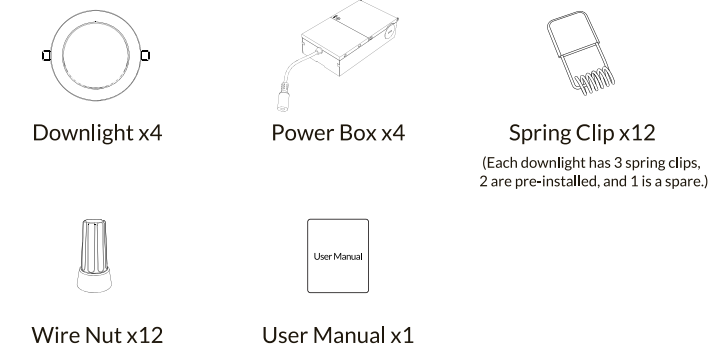
User Manual  
Smarter Natural Lighting, Start With Lepower-tec

Introduction

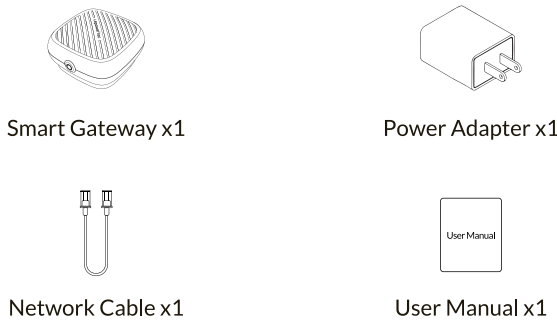


Package Contents

A. 4PCS Downlights



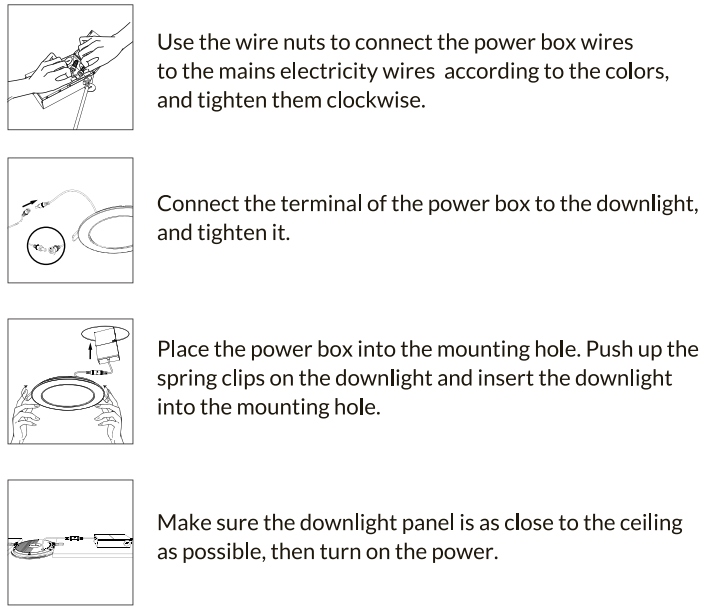
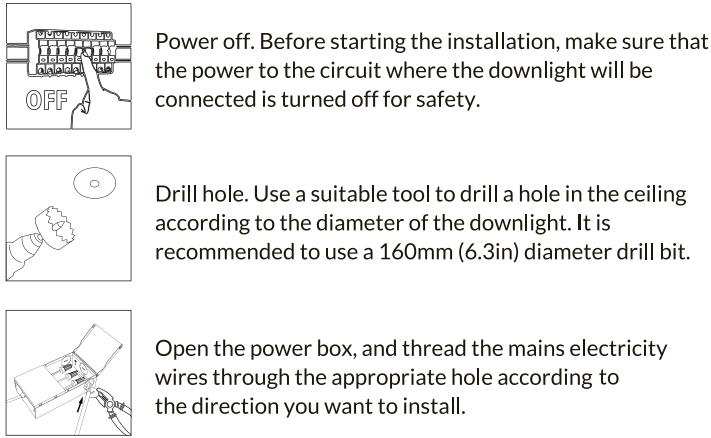
B. 1PCS Gateway



Specification

Model No.	DS-01	Material	Aluminium
Dimensions	6in	Voltage	100~120VAC
Lumen	1100LM	Color Temperature	2700K~6500K
CRI	80+	Operating Temperature	-10°C~40°C (14°F~104°F)

Assembly Instructions



Add the Downlight

(1) Download the Prodigytec app from App Store (IOS device) or Google Play (Android device), and create an account or log in your account.



- (2) Take out the gateway. Refer to the gateway user manual to pair the gateway network.
- (3) Add the downlight. Make sure the downlight is lighting up and that the downlight and the gateway are in the same room. There are 2 ways to add the downlight.
- ① **Use the gateway to add the downlight.** (Recommended, can use all functions.) Once the gateway has completed the network pairing, open the Prodigytec app and go to the home page. Select the gateway, and follow the on-screen instructions to add the downlight as a sub-device of the gateway.
- ② **Use BT to add the downlight.** If the downlight needs to be installed away from the gateway or not in the same room as the gateway, you can choose to add the downlight with BT directly.

- There are 2 ways to add the downlight with BT.**
- a. Automatic search.** Open the Prodigytec app and go to the home page. Select “Add device”, BT will automatically search the downlight. Then follow the on-screen instructions to add the downlight.
- b. Manual discovery.** Open the Prodigytec app and go to the home page. Select “Add device”- “Lighting”- “Sun-mimicking Smart Downlight ”. Then follow the on-screen instructions to add the downlight.

**Note:** Using BT to add the downlight does not support remote control, human-centric lighting or automation functions.

For detailed operation steps and instructions, please refer to the e-User Manual in the app (“Account”-“Help”).