

注：
（打印前请去掉此备注）
尺寸：宽525*高148 风琴折
材质：105g双铜

Notice

FCC Statement

This device complies with Part 15 of the FCC Rules. Operation is subject to the following two conditions:

- (1) this device may not cause harmful interference, and
- (2) this device must accept any interference received, including interference that may cause undesired operation.

Warning: Changes or modification not expressly approved by the party responsible for compliance could void the user's authority to operate the equipment.

Note: This equipment has been tested and found to comply with the limits for a class B digital device, pursuant to Part 15 of the FCC Rules. These limits are designed to provided reasonable protection against harmful interference in a residential installation.

This equipment generates, uses and can radiate radio frequency energy and, if not installed and used in accordance with the instructions, any cause harmful interference will not occur in a particular installation. If this equipment does cause harmful interference to radio or television reception, which can be determined by turning the equipment off and on, the user is encouraged to try to correct the interference by one or more of the following measures:

- (1) Reorient or relocate the receiving antenna.
- (2) Increase the separation between the equipment and receiver.
- (3) Connect the equipment into an outlet on a circuit different from that to which the receiver is connected.

(4) Consult the dealer or an experienced radio/ TV technician for help.

To maintain compliance with FCC's RF Exposure guidelines, this equipment should be installed and operated with minimum 20cm distance between the radiator and your body: Use only the supplied antenna.

IC Statement:

This device complies with Industry Canada licence-exempt RSS standard(s).Operation is subject to the following two conditions:

- (1) This device may not cause interference, and
- (2) This device must accept any interference, including interference that may cause undesired operation of the device.

To maintain compliance with RSS-102 RF Exposure guidelines, this equipment should be installed and operated with minimum 20cm distance between the radiator and your body: Use only the supplied antenna.

Le présentappareilestconf orme aux CNR d' Industrie Canada applicables aux appareils radio exempts de licence. L'exploitationestautorisée aux deux conditions suivantes:

- (1) l'appareil ne doit pas produire de brouillage, et
- (2) l'utilisateur de l'appareildoit accepter tout brouillageradioélectriquesubi, même si le brouillageest susceptible d'encompromettre le fonctionnement.

Pour être conforme aux lignes directrices d'exposition RF RSS-102, cet équipement doit être installé et exploité à une distance minimale de 20cm entre le radiateur et votre corps: n'utilisez que l'antenne fournie.

Warranty

12-month warranty for the product.

60-day money-back guarantee for quality issues.

Note: Damages caused by the disregard of this user manual are not subject to warranty.

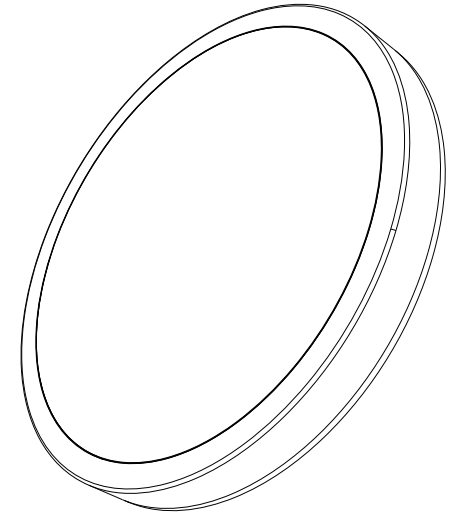
Contact Us

At LEPOWER-TEC, we value your experience. If you have any questions about our products, click 'ask a question' in our store and email us. Our dedicated team will respond promptly to provide the support you need. Thank you for choosing LEPOWER-TEC, and we look forward to serving you.

Lepower[®]tec

BrightLife Smart Ceiling Light

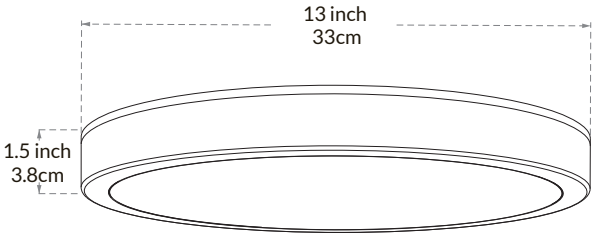
CE-01



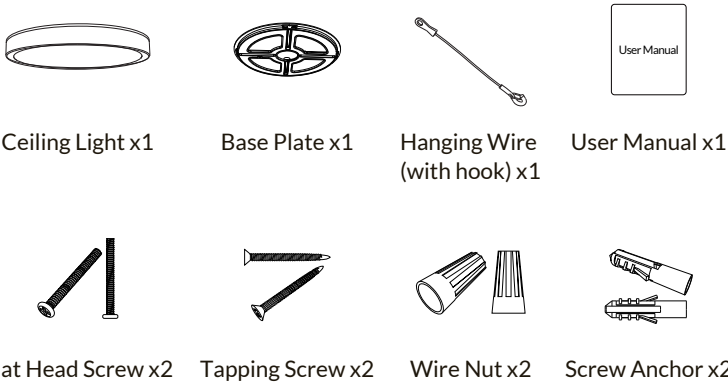
User Manual

Smarter Natural Lighting, Start With Lepower-tec

Introduction



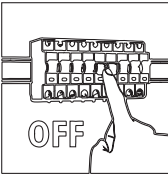
Package Contents



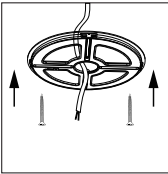
Specification

Model No.	CE-01	Dimensions	13in
Voltage	100~120VAC	Operating Temperature	-10°C~40°C (14°F~104°F)
CRI	80+	Color Temperature	2700K~6500K

Assembly Instructions



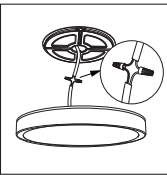
Power off. Before installation, make sure that the power to the circuit where the ceiling light will be connected to is turned off for safety.



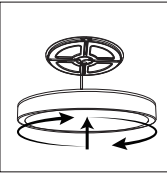
Install the base plate. Select a mounting location in the ceiling, and drill a hole. Then use the screw anchors and tapping screws to secure the base plate. If there is already a mounting hole in the ceiling, use the flat head screws to secure the base plate.



Secure the ceiling light. Use the hook on the hanging wire to secure the ceiling light.



Connect the wires. Use the wire nuts to connect the wires from the ceiling light to the wires in the room. Usually, the fire wire and the neutral wire are required for connection.



Install the ceiling light. Turn the ceiling light clockwise until you hear a “click” sound, the installation is complete. Make sure to check all components are securely installed and not loose.

Add the Ceiling Light

(1) Download the Prodigytec app from App Store (IOS device) or Google Play (Android device), and create an account or log in your account.



(2) Add the ceiling light. There are 2 ways to add the ceiling light.

A. Use WiFi to add the ceiling light (Supports 2.4GHz WiFi only)

Turn on BT on your phone to search for devices. If you need to pair the network for the ceiling light, bring your phone near to the ceiling light as close as possible and follow the on-screen instructions in the app to add the ceiling light. If you fail to add the ceiling light, reset the network and try to add the ceiling light again.

B. Use BT to add the ceiling light (Requires location permissions)

There are 2 ways to add the ceiling light using BT.

a. **Automatic search.** Open the Prodigytec app and go to the home page. Select “Add device”, BT will automatically search for the ceiling light. Then follow the on-screen instructions to add the ceiling light.

b. **Manual discovery.** Open the Prodigytec app and go to the home page. Select “Add device”- “Lighting”- “BrightLife Smart Ceiling Light”. Then follow the on-screen instructions to add the ceiling light.

Note: Using BT to add the ceiling light does not support remote control or automation functions.

(3) Reset the network

Turn on the ceiling light, and use the traditional switch to **turn the ceiling light off and on 5 times** until the ceiling light enters the breathing state. 5s later, the ceiling light will stay on with white light, indicating that the ceiling light has reset the network successfully.

Note: The ceiling light needs to reset the network before connecting to the new network.

For detailed operation steps and instructions, please refer to the e-User Manual in the app (“Account”- “Help”).

Q & A

Q1: Fail to add the ceiling light with the Prodigytec app.

A: Check the following issues.

- (1) Make sure the ceiling light is powered on.
- (2) Make sure you enter the correct WiFi password.
- (3) Make sure your phone is connected to a 2.4GHz WiFi (5GHz WiFi is not supported).
- (4) Make sure the distance between the ceiling light and the router is within 50ft.

Q2: Can the ceiling light be dimmed with a dimmer switch or smart switch?

A: Yes. The ceiling light is fully compatible with the smart switch from Lepower-tec. However, using dimmer switches or smart switches from other brands to control the ceiling light may result in flickering.

Q3: Can the ceiling light be voice-controlled?

A: Yes. You can use voice control with Alexa. Before using voice control, make sure that the ceiling light is connected to the network. Then set up the voice control in the Prodigytec app.

Q4: If the ceiling light is turned off with a traditional switch, can it still be controlled with the Prodigytec app?

A: No. Turning off the ceiling light with a traditional switch will cause the ceiling light to go offline, and it will not be possible to control the ceiling light with your phone.

Q5: Can I share the ceiling light with my family members?

A: Yes. You can share permissions for the ceiling light with your family members through the Prodigytec app.

Cautions

- When installing, removing, or inspecting the ceiling light, make sure the power is off.
- The operating temperature should be within the range of -10°C ~ 40°C (14°F ~ 104°F).
- Do not use the ceiling light in a humid environment.
- Do not attempt to disassemble, repair, or modify the ceiling light.
- Do not touch the ceiling light when it is powered on.
- Do not install the ceiling light in potentially hazardous locations, such as near objects filled with liquids.