



# YUAN

Yuan Series | Intelligent Spinning and  
Telescopic Masturbator Cup ONE

User's Manual



## Bro! Try it and have some fun!

Yuan Series/Intelligent Spinning and Telescopic Masturbator Cup ONE is an adult toy designed and launched by TryFun, a self-run e-commerce brand of NetEase. This product focuses on high-end and interesting multifunctional play. The first batch of products released have three IP characters and soft rubber liners for three distinct experiences. The device does not include a soft rubber liner. Please purchase the appropriate package based on your current circumstances.

Designed by TryFun. Made in China

Please read the User's Manual before use

---

## /Precautions/

① Volume tips: The product using a high-power motor as the power source for thrust will produce a sound of about 65 decibels (depending on the mode in use). Using it in a private environment is recommended.

② Heating Reminding: The soft rubber liner has a heating feature built in. The ambient temperature will have an impact on the heating effect. We advise that you close the lid before activating the heating function, and check the heating state displayed by the heating icon on the display when the ambient temperature is too low and heating is not immediately apparent.

Please choose the appropriate soft rubber liner set based on your unique needs as this product does not come with a matching soft rubber liner.

## /Packing list/



Masturbation cup



USB Type-C charging cable

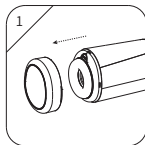


Instruction manual

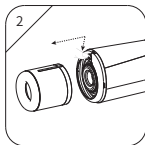
※This product does not come with an adapter in the package. Please use your own smart phone adapter.

## / Way to remove and install the soft rubber liner /

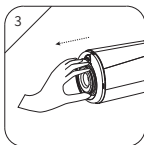
① Removal procedures: Open the lid, click on the push key, take out the leak-proof sleeve from the masturbator cup, and then pinch the outer plastic protective ring of the soft rubber liner so that the soft rubber liner can be pulled out easily.



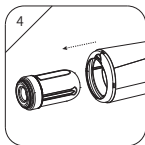
Remove the lid



At the same time as you click on the key (push) with your finger, take out the leak-proof sleeve.



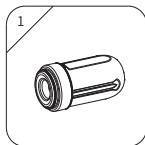
Use your fingers to pinch the edge of the liner and pull it out.



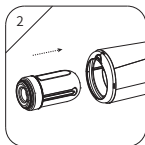
Removal is completed

② Installation Procedures: Insert the soft rubber liner into the slots within the device until you hear a click, which indicates that the soft rubber liner has been successfully inserted. Insert the leak-resistant sleeve into the device slots until you hear a click, which indicates that the installation is complete.

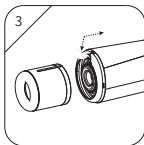
ATTENTION: Please align the liner with the device slots while inserting the liner to avoid misaligning and jamming the liner so that it cannot be pulled out.



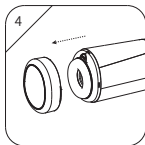
Take out the liner



Insert it while aligning with the device slots (ATTENTION: When inserting the liner, make sure it is aligned with the device slots)



Insert the leak-proof sleeve into the device after aligning it with the device slots.

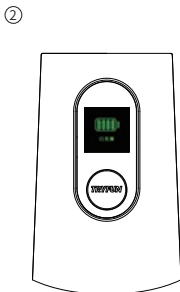
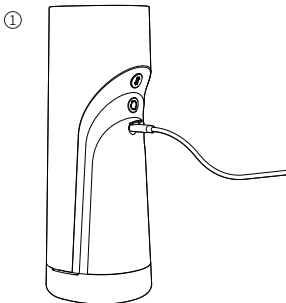


Installation is completed

## / Charging Method /

① [Charging Instructions] Insert the USB Type-C cable into the charging port behind the head.

② [Battery Display] When the product is connected to the charging cable, the device screen will light up and display the charging status. Charging is completed when the display indicates a 100% charging progress.



#### Charging precautions:

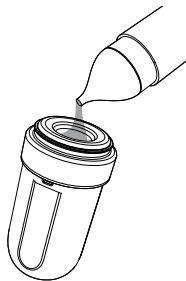
- ※ Please turn off the power first and then connect the product to the USB Type-C cable.
- ※ Keep your hands dry when plugging/unplugging the cable
- ※ Please charge the battery for 3-4 hours for the first time.

#### / User Guidance /

※ Please note that before using the TRYFUN masturbation cup, add some lubricant from the opening of the soft rubber sleeve as shown in the illustration on the right. The absence of lubricant will not only make it harder to use, but even may cause skin bruises and liner damage.

ATTENTION: Apply lubricant to the penis before inserting it into the liner to make insertion easier and prevent skin abrasions and liner damage brought on by lack of lubrication.

※ The lubricant attached to this soft rubber liner can satisfy your use for ten times. It is recommended that you buy the TRYFUN lubricant on the website of NetEase Yanxuan in advance for future use.



## / Master control key /

### ① Power control

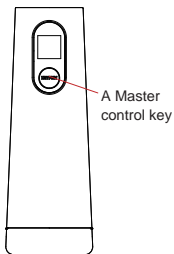
Press and hold for the master power switch 2s to turn the device on or off. After turning on the device, follow the instructions on the display screen for the next operation.

### ② Automatic mode control

a) When the device is turned on, a swift click on the master control key once can enter the corresponding mode of the soft rubber liner; the default mode is 1; and then cycle through 2-3-4-5-1...(each soft rubber liner has 5 exclusive modes corresponding to its character IP).

b) When working in any mode, a quick double click on the master control key will pause the work, and the interface matching the IP character liner will show on the screen. With a swift double click on the master control key, the pause can be canceled and work can resume.

c) By clicking on the master control key three times in a row in any mode, the heating function of the liner can be activated or deactivated. When the heating function is activated, the screen heating icon will flash. When the liner temperature reaches 45 °C, the heating will automatically turn off and the heating icon will disappear from the display. During the heating process, if the master control key is clicked on three times in a row, the heating function can be deactivated and the heating icon on the screen will disappear.

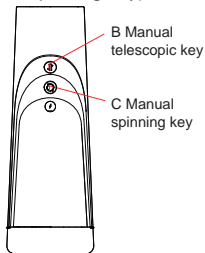


## / Manual mode key (manual telescopic key/manual spinning key) /

### ③ Manual mode control

A click on the manual spinning mode key or manual telescopic mode key in the automatic mode can enter the manual mode, and the device display will show the manual mode interface.

a) In the manual mode, by short clicking on the manual spinning key, the product will start to spin at the first speed level, and click again to switch to the next speed level, cycling through 0-1-2-3-4-5-6-7-8-9-... (a total of 10 modes of spinning speeds). Click on and hold the key to change speeds continuously, and release it to stop at the desired speed and continue working.



b) In the manual mode, by short clicking on the manual telescopic key, the product will start to telescope at the first speed level, and click again to switch to the next speed level, cycling through 0-1-2-3-4-5-6-7-8-9-... (a total of 10 modes of telescoping speeds). Click on and hold the key to change speeds continuously, and release it to stop at the desired speed and continue working.

c) In the manual mode, a single click on the master control key can return to the automatic mode.

#### ④ Device locking and unlocking

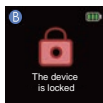
After power on, click on and hold the master control key and telescopic key for 3s to lock the device. The interface of the locked device will be displayed on the screen. To unlock the device, press and hold the master control key and telescopic key for 3S. The display will then display the unlocked device interface.

## / Introduction to display interface /

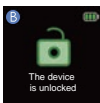
### ① Functional introduction to the main interface



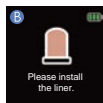
ON/OFF  
interface



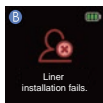
Lock  
successfully



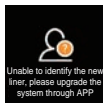
Unlock  
successfully



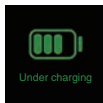
Prompt for empty  
cup without a liner



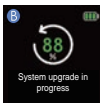
Prompt for liner  
installation failure



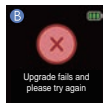
The new liner  
cannot be recognized.



Charging  
status prompt



System  
upgrade progress



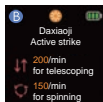
Upgrade  
failure prompt



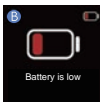
Upgrade  
success prompt



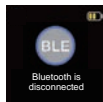
Upgrade  
waiting prompt



Manual status



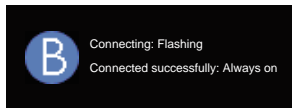
Low battery  
prompt



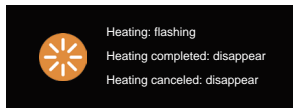
Bluetooth  
disconnection prompt



## ② Introduction to main icon status



Bluetooth icon



Liner heating icon



Battery power icon

## / APP link function /

For more exciting features, please download the TRYFUN APP to experience them.



Sweep and get more ways to play

## / Heating method of the passage /

After turning on the device, insert the soft rubber liner into the device, and the device starts to heat automatically. When heated to 45 °C, the device will turn off the heating function automatically. Wait for the device to send a heating signal. If the device issues an instruction for once more heating, heat to 45 °C as well, then deactivate the heating function, and send the status to the device that heating has been stopped. The heating icon flashes on the screen during the heating process. When the heating is deactivated, the screen heating icon disappears. (The heating effect will be affected by the current ambient temperature)

## / Cleaning and storage /

### Electronic part of the product

The head is the core electronic part of the product and not waterproof. Do not wash it with water or wipe it with a wet towel. In order to ensure the service life of the product, store it in a cool and dry place. Do not put the product in a place that is too wet or too hot.



### 2. Silicone leak-proof sleeve part

This part can be rinsed directly with water. If the sponge is stained with liquid, it can be removed, cleaned, and then put back into the leak-proof sleeve after drying.



### 3. Soft rubber liner part

(1) Take the soft rubber liner out of the cup, open the silicone plug at the bottom of the soft rubber liner, directly put it under the faucet, and rinse the soft rubber inside. After completely cleaning, you can use a clean soft cloth to dry the water stains, then lay the soft rubber liner level, and place it in a cool and ventilated place. After the soft rubber part is thoroughly dried, you can apply special care powder or baby powder to the surface of the soft rubber device to ensure that the product is dry and smooth. Then put the soft rubber liner back into the masturbation cup.



2) Do not clean the product with any cleanser containing alcohol or corrosive components. Please clean it with the skin-care shower gel and then rinse it with lukewarm water below 40 °C or clear water.

3) Keep the product away from the direct sunlight or high temperature environments (e.g., in a car that is parked outdoors under direct sunlight) to avoid material deformation and deterioration.

### Note:

The soft rubber liner is a consumable product. It is recommended that it should be replaced after 30 times of use or every two months (the service life varies with the method of use).

If the soft rubber liner is cracked, please stop using it immediately in order to prevent liquid from leaking into the electronic part and causing damage. To replace the soft rubber liner, please visit the purchase page of this product to buy the soft rubber liner you desire.

## / Specifications /

Product name Yuan Series/Intelligent Spinning and Telescopic Masturbator Cup ONE

Product Model: TF-D1-YUAN-01W

Product Size: 297.6×118.2×104.5mm

Executive standard: Q/ZDB 002-2020

Product material: ABS (acrylonitrile butadiene styrene), TPE (thermoplastic elastomer), silicone, PA (polyamide), and PC (polycarbonate)

Weight: 1267g

There is a built-in 1,200mAh, 7.4V rechargeable lithium battery inside the product

Charging Voltage: 5.0V ===

Charging Current: 1.6A

Rated voltage: 7.4V ===

Rated power: 20W

Charging Time: About 3-4h

Duration: About 1h (depending on the use mode)

※ The electronic part is not waterproof and the soft rubber liner is washable

## / Precautions /

Intended users:

- This product is only suitable for adults 18 years old and above. To avoid infectious diseases, please keep this product for personal use only.
- Please stop using this product if you are feeling unwell.
- Please do not use the product if you are using any medical electronics (such as pacemakers), pregnant, or may suffer physical discomfort.

Storage:

- Please turn off the power of the product and store it properly if it is not used for a long time.
- Do not store the product in direct sunlight or in high temperature (e.g. a car that is parked outdoors under direct sunlight), so as to avoid the possibility of heating or fire due to a fault.
- Please do not remove any part of the product; otherwise the product may be damaged or your safety may be endangered.
- Please do not dry the product with any external heating equipment. Such as microwave oven, hair dryer, etc.

Resetting of Product :

- If the program is out of order or if a function becomes unusable, please turn the product off, charge it, and restart it to recover the function.

## / Names and content of harmful substances contained in the product /

Names and content of harmful substances contained in the product						
Part name	Harmful substance					
	Lead (Pb)	Mercury (Hg)	Cadmium (Cd)	Hexavalent chromium (Cr6+)	Polybrominated biphenyls (PBB)	Polybrominated Diphenyl Ether (PBDE)
Parts in contact with human body (TPE sleeve, silicone)	○	○	○	○	○	○
Non-inflame retarding plastic parts (plastic case, cup cover, USB cable)	○	○	○	○	○	○
Other metal parts (bolts, magnet, springs, USB plug, axle, steel ball)	○	○	○	○	○	○
Internal electronics (PCB panels, electric elements, heating element, battery, motor, nud case, cables)	○	○	○	○	○	○
Internal structure components (plastic parts, silicone parts, and water-absorbing sponge)	○	○	○	○	○	○

This table is formulated in accordance with regulations of SJ/T 11364-2014.

○ means that the content of this harmful substance contained in the homogeneous material of this part is within the limit value specified in GB/ T26572.

X means that the content of this harmful substance contained in at least one of the homogeneous materials of this part is beyond the limit value specified in GB/ T26572.

## / Recycling instructions for product and components /

For the sake of environmental protection, after this product or any of its components becomes scrapped, you as a consumer are responsible for separating the product or any of its components from household garbage and sending it to a qualified recycling site where it will be sorted, disassembled, recycled and reused according to relevant national regulations.

- The battery must be removed from the product before it is abandoned.
- Please confirm that the product is powered off before the battery is removed.
- Dispose of the battery in a safe manner



This electronic information product is a green and environmental-friendly product, containing no toxic and harmful substances or elements and should not be discarded at will.

## / Basic information /

Company: Hangzhou NetEase Yanxuan Trading Co., Ltd.

Address: Room 410, Building No.4, No.599 Wangshang Road, Binjiang District, Hangzhou City, Zhejiang Province

Postcode: 310052

Place of Origin: Shenzhen, Guangdong

Website: [www.tryfun.com](http://www.tryfun.com)

Tel: 400-036-8163

## FCC Warning

This device complies with Part 15 of the FCC Rules. Operation is subject to the following two conditions: (1) This device may not cause harmful interference, and (2) this device must accept any interference received, including interference that may cause undesired operation.

NOTE 1: This equipment has been tested and found to comply with the limits for a Class B digital device, pursuant to part 15 of the FCC Rules. These limits are designed to provide reasonable protection against harmful interference in a residential installation. This equipment generates, uses and can radiate radio frequency energy and, if not installed and used in accordance with the instructions, may cause harmful interference to radio communications. However, there is no guarantee that interference will not occur in a particular installation. If this equipment does cause harmful interference to radio or television reception, which can be determined by turning the equipment off and on, the user is encouraged to try to correct the interference by one or more of the following measures:

- Reorient or relocate the receiving antenna.
- Increase the separation between the equipment and receiver.
- Connect the equipment into an outlet on a circuit different from that to which the receiver is connected.
- Consult the dealer or an experienced radio/TV technician for help.

NOTE 2: Any changes or modifications to this unit not expressly approved by the party responsible for compliance could void the user's authority to operate the equipment.

The device has been evaluated to meet general RF exposure requirement. The device can be used in portable exposure condition without restriction.

## IC Warning

"This device complies with Industry Canada's license-exempt RSSs. Operation is subject to the following two conditions:

- (1) This device may not cause interference; and
- (2) This device must accept any interference, including interference that may cause undesired operation of the device."

« Le présent appareil est conforme aux CNR d'Industrie Canada applicables aux appareils radio exempts de licence.

L'exploitation est autorisée aux deux conditions suivantes : (1) l'appareil ne doit pas produire de brouillage, et

(2) l'utilisateur de l'appareil doit accepter tout brouillage radioélectrique subi, même si le brouillage est susceptible d'en compromettre le fonctionnement. »

The device has been evaluated to meet general RF exposure requirement. The device can be used in portable exposure condition without restriction.

L'appareil a été évalué pour répondre aux exigences générales en matière d'exposition aux RF. L'appareil peut être utilisé en condition d'exposition portable sans restriction.

---

Company: Hangzhou NetEase Yanxuan Trading Co., Ltd.

Address: Room 410, Building No.4, 599 Wangshang Road, Changhe Street, Binjiang District, Hangzhou City

Website: <http://you.163.com>

Postcode: 310052

Tel: 400-0368-163