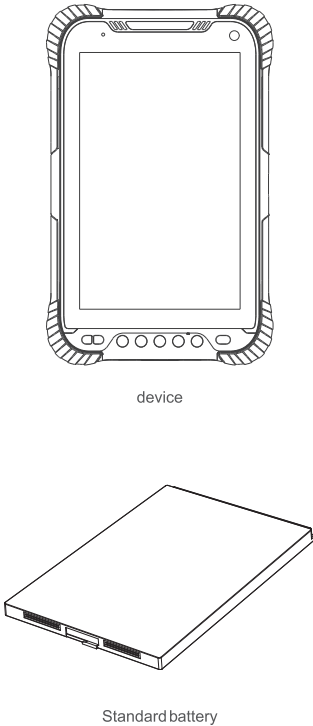
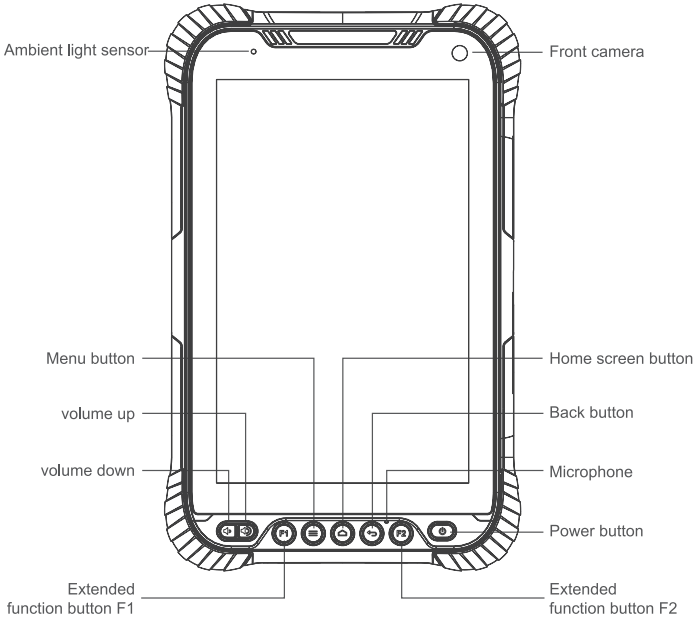


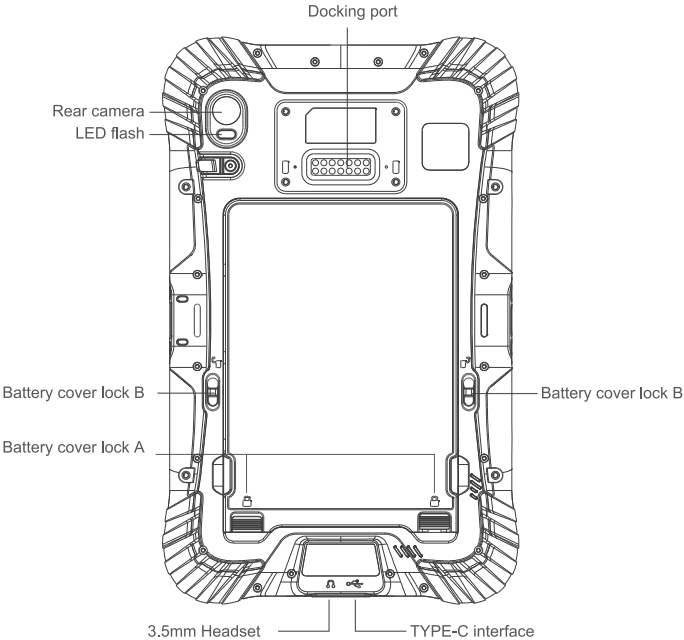
# What's in The Box



# Appearance overview

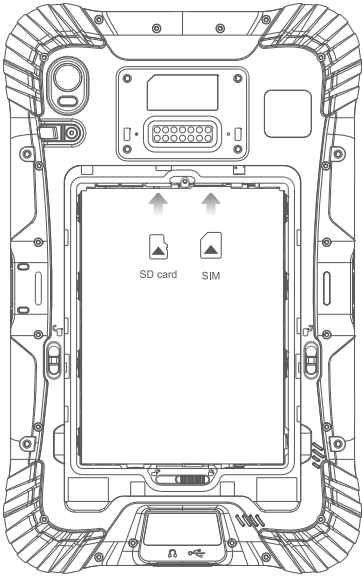


# Appearance overview



# Sim/micro SD Card

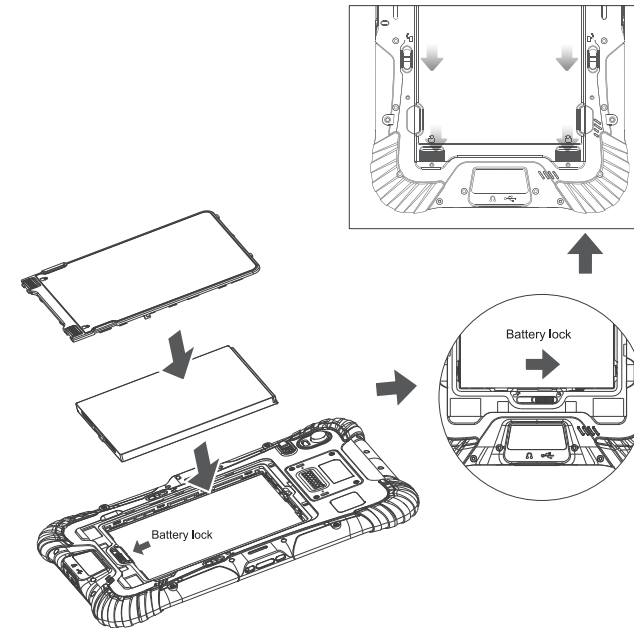
This is how you insert and remove the Nano SIM/micro SD.



## Insert Battery

### To insert the battery

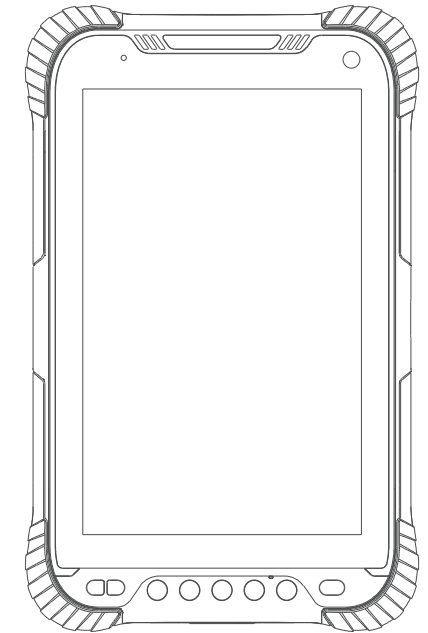
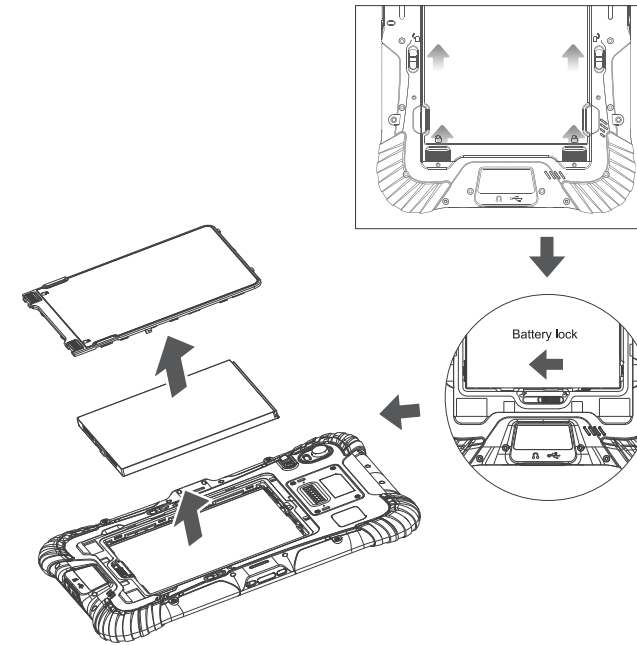
1. Insert the battery
2. Push the battery lock to the close position
3. Attach the battery cover
4. Push the battery cover lock to the close position



## Remove Battery

### To remove the battery

1. Power off the device before removing the battery
2. Push the battery cover lock to the open position
3. Detach the battery cover
4. Push the battery lock to the open position
5. Remove the battery



**Quick Start Guide**

Caution:

Intended for sale and application in a business environment.

Use the Product in the environment with the temperature Between -20°C and 35°C; Otherwise, it may damage your product. Products can only be used below 2000m altitude

For the following equipment:

Product Name: Rugged Android Tablet

Model No.: UA80

Shanghai UniOne Science&Technology CO., Ltd.

E-mail: ll.zheng@unione-rugged.com

hereby declares that this [Name: Rugged Andrid tablet, Model: UA80] is in compliance with the essential requirements and other relevant provisions of Directive 2014/53/EU.



The product shall only be connected to a USB interface of version USB2.0 and that the connection to a power USB is allowed.

**CAUTION**  
**RISK OF EXPLOSION IF BATTERY IS REPLACED**  
**BY AN INCORRECT TYPE.**  
**DISPOSE OF USED BATTERIES ACCORDING**  
**TO THE INSTRUCTIONS**

This product is intended for sale and application in a business environment.

RED Article 10 2

-This product can be used across EU member states

RED Article 10 10

-The product is class 1 product, No restrictions

	BE	BG	CZ	DK	DE	EE	IE
	EL	ES	FR	HR	IT	CY	LV
	LT	LU	HU	MT	NL	AT	PL
	PT	RO	SI	SK	FI	SE	UK (NI)

The device is restricted to indoor use only when operating in the 5150 to 5350 MHz frequency range.

The RF distance between body and product is 5mm

3G

Frequency Range:

WCDMA Band 1: Tx: 1920-1980MHz, Rx: 2110-2170MHz

WCDMA Band 8: Tx: 880-915MHz, Rx: 925-960MHz

RF Output Power:

WCDMA Band 1: 22.22dBm, WCDMA Band 8: 21.70dBm

4G

Frequency Range:

FDD-LTE Band 1: Tx: 1920-1980MHz, Rx: 2110-2170MHz

FDD-LTE Band 3: Tx: 1710-1785MHz, Rx: 1805-1880MHz

FDD-LTE Band 7: Tx: 2500-2570MHz, Rx: 2620-2690MHz

FDD-LTE Band 8: Tx: 880-915MHz, Rx: 925-960MHz

FDD-LTE Band 20: Tx: 832-862MHz, Rx: 791-821MHz

FDD-LTE Band 28: Tx: 703-748MHz, Rx: 758-803MHz

TDD-LTE Band 38: Tx: 2570-2620MHz, Rx: 2570-2620MHz

TDD-LTE Band 40: Tx: 2300-2400MHz, Rx: 2300-2400MHz

Max.RF Output Power:

FDD-LTE Band 1: 22.80dBm, FDD-LTE Band 3: 23.87dBm,

FDD-LTE Band 7: 23.45dBm, FDD-LTE Band 8: 22.80dBm,

FDD-LTE Band 20: 22.82dBm, FDD-LTE Band 28: 22.51dBm,

TDD-LTE Band 38: 23.65dBm, TDD-LTE Band 40: 23.62dBm

Wi-Fi (5GHz)

Frequency Range: 5180-5240MHz

Max. RF Output Power: 15.11dBm (EIRP)

Wi-Fi (5.8GHz)

Frequency Range: 5745-5825MHz

Max. RF Output Power: 12.85dBm (EIRP)

Wi-Fi (2.4GHz)

Frequency Range: 2412-2472MHz for 802.11b/g/n (HT20); 2422-2462MHz for 802.11n (HT40)

Max. RF Output Power: 16.60dBm (EIRP)

Bluetooth

Frequency Range: 2402MHz-2480MHz

Max. RF Output Power: 1Mbps: 8.89dBm; 2Mbps: 9.04dBm

NFC

Frequency Range: 13.56MHz

## **RF exposure statement**

This device meets the government's requirements for exposure to radio waves. The guidelines are based on standards that were developed by independent scientific organizations through periodic and thorough evaluation of scientific studies. The standards include a substantial safety margin designed to assure the safety of all persons regardless of age or health. The SAR limit of USA (FCC) is 1.6 W/kg averaged. Device types: Rugged tablet (FCC ID: 2A96I-UA80) has also been tested against this SAR limit. SAR information can be viewed on - line at <http://www.fcc.gov/oet/ea/fccid/>. Please use the device FCC ID number for search. This device was tested simulation typical 0mm to body. To maintain compliance with FCC RF exposure requirements, use accessories should maintain a separation distance between the user's bodies mentioned above, the use of holsters and similar accessories should not contain metallic components in its assembly, the use of accessories that do not satisfy these requirements may not comply with FCC RF exposure requirements, and should be avoided.

For body worn operation, this device has been tested and meets the IC RF exposure guidelines when used with an accessory designated for this product or when used with an accessory that contains no metal and that positions the handset a minimum of 0 mm from the body. Noncompliance with the above restrictions may result in violation of RF exposure guidelines.

En cas d'usage du corps, cet appareil a été testé et répond aux directives d'exposition aux RF IC lorsqu'il est utilisé avec un accessoire désigné pour ce produit ou lorsqu'il est utilisé avec un accessoire qui ne contient pas de métal et qui place le combiné à au moins 0 mm du corps. Le non-respect des restrictions ci-dessus peut entraîner une violation des lignes directrices sur l'exposition aux RF.

## **FCC Warning**

This device complies with Part 15 of the FCC Rules. Operation is subject to the following two conditions:

(1) This device may not cause harmful interference, and (2) this device must accept any interference received, including interference that may cause undesired operation.

Note: This equipment has been tested and found to comply with the limits for a Class B digital device, pursuant to part 15 of the FCC Rules. These limits are designed to provide reasonable protection against harmful interference in a residential installation. This equipment generates, uses and can radiate radio frequency energy and, if not installed and used in accordance with the instructions, may cause harmful interference to radio communications. However, there is no guarantee that interference will not occur in a particular installation. If this equipment does cause harmful interference to radio or

television reception, which can be determined by turning the equipment off and on, the user is encouraged to try to correct the interference by one or more of the following measures:

- Reorient or relocate the receiving antenna.
- Increase the separation between the equipment and receiver.
- Connect the equipment into an outlet on a circuit different from that to which the receiver is connected.
- Consult the dealer or an experienced radio/TV technician for help.

NOTE 2: Any changes or modifications to this unit not expressly approved by the party responsible for compliance could void the user's authority to operate the equipment.

## **IC WARNING**

This device contains licence-exempt transmitter(s) that comply with Innovation, Science and Economic Development Canada's licence-exempt RSS(s). Operation is subject to the following two conditions:

- (1) This device may not cause interference.
- (2) This device must accept any interference, including interference that may cause undesired operation of the device.

L'émetteur/récepteur exempt de licence contenu dans le présent appareil est conforme aux CNR d'Innovation, Sciences et Développement économique Canada applicables aux appareils radio exempts de licence. L'exploitation est autorisée aux deux conditions suivantes:

1. L'appareil ne doit pas produire de brouillage;
2. L'appareil doit accepter tout brouillage radioélectrique subi, même si le brouillage est susceptible d'en compromettre le fonctionnement.

The device is restricted to indoor use only when operating in the 5150 to 5250 MHz frequency range.

Lorsque l'appareil fonctionne dans la gamme de fréquences de 5150 à 5250 MHz, il est limité à une utilisation en intérieur uniquement.

## **operating instructions**

### **Product Overview**

#### **1. Appearance Characteristics**

Tablet PC is designed with thin and light portable design and simple appearance. With high-definition touch screen, speakers, camera and other features, rugged use with a variety of scenarios use

### **POWER ON AND off**

#### **1. power on**

Press the power button, the screen will display the manufacturer's logo and enter the boot screen. Please be patient and do not press the key frequently during the boot-up process.

#### **2. OFF**

Long press the power button and the screen will display the shutdown option. Choose to shut down and confirm, the tablet will automatically shut down

### **Main interface**

#### **1. Desktop**

After turning on, you will see the main interface of the tablet, also known as the desktop. There will be various applications on the desktop. You can open the corresponding application by clicking on the icon of the

### **Common operations**

#### **1. Touch screen operation**

The main operating mode of tablets is through the touch screen. You can use your fingers to slide on the screen

Click, pinch, and other operations to complete various functions

#### **2. Opening and closing applications**

Click on the application icon on the desktop to open the corresponding application. In the application interface, you can close the application by clicking the close button in the upper right corner

#### **3. Multi task switching**

Long press and hold the multitask switch button on the navigation bar, and the screen will display the currently open application. You can switch between different applications by swiping the screen or clicking on the application icon

#### **4. Setting and Adjusting**

Find the settings icon on the desktop and click to enter the settings interface. In the settings interface, you can perform various settings and adjustments, such as network connection, sound adjustment, screen brightness, etc

## **Network connections**

### **1. Wi Fi connection**

Find the Wi Fi option in the settings interface and click to enter the Wi Fi settings interface. In this interface, you can Search for and connect to available Wi Fi networks

### **2. Bluetooth connectivity**

Find the Bluetooth option in the settings interface and click to enter the Bluetooth settings interface. In this interface, you can type Turn on Bluetooth and search for available Bluetooth devices to connect

## **Frequently asked questions**

### **1.How to take a screenshot?**

Press and hold the power button and volume decrease button simultaneously, and the screen will flash once, indicating a successful screenshot. You can To find the screenshot image in the album

### **2.How to adjust screen brightness?**

Find the display option in the settings interface and click to enter the screen brightness setting interface. In this interface, you can To adjust screen brightness by swiping the screen

### **3.How to clean the cache?**

Find the storage option in the settings interface and click to enter the storage settings interface. In this interface, you can clear the Manage the cache of applications and free up storage space

## **Epilogue**

This operating manual provides you with basic operating instructions for your tablet, hoping to help you better use it And enjoy the convenience brought by tablets. If you have any other questions or concerns, please feel free to contact our customer service personnel, We will wholeheartedly serve you. Wishing you a pleasant use!