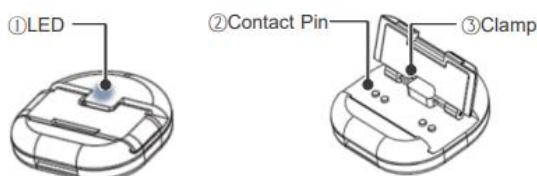


User Manual for Smart Hygiene Technology Detector

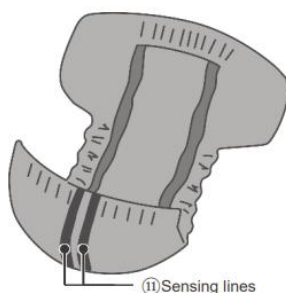
This user manual will introduce how to use urine detector and indicator. Please read before using and keep this user manual.

1. Introduction

Urine Detector



Smart Diaper



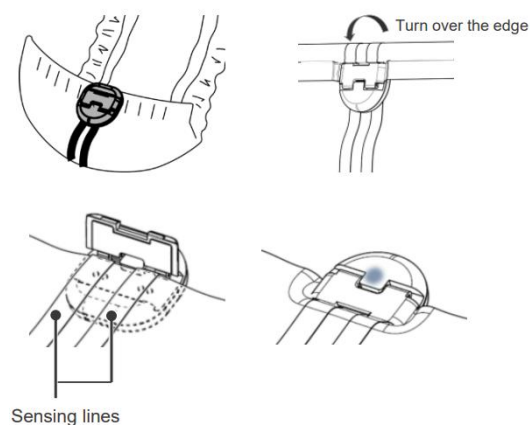
Item	Description
① LED	LED will flash once when the detector is installed and twice when the detector is put off
② Contact Pin	Contact to sensing lines to detect wetness status
③ Clamp	Rubber material used for clamping and fixing
④ Sensing Lines	Detector will clamp to these lines to detect the wetness

2. How to Use

2.1 Urine Detector

2.1.1 Clamp urine detector to smart diaper

- Stick the urine detector on the front belt and open the clamp.
- Turn over the edge of smart diaper and make the sensing lines contact to the contact pins of urine detector.
- Press the clamp then LED will flash that indicates the connection.

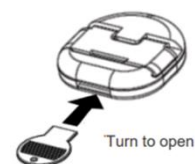


2.1.2 Release urine detector

- Unclamp with a nail or with the included key, and remove it from smart diaper.

2.1.3 Change the battery of urine detector

- In case of low battery, the urine indicator will flash 3 times when urine detector is clamping to smart diaper.
- Prepare a new CR2016 battery.
- Use the key to open the case and then replace the battery.



2.1.4 Clean of urine detector

- The urine detector is waterproof and can be washed with water.
- Clean carefully and do not soak it in disinfectant.

3. Product Specification

Item	Urine Detector
Size	33 * 33 * 8 mm
Weight (battery included)	Around 10 g
Battery	CR2016
Waterproof	IPX6
Transmission	BLE 4.0: Bluetooth Low Energy
Distance	15 meters
Frequency	2.4 GHz
Operating Temperature	10 °C – 40 °C
Storage Temperature	0 °C – 50 °C

FCC Warning Statement: Changes or modifications to this unit not expressly approved by the party responsible for compliance could void the user's authority to operate the equipment. This equipment has been tested and found to comply with the limits for a Class B digital device, pursuant to Part 15 of the FCC Rules. These limits are designed to provide reasonable protection against harmful interference in a residential installation. This equipment generates, uses and can radiate radio frequency energy and, if not installed and used in accordance with the instructions, may cause harmful interference to radio communications.

However, there is no guarantee that interference will not occur in a particular installation. If this equipment does cause harmful interference to radio or television reception, which can be determined by turning the equipment off and on, the user is encouraged to try to correct the interference by one or more of the following measures:

- Reorient or relocate the receiving antenna.
- Increase the separation between the equipment and receiver.
- Connect the equipment into an outlet on a circuit different from that to which the receiver is connected.
- Consult the dealer or an experienced radio/TV technician for help.

This device complies with Part 15 of the FCC Rules. Operation is subject to the following two conditions: (1) this device may not cause harmful interference, and (2) this device must accept any interference received, including interference that may cause undesired operation.

FCC Radiation Exposure Statement

The device has been evaluated to meet general RF exposure requirement. The device can be used in portable exposure condition without restriction.