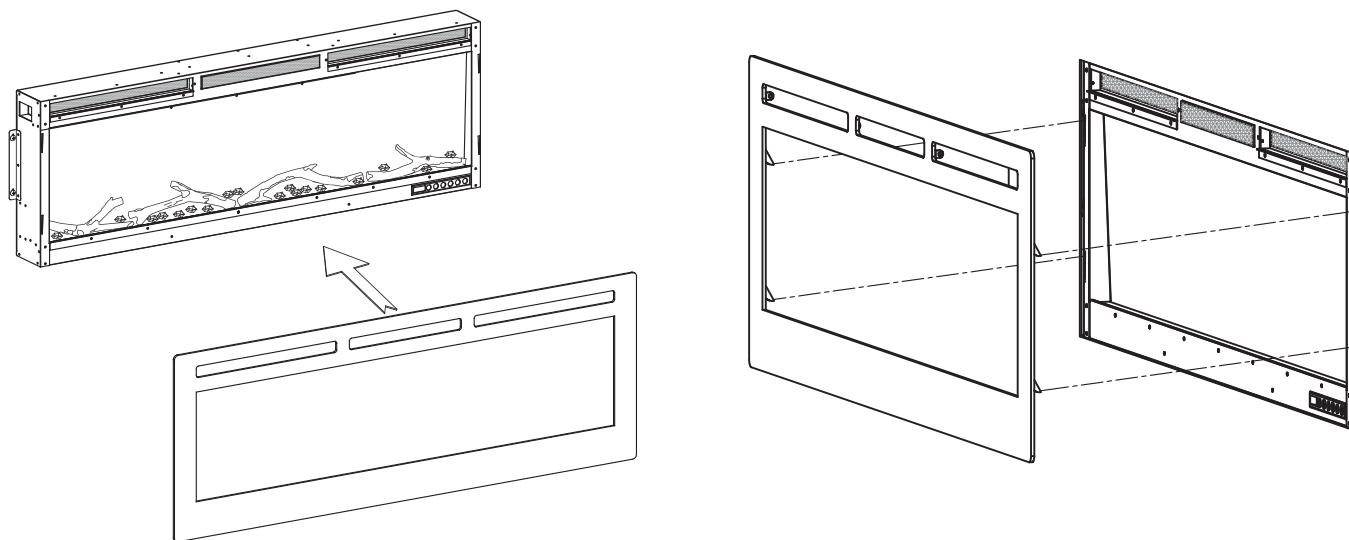


6. Installing the Glass Panel.

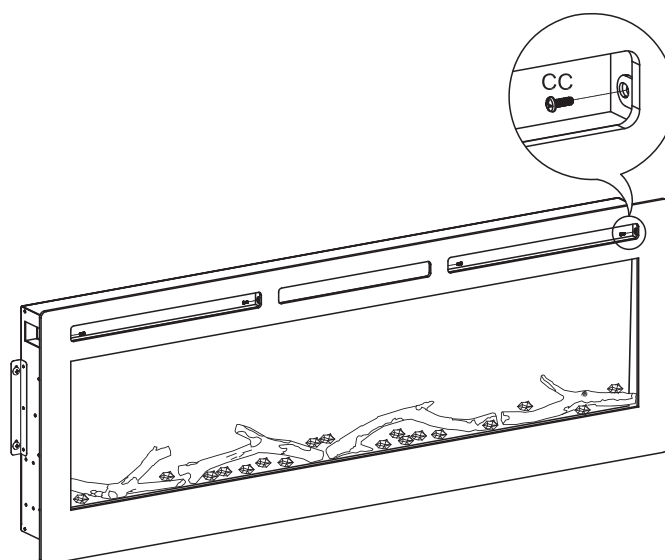
NOTE: This glass front is heavy. It is recommended 2 people to fulfill the assembly at this step to prevent damage.

- Carefully set both hooks of the front glass panel in the firebox.

NOTE: Make sure the glass is properly installed according to the direction and steps below, and fully attached to the firebox so that the control panel can work properly.



- Secure the glass front (B) by fastening 4 Small Screw (CC) and complete the installation.

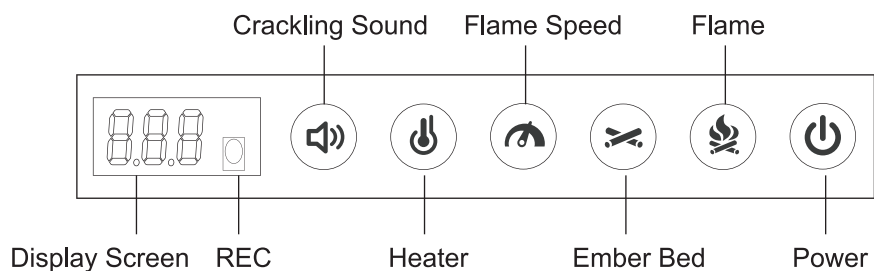


Your fireplace is now ready for use!

Operation

Control Panel Operation

The Control Panel is located in the lower right corner of the fireplace. The function icon lights will turn off after 20 seconds of no operation. Please touch the control panel to wake it up again before using the control panel.



Power Button

- Turn the appliance ON/ OFF.

Flame Button

- Press the Flame Button to active the Flame Color mode.
- Press again to cycle through different colors of the flame. See the table for more detailed information.

Display Value	Flame Color
F01	Orange
F02	Blue
F03	Green
F04	Orange + Blue
F05	Orange + Green
F06	Blue + Green
F07	Orange + Blue + Green
F08	Orange & Blue
F09	Orange & Green
F10	Blue & Green
F1	Orange & Blue & Green
F12	Gradient
OFF	OFF

- Press and hold the Flame Button for 3s and enter the Flame Brightness mode. The Flame Button will flash. Press again to cycle through different brightness settings of the flame. See the table below for more detailed information.

Display Value	Brightness
b5	Level 5
b4	Level 4
b3	Level 3
b2	Level 2
b1	Level 1

- No operation within 10 seconds to exit the Flame Brightness mode.

Ember Bed Button

- Press to active the Ember Bed Color mode.
- Press again to cycle through different colors of the carbon. See the table for more detailed information.

Display Value	Flame Color
H01	White
H02	Red
H03	Orange
H04	Green 1
H05	Green 2
H06	Green 3
H07	Blue 1
H08	Blue 2
H09	Blue 3
H10	Purple 1
H11	Purple 2
H12	Purple 3
H13	Gradient
OFF	OFF

 Flame Speed Button

This option is invalid on the Flame OFF state.

- Press to active the Flame Speed mode.
- Press again to cycle through different speed of the flame. See the table below for more detailed information.

Display Value	Speed
S1	Level 1
S2	Level 2
S3	Level 3
S4	Level 4
S5	Level 5

 Heater Button

- Press to active the Heater function.
- Press again to cycle through different temperature of the heater. See the table for more detailed information.

Display Value	Temperature
99F	99°F
95F	95°F
90F	90°F
85F	85°F
80F	80°F
75F	75°F
70F	70°F
65F	65°F
60F	60°F
OFF	OFF




Display Value	Temperature
37C	37°C
35C	35°C
32C	32°C
29C	29°C
27C	27°C
24C	24°C
21C	21°C
18C	18°C
16C	16°C
OFF	OFF

- Press and hold the Heater Button for 5 seconds to switch between Fahrenheit and Celsius.

 Crackling Sound Button

This option is invalid on Flame OFF state.

- Press to active the Flame Speed mode.
- Press again to cycle through different level of the crackling sound. See the table for more detailed information.

Display Value	Sound
	3
	2
	1
OFF	OFF

Child Lock Mode

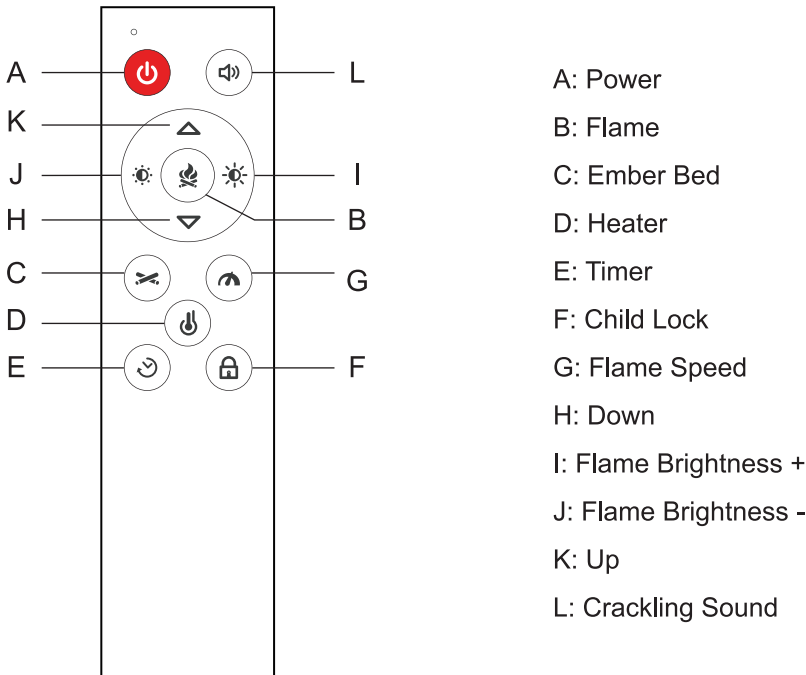
- Press and hold the Ember Bed Button + Crackling Sound Button for 5 seconds to active the Child Lock function. The Display Screen will display “_ _ _” and the control panel will be invalid until you press and hold the Ember Bed Button + Crackling Sound Button for 3 seconds again to exit the Child Lock function.

Display Screen

The digital display will show the numbers for corresponding function of the corresponding operation. The screen flickers during setting operation, exit the setting mode after 10 seconds of no operation, and turns off the screen after another 10 seconds to enter standby.

Remote Control Operation

The remote control can be used up to 13 feet(4 meters) away from the heater, so long as there are no obstructions between the remote control and the heater.



- A: Power
- B: Flame
- C: Ember Bed
- D: Heater
- E: Timer
- F: Child Lock
- G: Flame Speed
- H: Down
- I: Flame Brightness +
- J: Flame Brightness -
- K: Up
- L: Crackling Sound



Power Button

- Turn the appliance ON/ OFF.



Flame Button

- Press the Flame Button to turn the Flame LED ON/OFF.
- Press Up and Down button to choose the flame color.



Ember Bed Button

- Press the Ember Bed Button to turn the Ember Bed LED ON/OFF.
- Press Up and Down button to choose the ember bed color.



Heater Button

- Press the Heater Button to turn the Heater ON/OFF.
- Press Up and Down button to choose the temperature of the heater.



Timer Button

- Press the Timer Button to turn the Timer ON/OFF
- Press Up and Down button to choose the delay OFF time. See the table for more detailed information.

Display Value	Time
0.5H	0.5 hr
1H	1 hr
2H	2 hr
3H	3 hr
4H	4 hr
5H	5 hr
6H	6 hr
7H	7 hr
8H	8 hr
9H	9 hr
10H	10 hr
11H	11 hr
12H	12 hr
OFF	OFF

Child Lock

- Press the Child Lock Button to turn the Child Lock function ON/OFF.

Note: On the child lock mode, you can turn the appliance OFF by the remote control, and the other keys of the remote control do not work.

Flame Speed

It is invalid on Flame OFF state.

- Press to active the flame speed mode.
- Press Up and Down button to choose the flame speed.

Up Button / Down Button

- Press the Up and Down Button to choose the corresponding setting.
- The default mode is to adjust the flame color.

Brightness+ Button / Brightness - Button

- Press to change the flame brightness.

Crackling Sound

It is invalid on Flame OFF state.

- Press the Crackling Sound Button to turn the crackling sound ON/OFF.
- Press Up and Down Button to adjust the crackling sound.

INSERTING BATTERIES IN THE REMOTE

Press and glide the battery cover on the rear of the remote, remove the cover. Insert two new AAA 1.5V batteries into the battery compartment. Make sure the polarity is correct.

Battery is not included in the package because of transportation safety.



CAUTION: Do not mix old and new batteries. Do not mix alkaline, standard (carbon-zinc), or rechargeable (ni-cad, ni-mh, etc) batteries.

DISPOSAL OF USED BATTERIES

Battery may contain hazardous substances which could endanger the environment and human health.



This symbol marked on the battery and or packaging indicates that used battery shall not be treated as municipal waste. Batteries should be disposed of at an appropriate collection point for recycling. By ensuring the used batteries are disposed of correctly, you will help prevent potential negative consequences for the environment and human health. The recycling of materials will help to conserve natural resources. For more information about the recycling of used batteries, please contact your local municipality waste disposal service.

FCC Warning

15.19 Labeling requirements.

This device complies with part 15 of the FCC Rules. Operation is subject to the following two conditions: (1) This device may not cause harmful interference, and (2) this device must accept any interference received, including interference that may cause undesired operation.

15.21 Information to user.

Any Changes or modifications not expressly approved by the party responsible for compliance could void the user's authority to operate the equipment.

15.105 Information to the user.

Note: This equipment has been tested and found to comply with the limits for a Class B digital device, pursuant to part 15 of the FCC Rules. These limits are designed to provide reasonable protection against harmful interference in a residential installation. This equipment generates uses and can radiate radio frequency energy and, if not installed and used in accordance with the instructions, may cause harmful interference to radio communications. However, there is no guarantee that interference will not occur in a particular installation. If this equipment does cause harmful interference to radio or television reception, which can be determined by turning the equipment off and on, the user is encouraged to try to correct the interference by one or more of the following measures:

- Reorient or relocate the receiving antenna.
- Increase the separation between the equipment and receiver.
- Connect the equipment into an outlet on a circuit different from that to which the receiver is connected.
- Consult the dealer or an experienced radio/TV technician for help.

FCC RF Radiation Exposure Statement:

- 1.This Transmitter must not be co-located or operating in conjunction with any other antenna or transmitter.
- 2.This equipment complies with RF radiation exposure limits set forth for an uncontrolled environment.

This equipment should be installed and operated with minimum distance 20cm between the radiator and your body.

IC Warning

This device complies with Industry Canada's licence-exempt RSSs. Operation is subject to the following two conditions:

- (1)This device may not cause interference;
- (2)This device must accept any interference, including interference that may cause undesired operation of the device.

The information listed above provides the user with information needed to make him or her aware of a RF exposure, and what to do to assure that this radio operates within the FCC exposure limits of this radio.

The device complies with RF specifications when the device used at 20cm from the body.Third-party belt-clips, holsters, and similar accessories used by this device should not contain any metallic components. Body-worn accessories that do not meet these requirements may not comply with RF exposure requirements and should be avoided. Use only the supplied or an approved antenna.

Cleaning & Maintenance

- Always turn the fireplace OFF and unplug the power cord from the outlet before cleaning, performing maintenance, or moving the fireplace. Failure to do so could result in electric shock, fire, or personal injury.

Metal:

- Buff using a soft cloth, slightly dampened with a citrus oil-based product.
- Do not use brass polish or household cleaners as these products will damage the metal trim.

Glass:

- Use a good quality cleaner sprayed onto the cloth or towel. Dry thoroughly with a paper towel or lint-free cloth.
- Never use abrasive cleaners, liquid sprays, or any cleaner that could scratch the surface of the appliance.

Plastic:

- Wipe gently with a slightly damp cloth and a mild solution of dish soap and warm water.
- Never use abrasive cleaners, liquid sprays, or any cleaner that could scratch the surface.

Vents:

- Use a vacuum or duster to remove dust and dirt from the fireplace and vent areas.

Maintenance

- **RISK OF ELECTRIC SHOCK! DO NOT OPEN** any panels. No user-serviceable parts inside.

Electrical and Moving Parts:

- The fan motors are lubricated at the factory and will not require lubrication.
- Electrical components are integrated in the fireplace and are not serviceable by the customer.

Storage:

- Store fireplace in a clean, dry place when not in use.

Troubleshooting

Customer Support: support@turbro.com

Problem	Possible Cause(s)	Corrective Action
The fireplace doesn't operate	The fireplace is not plugged in.	Make sure the fireplace is plugged into a standard 120V outlet.
	A circuit breaker is tripped or a fuse is blown.	Check additional appliances on the circuit. Ideally, the □fireplace should be on a dedicated 15-amp circuit.
	The vents are dirty or clogged.	Unplug the unit. Clear the vent area of dust and debris. Wait ten minutes, plug the unit in again, and turn on the □fireplace.
	<ul style="list-style-type: none"> • The ON/OFF switch is defective. • There is loose wiring. • The fireplace switch is defective. • The fireplace assembly is defective. 	Contact customer service.
Power is ON but the flame effect is not visible or flicker	The fireplace is not operating correctly.	Contact customer service.
Excessive noise when the replace is operating	<p>The fan is defective.</p> <p>The replace assembly is defective.</p>	Contact customer service.

Warranty Information

TURBRO provides a 1-year limited warranty for TURBRO Heater, from the date of purchase, subject to the following conditions and limitations outlined below.

WHAT IS COVERED?

- This warranty is limited to the repair or replacement of part(s) proved to be defective in material or workmanship, after said defect is confirmed by the manufacturer's inspection.
- The manufacturer may, at its discretion, fully discharge all obligations with respect to this warranty by refunding the wholesale price of the defective part(s).

WHAT IS NOT COVERED?

- Damage caused by the owner when attempting to fix or alter the product themselves.
- Damage caused by misuse, abuse, neglect, alterations, or unauthorized repair.
- Natural depreciation.
- Any alteration misuse of the product will nullify this warranty.
- This warranty is non-transferrable, which is effective for the original buyer from the authorized seller only.

HOW TO REQUEST WARRANTY SERVICES?

- To obtain the benefit of this warranty, please leave a message online (www.turbro.com/contact), or send an email to support@turbro.com.

WHAT WILL TURBRO DO?

- Repair the item.
- Replace the item if not repairable.
- Refund the item under certain circumstances.

Warranty Registration

Thank you for purchasing a TURBRO Electric Fireplace!

We're extremely happy that you have decided to join us.

To thank you we're giving you a warranty extension. All you need to do is register your new product at <https://www.turbro.com/pages/warranty-registration>. Once it's registered, you'll get a 1-year extension on the 1-year manufacturer warranty for a total of 2 years. It's that easy!

TURBRO



© Katmai Technology Limited

support@turbro.com

www.turbro.com

