

# USER MANUAL

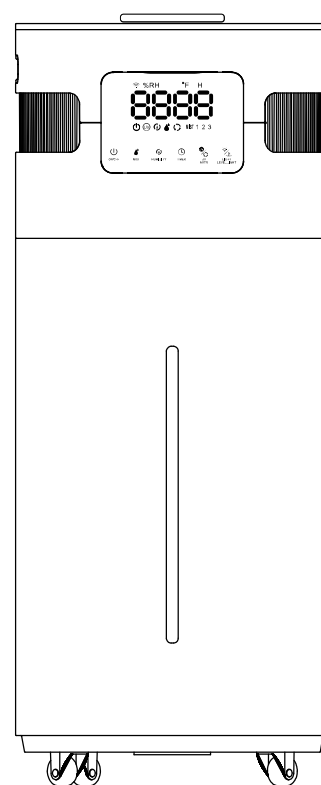
## Humidifier

Greenland GLH20WIFI

Thank you for purchasing our product.

Please read this instruction manual carefully  
before use.

# TURBRO



**CONTENTS**

**SAFETY GUIDE .....02**

**GETTING TO KNOW YOUR HUMIDIFIER.....04**

**SPECIFICATIONS .....06**

**GETTING STARTED .....06**

**USING YOUR HUMIDIFIER .....09**

**MAINTENANCE AND CLEANING .....16**

**TROUBLESHOOTING.....18**

**FCC STATEMENT .....19**

**FCC RADIATION EXPOSURE STATEMENT.....20**

**ATTRIBUTIONS .....20**

**Warranty .....21**

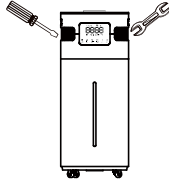
# SAFETY GUIDE

- Turn off the machine before moving it.
- When the machine is working, do not separate the water tank from the base.
- Do not block the outlet or add water to the mist outlet which may cause water leakage, deformation, or failure and void the warranty.
- This machine requires using pure water below 113°F and use at room temperature between 41 to 104°F.
- The power cord should not be scratched, damaged, knotted, pressed against heavy objects, clamped, or processed. Otherwise, it may cause electric shock, short circuit, or fire.
- Do not connect to a socket that exceeds the rated voltage and don't use an extension cable to avoid fire or electric shock.
- Do not unplug the power plug with wet hands, otherwise, it may cause electric shock or injury.
- Under thunderstorm weather or no use for a long time, please unplug the power supply.
- Do not use acidic detergent to clean the main body. If the detergent remains, it may produce toxic gas.
- Do not deliberately inhale the spray mist, especially for people with sensitive respiratory tracts.
- Do not put essential oil into the main body/water tank, which may cause water leakage, corrosion, deformation, or damage.
- Do not insert your fingers or other things into the water inlet or air outlet or the gap which may cause damage to the machine or electric shock.
- When not in use for a long time (more than 24 hours), pour out the water in the water tank to prevent mold or impurities from harming your health.
- Do not cover the nozzles while the humidifier is on. Doing so may damage the humidifier.

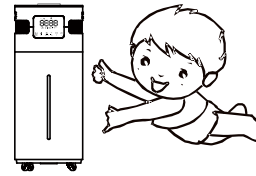
## ! CAUTION



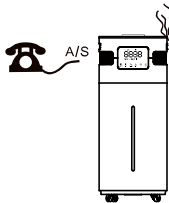
1. Do not disassemble or modify the machine as this will void the warranty.



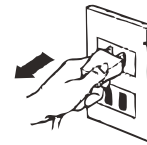
2. Keep this machine out of reach of children. Children should only use this machine under the close supervision of adults.



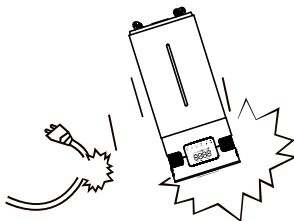
3. If there is any fault happen, please unplug it immediately and contact us via support@turbro.com.



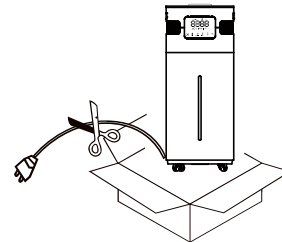
4. Unplug the power plug when filling and cleaning.



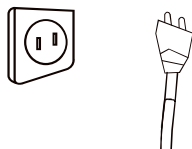
5. Power cord with damage or product fall or drop, please call the professional guy to repair and detect before using.



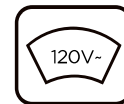
6. Please cut the power cord when disposing this product; also any component that may.



7. Be sure the plug is intact before using, in case any accident.



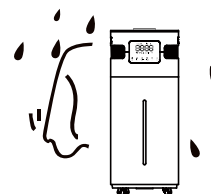
8. Be sure the power supply voltage must be the same as the rated voltage of this product.



9. Do not drop the machine into the water, do not operate it with wet hand.

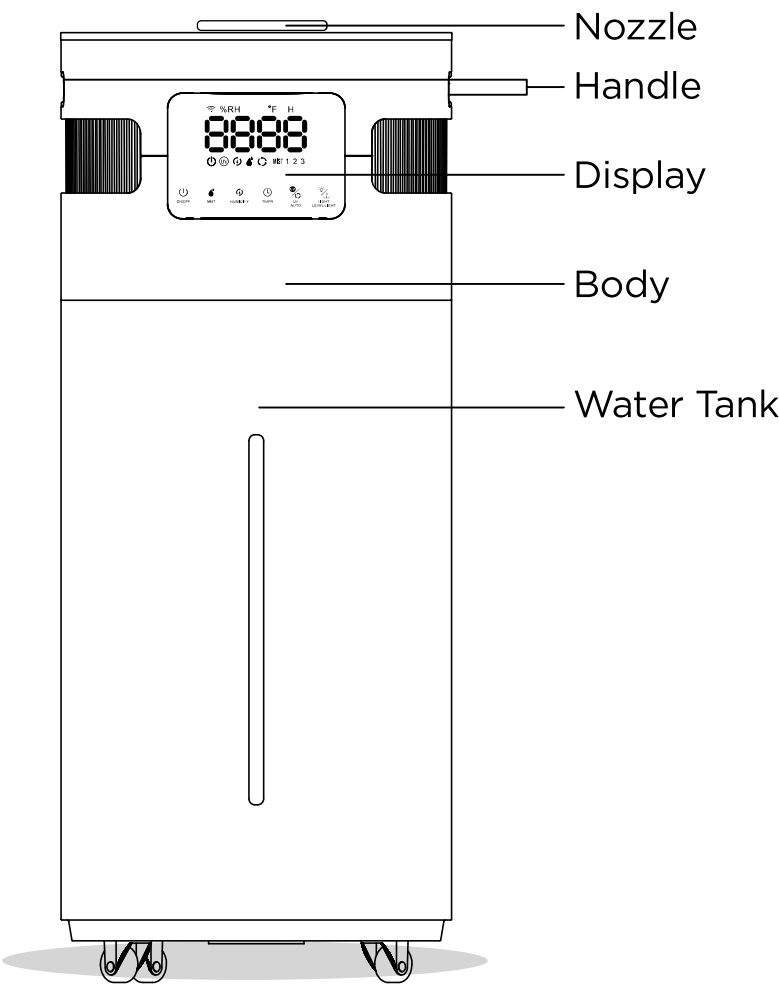


10. Keep away from any heat source.

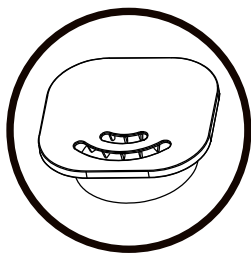


# GETTING TO KNOW YOUR HUMIDIFIER

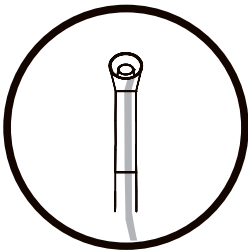
## PRODUCT DETAIL



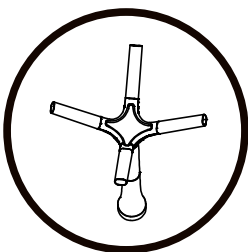
### 3 Different Nozzles



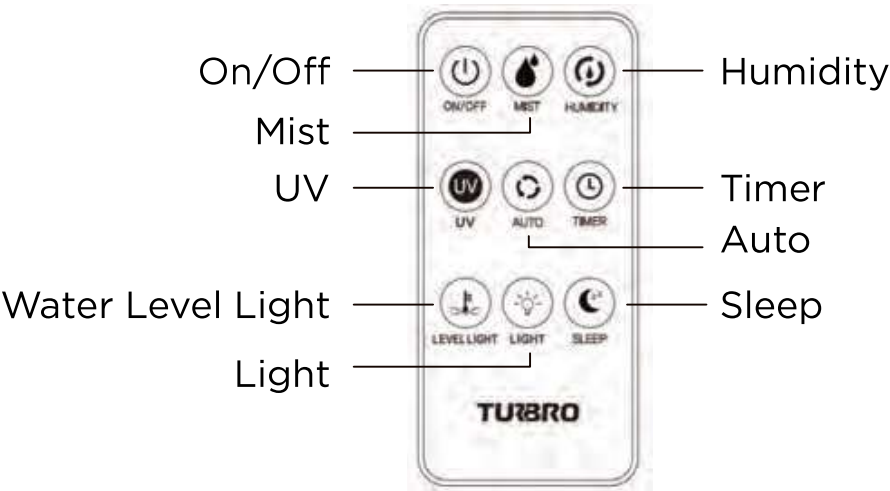
2 Ways



Extension Tube



4 Ways



Remote Control

## PRODUCT STRUCTURE

**A.** Sink

**B.** Atomizer

**C.** Remote Control Holder

**D.** UV Lamp

**E.** Power Cord

**F.** Air Outlet

**G.** Water Filter

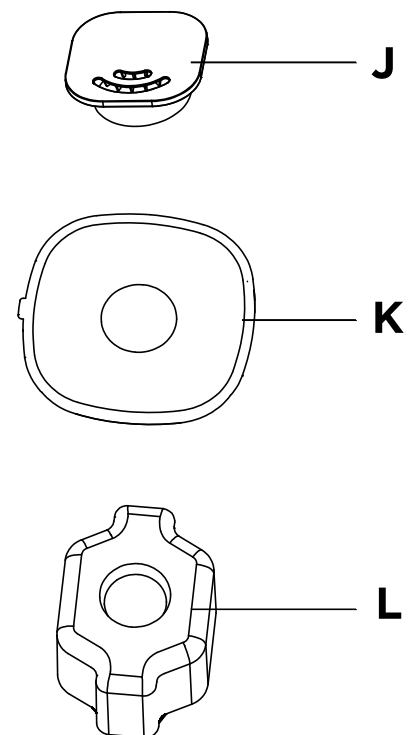
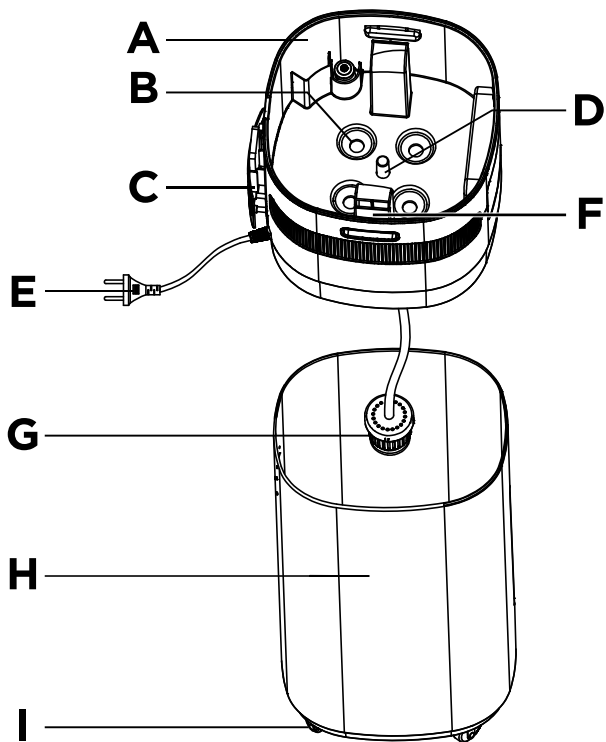
**H.** Water Tank

**I.** Wheels

**J.** Nozzle

**K.** Cover

**L.** Mist Cover



## SPECIFICATIONS

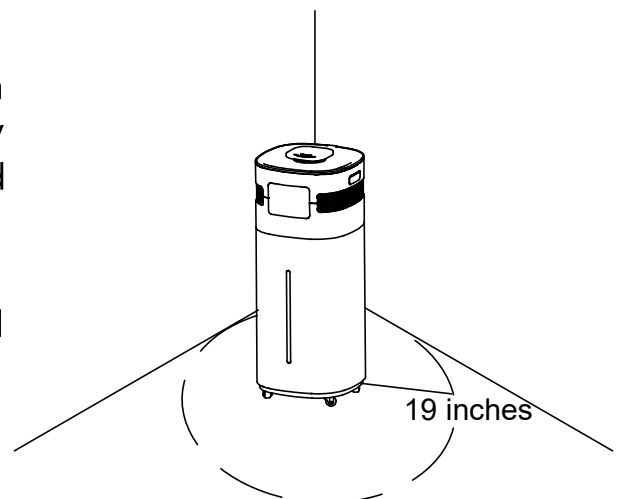
Product Name	Humidifier
Model Number	GLH20WIFI
Voltage	120V/60Hz
Power	105W
Capacity	20L
Mist Output	700-1000ML/H
Noise	≤35dB
Timer	1-12 H
Safety Function	Waterless Auto Shut-off
Dimensions	10.4 x 11.3 x 25.9 Inches
Weight	9.5 Lbs

## GETTING STARTED

### PLACEMENT

This humidifier should be placed on a firm floor and at least 19 inches of space away from walls, furniture, furnace, household appliances, etc.

Please do not use it on the following occasions to avoid water leakage, signal interference or injury, etc.



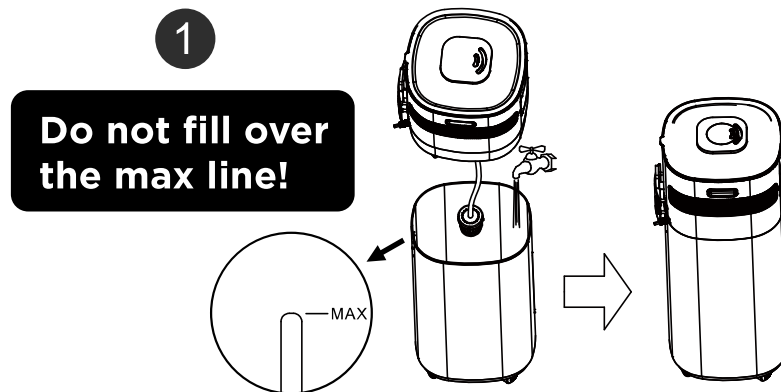
- ❶ Direct sunlight.
- ❷ On an unstable platform.
- ❸ With high temperatures, humidity, and/or dust.
- ❹ Near an air conditioner, furnace, heater, or stove.
- ❺ Near mobile phones, computers, and other precision instruments.
- ❻ Near the radio and other objects that emit radio waves.

## TWO WAYS TO ADD WATER

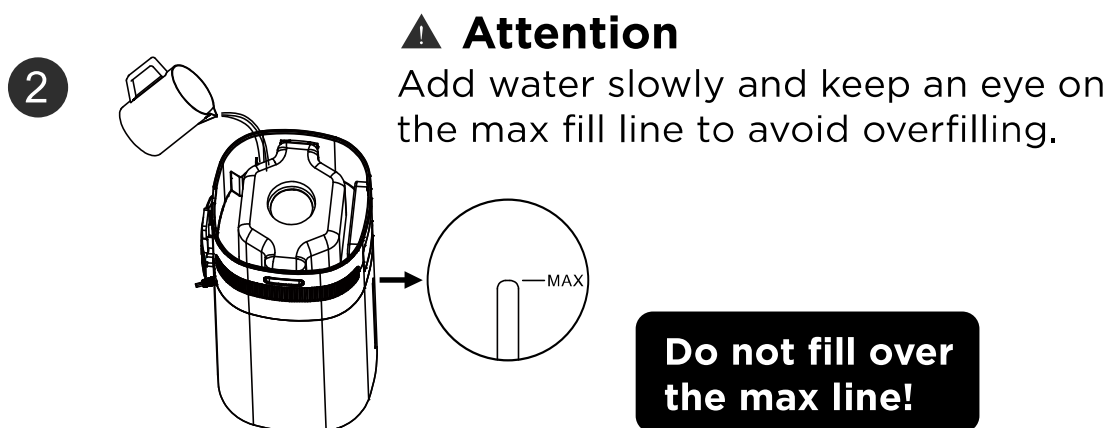
Note: We recommend using purified or distilled water to fill the tank to prevent white mineral buildup.

- ❶ Take out the body and add water into the tank.

This is the recommended way.



- ❷ Open the cover and add the water directly into the tank.

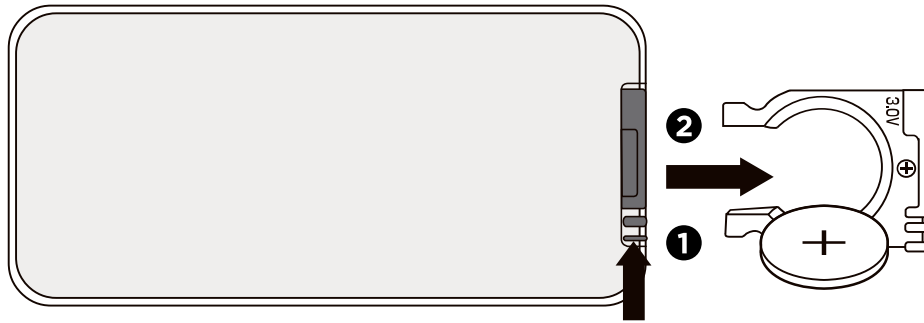




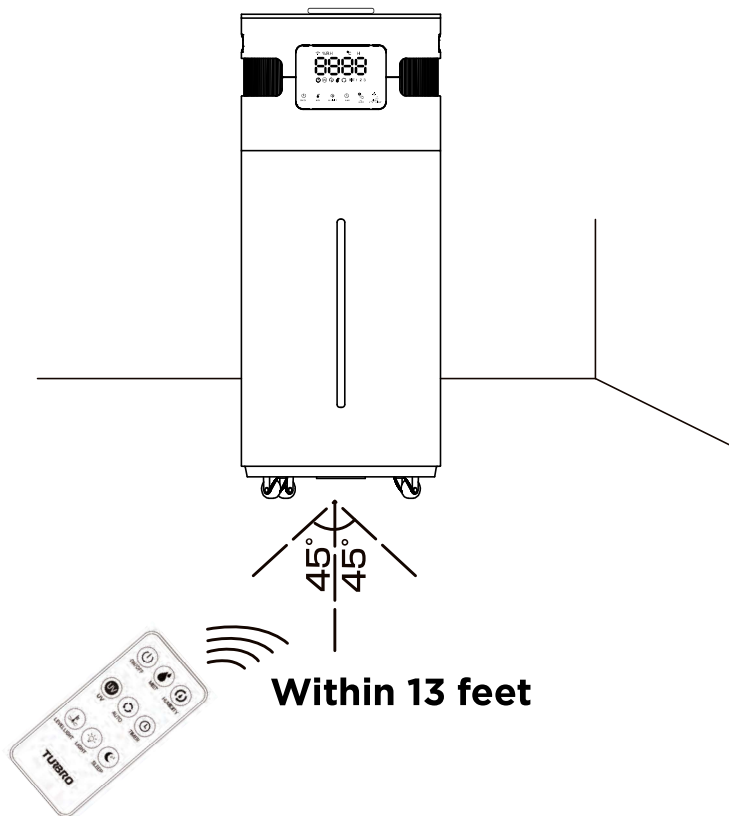
## REMOTE CONTROL

The battery is included in the remote control.

1. Replace the battery: Press **1** and pull out the battery ring. Put a lithium battery CR2025+ on the top.



2. Operation: Use the remote control within 13 feet of the humidifier.



# USING YOUR HUMIDIFIER

## PANEL



ON/OFF

Touch this button to turn on the machine. The LED display shows the current humidity and temperature (the display switches every minute).



**Note:** This humidifier has power-off memory function. The present settings will be saved and the preset operation will resume when the power is on again.

**Caution:** When the atmosphere lamp lights up, the pump starts to draw water from the tank up to the atomizer. It takes 2.5 minutes to draw up water. During this time, no functions can be operated. After that, the machine will start to work under the default setting. (The machine uses level 2 by default. )



MIST

Touch this button to select the mist spray level from 1 to 3.



HUMIDITY

The humidity setting range is between 45-95% in increments of 5%. Press the humidity button until the desired humidity is reached. It will blink for 3 seconds and then set at that humidity level.



**Caution:** This humidifier will automatically stop spraying mist when the surrounding humidity reaches the set value. If the surrounding humidity is lower than the set value, the machine will resume working.



TIMER

The timer can be set for 1-12 hours in increments of 1 hour. The humidifier will turn off automatically when the time reaches the set value.



**Caution:** The timer function can not be set up when the machine is lacking water.

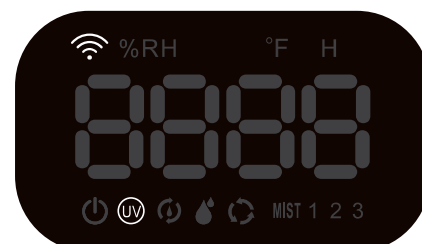


Long press this button on the panel for 3 seconds or press the sleep button on the remote to enter sleep mode. The display and atmosphere light will be off. Press any button to wake the panel.



Touch the UV button to turn on/off the sterilization feature.

**Caution:** Do not open the cover if the UV lamp is on.



## UV Lamp Sterilization



UV-C LED Light (12V DC) | Wavelength: 240nm  
Rated Power: 1.5W

The LED UV-C light is rated at 8000 hours.

- ❶ This function will not produce toxic or harmful by-products, and will not affect the water quality.
- ❷ The UV lamp has high efficiency in removing harmful bacteria.
- ❸ The disinfection effect is influenced by water temperature (Ideal water temperature is 59-77°F).
- ❹ Low power consumption.

### Precautions for use

This machine contains a UV device. Failure to use the device or damage to the UV lamp cover may cause hazardous UV-C radiation escape. The UV-C radiation can cause damage to the eyes and skin even at very small amounts.

- ❶ It is forbidden to open the tank when using UV exposure, so as not to harm the eyes and skin of people or animals.
- ❷ The turbidity and suspended solids in water have a large effect on the UV sterilization, which will affect UV light effectiveness and the sterilization effect. To prevent reducing the disinfection effect, please clean the sink and replace clean water regularly.
- ❸ Be sure the UV light cover is intact before using the device.
- ❹ If the UV lamp is damaged, stop using the device. Contact our customer service or a professional to repair it before continuing use.
- ❺ Be careful to prevent damage to the UV lamp when cleaning or using the machine.



AUTO

Press this button on the panel for 3 seconds or press the auto button on the remote to enter the auto mode. This mode will adjust the mist spray level automatically according to the ambient humidity, and the brightness of the display will reduce by 50%.



**Caution:** Press any key beside on/off to exit this mode.

**In this mode:**

Ambient humidity	Mist spray level
Less than 40%RH	Level 3
41-60%RH	Level 2
61-70%RH	Level 1
Over 70% RH	Stop working automatically



ATMOSPHERE  
LIGHT

Touch this button to turn on/off the atmosphere lamp.  
Atmosphere lamp settings: cycle, red, yellow, blue, pink, green, white, and off.



WATER LEVE  
LIGHT

Press this button on the panel for 3 seconds or press the water level light button on the remote to turn on/off the water level indicator light.



Low Water

When the water level is too low, it will make a 5 seconds indication sound. The water shortage icon in the display will light up red and the machine will turn off automatically. All selected functions will turn off together. Please unplug the power plug and refill the water tank.



**Caution:** When the water in the tank is not enough to be drawn up, the pump will spin, and make noise for around 3-5 seconds. At this time it is best to turn off the unit and refill the water again.

# CONNECTION

## Entering the Wi-Fi connection mode

Preparation before connecting preparation:

Make sure your Wi-Fi router supports 2.4GHz (NOT 5GHz) and 802.11b/g/n bands.

**Note:** Most 5GHz routers can also be set to 2.4GHz band or dual band.

Make sure the Wi-Fi name and password are correct.

A smartphone or tablet supporting a 2.4GHz network.

Download the App named AIRIA from the App Store(iOS devices) or Google Play (Android devices).



AIRIA



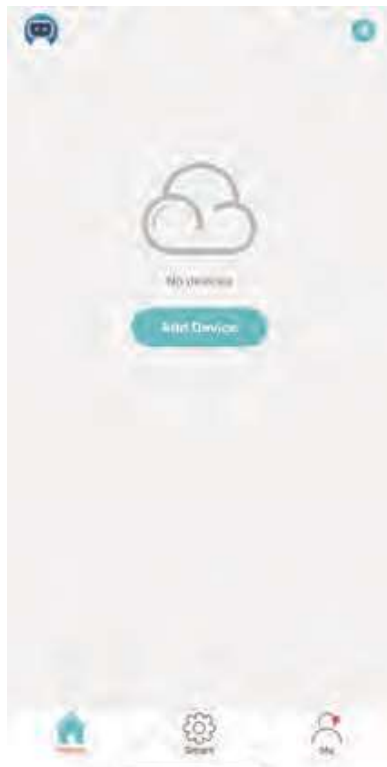
## Step1

Long press the  on the control panel, and the  on the screen will blink quickly.



## Step2

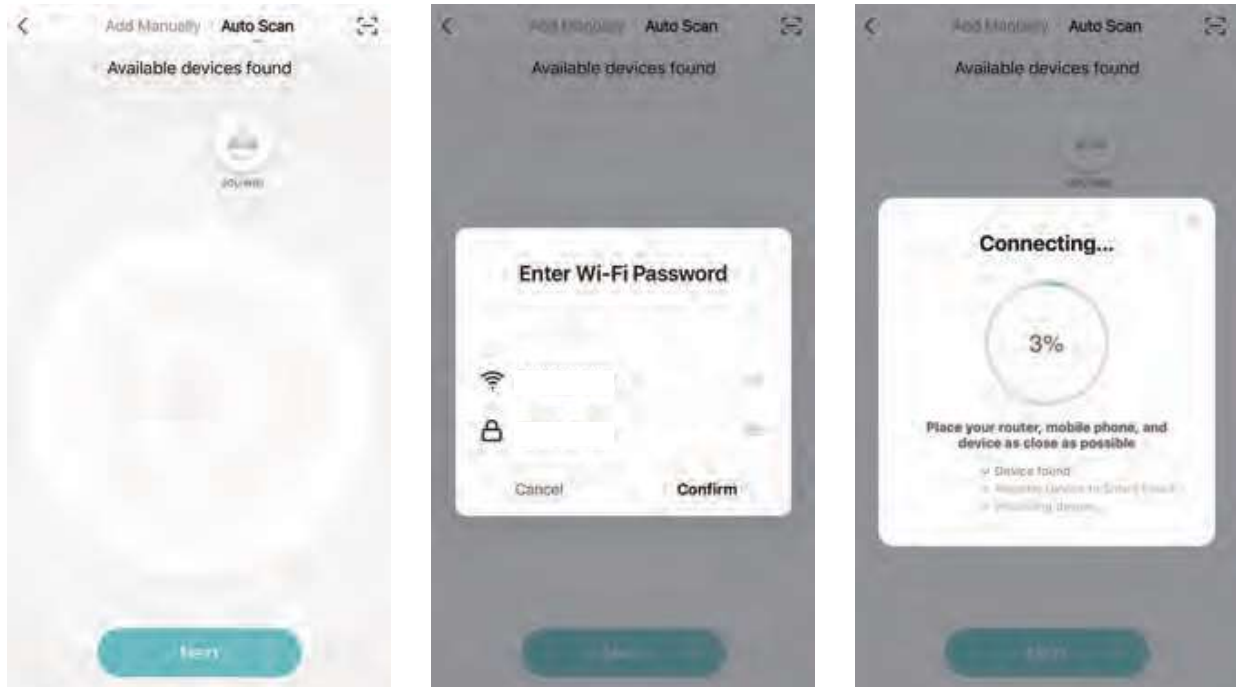
Connect your phone to the 2.4 GHz network your humidifier will use. Open AIRIA and tap the “+” icon in the top right corner. It will appear an added page, click “Go to add”.



### Step3

Go to the next step.

Enter the password of your Wi-Fi network when prompted (same Wi-Fi network on which your smartphone is connected) and then click confirm.



**Important note:** The humidifier must be connected to a 2.4 GHz Wi-Fi network. If your router (internet box) broadcasts 2 Wi-Fi bands (2.4GHz and 5GHz), consult your router user manual to learn how to select the 2.4 GHz Wi-Fi band.

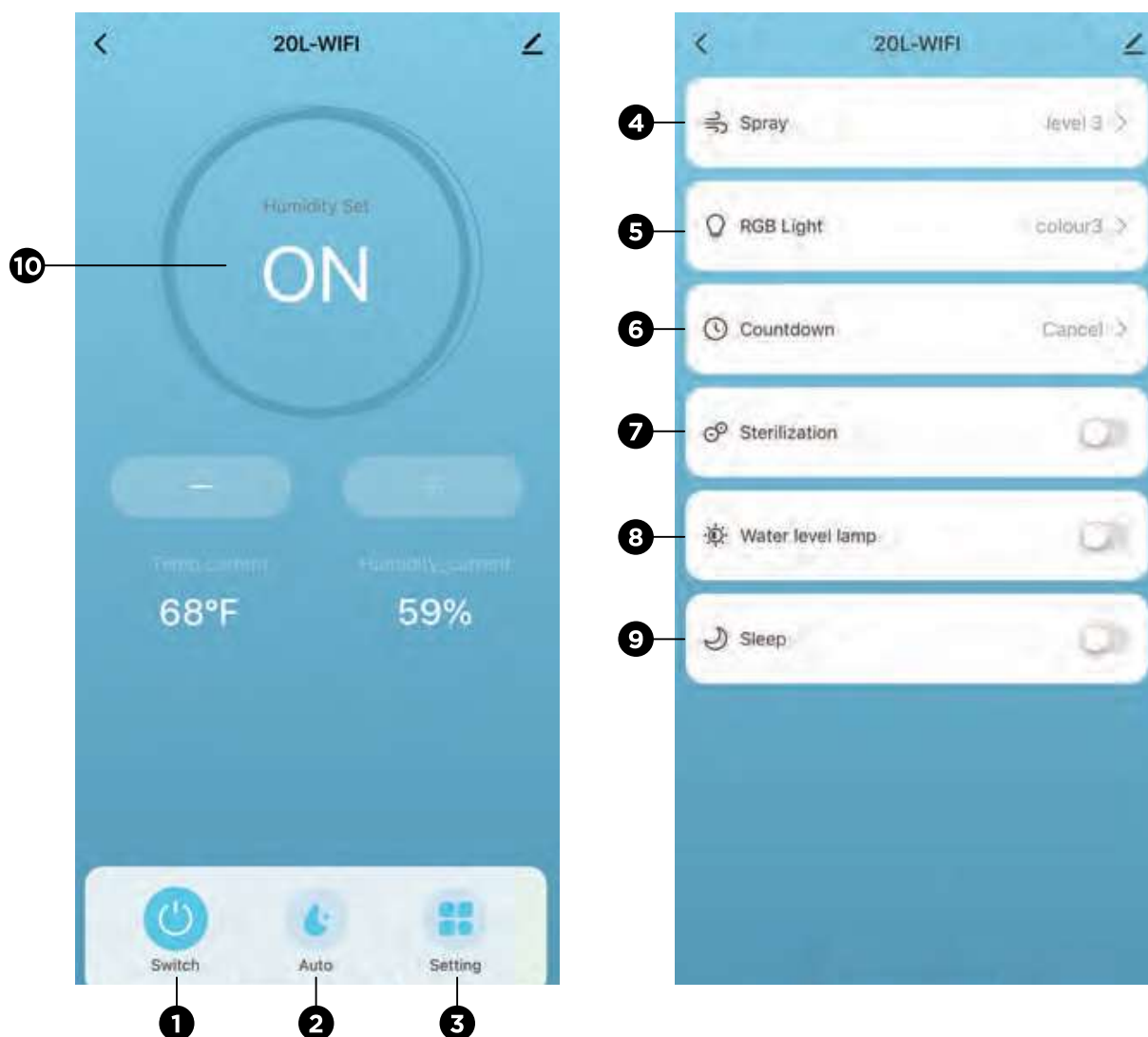
### Step4

Your device is now connected successfully. You can find the humidifier in the device list.



# CONTROL

## APP

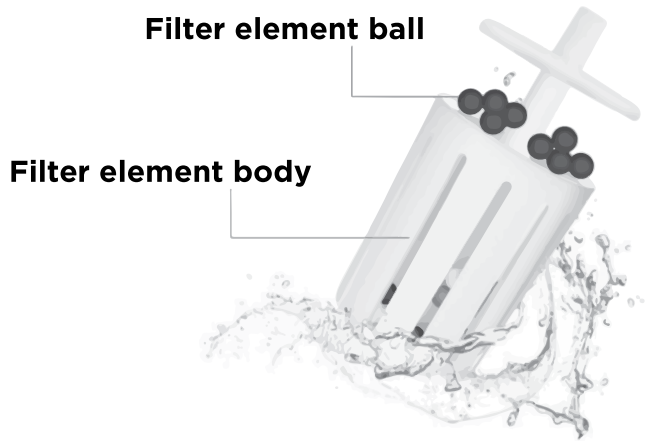


- |   |                                      |                        |
|---|--------------------------------------|------------------------|
| <b>1</b> On/Off   | <b>2</b> Auto mode                   | <b>3</b> Other setting |
| <b>4</b> Mist spray level   | <b>5</b> Atmosphere light            | <b>6</b> Time setting  |
| <b>7</b> UV light   | <b>8</b> Water level indicator light | <b>9</b> Sleep mode    |
| <b>10</b> In the "ON" mode, the humidifier will constant to humidify, the app will display as "ON". |                                      |                        |



## Filter Impurities in Water

The filter ball is a mineral stone, which improves the water quality, increases water activity, and adjusts the pH of water. This water filter is recommended to be replaced every 6 months.



## MAINTENANCE AND CLEANING

- Before cleaning, please be sure the machine is powered off and unplugged.
- Clean all the parts with a soft cloth. Never use any hard objects or abrasives to avoid any damage.
- Change the water in the tank and the sink every day to prevent bacterial growth.
- Do not use chemical detergent for cleaning.
- Keep the machine dry and tidy when not in use for a long time.
- The water filter is suggested to be changed after 6 months of use.

### ATTENTION:

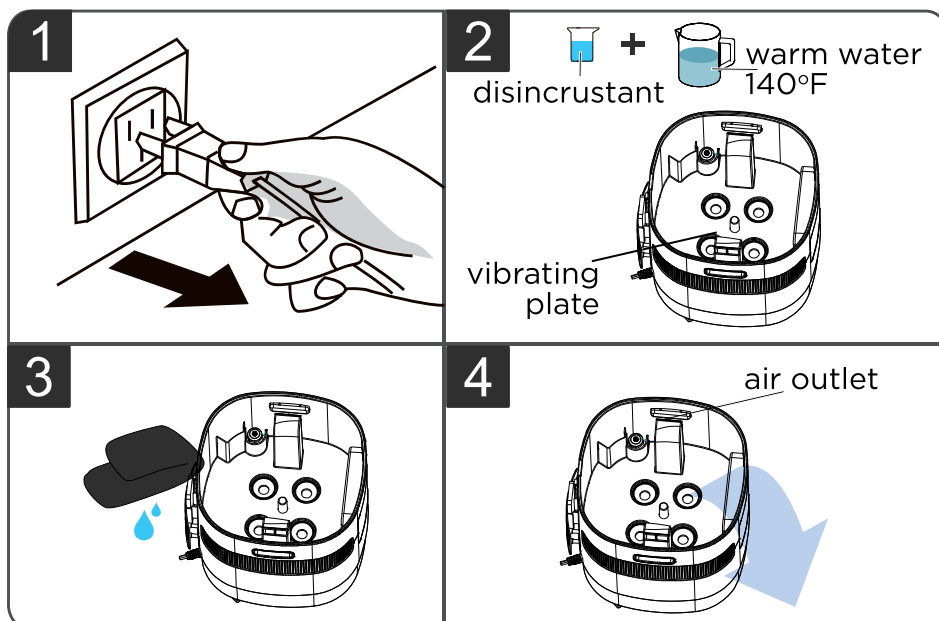
- This machine requires pure water below 113°F only, and uses it at room temperature between 41 to 104°F.
- When the room temperature is lower than 32°F, please pour out the water in the water tank and the sink to avoid freezing and damaging the machine.
- Make sure the water level is not over the Max line in the tank.
- If this unit is not in use for a long time (more than 24 hours), please pour out the water in the water tank and the sink to prevent mold or impurities from harming your health.

- Do not put essential oil into the main body/water tank, which may cause water leakage deformation or damage.
- If accidents happen, such as the machine falling down, or water going inside the unit, please unplug the machine and let it dry, then contact our after-sale service via **support@turbro.com** or call at **(323) 438-3334**.
- This machine is for indoor use only. This machine is not suggested to use on the wooden floor in case of any damage by moisture.
- The floor in front or surrounding can become slippery. Take extra caution if you have wooden floors or carpets susceptible to mold.

## Descaling

After long-term use, there will be a scale deposit on the mechanical sink and vibrating piece. The scale will reduce the atomization effect. Therefore, it is recommended to clean the scale in the sink and the vibration piece every week.

1. Before cleaning, please make sure the machine is powered off and unplugged.
2. Pour a scale-removing liquid (e.g. white vinegar) into the water tank, then add warm water of about 140°F. Let the liquid completely dissolve and soaked for 5-10 minutes.
3. Clean the dirt on the wall of the sink and the vibrating plate with a soft bristle brush or a clean soft cloth.
4. Pour out the water. Be careful to prevent water from entering the base from the air outlet, which may cause the circuit board to short-circuit and damage.



# TROUBLESHOOTING

Fault Reasons and Solutions		
Issues	Analysis	Troubleshooting method
<b>No power</b>	Power is not connected	Check the power connection
<b>The spray of water has an odor</b>	The new machine is closed tightly	Open the water tank and leave it for 12 hours before use
	The water in the water tank has been inside for too long time	Replace with clean water
<b>White dust appears around the humidifier</b>	The water contains high mineral content	Use purified or distilled water to fill the humidifier
<b>A small amount of fog</b>	The atomizing sheet has a scale	Clean the atomizing sheet
	If the water is dirty or has been stored for too long time	Replace with clean water
	Water temperature is too low	Add a small amount of warm water
	The fog amount is set at the minimum gear	Reset the fog amount
<b>Abnormal noise</b>	Water shortage in the tank, noise from the pump is spinning	Add water to the tank
	Placed on uneven ground	Place it on a solid and stable surface
<b>Water leakage</b>	Too much water	Make sure the water level is below the Max line.
	Placed on uneven ground	Place it on a flat and level surface
<b>Remark:</b> If the fault cannot be eliminated after the above, please contact our support team for assistance.		

## FCC STATEMENT

This device complies with Part 15 of the FCC Rules. Operation is subject to the following two conditions:

1. This device may not cause harmful interference, and
2. This device must accept any interference received, including interference that may cause undesired operation.

Any changes or modifications not expressly approved by the party responsible for compliance could void the user's authority to operate this equipment.

This equipment has been tested and found to comply with the limits for a Class B digital device, pursuant to Part 15 of the FCC Rules. These limits are designed to provide reasonable protection against harmful interference in a residential installation. This equipment generates, uses and can radiate radio frequency energy and, if not installed and used in accordance with the instructions, may cause harmful interference to radio communications.

However, there is no guarantee that interference will not occur in a particular installation. If this equipment does cause harmful interference to radio or television reception, which can be determined by turning the equipment off and on, the user is encouraged to try to correct the interference by one of the following measures:

- Reorient or relocate the receiving antenna.
- Connect the equipment into an outlet on a circuit different from that to which the receiver is connected.
- Increase the separation between the equipment and receiver.
- Consult the dealer or an experienced radio/TV technician for help.

# FCC RADIATION EXPOSURE STATEMENT

This equipment complies with FCC radiation exposure limits set forth for an uncontrolled environment. End users must follow the specific operating instructions for satisfying RF exposure compliance. To maintain compliance with FCC RF exposure compliance requirements, please follow operation instructions as documented in this manual. This transmitter must not be co located or operating in conjunction with any other antenna or transmitter. This equipment should be installed and operated with a minimum distance of 20 cm between the radiator and your body. The availability of some specific channels and/or operational frequency bands are country dependent and are firmware programmed at the factory to match the intended destination. The firmware setting is not accessible by the end user.

## ATTRIBUTIONS

Apple App Store is a trademark of Apple Inc.

Google, Android, and Google Play are trademarks of Google LLC.

Wi-Fi® is a registered trademark of Wi-Fi Alliance®.

Amazon, Alexa and all related logos are trademarks of Amazon.com, Inc. or its affiliates.

iOS is a registered trademark of Cisco Systems, Inc. and/or its affiliates in the United States and certain other countries.

The Bluetooth® word mark and logos are registered trademarks owned by Bluetooth SIG, Inc.

and any use of such marks by Arovast Corporation is under license.

# WARRANTY & CUSTOMER SUPPORT

## WARRANTY

TURBRO provides a 1-year limited warranty for TURBRO products from the date of purchase, subject to the following conditions and limitations outlined below.

### What is covered?

- This warranty is limited to the repair or replacement of part(s) proved to be defective in material or workmanship, after said defect is confirmed by the manufacturer's inspection.
- The manufacturer may, at its discretion, fully discharge all obligations with respect to this warranty by refunding the wholesale price of the defective part(s).

### What is not covered?

- Damage caused by the owner when attempting to fix or alter the product themselves.
- Damage caused by misuse, abuse, neglect, alterations, or unauthorized repair.
- Natural depreciation.
- Any alteration misuse of the product will nullify this warranty.
- This warranty is non-transferable, which is effective for the original buyer from the authorized seller only.

### How to request warranty services?

To obtain the benefit of this warranty please leave a message online ([www.turbro.com/contact](http://www.turbro.com/contact) ), or send an email to [support@turbro.com](mailto:support@turbro.com).

### What will TURBRO do?

- Repair the item.
- Replace the item if not repairable.
- Refund the item under certain circumstances.

## CUSTOMER SUPPORT

**We are here to help anytime!**

Any problems, write to us via **support@turbro.com**. We will get back to you within 1 business day.

---

# TURBRO

www.turbro.com




# **TURBRO**



© Katmai Technology Limited

 [support@turbro.com](mailto:support@turbro.com)

 [www.turbro.com](http://www.turbro.com)

 [\(323\) 438-3334](tel:(323)438-3334)