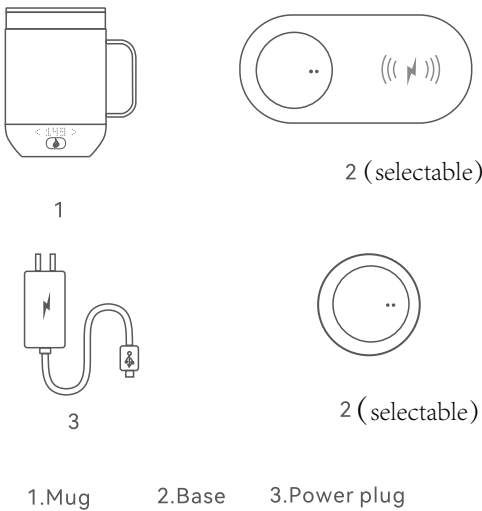


Instructions



Temperature Control Heated Coffee Mug

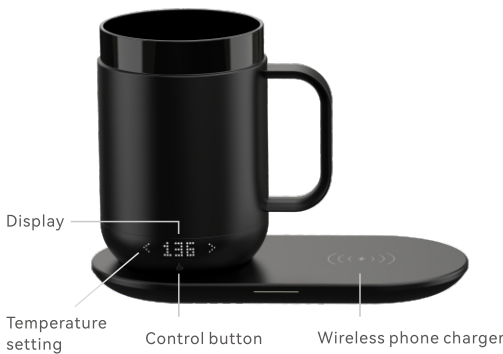
Product



The figure is for reference only, please refer to the real object

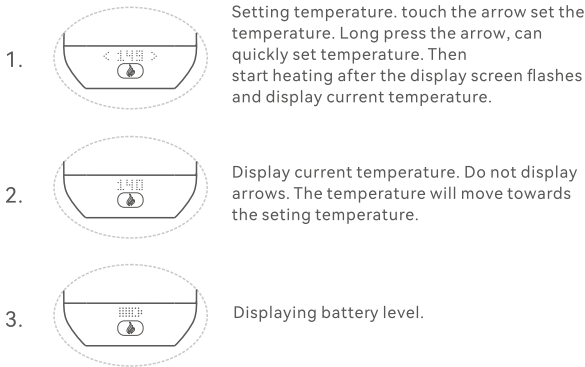
Function introduction

Choose 35-65 degrees Celsius to maintain a constant temperature
1. Can be placed on the base for charging while maintaining a constant temperature.
2. Built-in battery, can maintain constant temperature on the go.
*Only use the attached power plug to power up the base can it work properly! Do not use other power supplies!

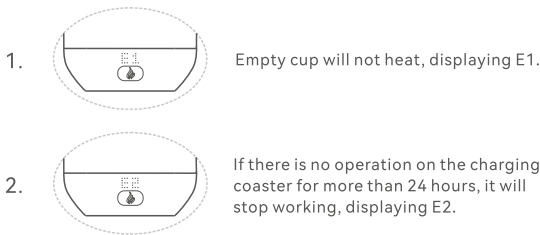


Control

Pressing the Control button will switch between setting temperature, current temperature, and battery level.



Overheat protection

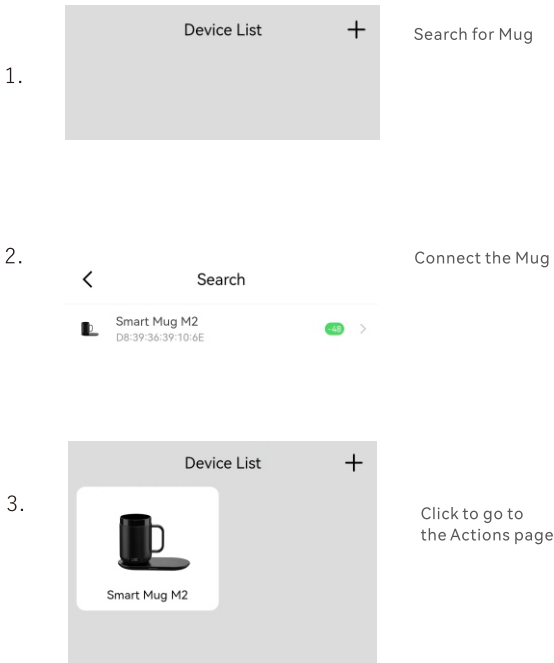


APP download

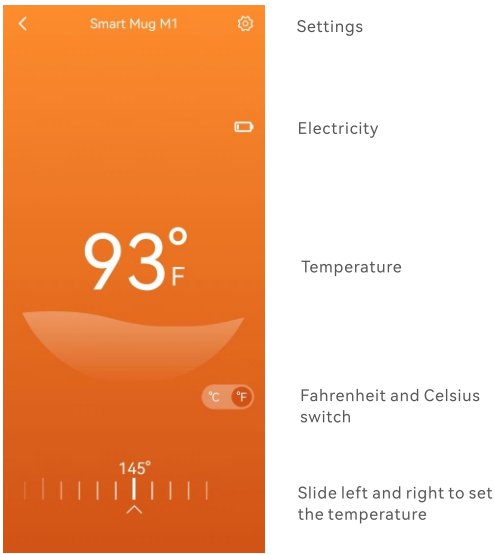
1.Android devices scan the QR code below to download the APP.
2.iOS devices search for "joozan" download in the APP Store.
Connect to the APP, you can set and view the temperature in the APP.



APP Connect



APP control



Warning

- Built-in electronic equipment, do not soak in water, do not expose to the sun for a long time.
- Do not insert or unplug the plug with wet hands to avoid electric shock.
- Do not move or shake the product during work.
- Don't get close to the fire source, carry it out and make sure to tighten the cover.
- It is forbidden to use microwave oven to heat products.
- It is forbidden to put it into the refrigerator to avoid short circuit caused by water vapor entering.
- Do not use dishwashers, dish dryers and other machines to clean products.

Standard parameters

Product Name: Temperature Control Heated Coffee Mug
Product model: M2
Capacity: 16oz (475mL)
Input voltage: 12V 4A
Battery capacity:4000mAh
Material Science:18/8 stainless steel + ceramic glaze

FCC statement

This device complies with part 15 of the FCC Rules. Operation is subject to the following two conditions:

- (1) This device may not cause harmful interference,
- (2) this device must accept any interference received, including interference that cause undesired operation.

Any changes or modifications not expressly approved by the party responsible for compliance could void the user's authority to operate the equipment.

This equipment has been tested and found to comply with the limits for a Class B digital device, pursuant to part 15 of the FCC Rules. These limits are designed to provide reasonable protection against harmful interference in a residential installation. This equipment generates, uses and can radiate radio frequency energy and, if not installed and used in accordance with the instructions, may cause harmful interference to radio communications. However, there is no guarantee that interference will not occur in a particular installation. If this equipment does cause harmful interference to radio or television reception, which can be determined by turning the equipment off and on, the user is encouraged to try to correct the interference by one or more of the following measures:

- Reorient or relocate the receiving antenna.
- Increase the separation between the equipment and receiver.
- Connect the equipment into an outlet on a circuit different from that to which the receiver is connected.
- Consult the dealer or an experienced radio/TV technician for help.

FCC Radiation Exposure Statement

This equipment complies with FCC radiation exposure limits set forth for an uncontrolled environment.