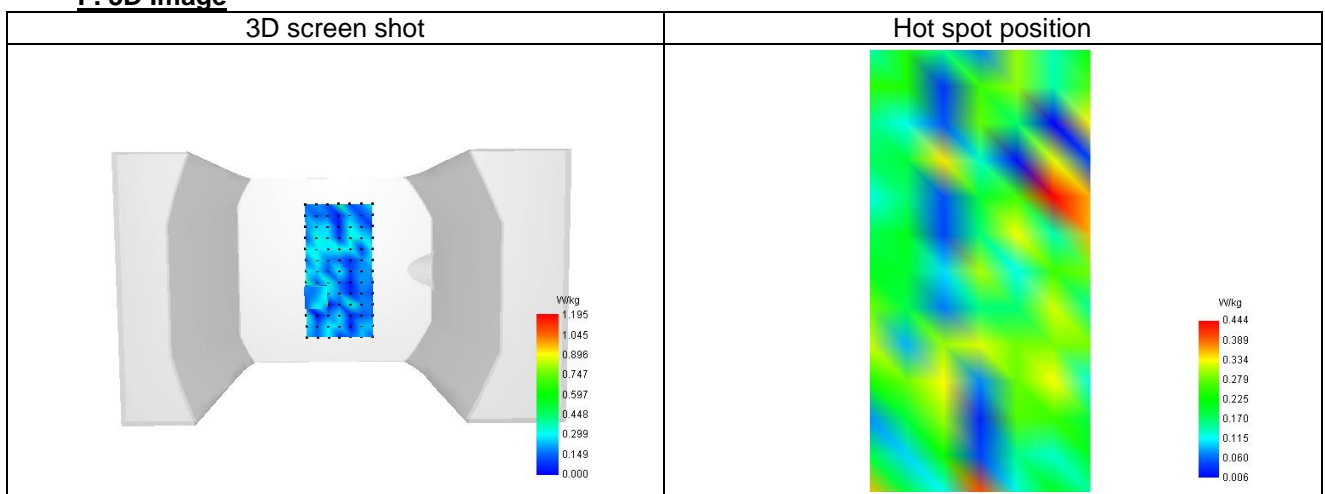


### F. 3D Image



**Plot 3**

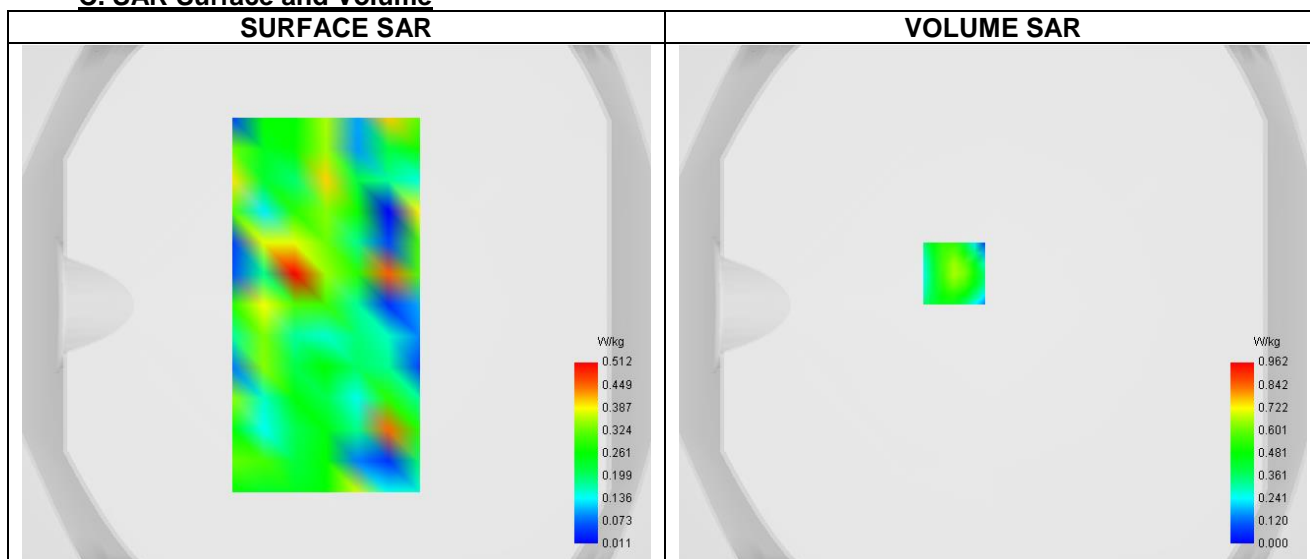
Date of measurement: 9/9/2024

**A. Experimental conditions.**

Probe	SN 26/23 EPG0420
ConvF	1.15
Area Scan	surf_sam_plan.txt
Zoom Scan	7x7x12,dx=4mm dy=4mm dz=2.0mm
Phantom	Validation plane
Device Position	Body
Band	5800
Signal	--

**B. Permittivity**

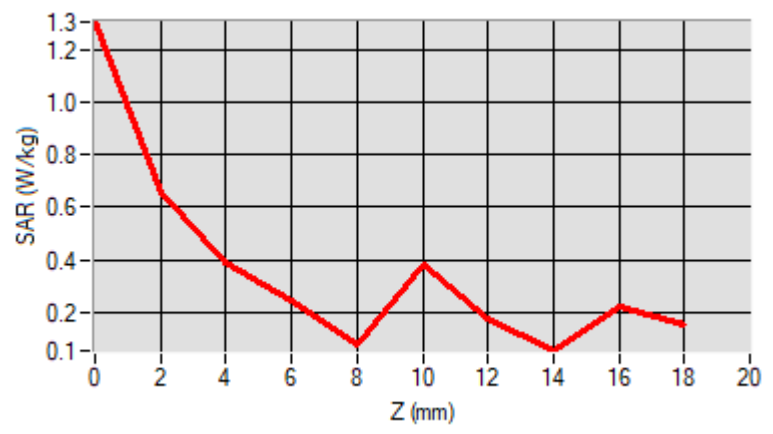
Frequency (MHz)	5785.000
Relative permittivity (real part)	36.564
Relative permittivity (imaginary part)	16.355
Conductivity (S/m)	5.255

**C. SAR Surface and Volume**

**D. SAR 1g & 10g**

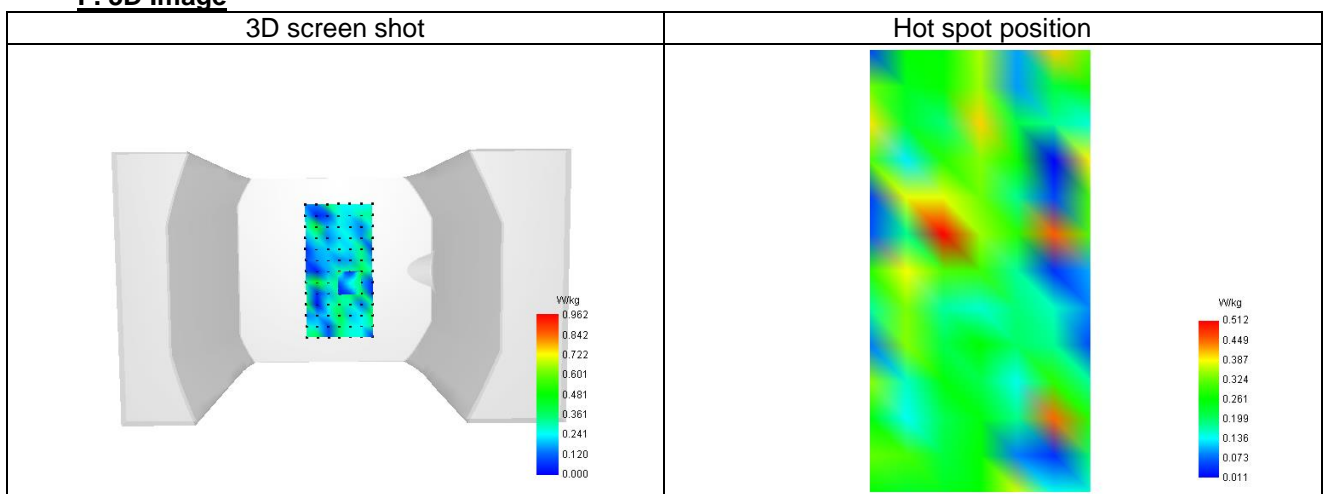
SAR 10g (W/Kg)	0.141
SAR 1g (W/Kg)	0.348
Variation (%)	-4.550
Horizontal validation criteria: minimum distance (mm)	0.000000
Vertical validation criteria: SAR ratio M2/M1 (%)	0.000000

**E. Z Axis Scan**

Z (mm)	0.00	2.00	4.00	6.00	8.00	10.00	12.00	14.00	16.00
SAR (W/Kg)	1.306	0.659	0.392	0.242	0.076	0.385	0.177	0.054	0.222



### F. 3D Image



**Plot 4**

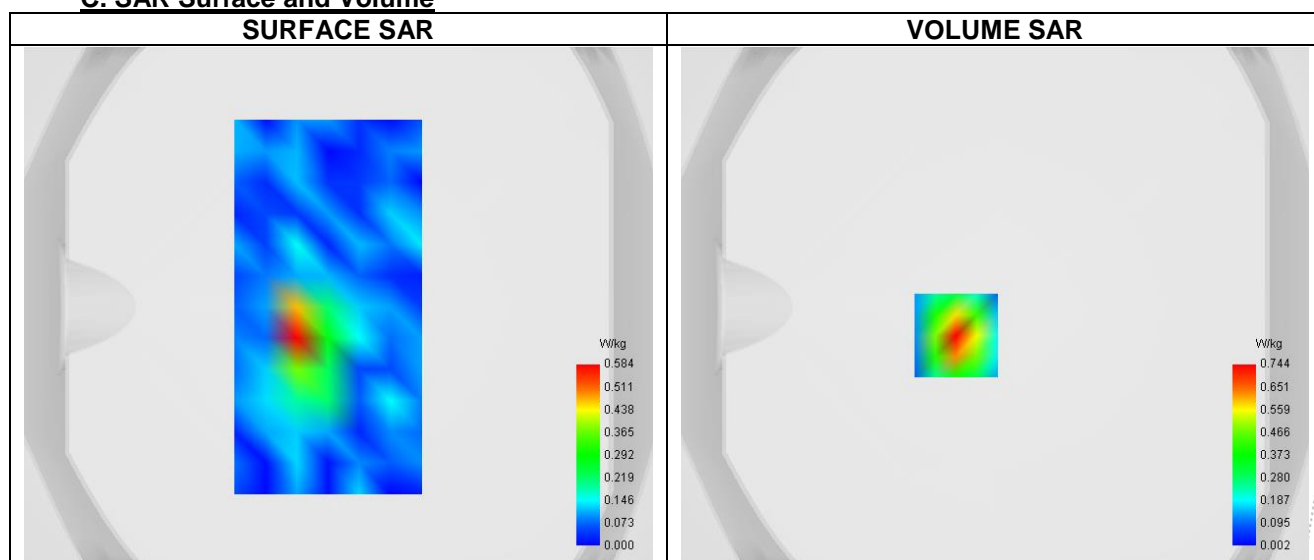
Date of measurement: 11/9/2024

**A. Experimental conditions.**

Probe	SN 26/23 EPGO420
ConvF	0.81
Area Scan	surf_sam_plan.txt
Zoom Scan	5x5x7,dx=8mm dy=8mm dz=5.0mm
Phantom	Validation plane
Device Position	Body
Band	GPRS850
Signal	TDMA (GPRS)
Modulation	GMSK (CS-1)
TX-slots	2

**B. Permittivity**

Frequency (MHz)	848.800
Relative permittivity (real part)	40.611
Relative permittivity (imaginary part)	19.400
Conductivity (S/m)	0.924

**C. SAR Surface and Volume**


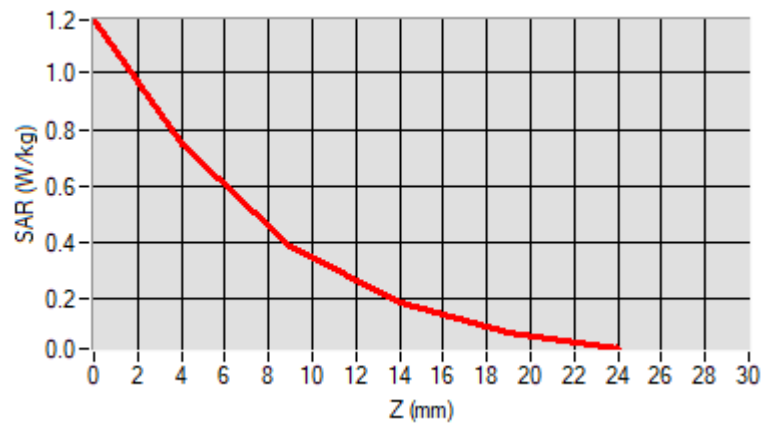
Maximum location: X=-15.00, Y=-11.00 ; SAR Peak: 1.21 W/kg

**D. SAR 1g & 10g**

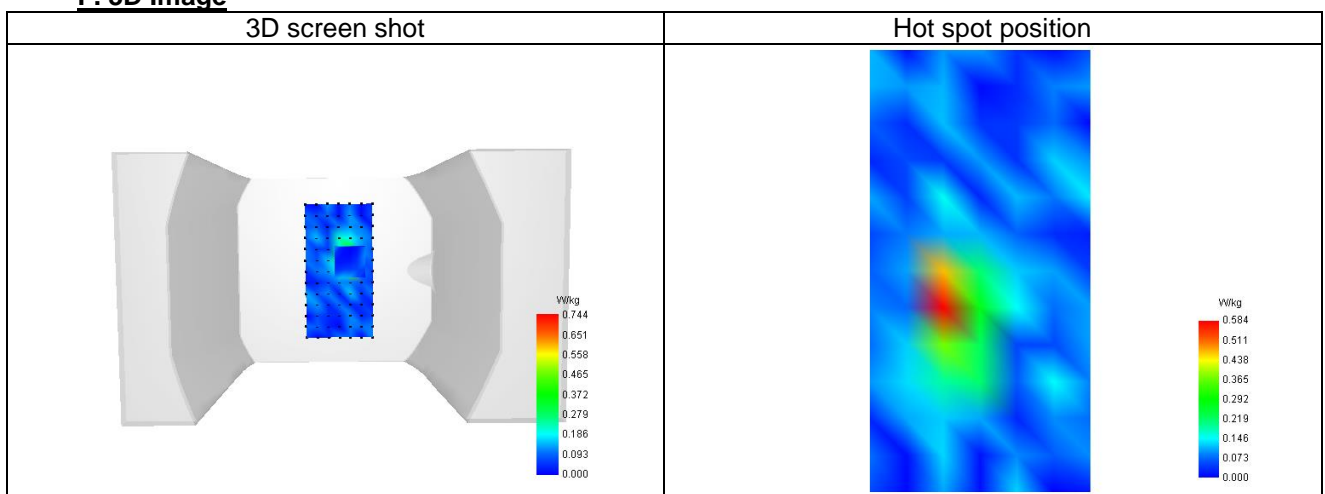
SAR 10g (W/Kg)	0.313
SAR 1g (W/Kg)	0.674
Variation (%)	-4.130
Horizontal validation criteria: minimum distance (mm)	0.000000
Vertical validation criteria: SAR ratio M2/M1 (%)	0.000000

**E. Z Axis Scan**

Z (mm)	0.00	4.00	9.00	14.00	19.00
SAR (W/Kg)	1.188	0.744	0.389	0.187	0.080



### F. 3D Image



**Plot 5**

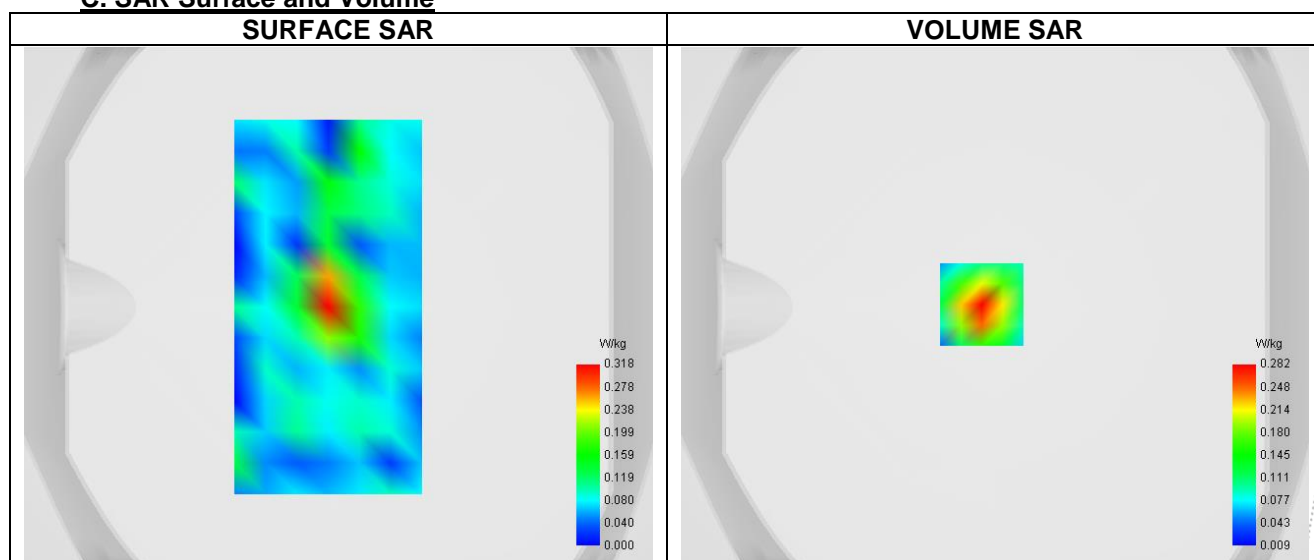
Date of measurement: 3/9/2024

**A. Experimental conditions.**

Probe	SN 26/23 EPGO420
ConvF	1.04
Area Scan	surf_sam_plan.txt
Zoom Scan	5x5x7,dx=8mm dy=8mm dz=5.0mm
Phantom	Validation plane
Device Position	Body
Band	GPRS1900
Signal	TDMA (GPRS)
Modulation	GMSK (CS-1)
TX-slots	2

**B. Permittivity**

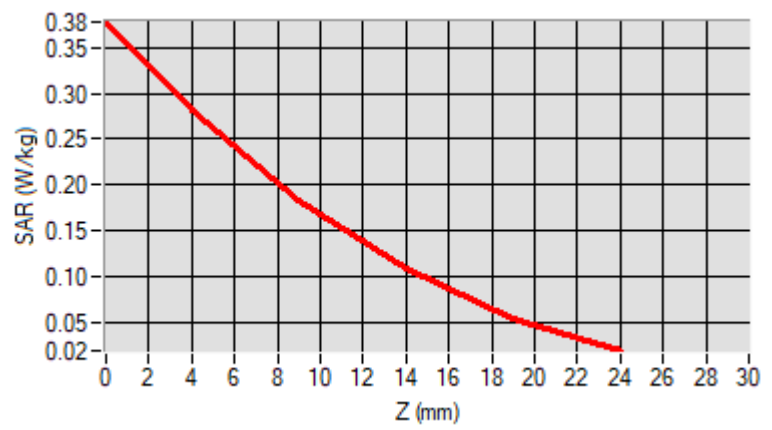
Frequency (MHz)	1880.000
Relative permittivity (real part)	39.854
Relative permittivity (imaginary part)	13.408
Conductivity (S/m)	1.451

**C. SAR Surface and Volume**

**D. SAR 1g & 10g**

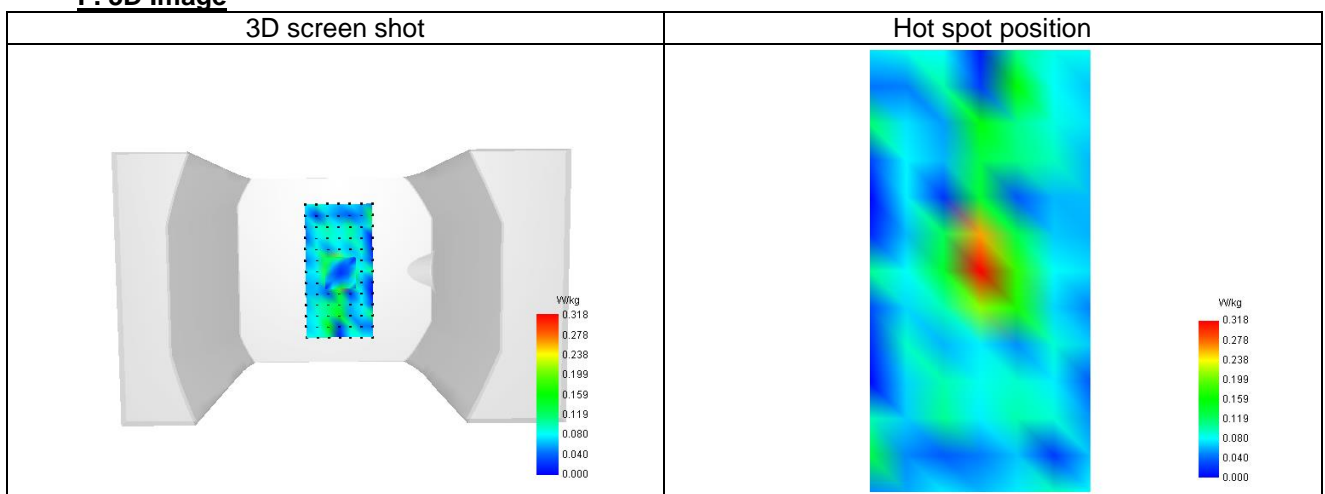
SAR 10g (W/Kg)	0.149
SAR 1g (W/Kg)	0.261
Variation (%)	-3.200
Horizontal validation criteria: minimum distance (mm)	0.000000
Vertical validation criteria: SAR ratio M2/M1 (%)	0.000000

**E. Z Axis Scan**

Z (mm)	0.00	4.00	9.00	14.00	19.00
SAR (W/Kg)	0.378	0.282	0.184	0.108	0.054



### F. 3D Image



**Plot 6**

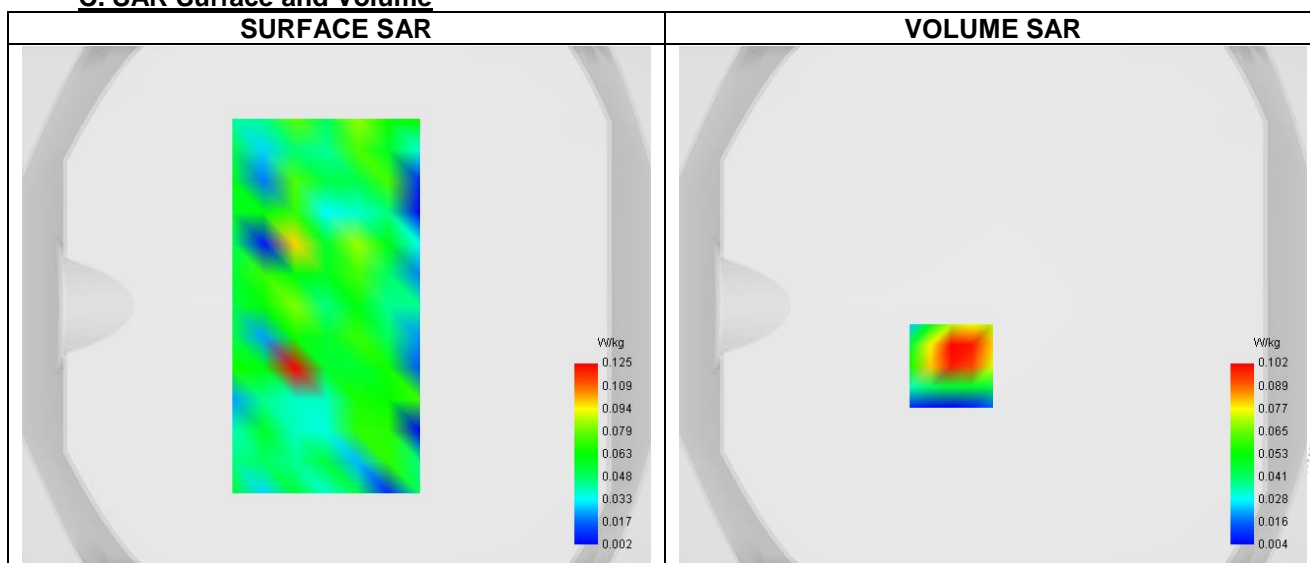
Date of measurement: 11/9/2024

**A. Experimental conditions.**

Probe	SN 26/23 EPGO420
ConvF	0.81
Area Scan	surf_sam_plan.txt
Zoom Scan	5x5x7,dx=8mm dy=8mm dz=5.0mm
Phantom	Validation plane
Device Position	Body
Band	LTE band 5
Signal	LTE FDD
Cell Bandwidth	10 Mhz
Modulation	SC-OFDM - QPSK
RB offset	5
RB size	20

**B. Permittivity**

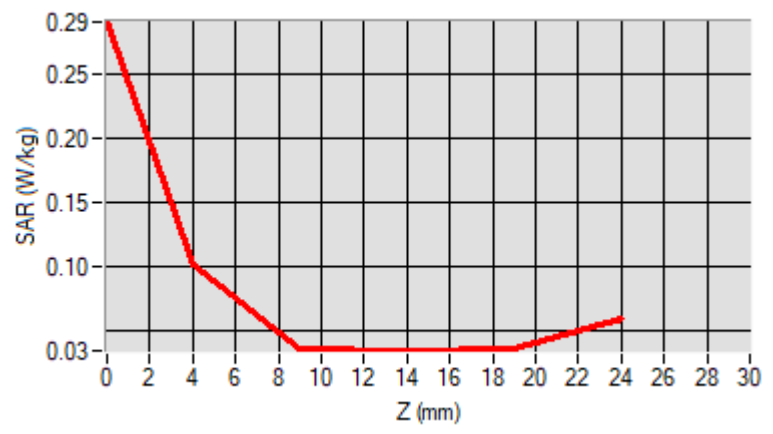
Frequency (MHz)	844.000
Relative permittivity (real part)	40.611
Relative permittivity (imaginary part)	19.407
Conductivity (S/m)	0.924

**C. SAR Surface and Volume**

**D. SAR 1g & 10g**

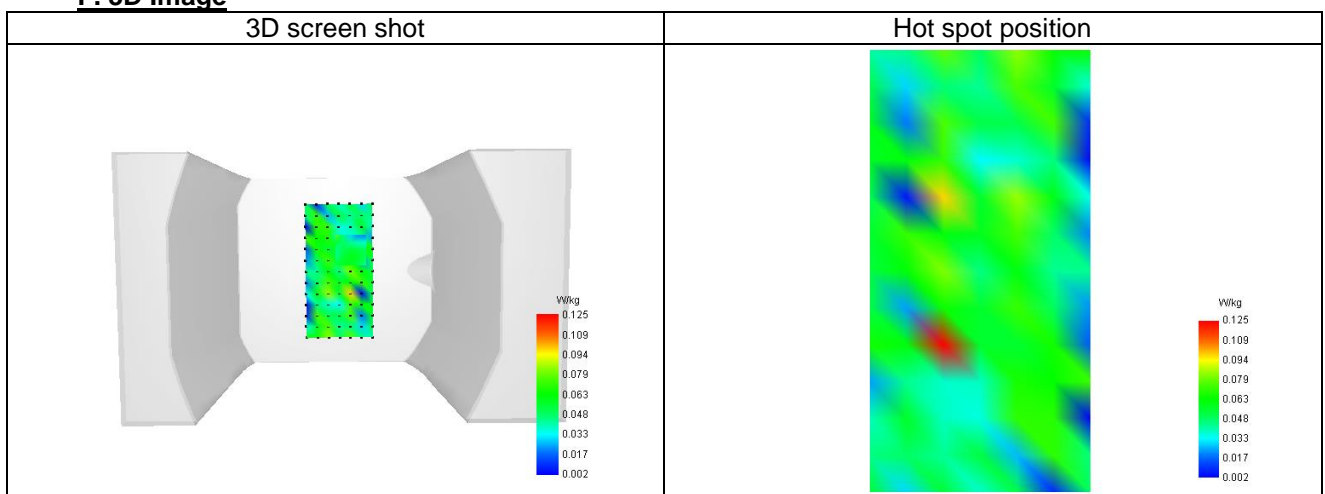
SAR 10g (W/Kg)	0.058
SAR 1g (W/Kg)	0.114
Variation (%)	2.670
Horizontal validation criteria: minimum distance (mm)	0.000000
Vertical validation criteria: SAR ratio M2/M1 (%)	0.000000

**E. Z Axis Scan**

Z (mm)	0.00	4.00	9.00	14.00	19.00
SAR (W/Kg)	0.290	0.101	0.036	0.034	0.036



### F. 3D Image



**Plot 7**

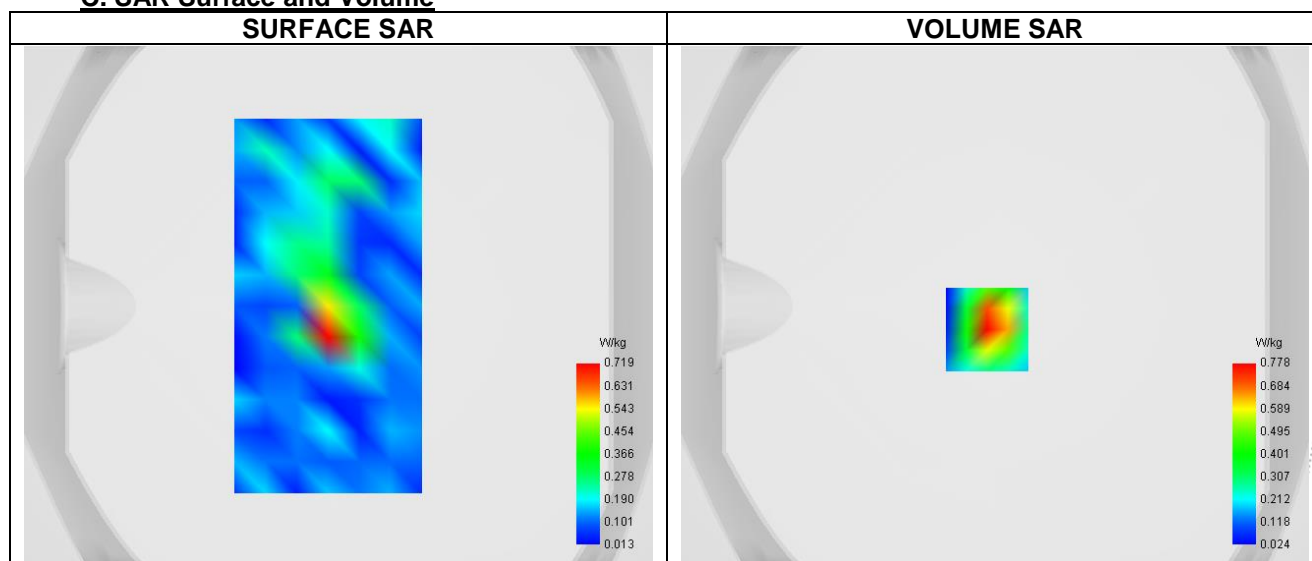
Date of measurement: 9/9/2024

**A. Experimental conditions.**

Probe	SN 26/23 EPGO420
ConvF	1.03
Area Scan	surf_sam_plan.txt
Zoom Scan	5x5x7,dx=8mm dy=8mm dz=5.0mm
Phantom	Validation plane
Device Position	Body
Band	LTE band 41
Signal	LTE TDD
Cell Bandwidth	20 Mhz
Modulation	SC-OFDM - QPSK
RB offset	5
RB size	20

**B. Permittivity**

Frequency (MHz)	2593.000
Relative permittivity (real part)	39.018
Relative permittivity (imaginary part)	13.539
Conductivity (S/m)	1.946

**C. SAR Surface and Volume**


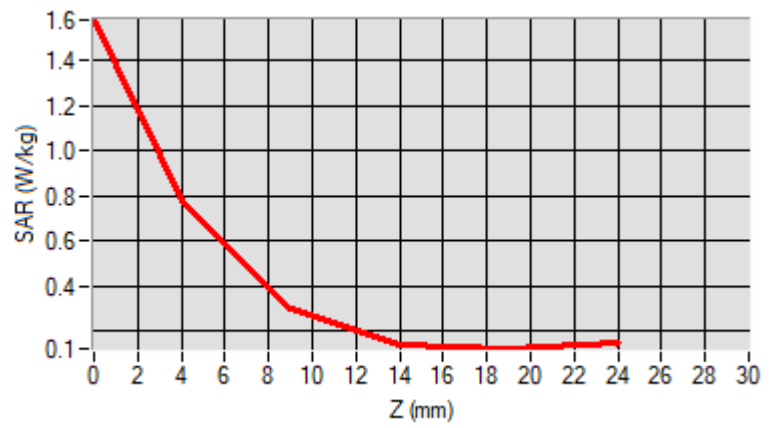
Maximum location: X=-3.00, Y=-9.00 ; SAR Peak: 1.69 W/kg

**D. SAR 1g & 10g**

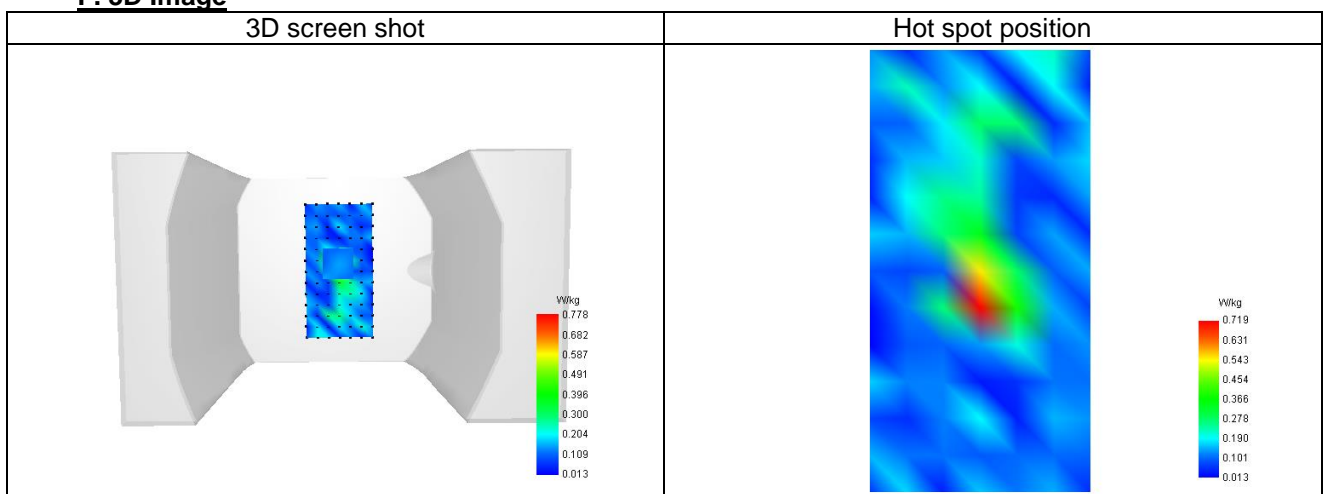
SAR 10g (W/Kg)	0.310
SAR 1g (W/Kg)	0.753
Variation (%)	-0.380
Horizontal validation criteria: minimum distance (mm)	0.000000
Vertical validation criteria: SAR ratio M2/M1 (%)	0.000000

**E. Z Axis Scan**

Z (mm)	0.00	4.00	9.00	14.00	19.00
SAR (W/Kg)	1.578	0.778	0.300	0.142	0.120

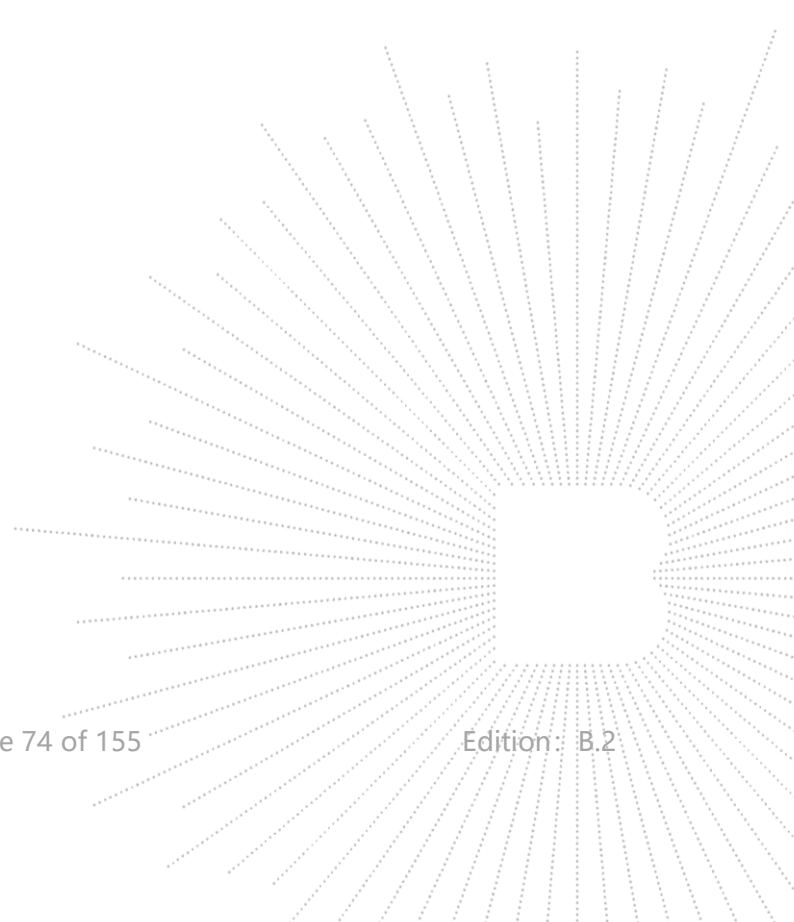


### F. 3D Image



## 16 CALIBRATION CERTIFICATES

**Probe-EPGO420 Calibration Certificate**  
**SID8350Dipole Calibration Ceriticate**  
**SID1900Dipole Calibration Ceriticate**  
**SID2450Dipole Calibration Ceriticate**  
**SID2600Dipole Calibration Ceriticate**  
**SID5000Dipole Calibration Ceriticate**



**COMOSAR E-Field Probe Calibration Report**

Ref : ACR.199.1.23.BES.A

**SHENZHEN BCTC TECHNOLOGY CO., LTD.**

**1 ~2/ F, NO. B FACTORY BUILDING, PENGZHOU  
INDUSTRIAL PARK, FUYUAN 1ST ROAD,  
TANGWEI COMMUNITY, FUHAI STREET, BAO'AN  
DISTRICT, SHENZHEN, GUANGDONG, CHINA  
MVG COMOSAR DOSIMETRIC E-FIELD PROBE  
SERIAL NO.: 2623-EPGO-420**

**Calibrated at MVG****Z.I. de la pointe du diable**

**Technopôle Brest Iroise – 295 avenue Alexis de Rochon  
29280 PLOUZANE - FRANCE**

**Calibration date: 7/18/2023**

Accreditations #2-6789  
Scope available on [www.cofrac.fr](http://www.cofrac.fr)

**The use of the Cofrac brand and the accreditation references is prohibited from any reproduction.**

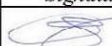


**Summary:**

This document presents the method and results from an accredited COMOSAR Dosimetric E-Field Probe calibration performed at MVG, using the CALIPROBE test bench, for use with a MVG COMOSAR system only. The test results covered by accreditation are traceable to the International System of Units (SI).

Page: 1/11


**COMOSAR E-FIELD PROBE CALIBRATION REPORT**

Ref: ACR.199.1.23.BES.A

	<i>Name</i>	<i>Function</i>	<i>Date</i>	<i>Signature</i>
<i>Prepared by :</i>	Cyrille ONNEE	Measurement Responsible	7/18/2023	
<i>Checked &amp; approved by:</i>	Jérôme Luc	Technical Manager	7/18/2023	
<i>Authorized by:</i>	Yann Toutain	Laboratory Director	7/18/2023	

Yann  
Toutain ID

Signature numérique  
de Yann Toutain ID  
Date : 2023.07.18  
10:38:49 +02'00'

	<i>Customer Name</i>
<i>Distribution :</i>	Shenzhen BCTC Technology Co., Ltd.

<i>Issue</i>	<i>Name</i>	<i>Date</i>	<i>Modifications</i>
A	Cyrille ONNEE	7/18/2023	Initial release

Page: 2/11

**Template\_ACR.DDD.N.YY.MVGB.ISSUE\_COMOSAR\_Probe vL**

This document shall not be reproduced, except in full or in part, without the written approval of MVG. The information contained herein is to be used only for the purpose for which it is submitted and is not to be released in whole or part without written approval of MVG.



## TABLE OF CONTENTS

1	Device Under Test .....	4
2	Product Description .....	4
2.1	General Information .....	4
3	Measurement Method .....	4
3.1	Sensitivity .....	4
3.2	Linearity .....	5
3.3	Isotropy .....	5
3.4	Boundary Effect .....	5
4	Measurement Uncertainty .....	6
5	Calibration Results .....	6
5.1	Calibration in air .....	6
5.2	Calibration in liquid .....	7
6	Verification Results .....	9
7	List of Equipment .....	10



## 1 DEVICE UNDER TEST

Device Under Test	
Device Type	COMOSAR DOSIMETRIC E FIELD PROBE
Manufacturer	MVG
Model	SSE2
Serial Number	2623-EPGO-420
Product Condition (new / used)	New
Frequency Range of Probe	0.15 GHz-7.5GHz
Resistance of Three Dipoles at Connector	Dipole 1: R1=0.228 MΩ Dipole 2: R2=0.238 MΩ Dipole 3: R3=0.230 MΩ

## 2 PRODUCT DESCRIPTION

### 2.1 GENERAL INFORMATION

MVG's COMOSAR E field Probes are built in accordance to the IEC/IEEE 62209-1528 and FCC KDB865664 D01 standards.



**Figure 1 – MVG COMOSAR Dosimetric E field Probe**

Probe Length	330 mm
Length of Individual Dipoles	24.5 mm
Maximum external diameter	8 mm
Probe Tip External Diameter	2.55 mm
Distance between dipoles / probe extremity	12.7 mm

## 3 MEASUREMENT METHOD

The IEC/IEEE 62209-1528 and FCC KDB865664 D01 standards provide recommended practices for the probe calibrations, including the performance characteristics of interest and methods by which to assess their effect. All calibrations / measurements performed meet the fore-mentioned standards.

### 3.1 SENSITIVITY

The sensitivity factors of the three dipoles were determined using a two step calibration method (air and tissue simulating liquid) using waveguides as outlined in the standards for frequency range 600-7500MHz and using the calorimeter cell method (transfer method) as outlined in the standards for frequency 150-450 MHz.



### 3.2 LINEARITY

The evaluation of the linearity was done in free space using the waveguide, performing a power sweep to cover the SAR range 0.01W/kg to 100W/kg.

### 3.3 ISOTROPY

The axial isotropy was evaluated by exposing the probe to a reference wave from a standard dipole with the dipole mounted under the flat phantom in the test configuration suggested for system validations and checks. The probe was rotated along its main axis from 0 to 360 degrees in 15-degree steps. The hemispherical isotropy is determined by inserting the probe in a thin plastic box filled with tissue-equivalent liquid, with the plastic box illuminated with the fields from a half wave dipole. The dipole is rotated about its axis (0°–180°) in 15° increments. At each step the probe is rotated about its axis (0°–360°).

### 3.4 BOUNDARY EFFECT

The boundary effect is defined as the deviation between the SAR measured data and the expected exponential decay in the liquid when the probe is oriented normal to the interface. To evaluate this effect, the liquid filled flat phantom is exposed to fields from either a reference dipole or waveguide. With the probe normal to the phantom surface, the peak spatial average SAR is measured and compared to the analytical value at the surface.

The boundary effect uncertainty can be estimated according to the following uncertainty approximation formula based on linear and exponential extrapolations between the surface and  $d_{be}$  +  $d_{step}$  along lines that are approximately normal to the surface:

$$SAR_{uncertainty} [\%] = \Delta SAR_{be} \frac{(d_{be} + d_{step})^2}{2d_{step}} \frac{(e^{-d_{be}/\delta} - e^{-(d_{be} + d_{step})/\delta})}{\delta/2} \quad \text{for } (d_{be} + d_{step}) < 10 \text{ mm}$$

where

$SAR_{uncertainty}$	is the uncertainty in percent of the probe boundary effect
$d_{be}$	is the distance between the surface and the closest <i>zoom-scan</i> measurement point, in millimetre
$\Delta_{step}$	is the separation distance between the first and second measurement points that are closest to the phantom surface, in millimetre, assuming the boundary effect at the second location is negligible
$\delta$	is the minimum penetration depth in millimetres of the head tissue-equivalent liquids defined in this standard, i.e., $\delta \approx 14$ mm at 3 GHz;
$\Delta SAR_{be}$	in percent of SAR is the deviation between the measured SAR value, at the distance $d_{be}$ from the boundary, and the analytical SAR value.

The measured worst case boundary effect SARuncertainty[%] for scanning distances larger than 4mm is 1.0% Limit, 2%).



#### 4 MEASUREMENT UNCERTAINTY

The guidelines outlined in the IEC/IEEE 62209-1528 and FCC KDB865664 D01 standards were followed to generate the measurement uncertainty associated with a SAR probe calibration using the waveguide or calorimetric cell technique depending on the frequency.

The estimated expanded uncertainty (k=2) in calibration for SAR (W/kg) is +/-11% for the frequency range 150-450MHz.

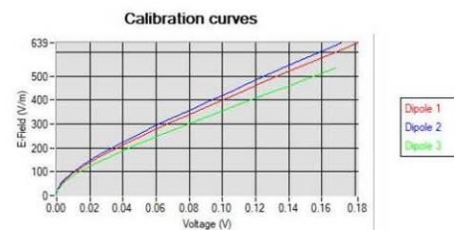
The estimated expanded uncertainty (k=2) in calibration for SAR (W/kg) is +/-14% for the frequency range 600-7500MHz.

#### 5 CALIBRATION RESULTS

Ambient condition	
Liquid Temperature	20 +/- 1 °C
Lab Temperature	20 +/- 1 °C
Lab Humidity	30-70 %

##### 5.1 CALIBRATION IN AIR

The following curve represents the measurement in waveguide of the voltage picked up by the probe toward the E-field generated inside the waveguide.



From this curve, the sensitivity in air is calculated using the below formula.

$$E^2 = \sum_{i=1}^3 \frac{V_i (1 + V_i / DCP_i)}{Norm_i}$$

where

Vi=voltage readings on the 3 channels of the probe

DCPi=diode compression point given below for the 3 channels of the probe

Normi=dipole sensitivity given below for the 3 channels of the probe



Normx dipole 1 ( $\mu\text{V}/(\text{V}/\text{m})^2$ )	Normy dipole 2 ( $\mu\text{V}/(\text{V}/\text{m})^2$ )	Normz dipole 3 ( $\mu\text{V}/(\text{V}/\text{m})^2$ )
1.21	1.09	1.56

DCP dipole 1 (mV)	DCP dipole 2 (mV)	DCP dipole 3 (mV)
106	109	103

## 5.2 CALIBRATION IN LIQUID

The calorimeter cell or the waveguide is used to determine the calibration in liquid using the formula below.

$$ConvF = \frac{E_{liquid}^2}{E_{air}^2}$$

The E-field in the liquid is determined from the SAR measurement according to the below formula.

$$E_{liquid}^2 = \frac{\rho SAR}{\sigma}$$

where

$\sigma$ =the conductivity of the liquid

$\rho$ =the volumetric density of the liquid

SAR=the SAR measured from the formula that depends on the setup used. The SAR formulas are given below

For the calorimeter cell (150-450 MHz), the formula is:

$$SAR = c \frac{dT}{dt}$$

where

$c$ =the specific heat for the liquid

$dT/dt$ =the temperature rises over the time

For the waveguide setup (600-75000 MHz), the formula is:

$$SAR = \frac{4P_W}{ab\delta} e^{-\frac{2z}{\delta}}$$

where

$a$ =the larger cross-sectional of the waveguide

$b$ =the smaller cross-sectional of the waveguide

$\delta$ =the skin depth for the liquid in the waveguide

$P_W$ =the power delivered to the liquid

Page: 7/11

Template\_ACR.DDD.N.YY.MVGB.ISSUE\_COMOSAR Probe v1

This document shall not be reproduced, except in full or in part, without the written approval of MVG. The information contained herein is to be used only for the purpose for which it is submitted and is not to be released in whole or part without written approval of MVG.

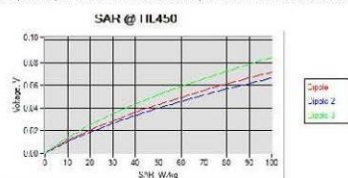

**COMOSAR E-FIELD PROBE CALIBRATION REPORT**

Ref: ACR.199.1.23.BES.A

The below table summarize the ConvF for the calibrated liquid. The curves give examples for the measured SAR depending on the voltage in some liquid.

Liquid	Frequency (MHz*)	ConvF
HL450	450	0.86
BL450	450	0.78
HL750	750	0.80
BL750	750	0.87
HL850	835	0.81
BL850	835	0.80
HL900	900	0.76
BL900	900	0.87
HL1800	1800	0.96
BL1800	1800	1.01
HL1900	1900	1.04
BL1900	1900	1.11
HL2100	2100	1.00
BL2100	2100	1.16
HL2300	2300	1.11
BL2300	2300	1.23
HL2450	2450	1.11
BL2450	2450	1.32
HL2600	2600	1.03
BL2600	2600	1.19
HL5200	5200	1.18
BL5200	5200	0.97
HL5400	5400	1.17
BL5400	5400	1.00
HL5600	5600	1.20
BL5600	5600	0.95
HL5800	5800	1.15
BL5800	5800	1.05

(\*) Frequency validity is +/-50MHz below 600MHz, +/-100MHz from 600MHz to 6GHz and +/-700MHz above 6GHz



Page: 8/11

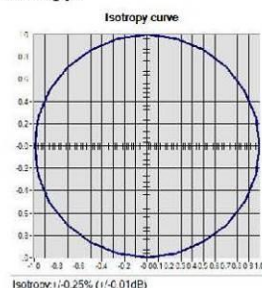
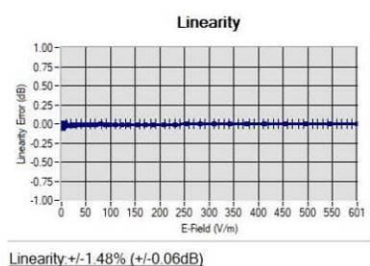
Template\_ACR.DDD.N.YY.MVGB.ISSUE\_COMOSAR Probe vL

This document shall not be reproduced, except in full or in part, without the written approval of MVG. The information contained herein is to be used only for the purpose for which it is submitted and is not to be released in whole or part without written approval of MVG.



## 6 VERIFICATION RESULTS

The figures below represent the measured linearity and axial isotropy for this probe. The probe specification is  $\pm 0.2$  dB for linearity and  $\pm 0.15$  dB for axial isotropy.





## 7 LIST OF EQUIPMENT

Equipment Summary Sheet				
Equipment Description	Manufacturer / Model	Identification No.	Current Calibration Date	Next Calibration Date
CALIPROBE Test Bench	Version 2	NA	Validated. No cal required.	Validated. No cal required.
Network Analyzer	Rohde & Schwarz ZVM	100203	08/2021	08/2024
Network Analyzer	Agilent 8753ES	MY40003210	10/2019	10/2023
Network Analyzer – Calibration kit	HP 85033D	3423A08186	06/2021	06/2027
Network Analyzer – Calibration kit	Rohde & Schwarz ZV-Z235	101223	07/2022	07/2025
Multimeter	Keithley 2000	4013982	02/2023	02/2026
Signal Generator	Rohde & Schwarz SMB	106589	03/2022	03/2025
Amplifier	MVG	MODU-023-C-0002	Characterized prior to test. No cal required.	Characterized prior to test. No cal required.
Power Meter	NI-USB 5680	170100013	06/2021	06/2024
Power Meter	Keysight U2000A	SN: MY62340002	10/2022	10/2025
Directional Coupler	Krytar 158020	131467	Characterized prior to test. No cal required.	Characterized prior to test. No cal required.
Fluoroptic Thermometer	LumaSense Luxtron 812	94264	09/2022	09/2025
Coaxial cell	MVG	SN 32/16 COAXCELL_1	Validated. No cal required.	Validated. No cal required.
Waveguide	MVG	SN 32/16 WG2_1	Validated. No cal required.	Validated. No cal required.
Liquid transition	MVG	SN 32/16 WGLIQ_0G600_1	Validated. No cal required.	Validated. No cal required.
Waveguide	MVG	SN 32/16 WG4_1	Validated. No cal required.	Validated. No cal required.
Liquid transition	MVG	SN 32/16 WGLIQ_0G900_1	Validated. No cal required.	Validated. No cal required.
Waveguide	MVG	SN 32/16 WG6_1	Validated. No cal required.	Validated. No cal required.
Liquid transition	MVG	SN 32/16 WGLIQ_1G500_1	Validated. No cal required.	Validated. No cal required.
Waveguide	MVG	SN 32/16 WG8_1	Validated. No cal required.	Validated. No cal required.

Page: 10/11

Template\_ACR.DDD.N.YY.MVGB.ISSUE\_COMOSAR Probe v1.1

This document shall not be reproduced, except in full or in part, without the written approval of MVG. The information contained herein is to be used only for the purpose for which it is submitted and is not to be released in whole or part without written approval of MVG.


**COMOSAR E-FIELD PROBE CALIBRATION REPORT**

Ref: ACR.199.1.23.BES.A

Liquid transition	MVG	SN 32/16 WGLIQ_1G800B_1	Validated. No cal required.	Validated. No cal required.
Liquid transition	MVG	SN 32/16 WGLIQ_1G800H_1	Validated. No cal required.	Validated. No cal required.
Waveguide	MVG	SN 32/16 WG10_1	Validated. No cal required.	Validated. No cal required.
Liquid transition	MVG	SN 32/16 WGLIQ_3G500_1	Validated. No cal required.	Validated. No cal required.
Waveguide	MVG	SN 32/16 WG12_1	Validated. No cal required.	Validated. No cal required.
Liquid transition	MVG	SN 32/16 WGLIQ_5G000_1	Validated. No cal required.	Validated. No cal required.
Waveguide	MVG	SN 32/16 WG14_1	Validated. No cal required.	Validated. No cal required.
Liquid transition	MVG	SN 32/16 WGLIQ_7G000_1	Validated. No cal required.	Validated. No cal required.
Temperature / Humidity Sensor	Testo 184 H1	44225320	06/2021	06/2024

Page: 11/11

**Template\_ACR.DDD.N.YY.MVGB.ISSUE\_COMOSAR Probe vL**

*This document shall not be reproduced, except in full or in part, without the written approval of MVG. The information contained herein is to be used only for the purpose for which it is submitted and is not to be released in whole or part without written approval of MVG.*



## SAR Reference Dipole Calibration Report

Ref : ACR.329.9.21.BES.A

### **SHENZHEN BCTC TECHNOLOGY CO., LTD.**

**1 ~2/ F, NO. B FACTORY BUILDING, PENGZHOU  
INDUSTRIAL PARK, FUYUAN 1ST ROAD,  
TANGWEI COMMUNITY, FUHAI STREET, BAO'AN  
DISTRICT, SHENZHEN, GUANGDONG, CHINA  
MVG COMOSAR REFERENCE DIPOLE**

**FREQUENCY: 835 MHZ**

**SERIAL NO.: SN 47/21 DIP 0G835-621**

**Calibrated at MVG**

**Z.I. de la pointe du diable**

**Technopôle Brest Iroise – 295 avenue Alexis de Rochon**

**29280 PLOUZANE - FRANCE**

**Calibration date: 11/25/2021**



Accreditations #2-6789 and #2-6814  
Scope available on [www.cofrac.fr](http://www.cofrac.fr)



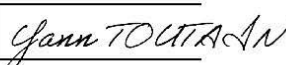
**The use of the Cofrac brand and the accreditation references is prohibited from any reproduction.**

#### *Summary:*

This document presents the method and results from an accredited SAR reference dipole calibration performed in MVG using the COMOSAR test bench. All calibration results are traceable to national metrology institutions.


**SAR REFERENCE DIPOLE CALIBRATION REPORT**

Ref: ACR.329.9.21.BES.A

	<i>Name</i>	<i>Function</i>	<i>Date</i>	<i>Signature</i>
<i>Prepared by :</i>	Jérôme Luc	Technical Manager	11/25/2021	
<i>Checked by :</i>	Jérôme Luc	Technical Manager	11/25/2021	
<i>Approved by :</i>	Yann Toutain	Laboratory Director	11/25/2021	

2021.11.25

11:52:29 +01'00'

	<i>Customer Name</i>
<i>Distribution :</i>	Shenzhen BCTC Technology Co., Ltd.

<i>Issue</i>	<i>Name</i>	<i>Date</i>	<i>Modifications</i>
A	Jérôme Luc	11/25/2021	Initial release

Page: 2/13

**Template ACR.DDD.N.YY.MVGB.ISSUE SAR Reference Dipole vJ**

*This document shall not be reproduced, except in full or in part, without the written approval of MVG. The information contained herein is to be used only for the purpose for which it is submitted and is not to be released in whole or part without written approval of MVG.*



## TABLE OF CONTENTS

1	Introduction.....	4
2	Device Under Test .....	4
3	Product Description .....	4
3.1	General Information .....	4
4	Measurement Method .....	5
4.1	Return Loss Requirements .....	5
4.2	Mechanical Requirements .....	5
5	Measurement Uncertainty .....	5
5.1	Return Loss .....	5
5.2	Dimension Measurement .....	5
5.3	Validation Measurement .....	5
6	Calibration Measurement Results .....	6
6.1	Return Loss and Impedance In Head Liquid .....	6
6.2	Return Loss and Impedance In Body Liquid .....	6
6.3	Mechanical Dimensions .....	7
7	Validation measurement .....	7
7.1	Head Liquid Measurement .....	8
7.2	SAR Measurement Result With Head Liquid .....	8
7.3	Body Liquid Measurement .....	11
7.4	SAR Measurement Result With Body Liquid .....	12
8	List of Equipment .....	13



## 1 INTRODUCTION

This document contains a summary of the requirements set forth by the IEC/IEEE 62209-1528 and FCC KDB865664 D01 standards for reference dipoles used for SAR measurement system validations and the measurements that were performed to verify that the product complies with the fore mentioned standards.

## 2 DEVICE UNDER TEST

Device Under Test	
Device Type	COMOSAR 835 MHz REFERENCE DIPOLE
Manufacturer	MVG
Model	SID835
Serial Number	SN 47/21 DIP 0G835-621
Product Condition (new / used)	New

## 3 PRODUCT DESCRIPTION

### 3.1 GENERAL INFORMATION

MVG's COMOSAR Validation Dipoles are built in accordance to the IEC/IEEE 62209-1528 and FCC KDB865664 D01 standards. The product is designed for use with the COMOSAR test bench only.



**Figure 1 – MVG COMOSAR Validation Dipole**



#### 4 MEASUREMENT METHOD

The IEC/IEEE 62209-1528 and FCC KDB865664 D01 standards provide requirements for reference dipoles used for system validation measurements. The following measurements were performed to verify that the product complies with the fore mentioned standards.

##### 4.1 RETURN LOSS REQUIREMENTS

The dipole used for SAR system validation measurements and checks must have a return loss of -20 dB or better. The return loss measurement shall be performed against a liquid filled flat phantom, with the phantom constructed as outlined in the fore mentioned standards. A direct method is used with a network analyser and its calibration kit, both with a valid ISO17025 calibration.

##### 4.2 MECHANICAL REQUIREMENTS

The IEC/IEEE 62209-1528 and FCC KDB865664 D01 standards specify the mechanical components and dimensions of the validation dipoles, with the dimension's frequency and phantom shell thickness dependent. The COMOSAR test bench employs a 2 mm phantom shell thickness therefore the dipoles sold for use with the COMOSAR test bench comply with the requirements set forth for a 2 mm phantom shell thickness. A direct method is used with a ISO17025 calibrated caliper.

#### 5 MEASUREMENT UNCERTAINTY

All uncertainties listed below represent an expanded uncertainty expressed at approximately the 95% confidence level using a coverage factor of k=2, traceable to the Internationally Accepted Guides to Measurement Uncertainty.

##### 5.1 RETURN LOSS

The following uncertainties apply to the return loss measurement:

Frequency band	Expanded Uncertainty on Return Loss
400-6000MHz	0.08 LIN

##### 5.2 DIMENSION MEASUREMENT

The following uncertainties apply to the dimension measurements:

Length (mm)	Expanded Uncertainty on Length
0 - 300	0.20 mm
300 - 450	0.44 mm

##### 5.3 VALIDATION MEASUREMENT

The guidelines outlined in the IEC/IEEE 62209-1528 and FCC KDB865664 D01 standards were followed to generate the measurement uncertainty for validation measurements.

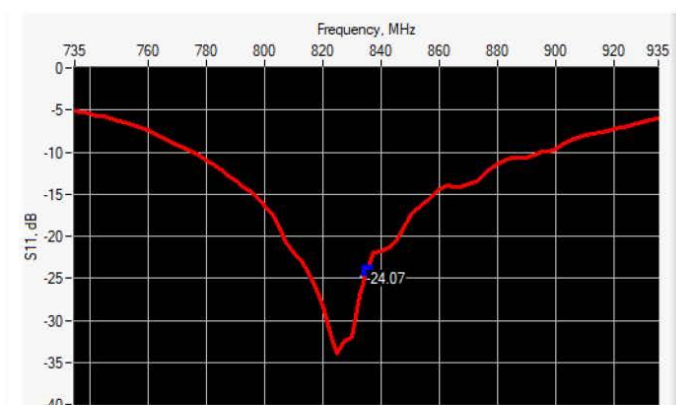

**SAR REFERENCE DIPOLE CALIBRATION REPORT**

Ref: ACR.329.9.21.BES.A

Scan Volume	Expanded Uncertainty
1 g	19 % (SAR)
10 g	19 % (SAR)

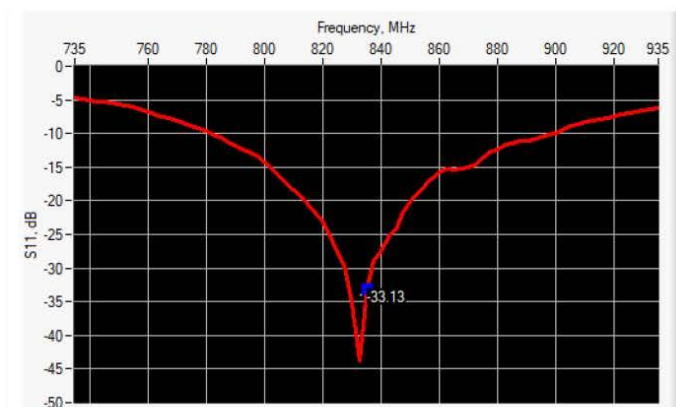
## 6 CALIBRATION MEASUREMENT RESULTS

### 6.1 RETURN LOSS AND IMPEDANCE IN HEAD LIQUID



Frequency (MHz)	Return Loss (dB)	Requirement (dB)	Impedance
835	-24.07	-20	55.3 $\Omega$ - 3.3 j $\Omega$

### 6.2 RETURN LOSS AND IMPEDANCE IN BODY LIQUID



Frequency (MHz)	Return Loss (dB)	Requirement (dB)	Impedance
835	-33.13	-20	52.2 $\Omega$ - 0.4 j $\Omega$

Page: 6/13

**Template\_ACR.DDD.N.YY.MVGB.ISSUE\_SAR Reference Dipole vJ**

This document shall not be reproduced, except in full or in part, without the written approval of MVG. The information contained herein is to be used only for the purpose for which it is submitted and is not to be released in whole or part without written approval of MVG.


**SAR REFERENCE DIPOLE CALIBRATION REPORT**

Ref. ACR.329.9.21 BES.A

### 6.3 MECHANICAL DIMENSIONS

Frequency MHz	L mm		h mm		d mm	
	required	measured	required	measured	required	measured
300	420.0 $\pm 1$ %.		250.0 $\pm 1$ %.		6.35 $\pm 1$ %.	
450	290.0 $\pm 1$ %.		166.7 $\pm 1$ %.		6.35 $\pm 1$ %.	
750	176.0 $\pm 1$ %.		100.0 $\pm 1$ %.		6.35 $\pm 1$ %.	
835	161.0 $\pm 1$ %.	161.47	89.8 $\pm 1$ %.	89.78	3.6 $\pm 1$ %.	3.61
900	149.0 $\pm 1$ %.		83.3 $\pm 1$ %.		3.6 $\pm 1$ %.	
1450	89.1 $\pm 1$ %.		51.7 $\pm 1$ %.		3.6 $\pm 1$ %.	
1500	86.2 $\pm 1$ %.		50.0 $\pm 1$ %.		3.6 $\pm 1$ %.	
1640	79.0 $\pm 1$ %.		45.7 $\pm 1$ %.		3.6 $\pm 1$ %.	
1750	75.2 $\pm 1$ %.		42.9 $\pm 1$ %.		3.6 $\pm 1$ %.	
1800	72.0 $\pm 1$ %.		41.7 $\pm 1$ %.		3.6 $\pm 1$ %.	
1900	68.0 $\pm 1$ %.		39.5 $\pm 1$ %.		3.6 $\pm 1$ %.	
1950	66.3 $\pm 1$ %.		38.5 $\pm 1$ %.		3.6 $\pm 1$ %.	
2000	64.5 $\pm 1$ %.		37.5 $\pm 1$ %.		3.6 $\pm 1$ %.	
2100	61.0 $\pm 1$ %.		35.7 $\pm 1$ %.		3.6 $\pm 1$ %.	
2300	55.5 $\pm 1$ %.		32.6 $\pm 1$ %.		3.6 $\pm 1$ %.	
2450	51.5 $\pm 1$ %.		30.4 $\pm 1$ %.		3.6 $\pm 1$ %.	
2600	48.5 $\pm 1$ %.		28.8 $\pm 1$ %.		3.6 $\pm 1$ %.	
3000	41.5 $\pm 1$ %.		25.0 $\pm 1$ %.		3.6 $\pm 1$ %.	
3300	-		-		-	
3500	37.0 $\pm 1$ %.		26.4 $\pm 1$ %.		3.6 $\pm 1$ %.	
3700	34.7 $\pm 1$ %.		26.4 $\pm 1$ %.		3.6 $\pm 1$ %.	
3900	-		-		-	
4200	-		-		-	
4600	-		-		-	
4900	-		-		-	

## 7 VALIDATION MEASUREMENT

The IEC/IEEE 62209-1528 and FCC KDB865664 D01 standards state that the system validation measurements must be performed using a reference dipole meeting the fore mentioned return loss and mechanical dimension requirements. The validation measurement must be performed against a liquid filled flat phantom, with the phantom constructed as outlined in the fore mentioned standards. Per the standards, the dipole shall be positioned below the bottom of the phantom, with the dipole length centered and parallel to the longest dimension of the flat phantom, with the top surface of the dipole at the described distance from the bottom surface of the phantom.

Page: 7/13

**Template\_ACR.DDD.N.YY.MVGB.ISSUE\_SAR Reference Dipole vJ**

*This document shall not be reproduced, except in full or in part, without the written approval of MVG. The information contained herein is to be used only for the purpose for which it is submitted and is not to be released in whole or part without written approval of MVG.*



## 7.1 HEAD LIQUID MEASUREMENT

Frequency MHz	Relative permittivity ( $\epsilon_r'$ )		Conductivity ( $\sigma$ ) S/m	
	required	measured	required	measured
300	45.3 $\pm$ 10 %		0.87 $\pm$ 10 %	
450	43.5 $\pm$ 10 %		0.87 $\pm$ 10 %	
750	41.9 $\pm$ 10 %		0.89 $\pm$ 10 %	
835	41.5 $\pm$ 10 %	39.9	0.90 $\pm$ 10 %	0.91
900	41.5 $\pm$ 10 %		0.97 $\pm$ 10 %	
1450	40.5 $\pm$ 10 %		1.20 $\pm$ 10 %	
1500	40.4 $\pm$ 10 %		1.23 $\pm$ 10 %	
1640	40.2 $\pm$ 10 %		1.31 $\pm$ 10 %	
1750	40.1 $\pm$ 10 %		1.37 $\pm$ 10 %	
1800	40.0 $\pm$ 10 %		1.40 $\pm$ 10 %	
1900	40.0 $\pm$ 10 %		1.40 $\pm$ 10 %	
1950	40.0 $\pm$ 10 %		1.40 $\pm$ 10 %	
2000	40.0 $\pm$ 10 %		1.40 $\pm$ 10 %	
2100	39.8 $\pm$ 10 %		1.49 $\pm$ 10 %	
2300	39.5 $\pm$ 10 %		1.67 $\pm$ 10 %	
2450	39.2 $\pm$ 10 %		1.80 $\pm$ 10 %	
2600	39.0 $\pm$ 10 %		1.96 $\pm$ 10 %	
3000	38.5 $\pm$ 10 %		2.40 $\pm$ 10 %	
3300	38.2 $\pm$ 10 %		2.71 $\pm$ 10 %	
3500	37.9 $\pm$ 10 %		2.91 $\pm$ 10 %	
3700	37.7 $\pm$ 10 %		3.12 $\pm$ 10 %	
3900	37.5 $\pm$ 10 %		3.32 $\pm$ 10 %	
4200	37.1 $\pm$ 10 %		3.63 $\pm$ 10 %	
4600	36.7 $\pm$ 10 %		4.04 $\pm$ 10 %	
4900	36.3 $\pm$ 10 %		4.35 $\pm$ 10 %	

## 7.2 SAR MEASUREMENT RESULT WITH HEAD LIQUID

The IEC/IEEE 62209-1528 and FCC KDB865664 D01 standards state that the system validation measurements should produce the SAR values shown below (for phantom thickness of 2 mm), within the uncertainty for the system validation. All SAR values are normalized to 1 W forward power. In bracket, the measured SAR is given with the used input power.

Page: 8/13

**Template ACR.DDD.N.YY.MVGB.ISSUE SAR Reference Dipole vJ**

*This document shall not be reproduced, except in full or in part, without the written approval of MVG. The information contained herein is to be used only for the purpose for which it is submitted and is not to be released in whole or part without written approval of MVG.*