

User Manual

Narwal Wet Dry Vacuum S10 Pro

Model: YJSC001

CONTENTS

Dear users:

Thank you for purchasing Narwal products. To access comprehensive support from Narwal, you are recommended to read carefully the manual and illustrations before using the product. Please keep the manual properly.

The manual may be updated from time to time based on product updates and user feedback. Please scan the QR code below to browse the official website and view the latest version.
In case of any problem in using the product, please contact Narwal after-sales customer service through the following ways:

Customer service email:
support@narwal.com (North America)
support.eu@global.narwal.com (Germany)
support.it@global.narwal.com (Italy)
support.jp@narwal.com (Japan)
support.hk@global.narwal.com (France)
support.kr@narwal.com (South Korea)
support.es@global.narwal.com (Spain)

*For other countries, please refer to the after-sales contact information provided by your local vendors

We wish you a pleasant experience!



WWW.NARWAL.COM



Electronic user manual
電子取扱説明書
전자 설명서
Elektronisches Benutzerhandbuch
Manuale Utente Elettronico
Manual de usuario electrónico
Manuel d'utilisation électronique
Электронное руководство пользователя
ອຸປະສານຢູ່ອາວຸໂສ
Sổ tay điện tử
Электроник Килауз
Instrukcja elektroniczna

en	02
ja	09
ko	16
de	23
it	30
es	37
fr	44
ru	51

en

Product At A Glance

Check List

Wet Dry Vacuum



Main unit *1 (including roller brush *1, filter *1)



Handle *1



Self-cleaning base *1 (including cleaning tray *1)

Accessories



Cleaning brush *1 (including a hook knife) (consumable items)



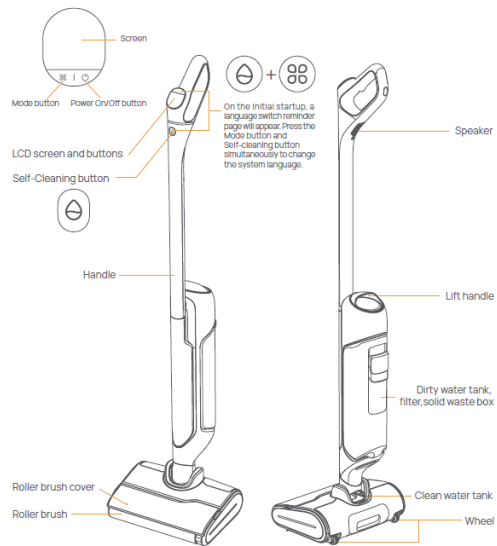
Roller brush *1 (consumable items)



Filter *1 (consumable items)

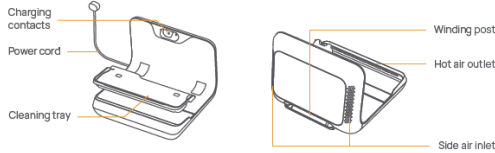
Main Parts

Wet Dry Vacuum



02

Self-cleaning base

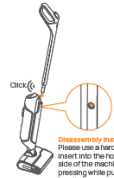


How to Use

First-time Use

How to install the handle

Insert the end of the handle vertically into the main unit until it clicks into place. Make sure the handle is firm without loosening.



Disassembly instructions:
Please use a hard object to insert into the hole on the side of the machine and keep pressing while pulling up the handle to remove it.



Language Switch Instructions

On the initial startup, a language switch reminder page will appear. Press the Mode button and Self-cleaning button simultaneously to change the system language.



How to charge the product

After the self-cleaning base is connected to a power supply, put the wet dry vacuum on the base. When it rings ding-dong, the screen shows the charging animation, and charging starts.

How to fill the clean water tank

1. Take out the clean water tank

Pull out the clean water tank to take it out.



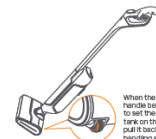
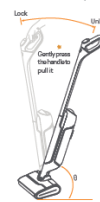
2. Add clean water

Open the sealing cover and fill water from the tank opening to the MAX line.



How to unlock and start the machine

Remove the machine from the self-cleaning base. Short press the Power On/Off button and then follow the voice prompts to slightly press and recline the handle to start cleaning (locked when $\theta > 90^\circ$). You can also recline the handle and then short press the Power On/Off button to use the machine. When the machine is locked (the handle being upright), you can recline it to set the wheels under the clean water tank on the floor. Then you can push or pull it back to the cleaning base like handling a suitcase.



When the machine is locked (the handle being upright), you can recline it to set the rollers under the clean water tank on the floor. Then you can push or pull it back to the cleaning base like handling a suitcase.

Instructions for Use

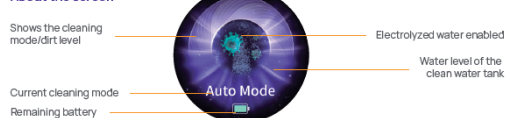
Button functions

*Note: When the vacuum is on the base and the screen is dark, you can press any button to wake up the screen.

Button	Status	Functions
Power On/Off button 	When cleaning the floor	Short press: power on/pause Press and hold for 2s: power off
	During self-cleaning or drying	Short press: end the current task

Mode button 88	When cleaning the floor	Short press: switch the mode (Smart/Turbo/Quiet/Suction) Press and hold: start MAX enhancement; release to end MAX enhancement
	During self-cleaning or charging with the screen on	Short press: start drying only
	During charging with the screen on	Press and hold for 2s: turn on/off voice
Self-Cleaning button	During charging with the screen on	Short press: start self-cleaning and drying in sequence Press and hold for 2s: start self-cleaning only
Mode button+ Self-Cleaning button	Charging/Abnormal Pause	Press the Mode button and Self-cleaning button simultaneously to change the system language.

About the screen



Washer Mode



MAX Enhancement: During the cleaning process, when encountering extremely stubborn stains that are hard to handle, you can activate MAX enhancement by pressing and holding the mode button for maximum cleaning strength.



Low Areas Mode

When the angle between the handle and the floor is below 25°, the machine will automatically switch to the Low Areas Mode. As such areas are generally filled with lots of hairs, dust, and fluff, the machine will intelligently adjust the suction power to avoid dust floating around.

Smart dirt display



Dirt detected: The machine will detect the floor dirt level in real time. When the floor or the roller brush is found to be dirty and the screen animation shows a yellow background, and you are recommended to clean the current location repeatedly. If the background remains yellow when the floor is already clean, you should start self-cleaning.



High dirt level: When the floor or the roller brush is found to be dirty and the screen animation shows a red background, and you are recommended to switch to Turbo Mode to clean the current location. If the background remains red when the floor is already clean, you should start self-cleaning as prompted or manually clean the pipe and the roller brush.

Self-cleaning and drying

Start self-cleaning and drying

- You can choose whether to start self-cleaning based on the dirt level. If necessary, put the machine on the self-cleaning base and short press the Self-Cleaning button to start self-cleaning and drying. To start self-cleaning only, press and hold the Self-Cleaning button for 2s;
- If you only need to start drying, short press the Mode button.



Note: If the machine prompts that the clean water tank is short of water, you need to fill the clean water tank to above the self-cleaning water level line before you can restart self-cleaning.

Cleaning and Maintenance

Suggested Maintenance Cycle

Main part	Part	Suggested maintenance cycle
Main Unit	Dirty water tank	Clean after every use
	Filter	Clean after every use and replace every 3-6 months
	Roller brush cover	Clean regularly on demand
	Roller brush	Clean regularly on demand and replace every 3-6 months
	Pipe	Clean regularly on demand
Self-cleaning base	Cleaning tray	Clean regularly on demand

Maintenance Methods

Dirty water tank

Clean after every use

- Remove the dirty water tank, filter, and solid waste box in order.



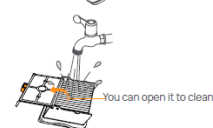
- Rinse the solid waste box and the filter slot.



Filter

Clean after every use and replace every 3-6 months

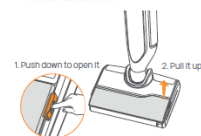
- Clean up the filter with clean water. You can open the filter cover. Shake dry the filter and then put it back into the machine for filter drying.



Roller brush cover

Clean regularly on demand

- Slightly press the roller brush release button to remove the roller brush cover.



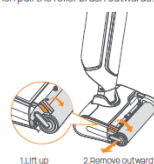
- Rinse the roller brush cover with clean water.



Roller brush

Clean regularly on demand and replace every 3-6 months

- Pull up the lift handle on the left of the roller brush and then pull the roller brush outwards.



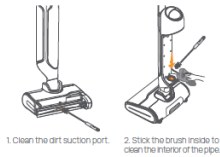
- Clean the roller brush with clean water and the cleaning brush. Use the hook knife to remove hair stuck on the roller brush.



Pipe

Clean regularly on demand

- If the machine prompts a high dirt level when the floor is free from obvious dirt and after several rounds of self-cleaning, the pipe may be dirty;
- The machine prompts that the pipe gets clogged. (Use the cleaning brush to clean the pipe for the above two situations)



Cleaning tray of the self-cleaning base

Clean regularly on demand

- Remove the cleaning tray from the self-cleaning base.



- Clean the tray and put it back into the self-cleaning base.

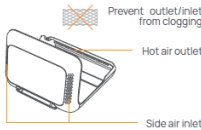


Wet dry vacuum and self-cleaning base

- To ensure optimal performance, you are recommended to maintain all parts regularly;
- Before cleaning any part, please turn off the machine and unplug the power cord;
- Use a clean and dry cloth to scrub clean the machine and the base and prevent water ingress into electrical components;
- Make sure that the air inlet and hot air outlet of the self-cleaning base are free from clogs.



DO NOT rinse with water



Problem Analysis and Troubleshooting

FAQ

In case of any fault when the product is working (no action or fault prompt on the screen or via voice), please refer to the following table:

Problem	Description	Possible causes	Remedies
Unable to turn on or charge the machine	The product cannot start charging/there is no prompt/the product fails to work properly.	The self-cleaning base is not connected to a power source.	Make sure the self-cleaning base has a proper power supply. If not, plug the power cord again and then put the machine on the base for charging.
		The product runs out of battery.	Please put the machine back onto the self-cleaning base for charging.
		The product has poor contact with the self-cleaning base.	Check whether the charging contacts of the base are covered with dirt or fail to pop and whether the charging contacts of the product are covered with dirt. If so, please unplug the power cord and turn off the product, then clean the charging contacts and try again.
Unable to start cleaning	The screen functions properly, but the product does not perform cleaning tasks.	The product is locked.	Please recline the handle to start cleaning.
Part not installed or not in place	The product pauses and broadcasts "Filter of the dirty water tank not in place. Please install it and check the dirty water tank." The outer ring of the screen keeps flashing red.	The dirty water tank is not installed or not in place.	Confirm whether the filter is installed and whether the dirty water tank is in place.
	The product pauses and broadcasts "Roller brush not in place. Please install it." The outer ring of the screen keeps flashing red.	The roller brush is not installed or not in place.	Confirm whether the roller brush is in place. If not, please install it and try again.
Full dirty water tank	The product pauses and broadcasts "Dirty water tank full. Please empty it." The outer ring of the screen keeps flashing red.	The dirty water tank is full.	Empty and clean the dirty water tank and then put it in place.
Clean water tank short of water	The product pauses and broadcasts "Clean water tank short of water. Please refill it." The outer ring of the screen keeps flashing red.	The clean water tank is short of water.	Fill the clean water tank with clean water, put it in place, and try again.

Stuck roller brush	The product pauses and broadcasts "Roller brush stuck. Please clean it." The outer ring of the screen keeps flashing red.	The roller brush fails to work properly because it is stuck by hair or other foreign objects.	Please remove the roller brush to check if there is any foreign matter blocking it. If yes, clean the roller brush and put it back in place.
High dirt level	The product broadcasts "Dirty roller brush detected. You are recommended to put it back to the base for self-cleaning." The outer ring of the screen flashes red for 5s.	The product's dirt sensor detects a consistently high dirt level.	Place the product back onto the base for self-cleaning. If the problem persists after self-cleaning, you can try to clean the dirty water pipe with the cleaning brush.
Pipe clogging	The product pauses and broadcasts "Pipe clogged. Please manually clean the pipe and the roller brush." The outer ring of the screen keeps flashing red.	The product's pipe is clogged.	Use the cleaning brush to clean the pipe and the dirt suction port.
Base overflowing	Self-cleaning pauses and the product broadcasts "Base overflowing. Please clean and air dry the base." The outer ring of the screen keeps flashing red.	Lots of water builds around the base and runs across it.	To avoid electric shock, the product and the base will turn themselves off and report the problem. Please clean and air dry the base timely and contact customer service.

Fault Warning

When the product reports the error on the screen or by voice, it indicates that there is a fault. Please use your phone to scan the QR code and contact customer service for help.

Voice prompt

Remedies

Operation fault. Please contact customer service

Please contact customer service or technical support for more help.

1. If the troubleshooting steps provided in the table above are not effective, you can contact Customer Service via email or reach out to your local purchase channel for contact information. Alternatively, you can scan the QR code on the official website to access more information and assistance;

2. Please use the product as instructed in the manual, and any loss caused by improper use shall be borne by the user.