

变更历史				生产检验标准： ①:模切整齐,无划痕,骑马钉不能起翘,不生锈(需要满足12小时盐雾测试),不伤手。 ②:图文印刷清晰,无墨点,脏污,不受潮。 ③:装订页码顺序正确,无错页,无漏页,无倒页,成形后表面平整无爆边 ④:满足ROHS 2.0,符合欧盟(包装指令)要求。 执行94/62/EC指令要求, 铅(Pb)+镉(Cd)+汞(Hg)、六价铬(Cr(VI))在包材组成物种的总量不超过100PPM 满足卤素声明:卤素(氟,氯,溴,碘), 溴(br)≤900ppm, 氯(cl)≤ 900ppm, br+cl<1500ppm			
版本	Version	描述	Description	日期	Date	修改人	Signature

封面

210mm

143mm

NARWAL™

User Manual
사용자 가이드
取扱説明書
Robot Vacuum and Mop
진공&물걸레 올인원 로봇 청소기
吸引&水拭き2in1ロボット掃除機

Model/모델명/適用型番: YJCC019

材 质	封面128g双铜, 80g哑粉	成型方式	骑订	页 数: 55P
工 艺	连线油	图纸标识	—— 刀线不印刷 —— 尺寸标识不印刷	
印 刷	■ 潘通2090C ■ 潘通1495C ■ 潘通cool gray 11C ■ 潘通cool gray 11C 20%	具体要求	/	

N A R W A L		物料名称	说明书(IP1206多语)	设计 吴嘉丽
此文件为保密文件。请勿在保密协议授权之外使用。复制、脱版、串查或者分发本文件和其附加信息, 其被任何形式的泄露都会被迫追究法律责任。		物料编码	YC-BC-F00145-00-00	比例 1:1
成品公差:±1mm 切纸公差:±0.5mm	日期: 2024/12/30	图纸版本	V1	单位 mm

User Manual Manuel de l'Utilisateur

Robot Vacuum and Mop
Robot Aspirateur et Vadrouille

Dear users:/Chers utilisateurs:

Thank you for purchasing Narwal products. To access comprehensive support from Narwal, you are recommended to read carefully the manual and illustrations before using the product. Please keep the manual properly.

Merci d'avoir acheté des produits Narwal. Pour bénéficier d'un support complet de la part de Narwal, nous vous recommandons de lire attentivement le manuel et les illustrations avant d'utiliser le produit. Veuillez conserver le manuel correctement.

The manual may be updated from time to time based on product updates and user feedback. Please scan the QR code below to browse the official website and view the latest version.

Le manuel peut être mis à jour de temps en temps en fonction des mises à jour du produit et des commentaires des utilisateurs. Veuillez scanner le code QR ci-dessous pour naviguer sur le site officiel et consulter la dernière version.

In case of any problem in using the product, please contact Narwal after-sales customer service through the following ways:

En cas de problème dans l'utilisation du produit, veuillez contacter le service après-vente de Narwal par les moyens suivants :

- Customer service email:
- Courriel du service clientèle :
 - support.na@global.narwal.com(North America)
 - support.eu@global.narwal.com(Germany)
 - support.it@global.narwal.com(Italy)
 - support.jp@global.narwal.com(Japan)
 - support.fr@global.narwal.com(France)
 - support.kr@global.narwal.com(South Korea)
 - support.es@global.narwal.com(Spain)

*For other countries, please refer to the after-sales contact information provided by your local vendors.

*Pour les autres pays, veuillez vous référer aux informations de contact après-vente fournies par vos fournisseurs locaux.

We wish you a pleasant experience!
Nous vous souhaitons une agréable expérience !



WWW.NARWAL.COM



Electronic version of the user manual
Version électronique du Manuel d'utilisateur
Elektronische Version des Benutzerhandbuchs
Versione elettronica del manuale d'uso
Versión electrónica del manual de usuario
Электронная версия руководства пользователя
Kullanım kılavuzunun elektronik versiyonu
Wersja elektroniczna instrukcji obsługi
Bản điện tử sách hướng dẫn sử dụng
ອຸປະກອນທຳມະການ
סמל המידע
جدید ترین نسخه

CONTENTS

en	02
fr-ca	06
de	10
it	14
fr	18
es	22
ru	26
tr	30
pl	34
vi	38
th	42
he	46
ar-sa	50

Regional Availability and Compatibility

Based on user experience consideration and relevant legal and compliant requirements, Narwal products normally sold by Narwal (and its authorized retailers) are only available for use and after-sales service support in the country or region in which they were originally sold. If a product is shipped to any other countries or regions, you might not be able to use the Narwal App to bind the product or perform relevant operations. We recommend that you purchase the local version of the Narwal product from Narwal or its authorized retailers in order to obtain the best product use and service experience.

For avoidance of doubt, Narwal products sold by Narwal (and its authorized retailers) in the PRC are only available for use and after-sales service support in the PRC (for this purpose, excluding Hong Kong, Macao and Taiwan).

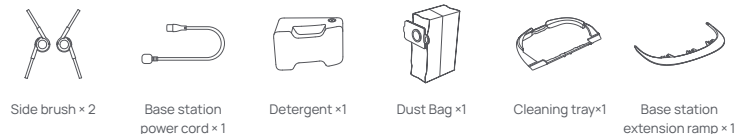
1. Product At A Glance

1.1 Check list

Main parts

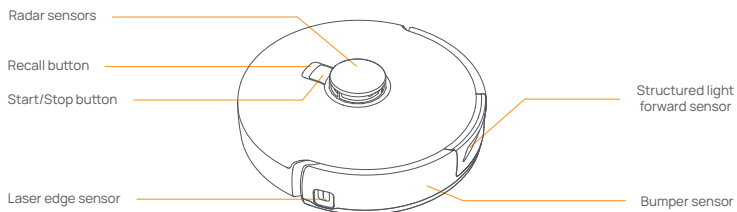


Accessories

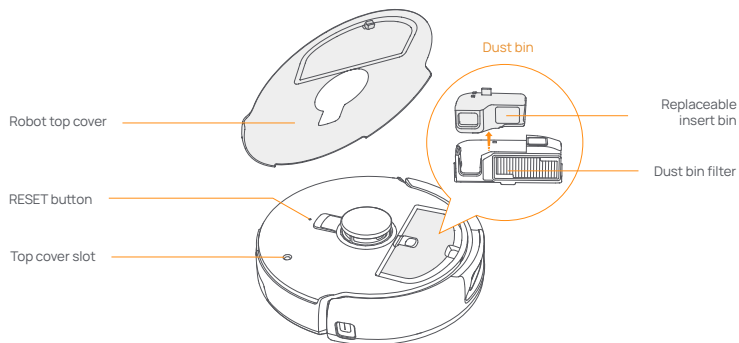


1.2 Robot Accessory

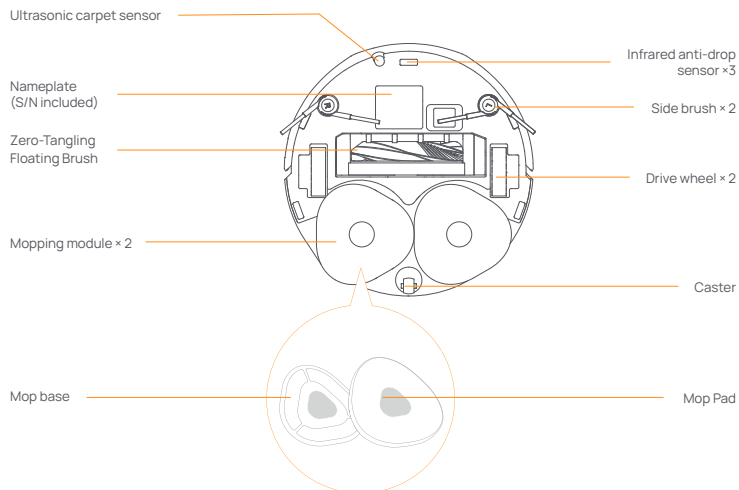
Front (top cover closed)



Front (top cover open)

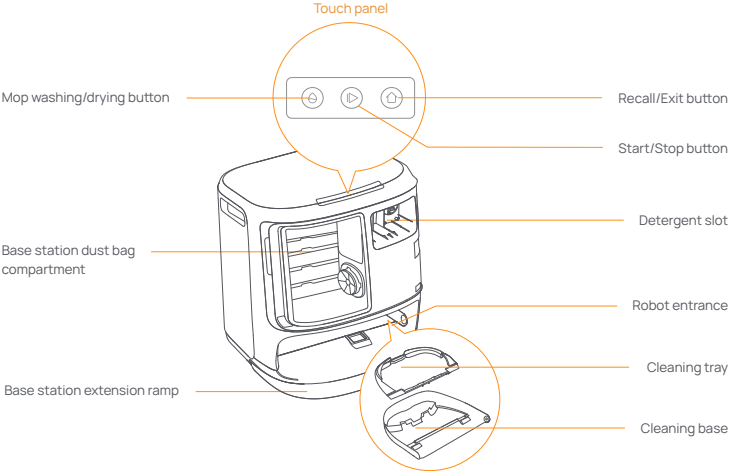


Robot bottom

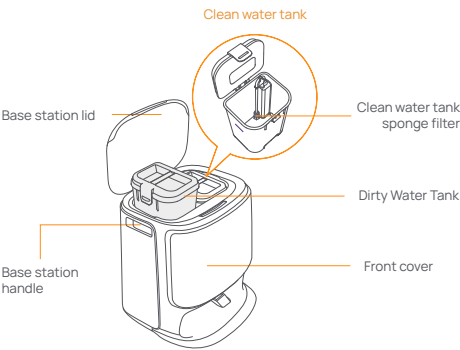


1.3 Base station

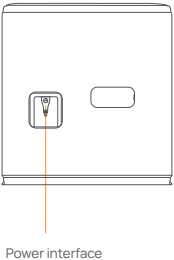
Front of the base station (open the front cover)



Front (lid open)



Back



1.4 Buttons and indicators

Robot buttons

Button	Action	Function
Start/Stop	Short press	Start/pause/resume the current task
	Press and hold for 2s	Power on/off
Recall Home	Short press	Return to the base station
	Short press	Enter the pairing mode
Reset	Press and hold for 5s	Unbind the account and clear user data
	Press and hold for 10s	Restore factory settings

Base station button

Button	Action	Function
	Short press	Start/pause/resume the current task
	Press and hold for 2s during a task	End current task
	Short press	Recall/Exit
	Short press	Start/cancel mop washing
	Press and hold for 10s	Refill/discharge self-check
	Press and hold for 2s	Enter/exit the pairing mode
	Press and hold for 2s	Restart mapping
	Press and hold for 2s	Child Lock on/off

Robot & base station indicators

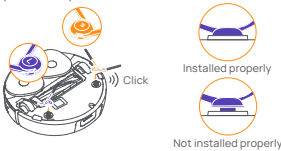
Indicator	Meaning
Steady white	Standby or working
Breathing white	Powering on/Pairing/Updating
Steady Red	Robot error or disconnected

Note: The touch panel goes dark after no operation for 30 seconds.

2. Get Ready Before Use

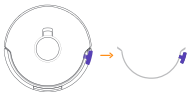
Install the side brushes

Press side brushes into the slots as indicated by color until they click into place.



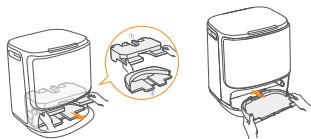
Remove the anti-collision foam

- Lift the top cover sticker to open the robot top cover and remove the anti-collision foam.
- Close the robot's top cover.



Remove the foam and install the cleaning tray

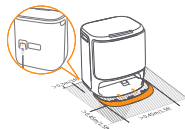
- Remove the two foam pieces that secure the robot inside the base station.
- Insert the cleaning tray into the base station and secure it.



Place the base station

- Plug in the power cord in the back of the base station.
- Put the base station extension ramp on the floor and push it into the bottom of the base station until it clicks into place.
- Leave an open space of at least 0.45 meter long in front of the base station for the robot to enter and leave the base station.

Tips: DO NOT put the base station close to a heat source.



Place the detergent

- Remove the base station front cover, face the cap of the detergent to the base station (DO NOT remove the cap; make sure that the sealing sticker is removed), and horizontally push it into the detergent bin.
- When the detergent is in place, put the base station front cover back.



Base Station Disinfection Dust Bag Installation

- Remove the base station front cover.
- Insert the dust bag into the slot in the marked direction until it hits the bottom.
- Put back the base station front cover.



Add clean water

- Unsnap the clean water tank and fill it with clean water.
- Close the clean water tank cap and put the clean water tank back into the base station.



Boot settings

Push the robot into the base station with side brushes facing outward. The base station will beep once to indicate that charging is successful and the robot will turn itself on and prompt a voice message.

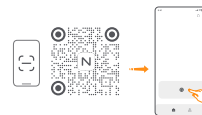


Connect and bind the robot in the App

Download the Narwal App and follow the instructions for connecting and binding the robot.

Note: In the App device page, tap "Settings" > "Device" and then press hold the "Restart Robot" for 10s to turn on/off the power-saving mode.

-The power-saving mode is only available in North America.



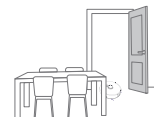
3. How to Use

Before using the robot, please make sure you have finished the installation and base station setup in Chapter 2.

3.1 Organize the home environment



A. Put away the clutter on the floor, e.g. scattered cables, rags, slippers, clothes, and books.



B. Open the doors of the rooms to be cleaned and arrange the furniture to leave as much space as possible for cleaning.



C. Leave other doors closed and install the fence to prevent the robot from entering elevated or low areas.



D. The maximum obstacle crossing height is 20mm and the robot cannot enter rooms with a threshold height of over 20mm. You can purchase Narwal Threshold Ramp to help the robot climb over obstacles.



E. DO NOT stand in front of the robot, on the threshold, or in narrow aisles to avoid omission.

3.2 Mapping

Before cleaning a new home, the robot needs to explore the environment and create a map. Before first-time cleaning, you can trigger mapping by short pressing the ▶ [Start/Stop] button on the base station or tapping [Start Mapping] in the App.

Note:

- Once a map is created, it can be edited in the App.
- Please do not move the base station after a map is created, or you have to restart mapping. If large furniture in your home is rearranged, it is recommended to create a new map.

3.3 Cleaning




Select cleaning modes

The product comes with four built-in cleaning modes: Vacuum, Mop, Vacuum and Mop, and Vacuum then Mop. You can select and adjust parameters like cleaning cycles, suction, and mop humidity for each mode in the App.

Set Freo Mind





The Freo Mind is an intelligent cleaning assistant. When Freo Mind is turned on, the robot will intelligently adjust cleaning parameters, without needing manual settings. You can select whether to activate Freo Mind when starting a cleaning task in the App.

Start cleaning task

- You can start the robot for cleaning in three ways:
- Tap  [Start Cleaning] in the App;
 - Short press the  [Start/Stop] button on the robot to start cleaning. The robot will activate the Vacuum Mode by default;
 - Short press the  [Start/Stop] button on the base station to start cleaning. The robot will activate the Vacuum and Mop Mode by default;

Note: You can adjust the cleaning mode and set more cleaning parameters in the App.

Pause/resume the current task

- You can pause/resume the current task in three ways:
- Tap  [Pause]/  [Resume] in the App;
 - Short press the  [Start/Stop] button on the robot;
 - Short press the  [Start/Stop] button on the base station.





Dust collection

After a vacuuming task starts, the base station will transfer dirt and debris within the robot canister to the dust bag in it. You can also tap dust collection in the App to start dust collection manually.



Mop washing

If the robot is set for multiple mopping runs or the area for cleaning is large, the robot will automatically return to the base station for mop washing. The number of mopping runs and return frequency can be modified in the App before cleaning starts, and the modification during the current cleaning task will take effect during the next task.

End current task

- The robot will navigate itself back to the base station when cleaning ends. You can view the current cleaning report in the App.
- You can manually end the task in the following three ways:
- Press and hold  [Finish] for 2s in the App;
 - Short press the  Home [Recall] button on the robot;
 - Short press the  [Recall] button or long press and hold the  [Start/Stop] button on the base station for 2s.

Mop Drying

- After the last mopping run, the robot will return to the base station for mop washing and drying. The drying time can be modified in the App.
- You can also start mop washing and drying manually in the following two ways:
- Tap  [Mop Washing & Drying] in the App;
 - Short press  [Mop Washing & Drying] button on the base station.

4. Parameters

4.1 Specifications

Robot	Station
Dimensions: 355*350*107.7 mm	Dimensions: 431*426.8*461.5 mm
Weight: ~4.6 kg	Weight: ~11.3kg
Wireless Connection: 2.4GHz, 802.11b/g/n	Rated input: 220-240V~, 50-60Hz/ 100-127V~, 50-60Hz (The actual rated input is based on the product nameplate information.)
Rated input (charging): 20V===2.0A	Rated output: 20V === 2.0A
Rated voltage (working): 14.4V === (lithium ion battery, >5900mAh)	Rated power: Charging: 45W Water heating: 1100W(220-240V~, 50-60Hz) 850-1250W(100-127V~, 50-60Hz) Dust Collection: 450W Drying:65W
Wi-Fi	
Protocol: IEEE 802.11b/g/n	
Frequency Range: 2412~2472MHz	
Max. Transmitter Power (EIRP): ≤20dBm	
Bluetooth	Bluetooth
Protocol: BLE 5.0	Protocol: BLE 5.0
Frequency Range: 2402-2480MHz	Frequency Range: 2402-2480MHz
Max. Transmitter Power (EIRP): ≤10dBm	Max. Transmitter Power (EIRP): ≤10dBm

Battery (Robot)	
Battery Pack Quantity Per Pack:	1 pcs
Battery Type:	Rechargeable Li-Ion Battery
Nominal Voltage:	14.4V ===
Quantity of Battery Cells Per Battery Pack:	8 pcs
Rated Capacity, Rated Energy:	5000mAh, 72Wh

Manufacturer: Yunjing Intelligence Innovation (Shenzhen) Co., Ltd.
Address: A2901, Yunzhongcheng, Building 1, Vanke Yuncheng Phase 6, No.2
Dashi Road, Xili Community, Xili Street, Nanshan District, Shenzhen, Guangdong
Province, China



WWW.NARWAL.COM

Copyright © 2024 Yunjing Intelligence Innovation (Shenzhen) Co., Ltd. All Rights Reserved.
NARWAL is a trademark of Yunjing Intelligence Innovation (Shenzhen) Co., Ltd.