



**Verisure Sàrl**

Chemin Jean-Baptiste Vandelle 3  
CH - 1290 Versoix, Geneva  
Switzerland

# **GWL-MD-PIR INTERNAL PICTURES**

- VERSION 1.4 –

## DOCUMENT INFORMATION

### 1.1 REVISION INFORMATION

| <i>Version</i> | <i>Date</i> | <i>Author</i> | <i>Purpose</i>  |
|----------------|-------------|---------------|---|
| 1.0            | 14/09/2023  | Diego Herrera | First Version   |
| 1.1            | 23/11/2023  | Diego Herrera | Label pictures figure 3.5 and figure 3.6 removed  |
| 1.2            | 24/11/2023  | Andreas Almén | Changed label on figure 3.4 from bottom to top.<br>Added image 3.5                                |
| 1.3            | 29/01/2024  | Andreas Almén | Updated image figure 3.3, 3.4 and 3.6 with higher resolution pictures.<br>Added image figure 3.5, |
| 1.4            | 01/02/2024  | Andreas Almén | Highlighted wifi chip in figure 3.5   |

## **CONFIDENTIALITY**

This document and contents are property of Verisure Innovation AB and is not to be disclosed to any party without Non-Disclosure Agreement, NDA.

## Table of Content

|   |          |
|---|----------|
| <b>1. Scope and Purpose .....</b>             | <b>6</b> |
| <b>2. Product Overview – GWL-MD-PIR .....</b> | <b>7</b> |
| <b>3. GWL-MD-PIR Internal Pictures .....</b>  | <b>8</b> |

## **ABBREVIATIONS**

- HW – Hardware
- LATAM – Latin America
- PCB – Printed Circuit Board
- RF – Radio Frequency
- VSD – Verisure Securitas Direct

## 1. Scope and Purpose

This document provides internal pictures of a GWL-MD-PIR device for LATAM showing all angles, casing, and label of the product.

## 2. Product Overview – GWL-MD-PIR

The GWL-MD-PIR camera is a product that is part of the Verisure alarm system portfolio. This device has the capability of performing object and motion detection as well as taking photos and video. It is a battery powered device that is mounted on a wall. The GWL-MD-PIR camera is shown in **Figure 2.1**.



**Figure 2.1.** Photo of the GWL-MD-PIR camera.

### 3. GWL-MD-PIR Internal Pictures



**Figure 3.1.** Photo of the HW internal parts of the GWL-MD-PIR (front).



**Figure 3.2.** Photo of the HW internal parts of the GWL-MD-PIR (back).



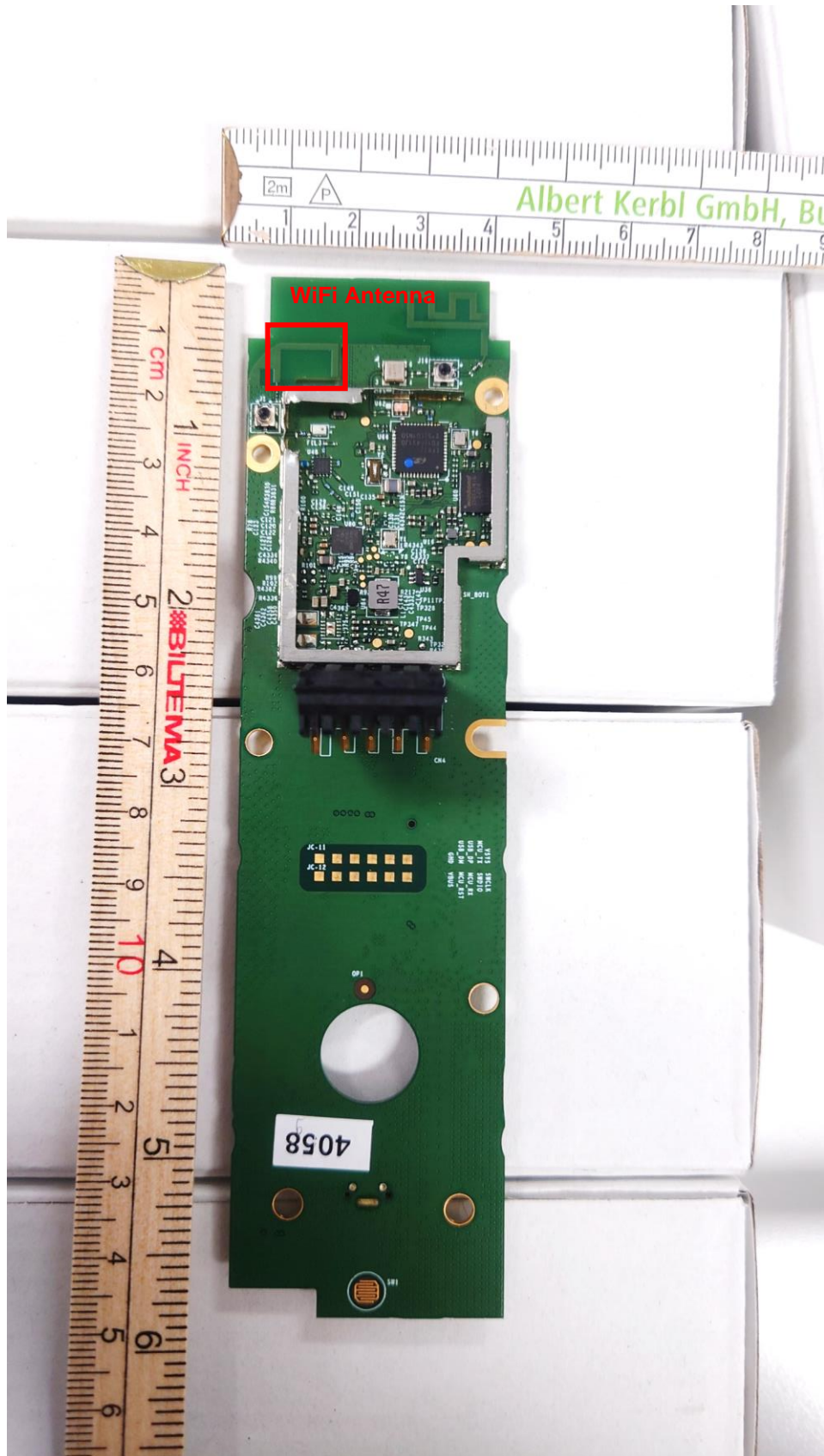


Figure 3.3. GWL-MD-PIR PCB top.

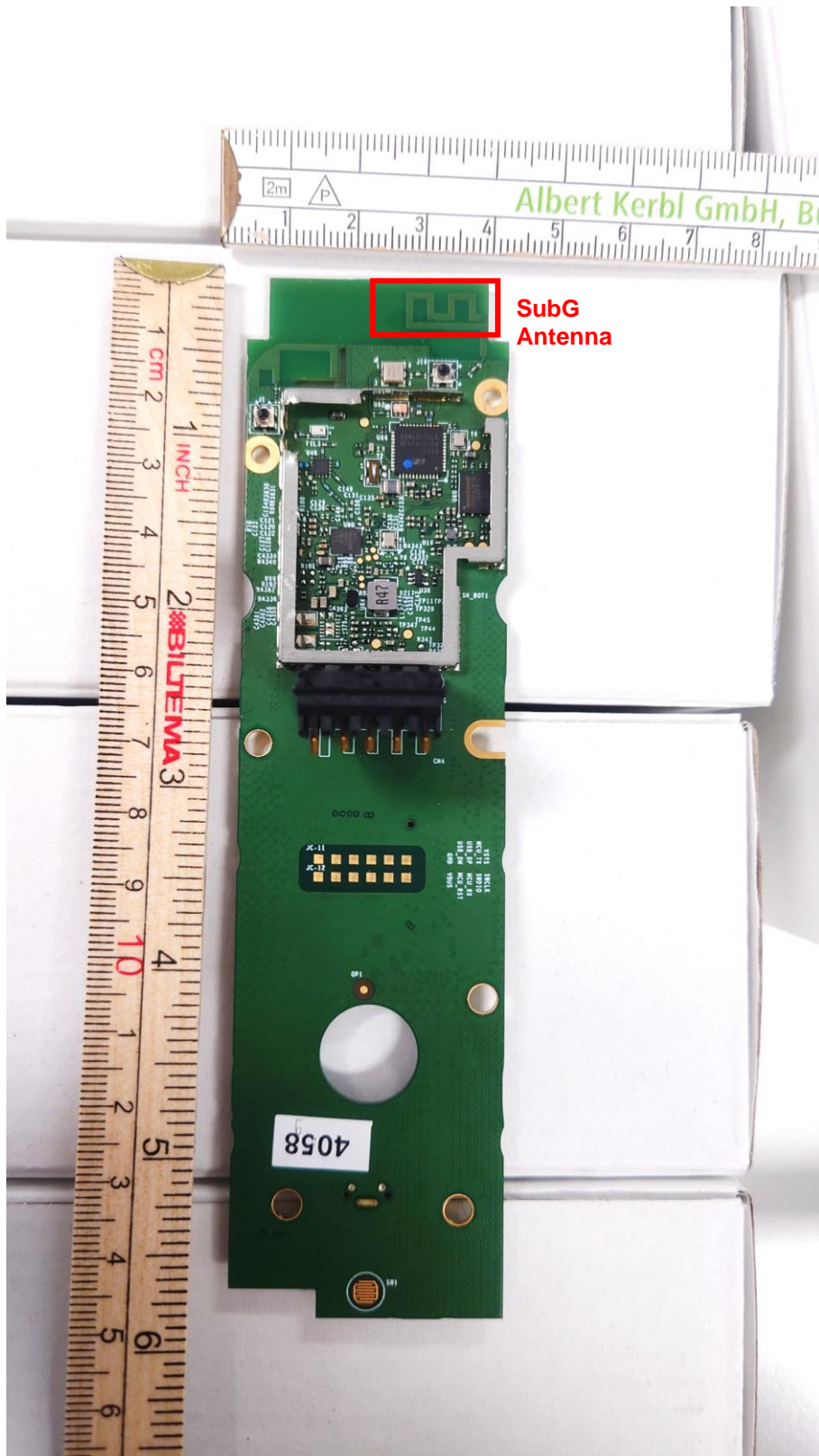


Figure 3.4. GWL-MD-PIR PCB top.

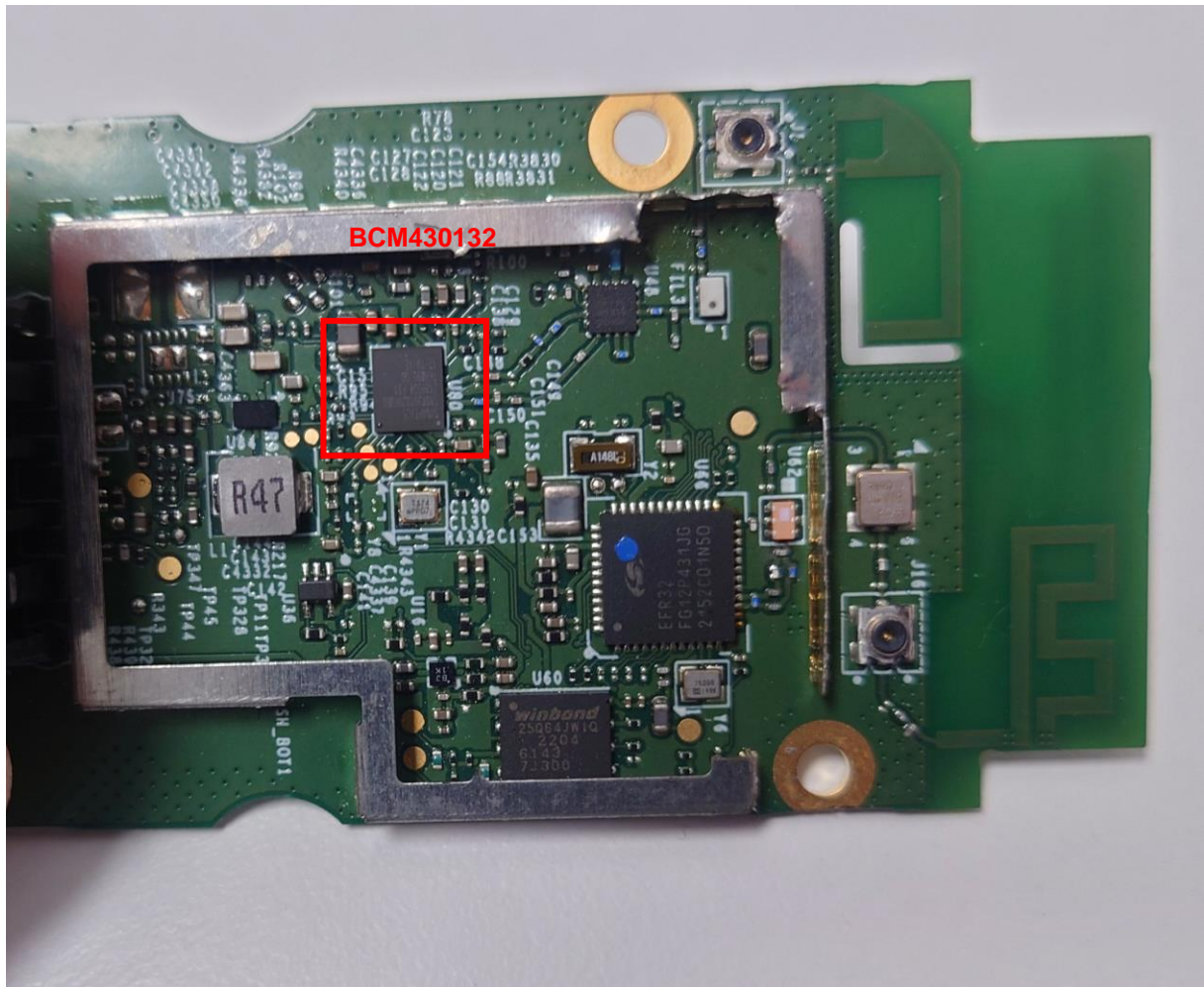


Figure 3.5. GWL-MD-PIR PCB top close-up.



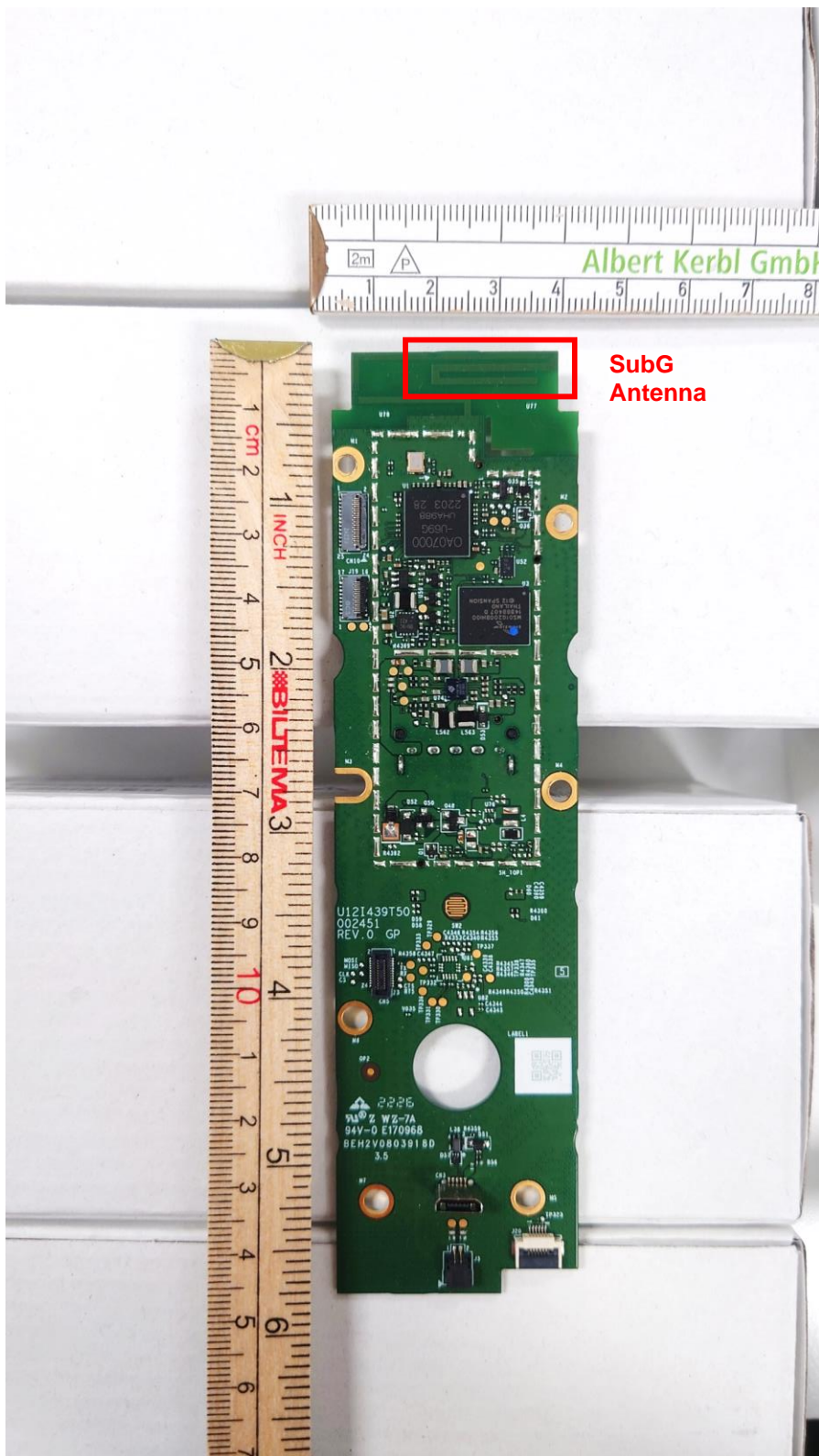


Figure 3.6. GWL-MD-PIR PCB bottom.