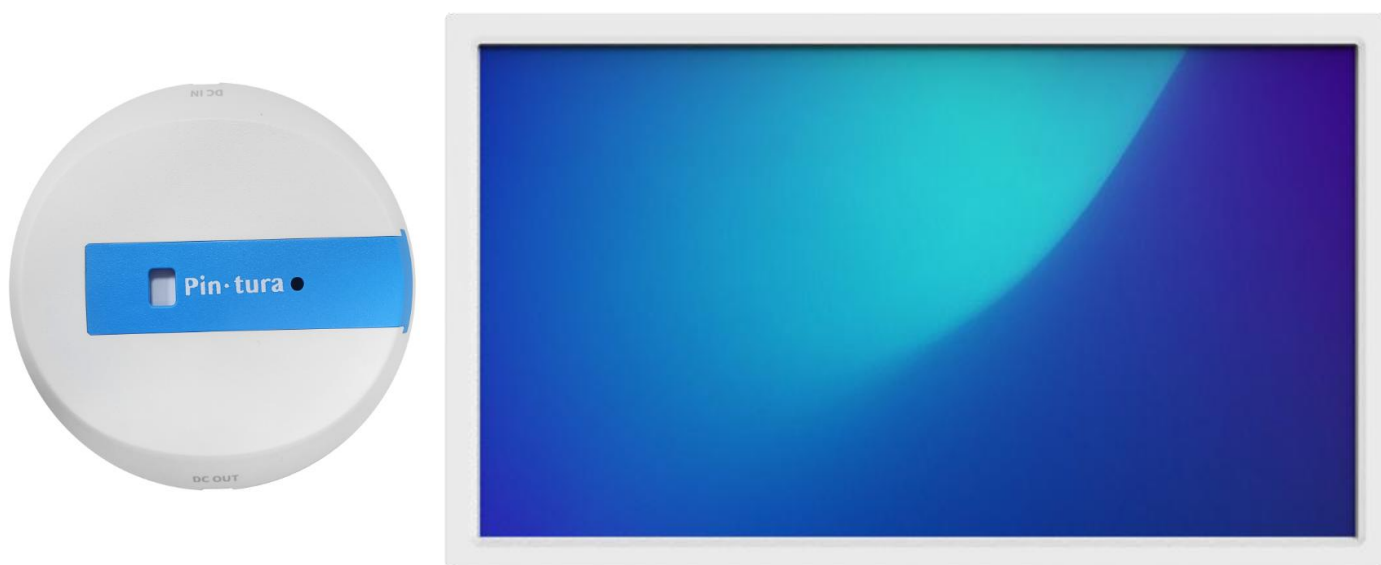


## Product Overview

Pintura, an innovative display system with perfect integration of design and function, not only redefines the concept of digital photo frames, but also brings an unprecedented application experience in the field of photography and photography. Its stylish and sophisticated look is integrated into every corner of life, whether it is family photos, travel memories, or professional works of art, Pintura can be perfectly displayed, making memories accessible.



## Product Features

### Innovative Design

The magnetic wireless power supply provides stable and reliable power support for the screen, and enables the screen to rotate flexibly, increasing the diversity and convenience of application scenarios.

### Exquisite Design

With magnetic fixation and positioning functions, flexible wireless power supply, not only can do pendulum, by supporting a maximum of 16 cascades, to meet the needs of large event scenarios.

### Transverse Compatible

The wireless charging board can power not only the screen, but also the phone.

## Screen Specifications

Size	15.6"
Display Size	344.16x193.59mm
Frame size (L*W*T)	370.3*219.7*13mm
Brightness	250cd/m <sup>2</sup>
Resolution	1920*1080
Viewing Angle	180°
Power Consumption	6.5W
Power Supply	12V/1A
Wireless Connection	WIFI5+BT4.2
Operating System	Linux
Flash Memory	4Gb
BT/RESET	1
Number of Playable Files	50
Storage Temperature Range	-20~60°C
Operating Temperature Range	0~50°C
Weight	600g

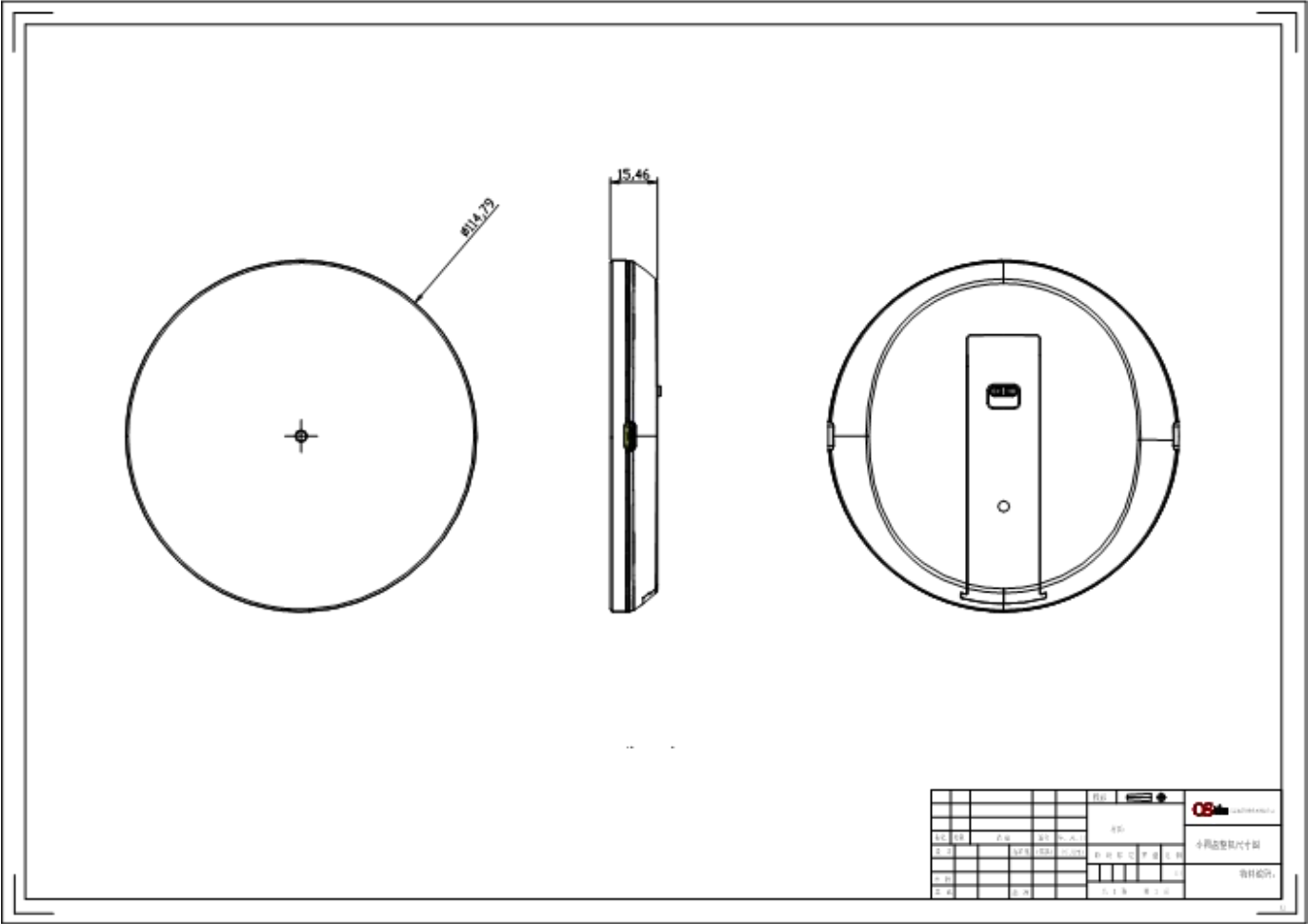
## Wireless Charging Board Specifications

Size	Φ114.79*15.46mm
Current and Voltage	12V~21V/1.5A (max)
Power Consumption	<=15w
Power Input	Type-C, Support QC, PD protocol
Power Output	Type-C
Cascade Connection	Supports a maximum of 16 wireless charging boards
Wireless Power Supply	WPC Qi Version 1.2.4
Power Efficiency	>70%
Weight	0.12kg
Magnetic Attraction Force	about 2.5KG
Size	<=5mm

## Accessories

Wireless Charging Board	1
Adapter	1
Warranty Card	1
10.1" Screen	1

Product Appearance



#### FCC Warning

This device complies with part 15 of the FCC rules. Operation is subject to the following two conditions: (1) this device may not cause harmful interference, and (2) this device must accept any interference received, including interference that may cause undesired operation.

Changes or modifications not expressly approved by the party responsible for compliance could void the user's authority to operate the equipment.

NOTE: This equipment has been tested and found to comply with the limits for a Class B digital device, pursuant to part 15 of the FCC Rules. These limits are designed to provide reasonable protection against harmful interference in a residential installation. This equipment generates uses and can radiate radio frequency energy and, if not installed and used in accordance with the instructions, may cause harmful interference to radio communications. However, there is no guarantee that interference will not occur in a particular installation. If this equipment does cause harmful interference to radio or television reception, which can be determined by turning the equipment off and on, the user is encouraged to try to correct the interference by one or more of the following measures:

- Reorient or relocate the receiving antenna.
- Increase the separation between the equipment and receiver.
- Connect the equipment into an outlet on a circuit different from that to which the receiver is connected.
- Consult the dealer or an experienced radio/TV technician for help.

#### Radiation Exposure Statement

This equipment complies with FCC radiation exposure limits set forth for an uncontrolled environment. This equipment should be installed and operated with minimum distance 20cm between the radiator and your body.