

Product Overview

Pintura, an innovative display system with perfect integration of design and function, not only redefines the concept of digital photo frames, but also brings an unprecedented application experience in the field of photography and photography. Its stylish and sophisticated look is integrated into every corner of life, whether it is family photos, travel memories, or professional works of art, Pintura can be perfectly displayed, making memories accessible.



Product Features

Innovative
Design

The magnetic wireless power supply provides stable and reliable power support for the screen, and enables the screen to rotate flexibly, increasing the diversity and convenience of application scenarios.

Exquisite
Design

With magnetic fixation and positioning functions, flexible wireless power supply, not only can do pendulum, by supporting a maximum of 16 cascades, to meet the needs of large event scenarios.

Transverse
Compatible

The wireless charging board can power not only the screen, but also the phone.

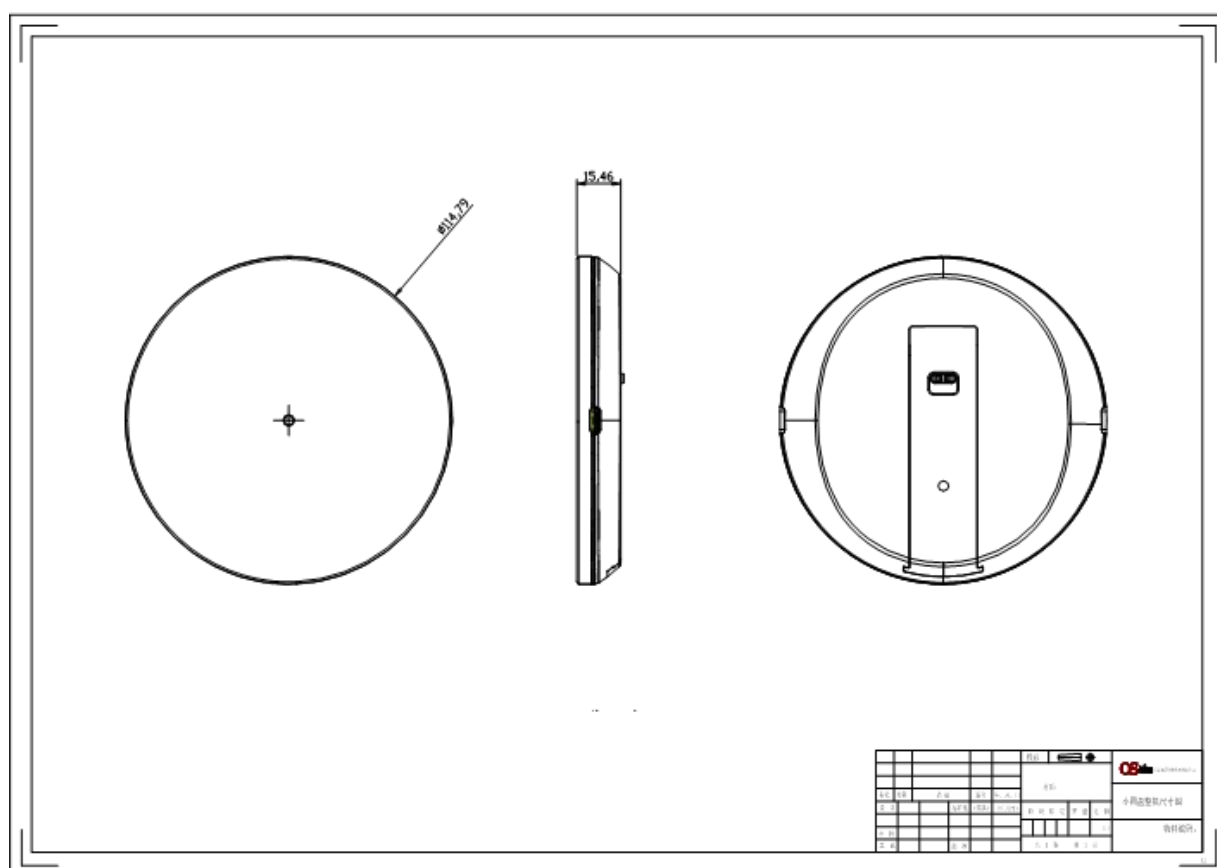
Wireless Charging Board Specifications

Size	Φ114.79*15.46mm
Current and Voltage	12V~21V/1.5A (max)
Power Consumption	<=15w
Power Input	Type-C, Support QC, PD protocol
Power Output	Type-C
Cascade Connection	Supports a maximum of 16 wireless charging boards
Wireless Power Supply	WPC Qi Version 1.2.4
Power Efficiency	>70%
Weight	0.12kg
Magnetic Attraction Force	about 2.5KG
Size	<=5mm

Accessories

Wireless Charging Board	1
Adapter	1
Warranty Card	1

Product Appearance



FCC Statement

This device complies with part 15 of the FCC Rules. Operation is Subject To the following two conditions:

(1) This device may not cause harmful interference, and (2) this device must accept any interference received, including interference that may cause undesired operation. Changes or modifications not explicitly approved by the party responsible for compliance could void the user's authority to operate this equipment.

Note: this equipment has been tested and found to comply with the limits for a Class B digital device, pursuant to part 15 of the FCC Rules. These limits are designed to provide reasonable protection against harmful interference in a residential installation. This equipment generates, uses and candidate radio frequency energy and, if not installed and used in accordance with the instructions, may cause harmful interference to radio communications. However, there is no guarantee that interference will not occur in a particular installation. If this equipment does cause harmful interference to radio or television reception, which can be determined by turning the equipment off and on, the user is encouraged to try to correct the interference by one or more of the following measures:

- Reorient or relocate the receiving antenna.
- Increase the separation between the equipment and receiver.
- Connect the equipment into an outlet on a circuit different from that to which the receiver is connected.
- Consult the dealer or an experienced radio/TV technician for help.

The equipment complies with FCC radiation exposure limits set forth for an uncontrolled environment. During the operation of device a distance of 15 cm surrounding the device and 20 cm above the top surface of the device must be respected.