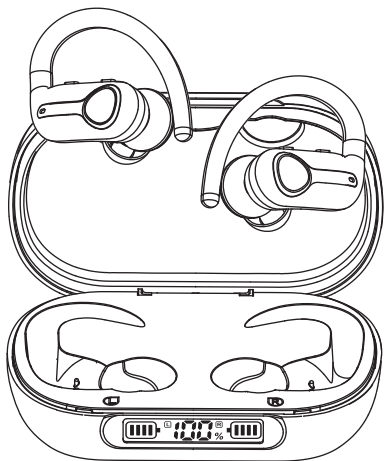




WIRELESS EARBUDS



USER MANUAL

Contents

Packing List -----	1
Product Overview -----	2
Wear -----	3
Power On -----	4
Power Off -----	5
Pairing -----	6-7
Phone Calls Control -----	8
Music -----	9
Activate "Siri" -----	10
Resetting -----	10
Charging-----	11-12
Specification -----	13
Safety Instruction -----	14
FAQ List -----	15
Kind Tips -----	16

Packing List



Earbuds * 2

(Please tear off the insulation sticker on the earbuds before first use.)



Ear tips*8 [XS/ S / M / L]

(Size "M" ear tips are attached to the earphone)



Charging Case



Type-C Charge Cable

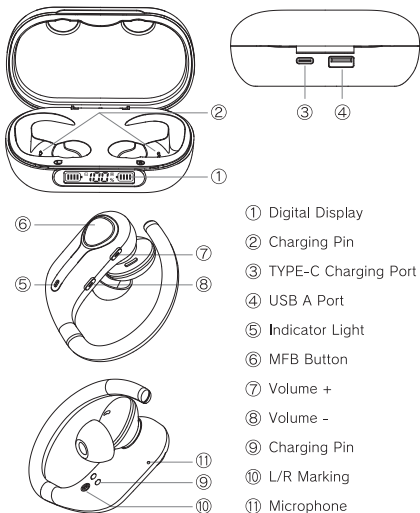


User Manual

Package Contents:

- A. Earbuds x 2
- B. Ear Tips x 8
- C. Charging Case x 1
- D. Type-C Charging Cable x 1
- E. User Manual x 1

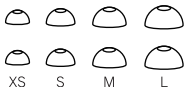
Product Overview



If any questions are not answered in the manual, please check the product description on Amazon (FAQ at the product listing bottom), or contact our store customer service team through the Amazon platform, we will reply within 24 hours.

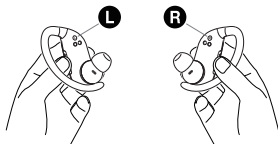
Wear

1. Choose the ear tips that fit your ears best, replace it on the earphones.

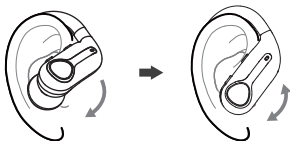


- * It comes with 4 pairs of eartips, among which medium-sized are pre-installed.

2. Please follow the "L" (Left) and "R" (Right) markings on the earbuds to wear the earbuds correctly.



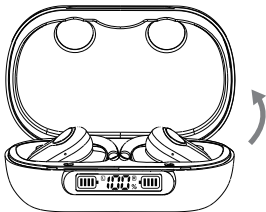
3. Twist the earbuds to adjust the ear hooks until you find the most comfortable and secure position.



Power On

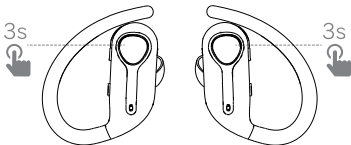
Auto Power On

Just open the charging case, the earbuds will power on automatically.



Manual Power On

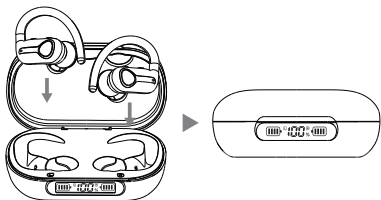
Long press the "MFB" button for 3s, the earbuds will power on and you will hear a voice prompt "Power On". The blue indicator light flashes slowly twice.



Power Off

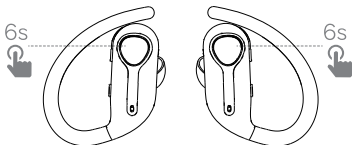
Auto Power OFF

Put the earbuds into the charging case and close the case, the earbuds will power off automatically.



Manual Power OFF

Long press the “MFB” button for 6s, the earbuds will power off and you will hear a voice prompt “Power off”. The red indicator light flashes slowly twice.



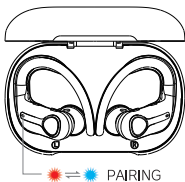
NOTE:

- 1.The earbuds will automatically power off after 5 minutes if no device is connected.
- 2.If one side earphone power off, the other will keep power on until you put it back to the charge case or long press to power off.

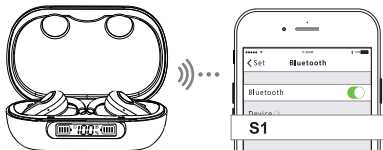
Pairing

Stereo mode

1. Open the charging case, the earbuds will automatically power on, then connect to each other and wait for pairing, you will hear a voice prompt "Pairing". The master earbud (Left) will alternately flash red and blue light, and the light of right earbud is off.

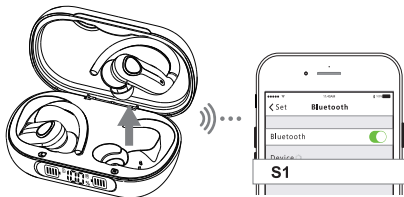


2. Turn on the bluetooth of your phone to search and click the "S1", earbuds will connect with your phone. The light will turn off after the successful pairing, and you will hear a voice prompt "Connected".



Mono Mode

1. Take one earbud out of the charging case.
2. Turn on the bluetooth of your phone to search and click the "S1", the earbud will connect to your phone.



NOTE:

- * After it is disconnected from the phone, the earbuds will automatically enter the pairing state and auto power off after 5 minutes.
- * If there is a pairing record, it will automatically reconnect to the last connected device when power on next time. (No need to remove the earbuds from the charging seat)

Phone Calls Control

Answer/End Calls:

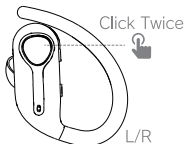
Click the “MFB” button of “Right or Left Earbud”.



* You will hear a voice prompt “Incoming Call + Phone number” when a call comes in and “Call Ended” after end calls.

Reject Calls:

Double click the “MFB” button of “Right or Left Earbud”.



* You will hear a voice prompt “Call Rejected”.

Music

Play/Pause: Click the “MFB” button of “Right or Left Earbud”.



Next Track: Double-click the “Volume +” button of the “Right or Left Earbud”.



Previous Track: Double-click the “Volume -” button of the “Right or Left Earbud”.



Volume Up: Click or Long press the “Volume +” button of the “Right or Left Earbud”.



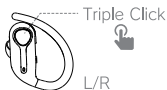
Volume Down: Click or Long press the “Volume -” button of the “Right or Left Earbud”.



NOTE: When the volume is set to maximum/minimum, you will hear a voice prompt “Volume Maximum” / “Volume Minimum”.

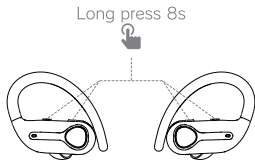
Activate "Siri"

Triple-click the "MFB" button of "Right or Left Earbud" .



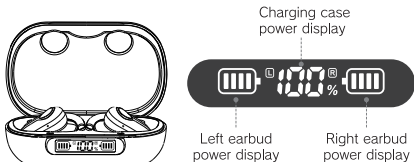
Resetting

1. Press and hold the button "volume+" and "volume-" of both earphones for 8s simultaneously in power on state, the red and blue lights flash 3 times, then earbuds will be power off.
2. Delete "S1" record on your phone and deactivate the bluetooth setting.
3. Put the earbuds back into the charging case.
4. Wait for 10s to open the charging case and turn on the bluetooth of your phone. Click "S1" to connect, earbuds will work properly.



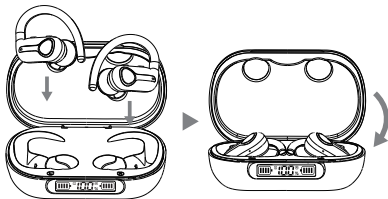
Charging

Digital Power Display



Earbuds Charging

Put the earbuds into the charging case and close the case. The charging case power display indicator scrolls and flashes when the left and right earbuds are charging, power display indicator remaining on when earbuds are fully charged, and turns off after 15 seconds. (About 1-1.5 hours for fully charged)

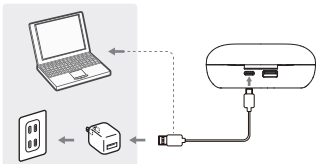


NOTE:

* Power level 20% starts to alarm, there will be a voice prompt "Low Battery, Please Charge" every 30s, and the red light flash slowly.

Charging for the Case

Use the type-c charging cable (included) to connect the computer or an adapter (not included) to charging case. The charging case power display will be 100% after fully charged. (About 3-4 hours for fully charged)

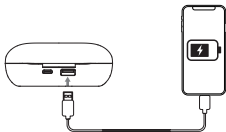


NOTE:

- * When the charge box power is 10% or below, the number on the charge box jumps to indicate that the power is low and needs to be charged in time.
- * 5V/1A or 5V/1.5A is the best choice for charging.

Charging for other device

You can use this charging case as a portable power bank to charge other devices in an emergency. Insert the charging cable into the charging case USB A output port and other end is connected to the mobile phone.



NOTE:

- * The type-c port only works for charging the charging case.

Specification

Model	S1
Operating Mode	Mechanical Button
Bluetooth Version	V5.3
Frequency range	2.402–2.480 GHz
Supporting Protocols	HSP/HFP/A2DP/AVRCP
Transmission Distance	≥ 10m/33 feet (without obstacles)
Earbuds Battery Capacity	50mAh*2Pcs
Charging Case Battery Capacity	1800mAh
Earbuds Charging Time	1-1.5 Hours
Charging Case Charging Time	3-4 Hours
Music Time	7-8 Hours
Standby Time	130 Hours
Charging port	Type-C

Safety Instruction

- * Do not expose the earbuds to high or low temperatures, and do not use the earbuds during a thunderstorm.
- * Keep the product away from fire and heat sources.
- * Do not dispose of this product in fire to avoid explosion.
- * Do not immerse product in liquids and do not touch the charging port with wet hands.
- * Built-in a lithium-ion battery, keep the earbuds away from children and pets.
- * Do not allow small children to use the earbuds.
- * Do NOT make any alterations to this product, we do not guarantee performance if it is modified by people.
- * To protect your ears, please adjust to an appropriate volume when using earphone.
- * This product contains magnetic material. If you are using a medical device, please consult your doctor before using it.
- * If you feel sick while using this product, please stop using it immediately.

FAQ List

- 1) Can't hear sound from earbuds
 - Make sure the earbuds have been turned on.
 - Make sure there is a successful connection between earbuds and the phone.
 - Make sure that your phone is within a strong signal range and that there is no external interference.
 - Turn up the volume on your phone.
 - Check whether your phone is connected to other devices.
- 2) It doesn't charge when you put both earbuds back to the case.
 - Make sure the charging case is not in a low battery state. In this case, please charge the charging case in time.
 - Make sure the earbuds are properly placed in the charging case, if not please adjust them lightly until achieving successful charging.
 - Please wipe the charging contacts on the earbuds and the charging pins in the case.
- 3) The earbuds does not power on.
 - The battery of the earphone is low, please charge.
 - If the earbuds cannot be used, please try to perform a factory reset.
- 4) Earbuds disconnected.
 - Make sure the earphone has enough power, if the power is too low, it will disconnect.
 - The earbuds and the phone exceed the effective distance, bluetooth disconnected.
 - When the product is used in an environment with electromagnetic fields or radiation, the connection may be disturbed.

Kind Tips

1. If you don't use this product for a long time, please store it in a dry environment, avoid extreme temperature and dust. Charge the earphones at least once a month to prolong life.
2. Clean the earphones and charging case with a dry cloth or cotton swab after use.
3. If you have any question while using the product, you can contact us via Amazon mail, it will be our pleasure to support you.

**THANK
YOU**

This device complies with part 15 of the FCC Rules. Operation is subject to the following two conditions: (1) This device may not cause harmful interference, and (2) this device must accept any interference received, including interference that may cause undesired operation.

Any Changes or modifications not expressly approved by the party responsible for compliance could void the user's authority to operate the equipment.

Note: This equipment has been tested and found to comply with the limits for a Class B digital device, pursuant to part 15 of the FCC Rules. These limits are designed to provide reasonable protection against harmful interference in a residential installation. This equipment generates uses and can radiate radio frequency energy and, if not installed and used in accordance with the instructions, may cause harmful interference to radio communications. However, there is no guarantee that interference will not occur in a particular installation. If this equipment does cause harmful interference to radio or television reception, which can be determined by turning the equipment off and on, the user is encouraged to try to correct the interference by one or more of the following measures:

- Reorient or relocate the receiving antenna.
- Increase the separation between the equipment and receiver.
- Connect the equipment into an outlet on a circuit different from that to which the receiver is connected.
- Consult the dealer or an experienced radio/TV technician for help.

成品尺寸: 65mm X100mm

材质: 105g哑粉纸

印刷颜色: 四色印刷

装订方式: 20P骑马钉