

1:12

Instruction manual

Cyclone Spray Car

Exhaust gas spray
Simulating Helium acceleration
Flamethrower effect

Thank you for purchasing one of our toy products. To ensure that you get the most out of your new purchase, please read these instructions carefully before using the toy for the first time. They contain important information on how to operate the product.

⚠ Caution:

▪ Electrical product

This product is not suitable for children aged 8 or under. When using electrical products, precautions must be taken to prevent the risk of an electric shock.

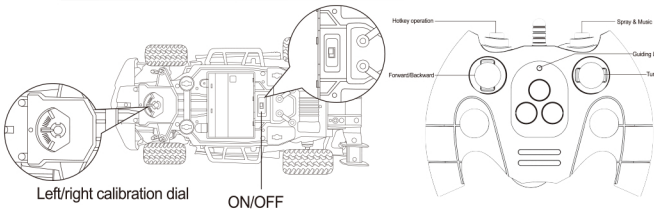
▪ Ensure adult supervision at all times

Warning: Do not attempt to modify or re-assemble this product. Unauthorized changes may void your right to use the product.

Charging the batteries

1. Insert the USB plug into an indoor USB power supply, and then connect the battery compartment to the charging cable.
2. The charging time is about 120 minutes. Flash red light when charging
3. Regularly inspect the toy, battery charger, charging cable, connectors and other components for signs of damage. In the event of any damage, discontinue use and send the parts for repair.

Calibrating the vehicle

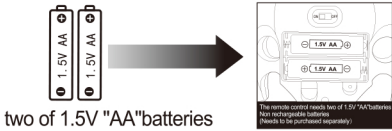


Instructions:

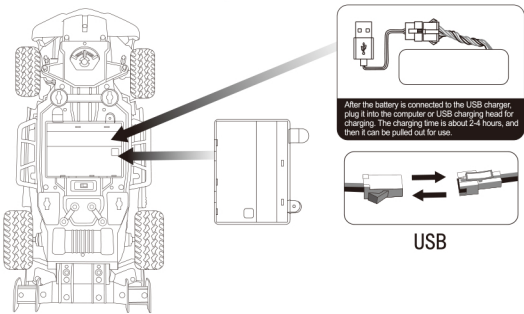
- Check that the ON/OFF switch is in the "ON" position. The vehicle will not respond to the remote control when the switch is in the "OFF" position.
- If the vehicle strays to the left, move the calibration dial to the right until the vehicle travels in a straight line.
- If the vehicle strays to the right, move the calibration dial to the left until the vehicle travels in a straight line.

Inserting the remote control batteries

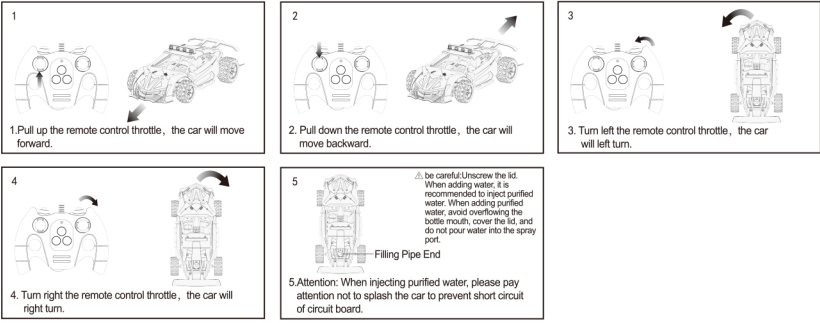
1. Observe the polarity markings on the battery compartment to ensure that the batteries are inserted in the correct polarity.
2. Attach the cover to the battery compartment as shown in the diagram below.
3. Insert rechargeable batteries into the battery compartment.
4. Use a screwdriver to secure the battery compartment cover in place.



Inserting the battery compartment into the vehicle



Basic controls



Using the vehicle

1. Switch on the vehicle using the ON/OFF switch.
2. If the vehicle does not move in a straight line, adjust the calibration dial on the bottom of the chassis.
3. Switch off the vehicle and remote control after use.

Battery safety information

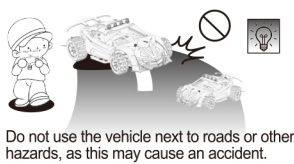
1. The batteries must only be charged under adult supervision.
2. Before charging the batteries, remove the battery compartment from the vehicle chassis.
3. Remove empty batteries from the vehicle and remote control.
4. Ensure that the vehicle is switched off before inserting the batteries.
5. Ensure that the batteries are inserted in the correct polarity (observe the + and - markings on the battery compartment).
6. Do not attempt to charge non-rechargeable batteries.
7. Do not short circuit the battery terminals.
8. If you do not plan to use the vehicle for an extended period, remove the batteries from the vehicle and remote control to prevent leakage.
9. Do not throw batteries into open flames, as this may cause them to explode or leak.
10. Do not mix old and new batteries or batteries from different manufacturers.
11. Only use batteries from recommended or reputable manufacturers.
12. Regularly inspect the batteries for signs of leakage.
13. Keep this instruction manual in a safe place for future reference. It contains important information on how to use the product safely.

Care and maintenance

1. Remove the batteries when you do not plan to use the toy for an extended period.
2. Use a damp cloth to wipe the vehicle clean.
3. Do not expose the toy to high temperatures, moisture or direct sunlight.
4. Do not immerse the toy in water, as this may damage the electrical components.

Caution

1. Do not touch the wheels when the vehicle is moving, as this may damage the vehicle.
2. This device may not cause harmful interference, and
3. this device must accept any interference received, including interference that may cause undesired operation.



FCC Statement

This equipment has been tested and found to comply with the limits for a Class B digital device, pursuant to Part 15 of the FCC Rules. These limits are designed to provide reasonable protection against harmful interference in a residential installation. This equipment generates uses and can radiate radio frequency energy and, if not installed and used in accordance with the instructions, may cause harmful interference to radio communications. However, there is no guarantee that interference will not occur in a particular installation. If this equipment does cause harmful interference to radio or television reception, which can be determined by turning the equipment off and on, the user is encouraged to try to correct the interference by one or more of the following measures:

- Reorient or relocate the receiving antenna.
- Increase the separation between the equipment and receiver.
- Connect the equipment into an outlet on a circuit different from that to which the receiver is connected.
- Consult the dealer or an experienced radio/TV technician for help.

This device complies with part 15 of the FCC Rules. Operation is subject to the following two conditions:

(1) This device may not cause harmful interference, and (2) this device must accept any interference received, including interference that may cause undesired operation.

Changes or modifications not expressly approved by the party responsible for compliance could void the user's authority to operate the equipment.

portable device statements

The device has been evaluated to meet general RF exposure requirement. The device can be used in portable exposure condition without restriction.