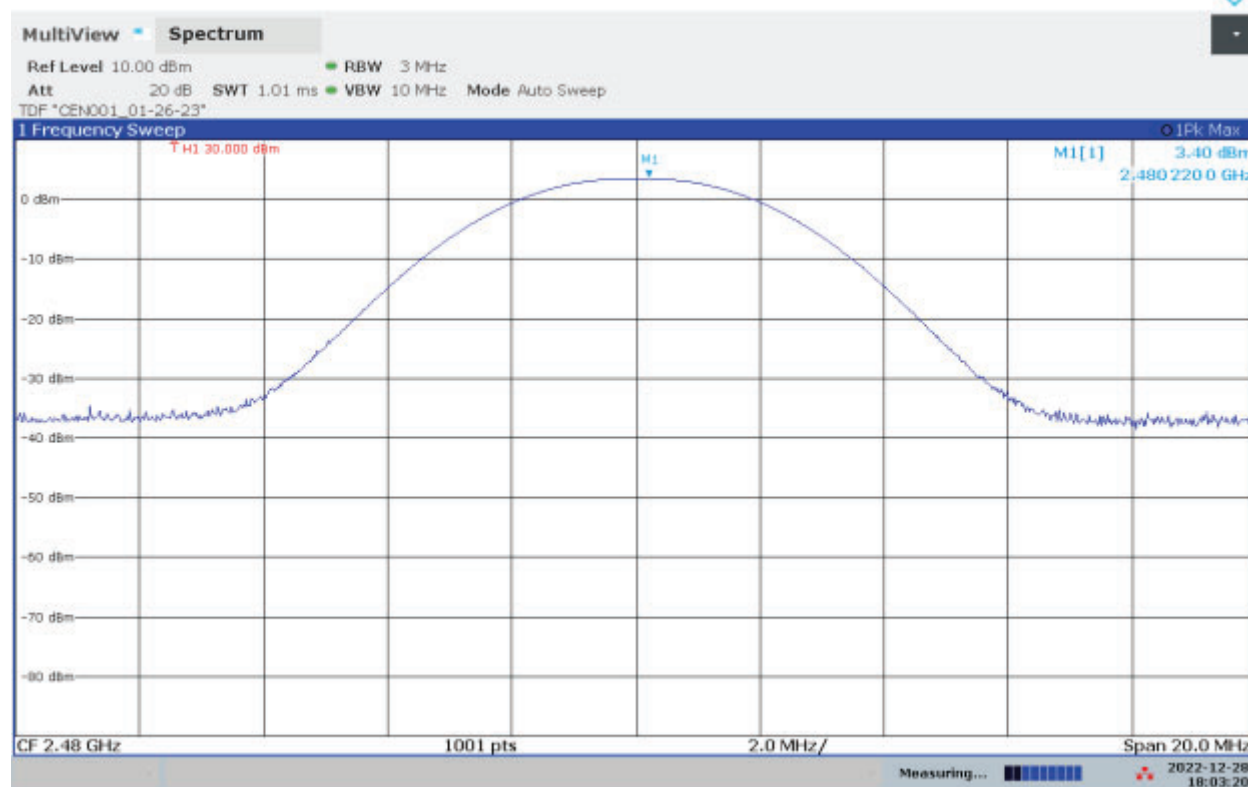


#### 6.4 Setup Photograph:



# High Channel Output Power



06:03:20 PM 12/28/2022

Frequency (MHz)	Conducted Output Power (dBm)	Antenna Gain (dBi)	EIRP (dBm)	ERP (dBm)	Limit, Conducted (dBm)	Margin (dB)
2402	2.63	-0.5	2.13	-0.02	30	-27.37
2442	3.21	-0.5	2.71	0.56	30	-26.79
2480	3.40	-0.5	2.90	0.75	30	-26.60

Note: See plots above. Attenuator was internally compensated as TDF.

Product Standard: FCC Part 15.247				Limit applied: See Report Section 6.5 Pretest Verification w/BB source: N/A			
Test Date	Test Personnel/ Initials	Supervising Engineer/ Initials	Input Voltage	Mode	Atmospheric Data		
					Temp C°	Relative Humidity %	Atmospheric Pressure mbar
12/28/2022	Vathana Ven <i>VSV</i>	Kouma Sinn <i>KPS</i>	Battery powered	Tx Low, Mid, High Channels	24	19	1014

Deviations, Additions, or Exclusions: None

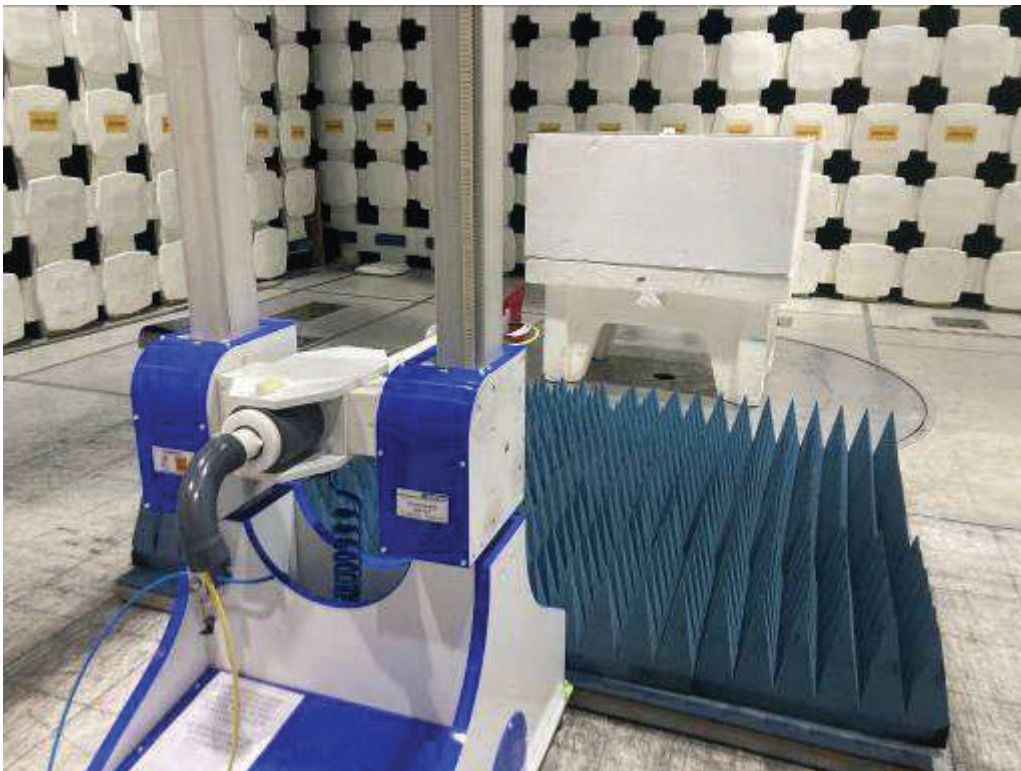
#### 8.4 Setup Photograph:





#### 9.4 Setup Photographs:

Radiated Emissions Test Setup (Worst-case)

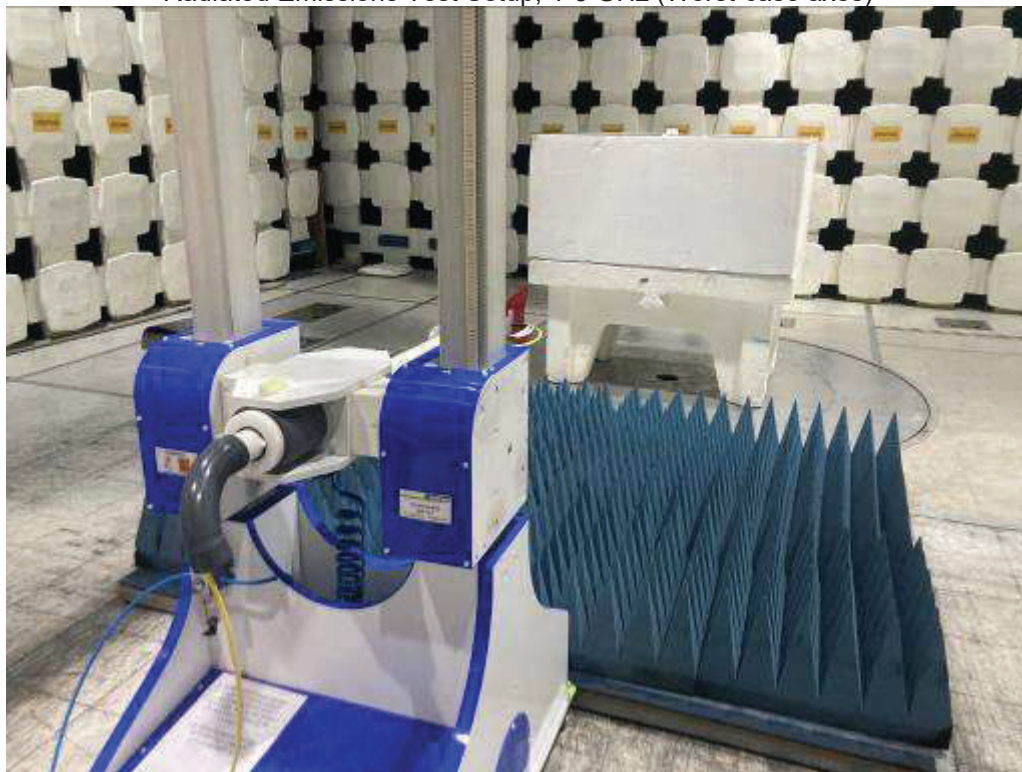


**10.4 Setup Photographs:**

Radiated Emissions Test Setup (Worst-case axes), 30-1000 MHz

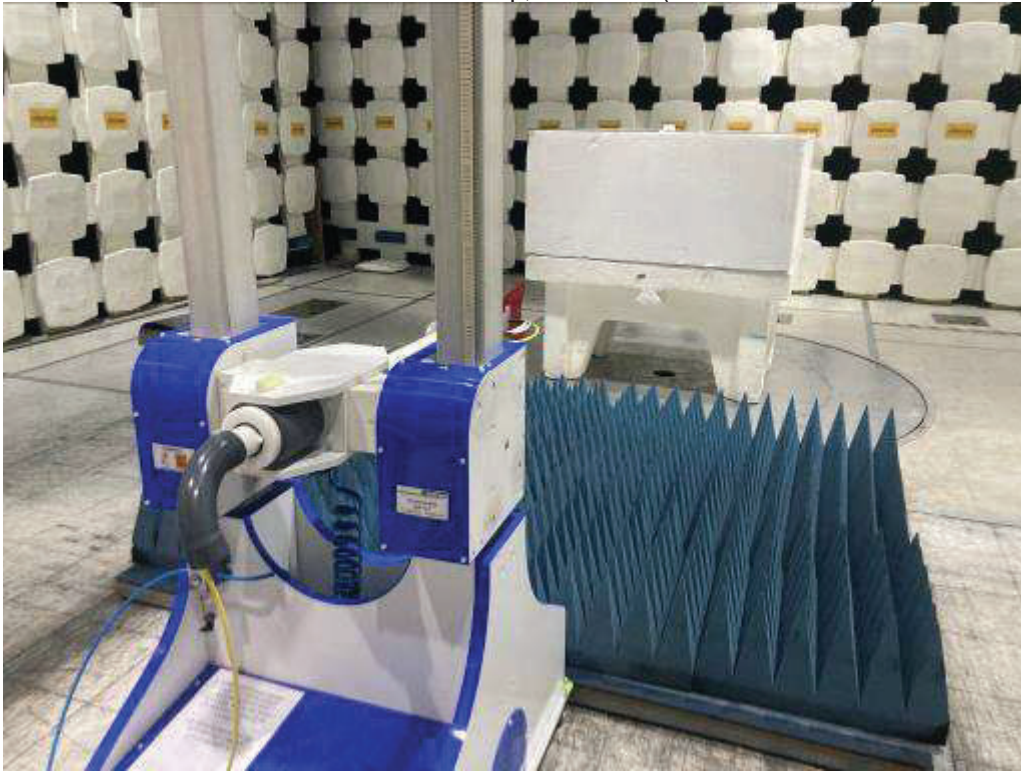


Radiated Emissions Test Setup, 1-3 GHz (Worst-case axes)

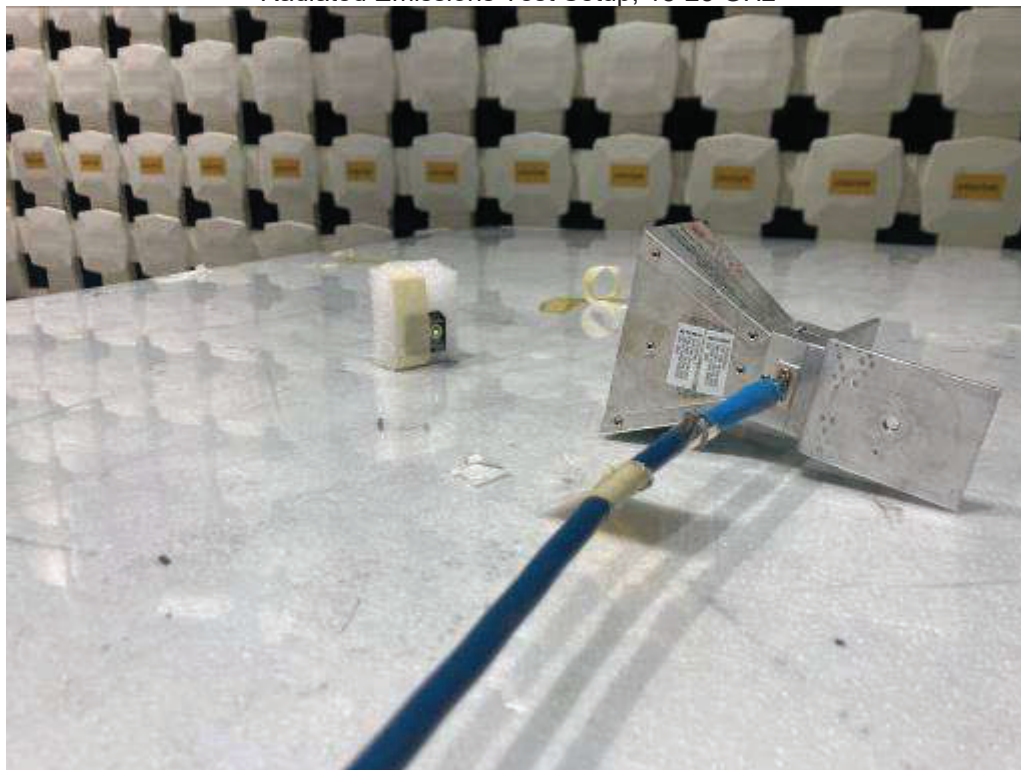




Radiated Emissions Test Setup, 1-18 GHz (Worst-case axes)



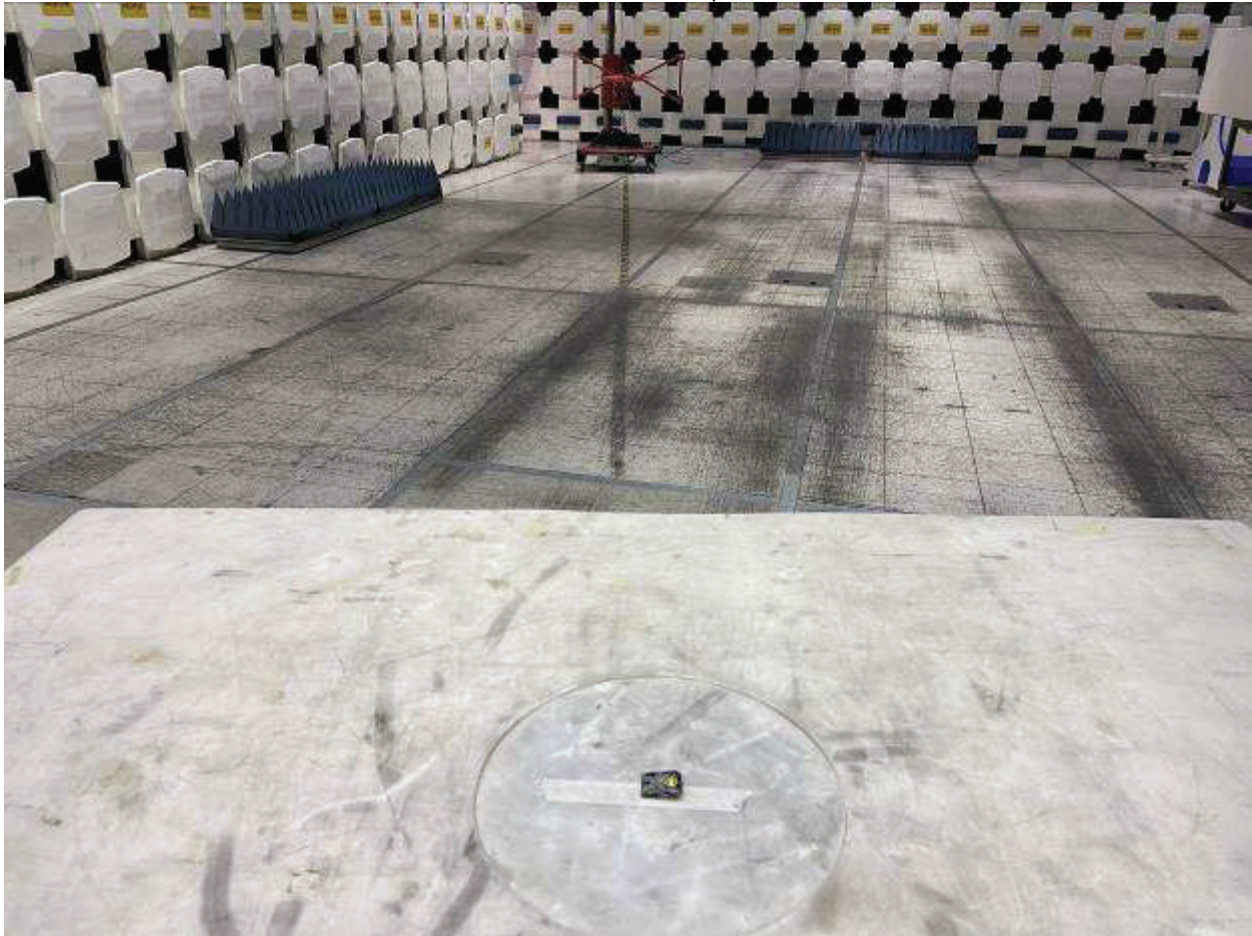
Radiated Emissions Test Setup, 18-25 GHz





**11.4 Setup Photographs:**

Radiated Emissions Test Setup, 30-1000 MHz



Radiated Emissions Test Setup, 1-13 GHz

