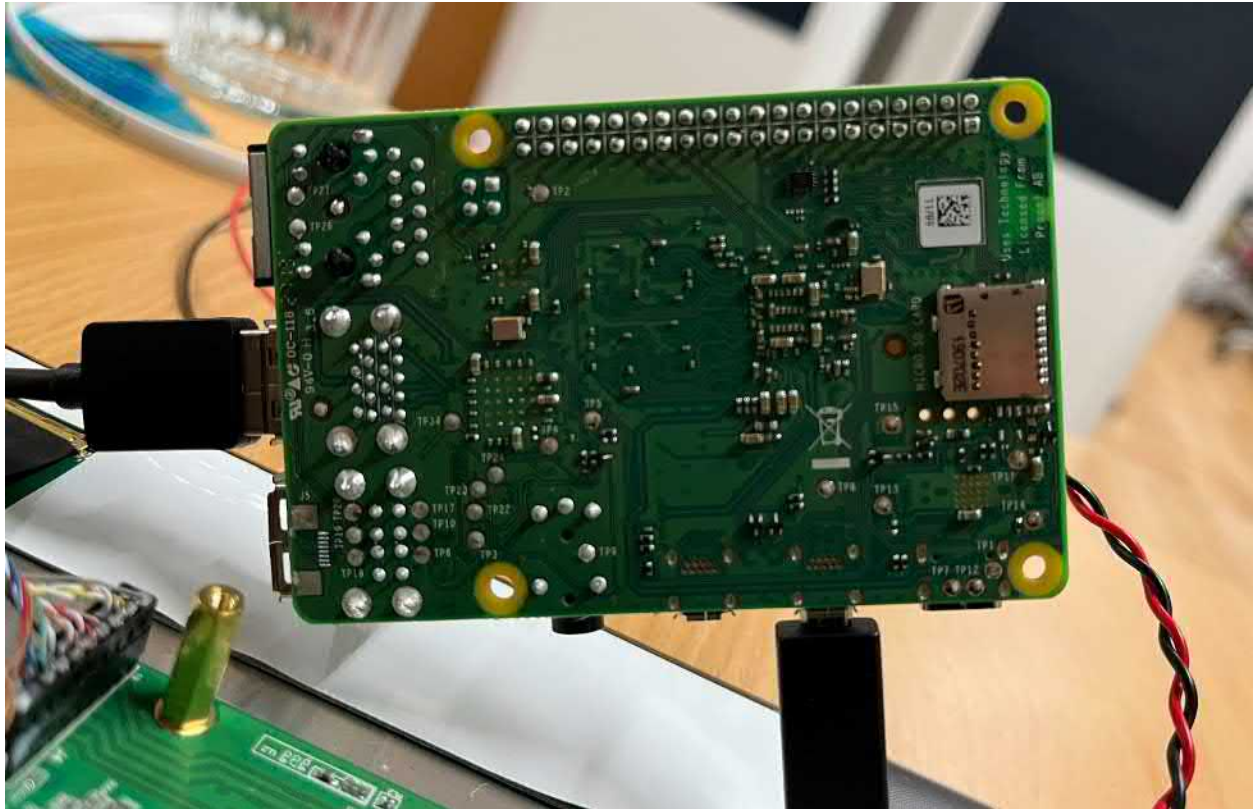


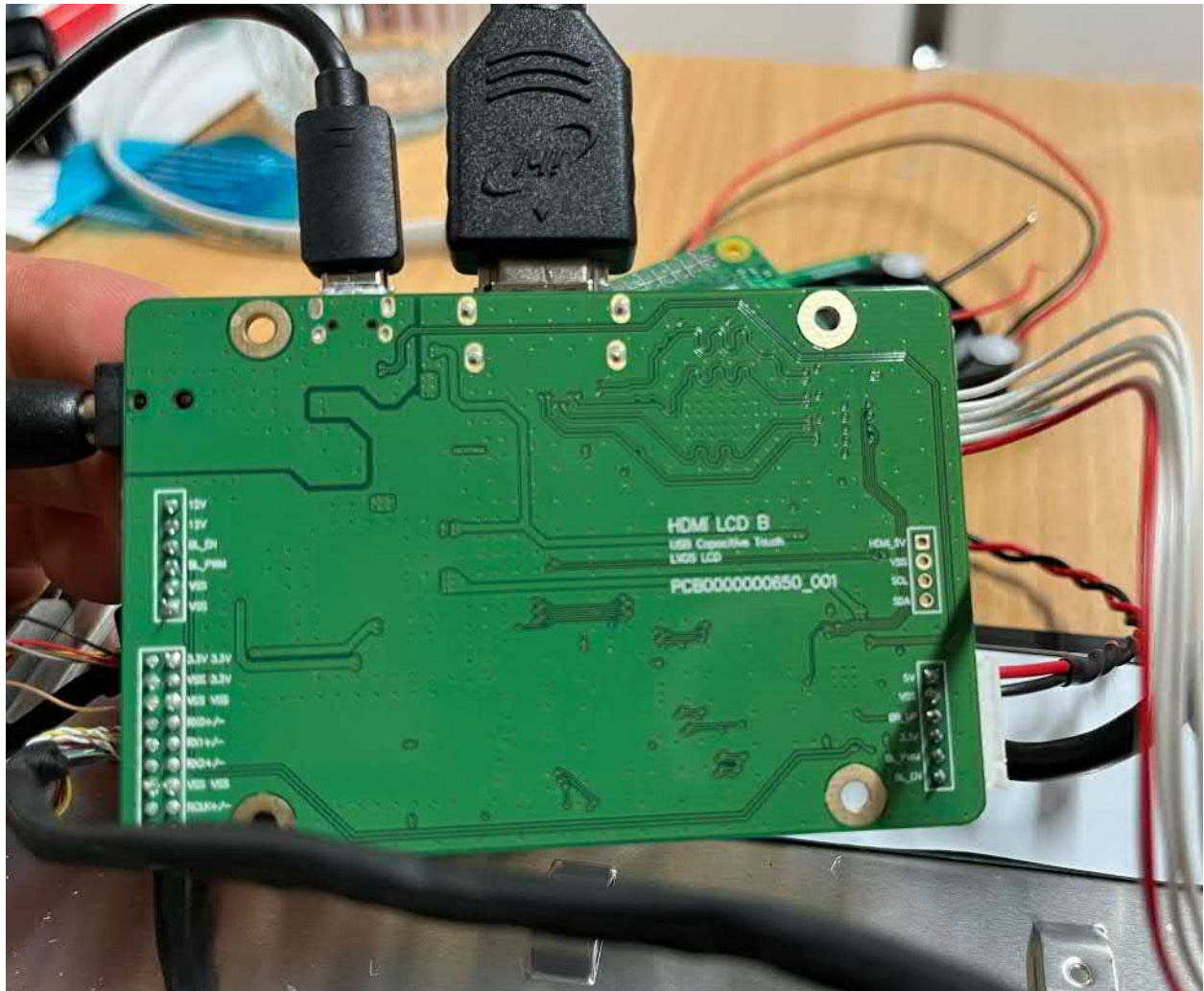
2. Connections



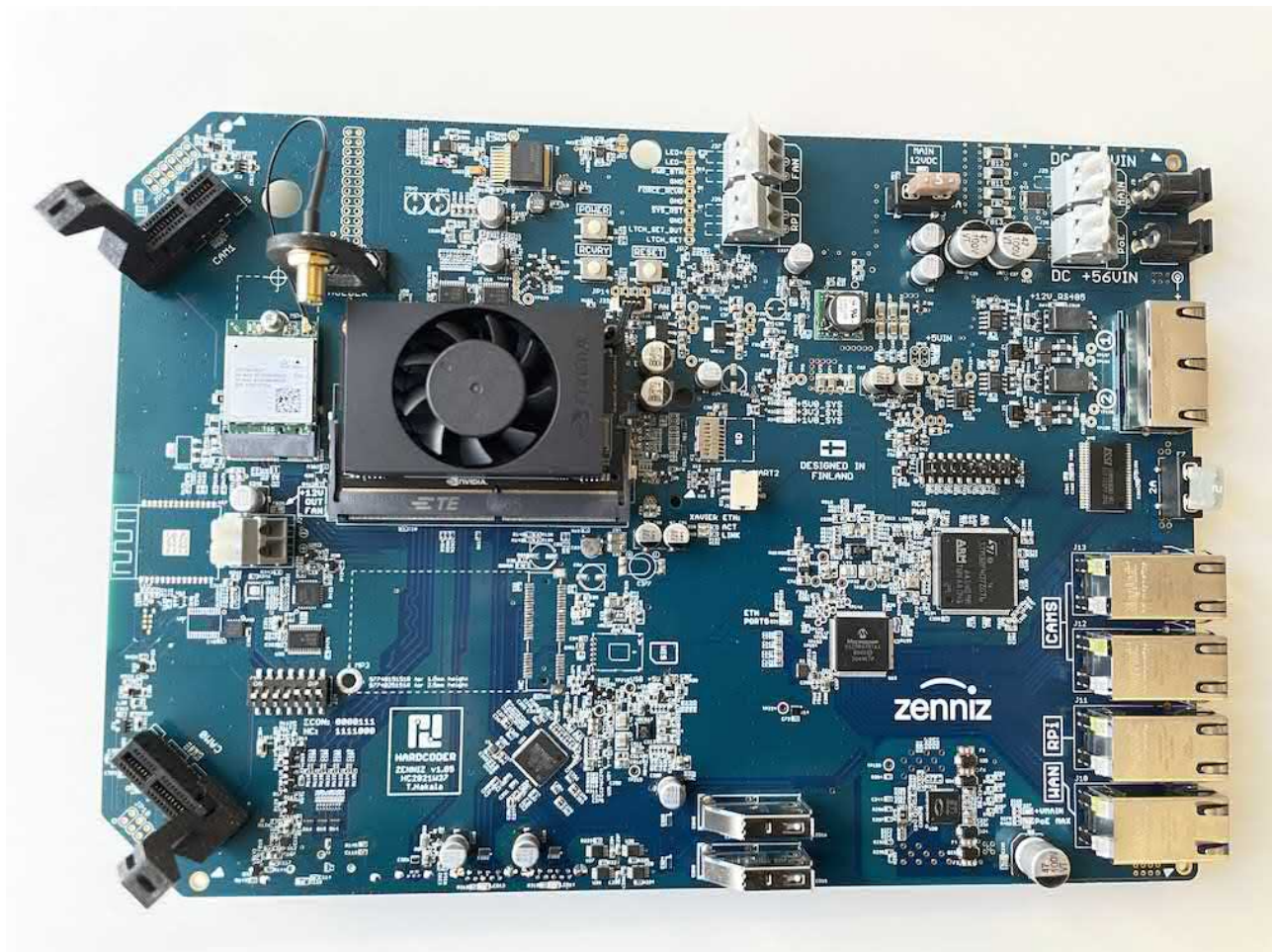
4. Raspberry Pi



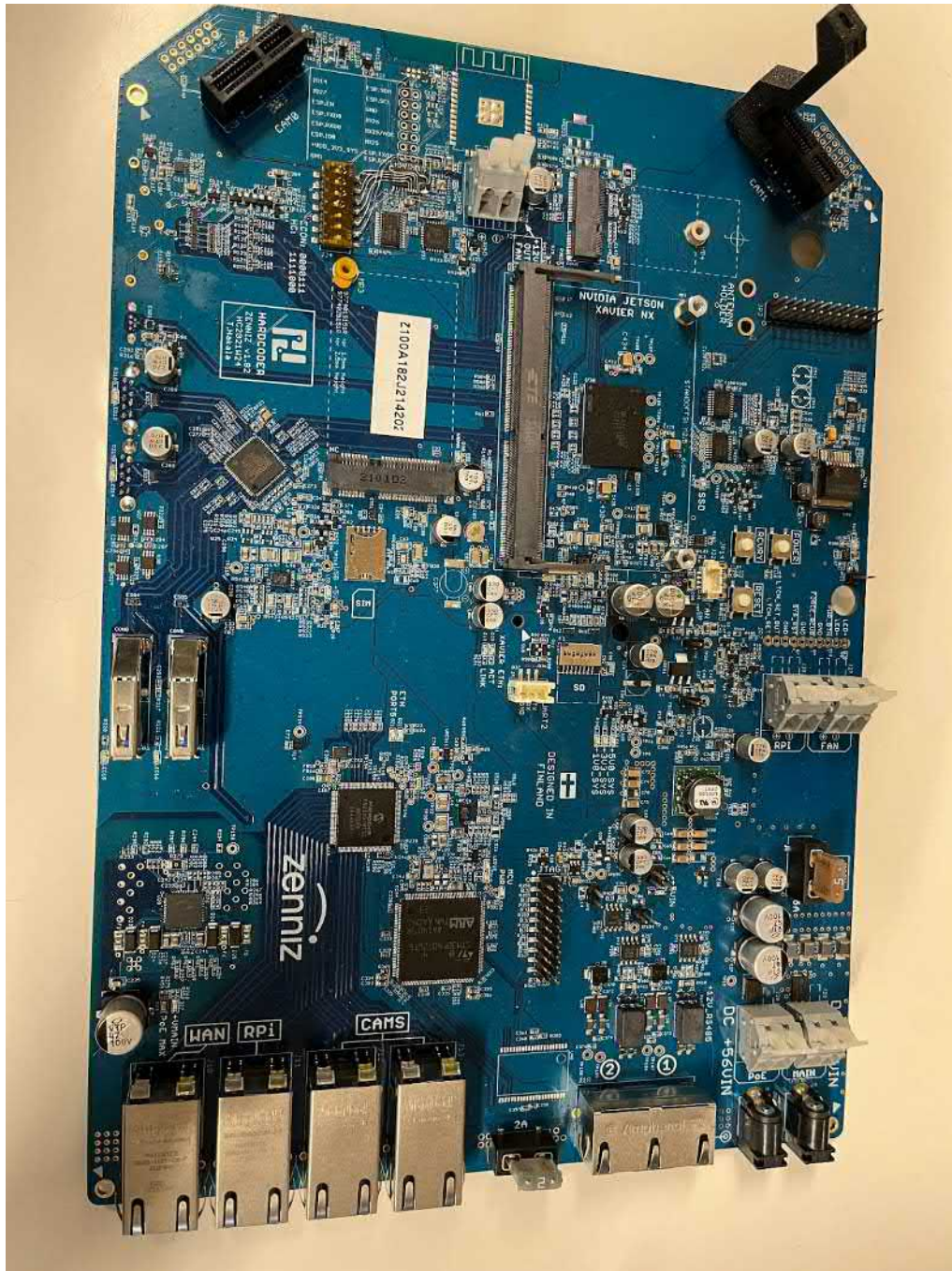
5. Screen PCB



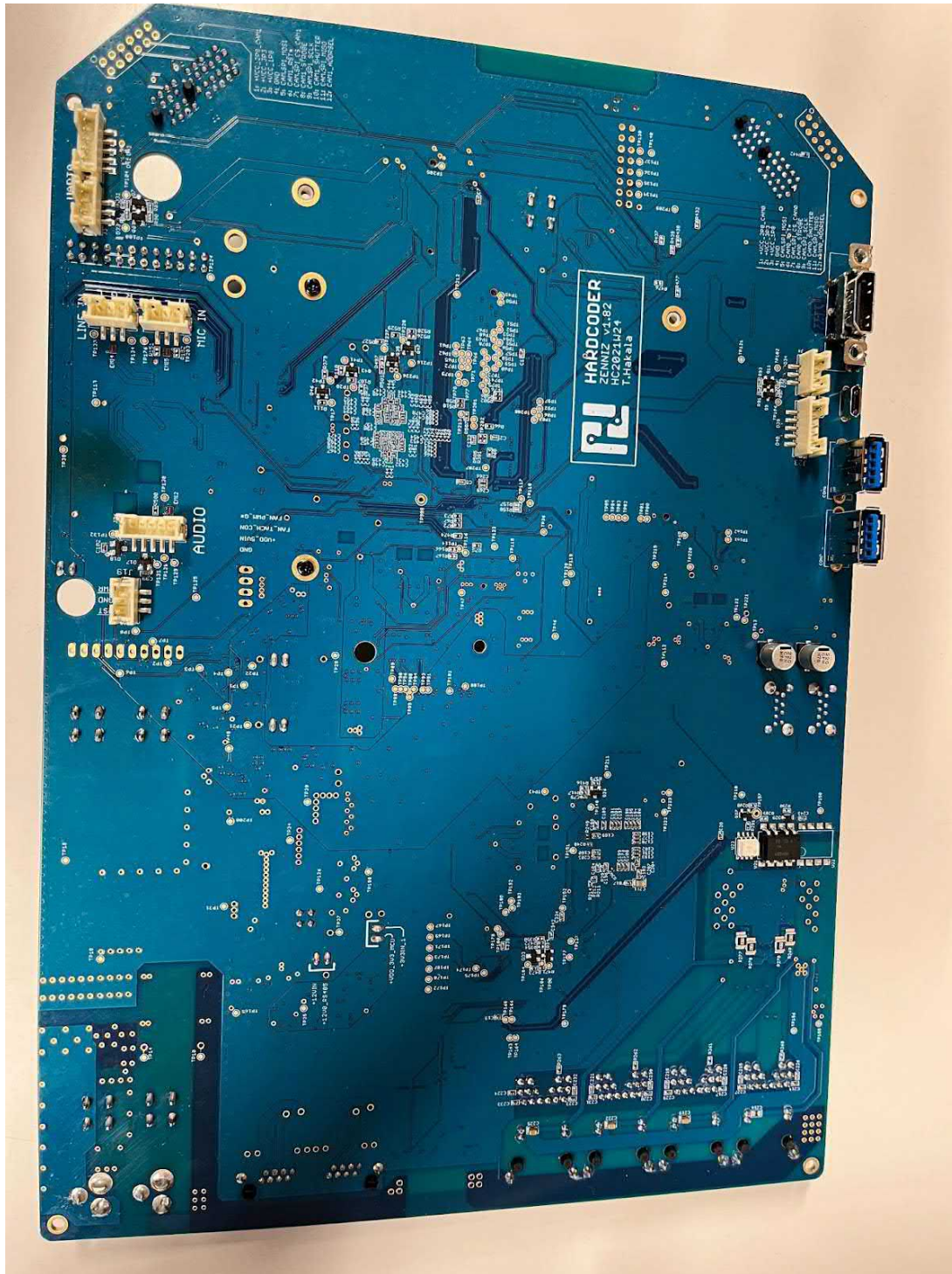
6. Screen PCB



7. Motherboard with jetson and its fan



8. Motherboard without jetson



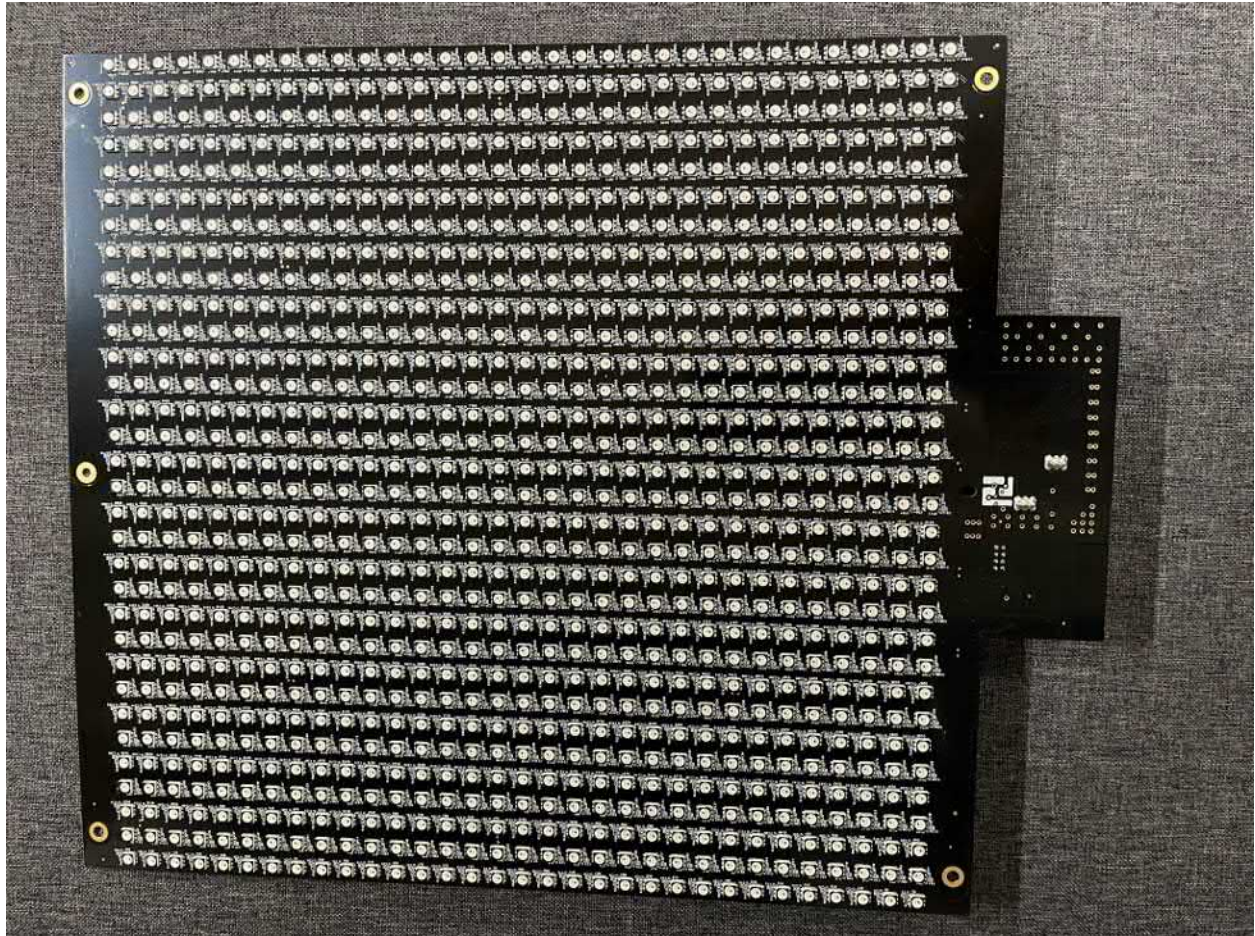
9. Back of the motherboard



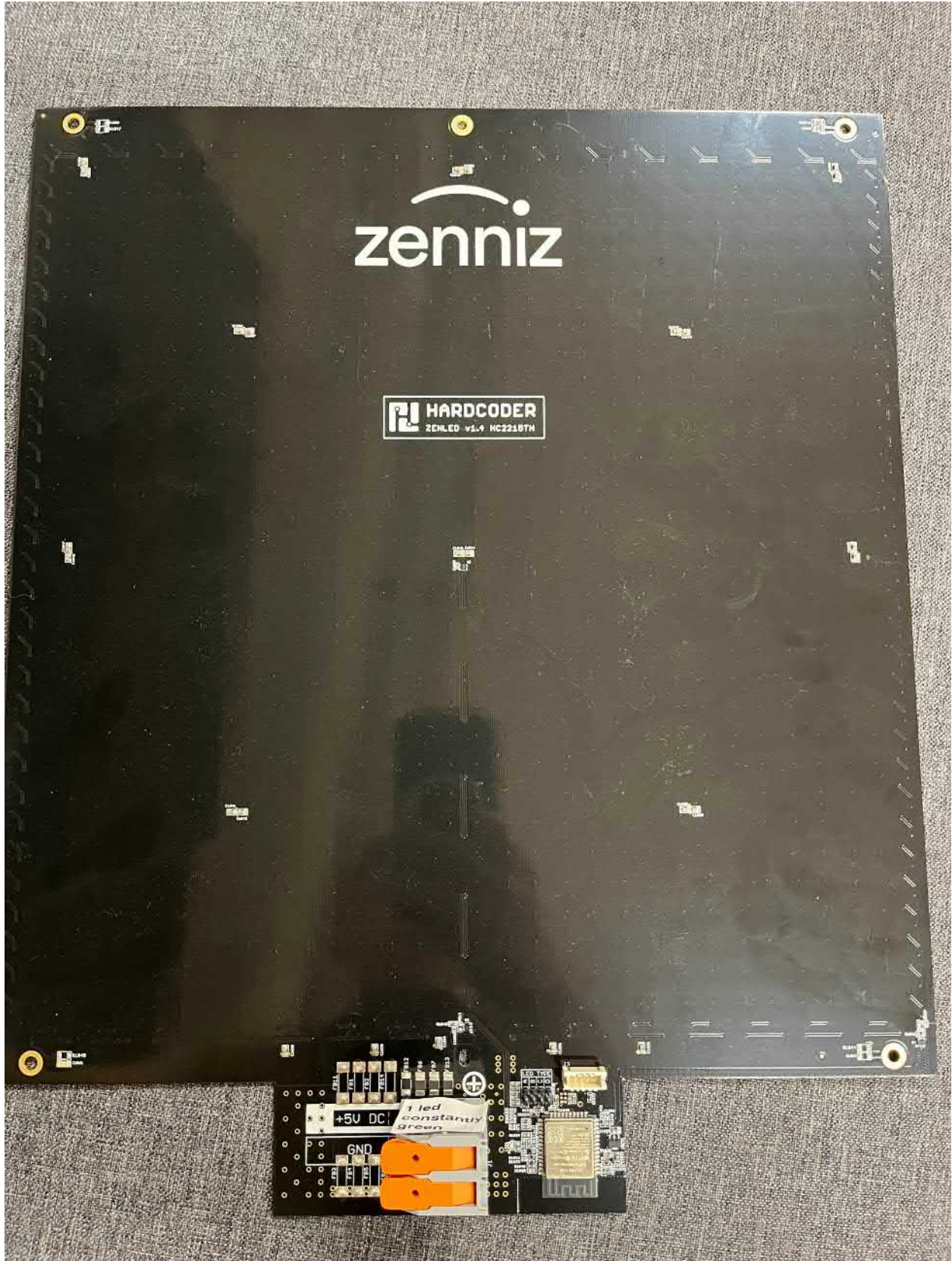
10. Jetson module



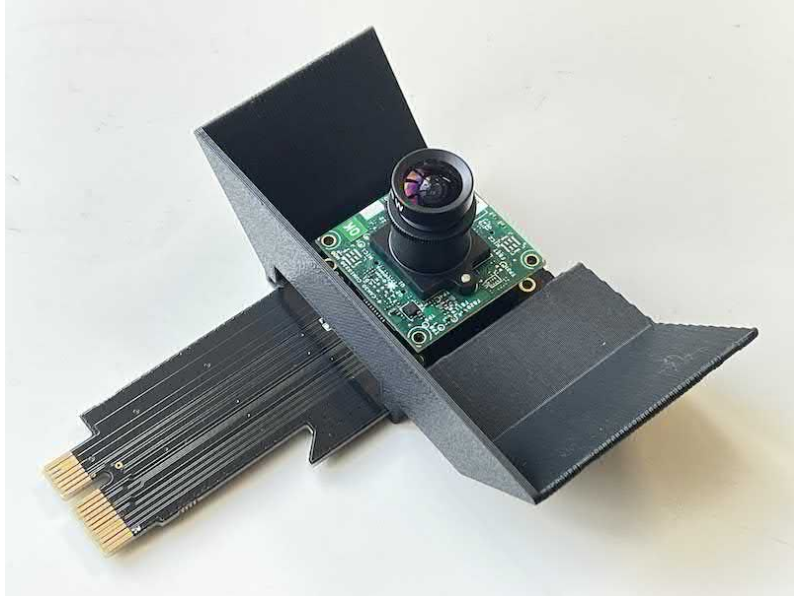
11. Back of jetson module



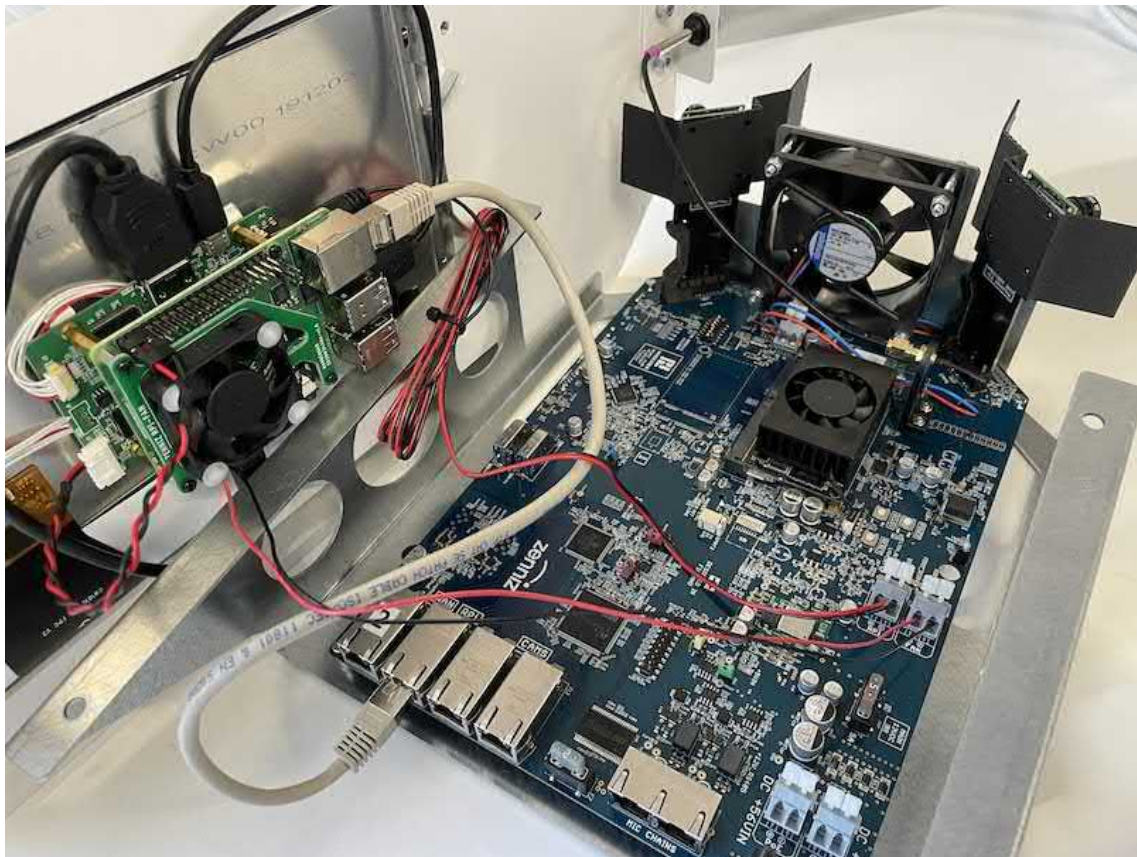
12. ZenLED V1.4



13. Back of the ZenLED V1.4



14. Device camera (2x on the device)



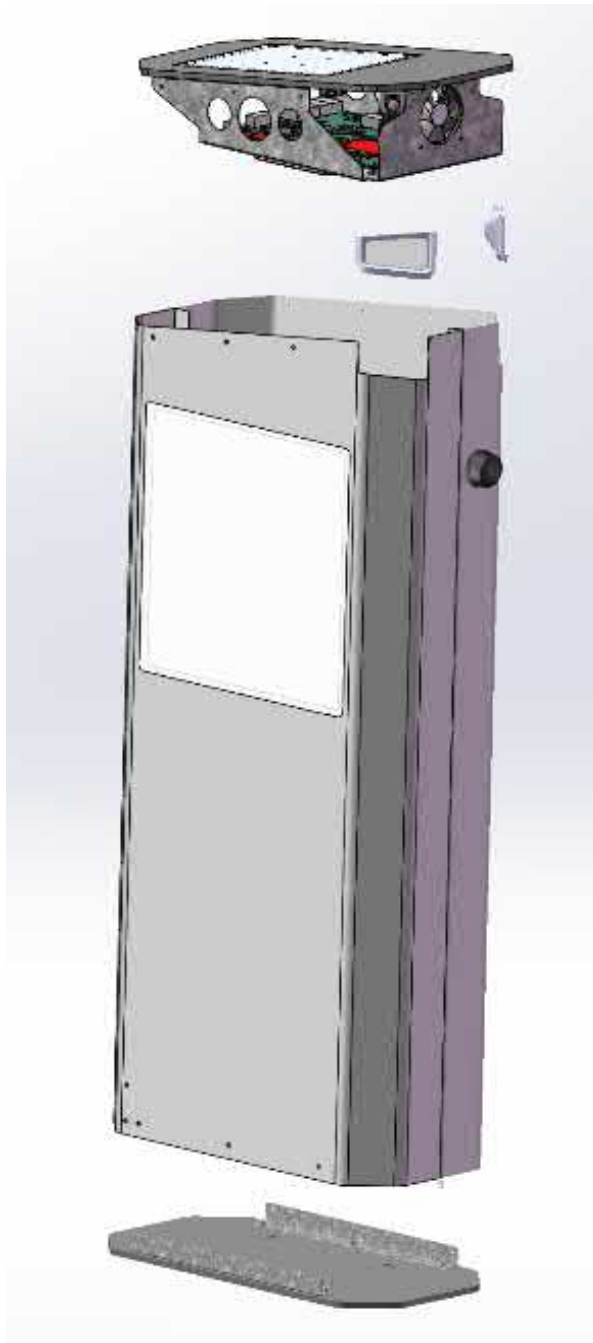
15. Connections of the motherboard, device camera and the user screen.



16. Connection of the powers for led panels, PoE and motherboard.



17. External ports. Top row from the left: Audio connectors, 2x RJ45 for the cameras
Bottom row from the left: RJ45 for device, power, 2x RJ45 for the microphones



18. Full product assembly