

# 深圳市云希科技有限公司

ShenZhen Yunxi Technology Co.,Ltd.

## *Antenna test Report*

Customer: 贻盛

Project Name:Mini one 02

RF Engineer: 吴工

Testing Date:2022-10-29

Operating band: WIFI



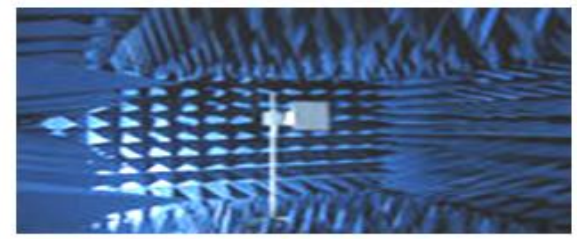
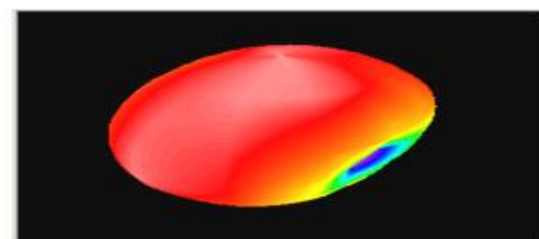
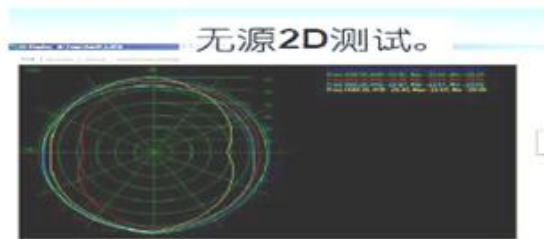
# 1.Project brief

NO.	ITEMS	DETAILS
1	工作频段 Operating band	WiFi
2	频率范围 Frequency range	(2400~2500MHz)
3	天线类型 Antenna Type	PIFA
4	天线材质及实现形式	天线采用 <b>FPC</b> 贴在壳里面
5	天线料号 Antenna part number	F1270B-1D20B-065-A
	天线料号 Antenna part number	
6	输入阻抗 Input Impedance	50（Ω）
7	增益 Gain	

RF	陈工
ME	邹工

## 3. Test system and equipment

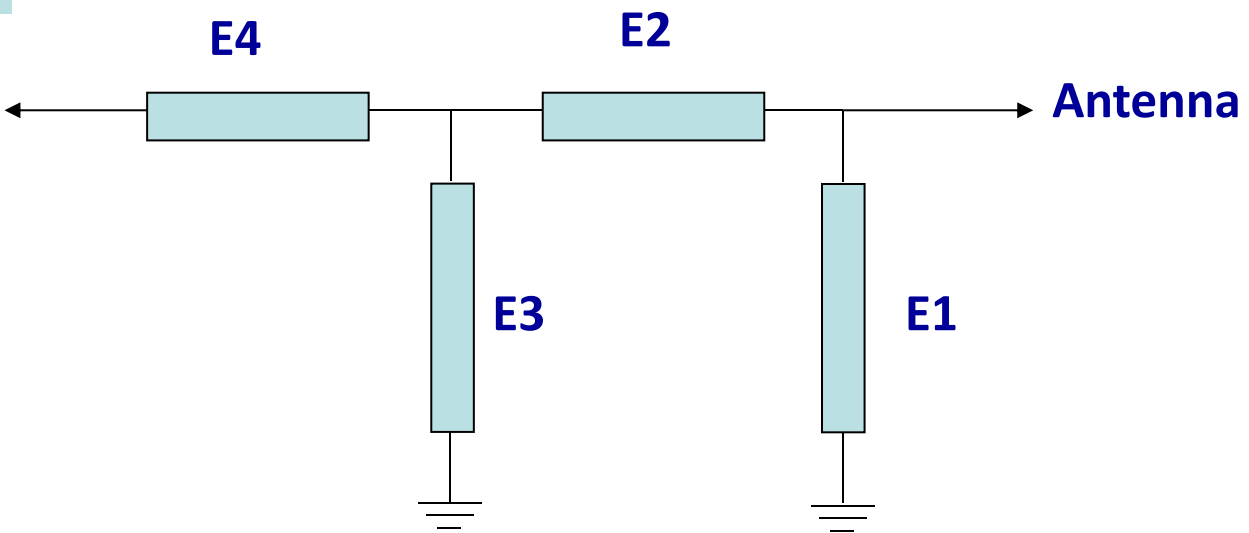
	测试项目	设备
1. S参数	1. 回波损耗 2. 驻波比	网络分析仪: HP E5071C/Agilent8753D
2. 耦合功率测试	1. 发射功率 2. 接收灵敏度	GSM 测试仪: Agilent 8960 LTE 测试仪: CMW500
3. 辐射模式与增益	1. 辐射模式 2. 天线增益	1. 暗室: 7x4x3 m (ETS-3D) 2. 网络分析仪: HP <b>Agilent8753ES</b>



# Matching Circuits

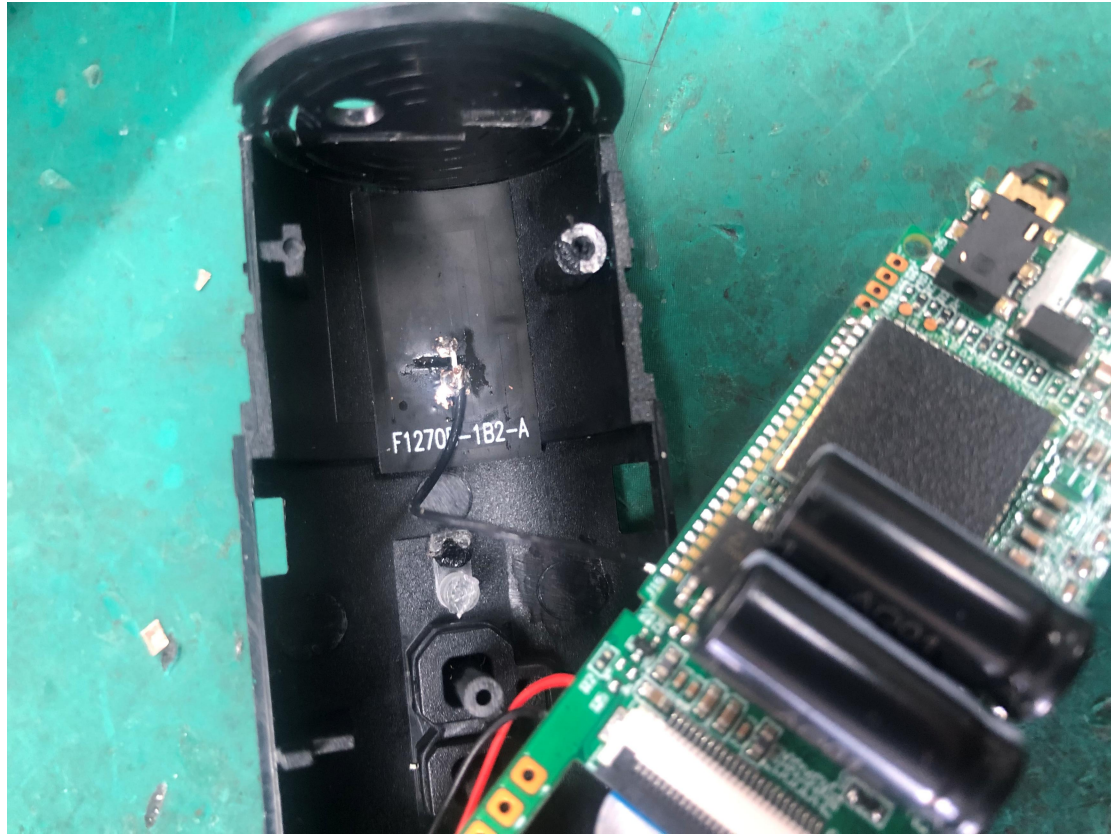
天线匹配

RF Module



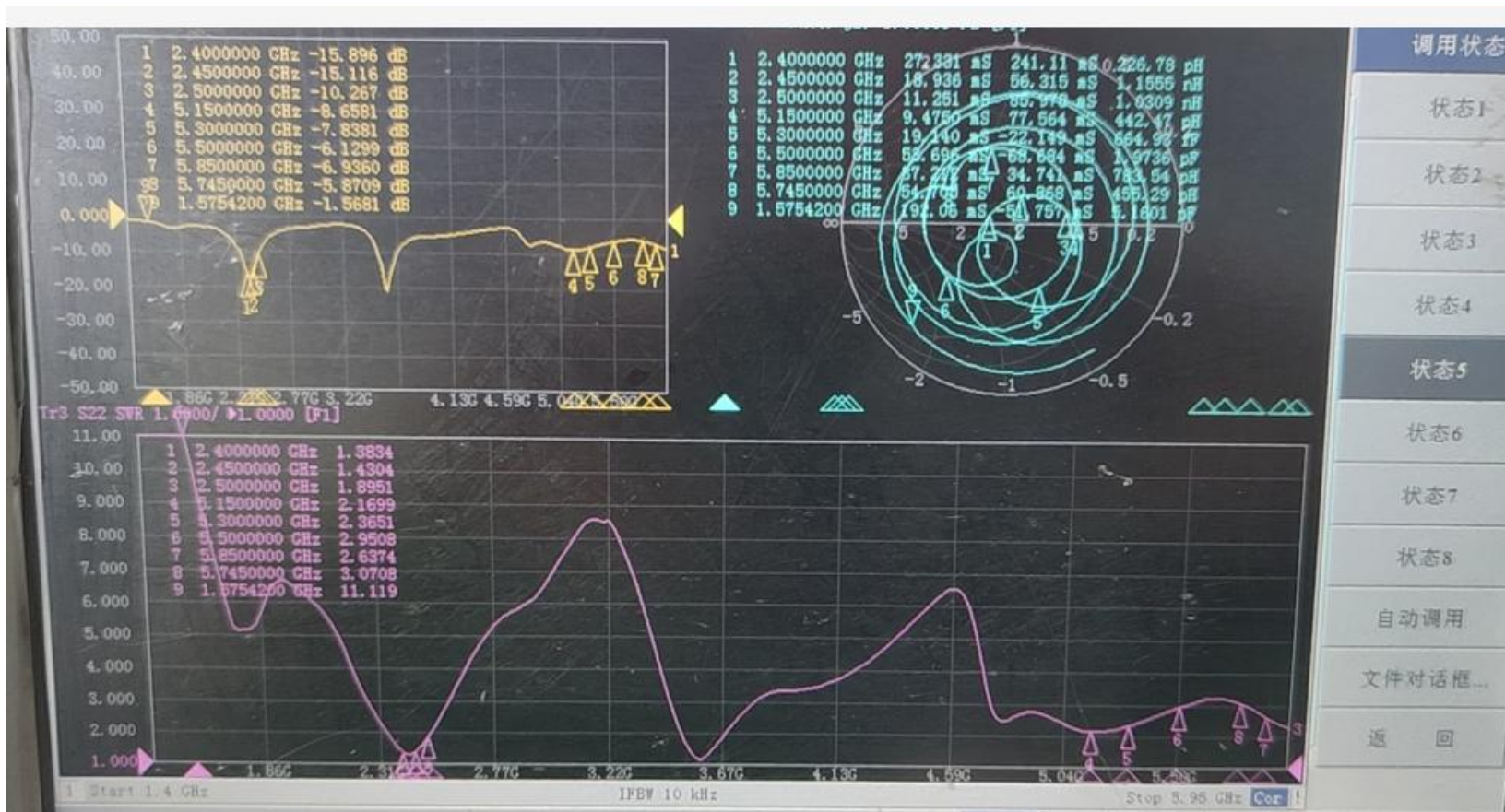
Element	Value	Vender
E1(0402)		
E2(0402)		
E3(0402)		
E4(0402)		

# 天线装配图



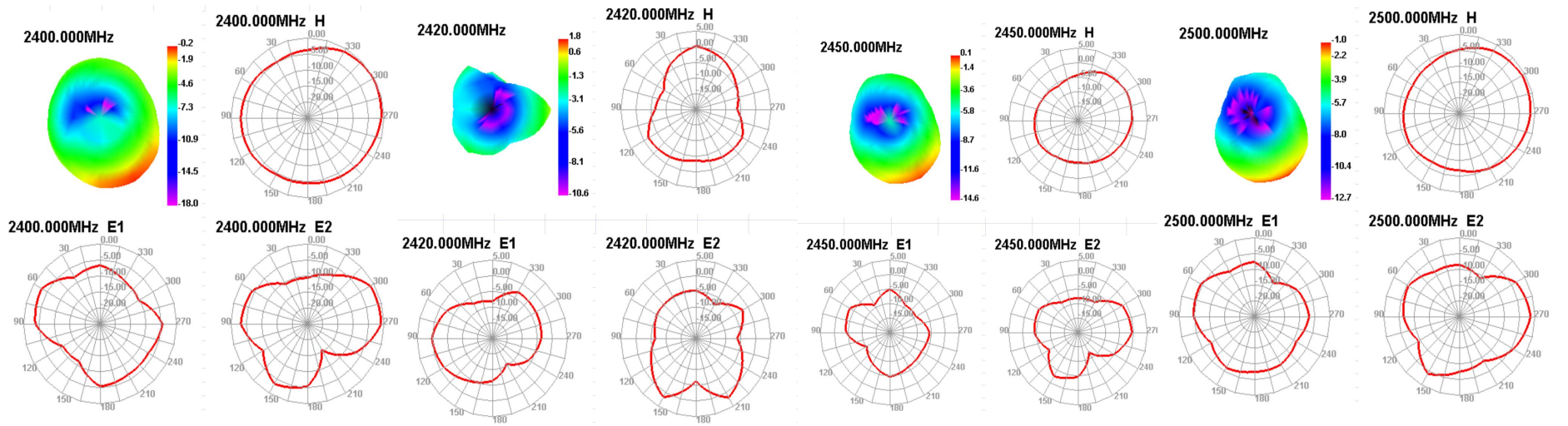


# 驻波图



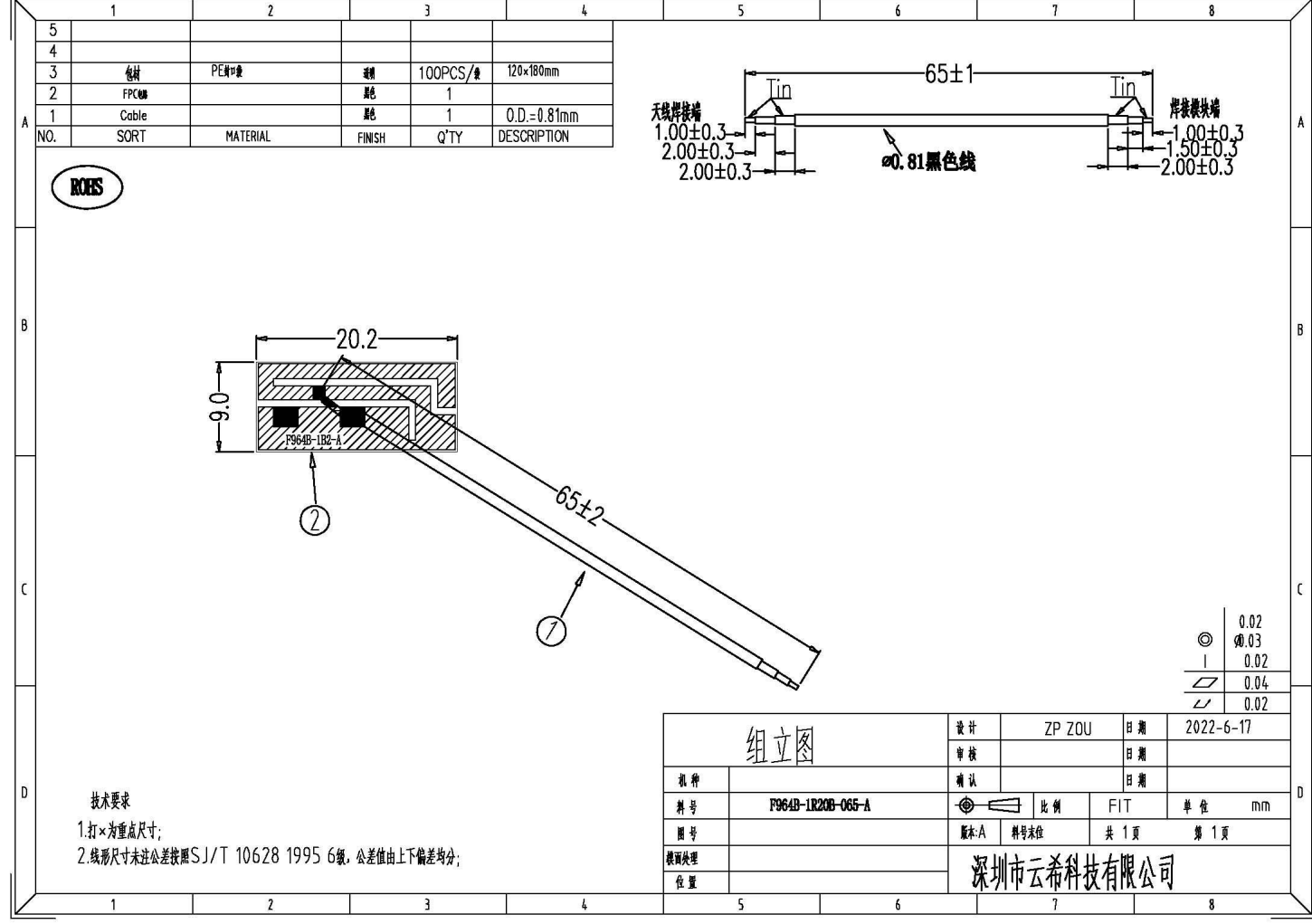
# 天线效率、增益

Passive Test For WIFI2.4										
Freq (MHz)	Effi (%)	Effi (dB)	Gain (dBi)	Gain (dBd)	UHS (%)	DHIS (%)	Max (dB)	Min (dB)	Attenut Hor	Attenut Ver
2400	41.74	-4.98	-0.16	-2.31	18.432	13.31	-0.16	-18.03	48.17	48.27
2410	40.89	-3.88	0.98	-1.17	23.708	17.185	0.98	-16.37	48.82	48.98
2420	49.63	-3.04	1.84	-0.31	28.356	21.275	1.84	-14.82	49.21	49.73
2430	36.04	-4.43	0.47	-1.68	20.481	15.564	0.47	-15.24	47.85	48.18
2440	32.29	-4.91	0.06	-2.09	18.158	14.132	0.06	-14.77	47.45	47.61
2450	38.38	-4.9	0.06	-2.09	17.977	14.402	0.06	-14.57	47.52	47.61
2460	44.28	-3.54	1.45	-0.7	24.15	20.131	1.45	-12.63	49.2	49.47
2470	33.99	-4.69	0.32	-1.83	18.34	15.647	0.32	-13.5	48.51	48.69
2480	37.16	-5.66	-0.64	-2.79	14.449	12.708	-0.64	-13.69	47.62	47.62
2490	36.05	-6.37	-1.42	-3.57	12.184	10.87	-1.42	-13.79	47.76	47.65
2500	35.98	-5.85	-1	-3.15	13.589	12.394	-1	-12.72	48.93	48.83





四：结构图纸





**备注：对此项目如有不清楚或有疑问的位置 请及时联系我**

