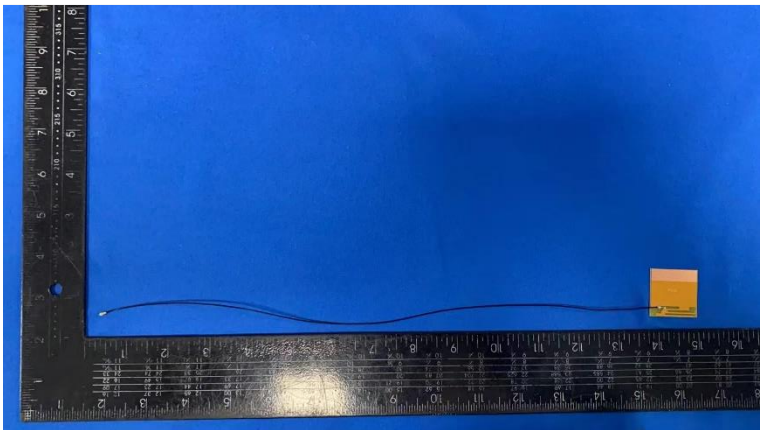


# 1. Antenna Description:

Antenna type	Internal antenna
Model	PC F2380E
Frequency range	2400-2500MHz
Manufacturer	Guangzhou Ark Electronics Co., Ltd
ANT Peak Gain	1.95 dBi

# 2. Antenna Photo:

Length :30.03mm  
Width:30.04mm



### 3. Test Equipment & Conditions

#### 3.1 Test instrument

VSWR is tested using Agilent E5071B connected to a hand mechanism, and the status is free space.

#### 3.2 Test environment and methods

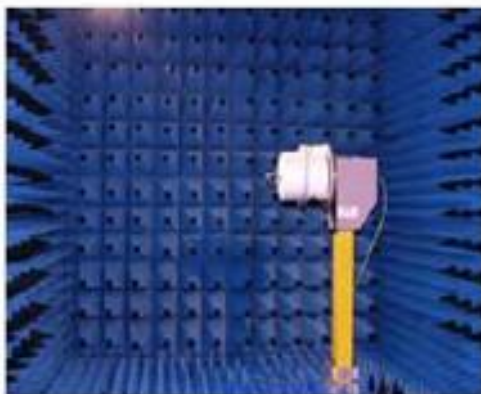
Dark room specifications: ETS-743

TD-SCDMA test equipment: StarPoint SP6010/Agilent 8960

LTE-TDD/FDD-SCDMA test equipment: StarPoint SP8011/CMW500

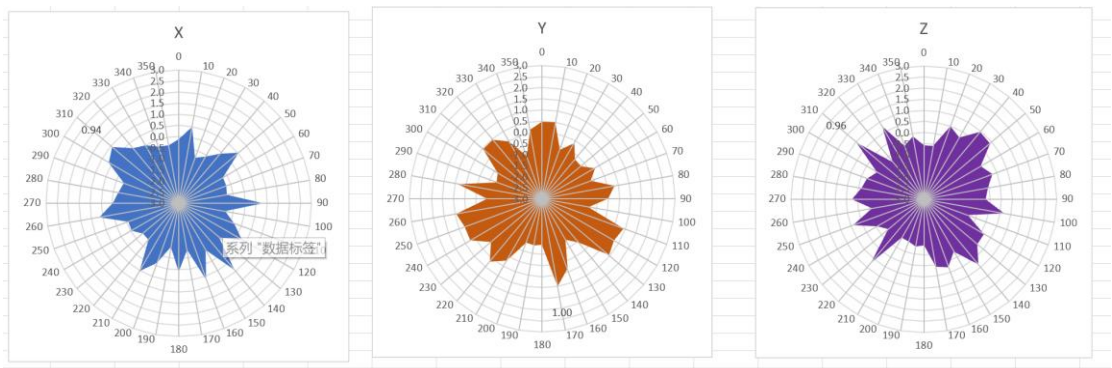
WCDMA/GSM/CDMA test equipment: Agilent 8960

Passive efficiency testing equipment: Agilent Technologies E5071B

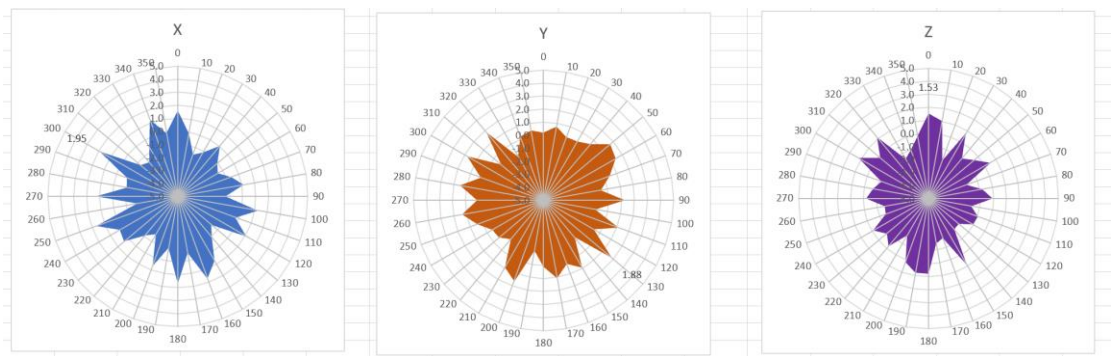


### 4 . Antenna Radiation Pattern

## 2400MHz



## 2450MHz



## 2500MHz

