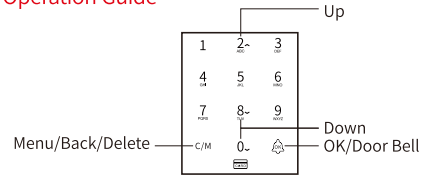
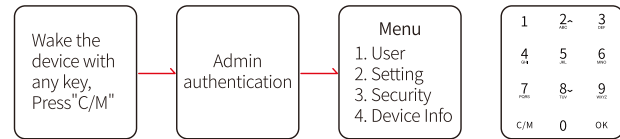


# Smart Glass Door Lock Operation Instructions

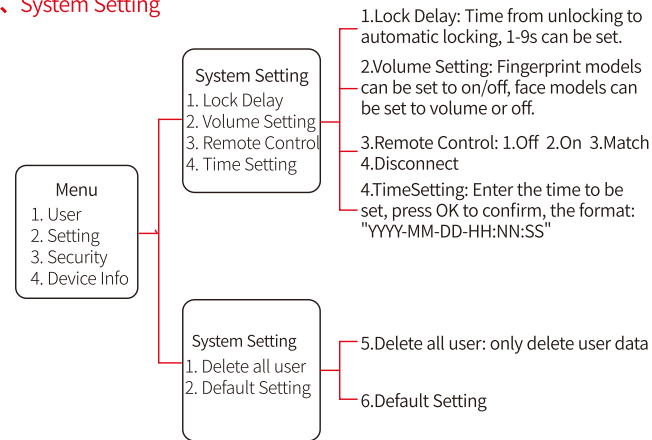
## 1. Key Operation Guide



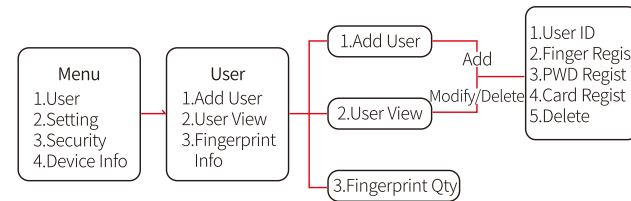
## 2. Enter the Menu



## 3. System Setting



## 4. Add, Modify, Delete User



### Note:

- 1.Before enroll a user, at least one of the following should be entered: administrator fingerprint, administrator card, administrator PWD
- 2.The face model supports registration of face, palm vein, modification of user ID/user name/department and other information

## 5. Anti-peep password function

Anti-peeping password identification, supports up to 16 virtual passwords (including actual passwords 6-8). When verifying the password, you can enter "false password + actual password + false password" to verify and unlock. For example, the actual password is 888888, you can enter 123888888456 to verify the unlocking

## 6. Keep the lock open

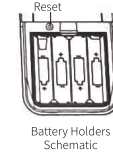
- ① Enable lock open mode: press 【9】 and then press 【OK】 key, the user identification will unlock and then open
- ② Exit lock open mode: press 【0】 and then press 【OK】 key

## 7. How to add a remote controller

Go to "Settings → Device/Remote Control", choose to add a remote controller, at this time it will prompt "Please press the remote control", within 8 seconds, press and hold the unlock button of the remote controller.  
Unlock: Long press the unlock button within the effective range (30m without obstacles), long press the lock button to lock

## 8. How to clear the admin

Open the battery cover of the device, as shown in the figure below, press and hold the reset button for more than 5 seconds, after hearing the second beep, will prompts "clear admin" on screen, press the [OK] button to clear the admin role.



## 9. \* The time attendance function (only for face models)

### 1. Dept. Setting:

" Settings → Dept. ", A total of 16 departments can be set and modify name.

### 2. Shift setting:

" Settings → Shift. ", A total of 24 shifts can be modified.

### 3. Attendance rule:

Can be set to allow late or leave early time.

### 4. Download Shift Report:

Insert the U disk, select "Download", and prompt "Download Successful", a ".XLS" file will be generated on the USB flash drive, which can quickly set the shift or modify the user name and department name in the form.

### 5. Upload Shift Report:

Insert U disk, select "Upload", after prompting "Upload Successful", the file of .XLS in U disk will be written to the device, the default for newly registered users is 01 shift.

## 6. Download Time Attendance Report:

Insert the U disk, choose to generate "report" or "original logs", set the output time range, and produce the corresponding summary table spread sheet(SSR) on a monthly basis, including summary table, shift information, original logs, abnormal statistics, attendance report.

**Note:** The format of the U disk must be FAT32, otherwise the device will not recognize the U disk.

# Smart Glass Door Lock (Instruction Manual)



Note: The picture is for reference only, please refer to the actual product

Please read the manual carefully before use and installation, and keep this manual for future reference

## Introduction to Smart Glass Door Lock

The product is newly upgraded and iterative, adopts an elegant and stylish design; the core adjustment of lower power consumption and long battery life, equipped with a new generation of clutch motor, protects the device with a longer service life; has a variety of high-end configurations: face recognition, semiconductor fingerprint sensor, IC card, mobile phone NFC, anti-peep password, attendance report, etc.; carefully create smart and convenient glass door locks, bringing you the fun of integrating technology and life.

### Face recognition unlocking (only face models support)

Faster algorithm recognition, faster unlocking. Infrared fill light, no fear of night, dual cameras, automatic switching between color and black and white images.

### Palm vein recognition and unlocking (only supported by some model)

A new generation of palm vein algorithm, which can be unlocked by raising your hand, making the identification more secure. Do not take off the mask and do not press fingerprints to achieve contactless unlocking.

### Semiconductor fingerprint sensor

Adopt semiconductor fingerprint sensor with higher sensitivity and faster recognition, it can effectively prevent fake fingerprint copying.

### IC card, mobile phone NFC unlock

Authorized IC card, users can easily swipe the card. Support Huawei, Honor, Xiaomi, OPPO, VIVO and other brand mobile phones, smart watches, smart bracelets NFC function, temporarily do not support IOS devices.

### Clutch motor protection

Double protection to avoid damage to gears and motor burnout, stable current, block speed, low power consumption and longer service life.

### Time Attendance function (only supported by some models)

Access control and time attendance two-in-one, professional attendance report (SSR) .

## Glass Lock Installation Scene



Left open  
and no door  
frame(Left  
open version)



Right open  
and no door  
frame(Right  
open version)



Opened on  
both sides  
and no door  
frame  
(Use ground  
lock on Left/  
Right side for  
fixed)



Opened on  
one side  
and no door  
frame, the  
other side is  
a wall or door  
frame  
(Left/Right  
open+ Side  
strip)



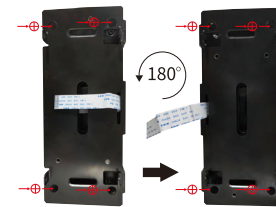
Opened on  
both sides  
with door  
frame  
(Split type+  
Bolt fix one  
side)



Opened on  
one side with  
frame, the  
other side is  
a wall or door  
frame  
(Split type +  
Side strip)

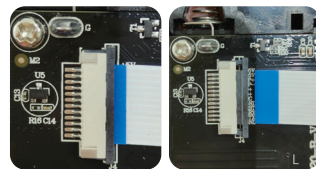
The picture is for reference only, please refer to the actual product

## How to adjust the left and right opening direction



- 1.Remove the screws on both sides of the master lock, remove the rear case, and then remove the 4 fixing screws on front case.
- 2.Separate the U-shaped bracket and the front shell, rotate the bracket 180° and install it.
- 3.The rear shell is also rotated 180° then install it, finally, the left and right exchange is completed.

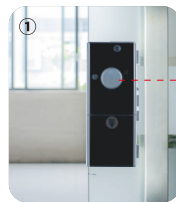
## How to disassemble and assemble the cable correctly



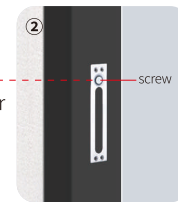
1. When removing the cable, first use your fingertips to gently push the locks on both sides out, and then pull out the cable.
2. When inserting the cable, the contact surface needs to face down. After inserting the cable, gently push the lock catch.

**Note:** need to pull and push gently to prevent the lock catch from breaking.

## Side strip install



Install the master lock according to the method on the previous page



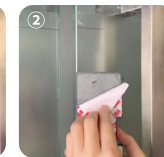
The magnet is aligned with the center of the manual knob and tightened with self-tapping screws

The picture is for reference only, please refer to the actual product

## Without Framed Glass Door Lock Installation Tutorial



Clean the glass surface and draw a marking line



Tear off the adhesive tape of the installation board and paste it according to the position of the marking line, flush with the edge.



Snap the master lock into the glass door.



Install the set screw and soft rubber plug

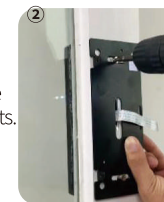
### Attention:

- 1.Glass door thickness 10-12mm.
- 2.The door gap is greater than 4mm and less than 15mm.
- 3.The installation height of the face model should be based on the full face of the user. It is recommended that the top of the glass lock be 1.3-1.5m above the ground.

## Wooden Doors and Framed Glass Doors Lock Installation Tutorial



cables. Use screws to fix the front panel through the metal plate behind the door, and then install the back shell.



The slave lock directly fixes the metal plate with self-tapping screws or rivets, and then installs the back shell.

### Attention:

Opened on both sides door, need to buy additional glass ground plug or latch.

The picture is for reference only, please refer to the actual product

## Help and Support



Website: [www.hysoon.com](http://www.hysoon.com)  
Email: [support@hysoon.com](mailto:support@hysoon.com)  
Fax: +86 (20) 6681 9622

If you have any questions about our products , please feel free to contact with us via email or our official website.Thanks and Best Regards!

## FCC WARNING

This device complies with part 15 of the FCC Rules. Operation is subject to the following two conditions: (1) this device may not cause harmful interference, and (2) this device must accept any interference received, including interference that may cause undesired operation.

Any changes or modifications not expressly approved by the party responsible for compliance could void the user's authority to operate the equipment.

NOTE: This equipment has been tested and found to comply with the limits for a Class B digital device, pursuant to Part 15 of the FCC Rules. These limits are designed to provide reasonable protection against harmful interference in a residential installation. This equipment generates, uses and can radiate radio frequency energy and, if not installed and used in accordance with the instructions, may cause harmful interference to radio communications. However, there is no guarantee that interference will not occur in a particular installation.

If this equipment does cause harmful interference to radio or television reception, which can be determined by turning the equipment off and on, the user is encouraged to try to correct the interference by one or more of the following measures:

- Reorient or relocate the receiving antenna.
- Increase the separation between the equipment and receiver.
- Connect the equipment into an outlet on a circuit different from that to which the receiver is connected.
- Consult the dealer or an experienced radio/TV technician for help.

To maintain compliance with FCC's RF Exposure guidelines, This equipment should be installed and operated with minimum distance between 20cm the radiator your body: Use only the supplied antenna.