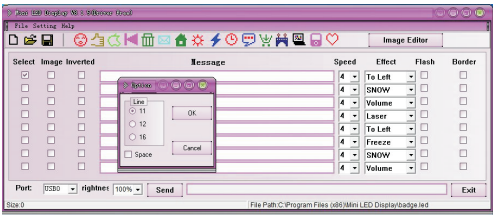


Instruction for LED name badge

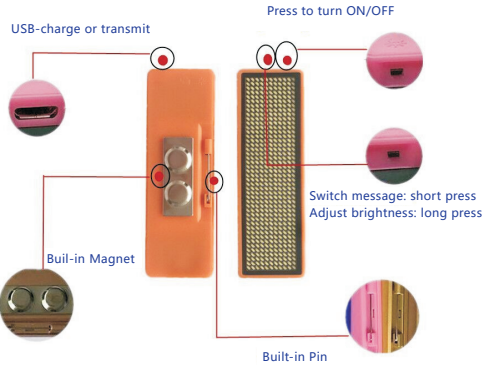
- 1. Put the CD into computer CDROM. ( You can download the software through this link:  
https://www.lesun-led.com/software/led-badge-9.18-english-version.rar)
- 2. Run the file “install.exe”
- 3. Select one of “Easy/ Professional/Help”
- 4. There will be 2 icons on desktop:
  - 1) Mini LED Display—Easy Program  
It supports Chinese/English / Korean / Japanese.  
Message font and size is automatic
  - 2) BMP Badge—Professional Program  
It supports Global Language editing. (Software support Chinese/English/Korean /Japanese)  
Users can manually edit message font, size, image, animation, etc.



- 5. Run the Easy Program (Mini LED Display)  
Settings—Language—Select English/Spanish/Japanese/Korean/Chinese  
Settings—Options—Tick 11 for Model# SB1144,
- 6. Use USB cable connect badge to computer.  
Drop-down left bottom“Port”window—select “USB0” (Usually it automatically USB O)
- 7. Edit and send message  
Input 1-8 messages as per your demand  
Select display speed—level 1 lowest to level 8 fastest)  
Select display effect—Freeze, Scroll, Laser, Snow, Animation, etc.  
Select the message you want to display, click “Send”



- 8. LED Badge display the message  
M1-8 is circular display all selected messages  
Press message key is fixed display current message.
- 9. If need more function, use Professional Program to edit message manually.



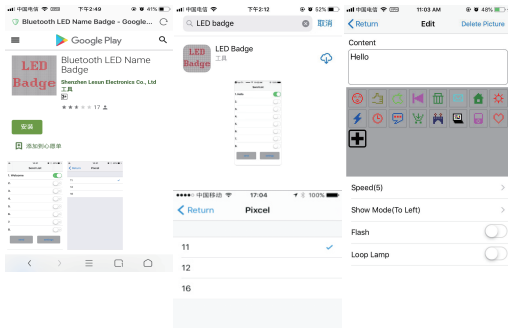
Model: NB1144 FCC ID: 2A8UNLEDBADGENB1144

This device complies with part 15 of the FCC rules. Operation is subject to the following two conditions:  
(1) this device may not cause harmful interference, and (2) this device must accept any interference received, including interference that may cause undesired operation.  
NOTE: The manufacturer is not responsible for any radio or TV interference caused by unauthorized modifications or changes to this equipment. Such modifications or changes could void the user’s authority to operate the equipment.

RF Exposure statement  
This equipment complies with FCC RF radiation exposure limits set forth for an uncontrolled environment.  
This transmitter must not be co-located or operating in conjunction with any other antenna or transmitter.

Instruction for Bluetooth Led Badge

- ① Turn on Cellphone Bluetooth Function
- ② Scan the QR Code and install App or search “LED Badge” in App Store; or search“Bluetooth LED Name Badge” in Google Play
- ③ Run App



- ④ Settings: Tick“11”for NB1144
- ⑤ Click the message and edit
- ⑥ Turn on the bluetooth on badge: Turn on the badge, then press the On/Off button again, then bluetooth icon comes out (picture 1) (Automatic pairing, no need to choose)



Picture 1

- ⑦ Send the message
- ⑧ LED Badge show the message



NOTE: This equipment has been tested and found to comply with the limits for a Class B digital device, pursuant to part 15 of the FCC Rules. These limits are designed to provide reasonable protection against harmful interference in a residential installation. This equipment generates uses and can radiate radio frequency energy and, if not installed and used in accordance with the instructions, may cause harmful interference to radio communications. However, there is no guarantee that interference will not occur in a particular installation. If this equipment does cause harmful interference to radio or television reception, which can be determined by turning the equipment off and on, the user is encouraged to try to correct the interference by one or more of the following measures:  
- Reorient or relocate the receiving antenna.  
- Increase the separation between the equipment and receiver.  
-Connect the equipment into an outlet on a circuit different from that to which the receiver is connected.  
-Consult the dealer or an experienced radio/TV technician for help.