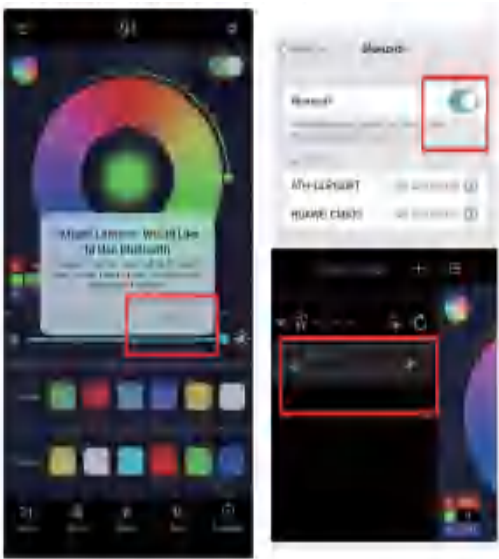


75x105mm



05

Customer Service

- Warranty: 12-Month Limited Warranty
- Support: Lifetime Technical Support

FCC and ISED Canada Statement

Warning: Changes or modifications to this unit not expressly approved by the party responsible for compliance could void the user's authority to operate the equipment.

NOTE: This device complies with part 15 of the FCC Rules. Operation is subject to the following two conditions: (1) This device may not cause harmful interference, and (2) this device must accept any interference received, including interference that may cause undesired operation.

FCC Statement: This equipment has been tested and found to comply with the limits for a Class B digital device, pursuant to part 15 of the FCC Rules.

These limits are designed to provide reasonable protection against harmful interference in a residential installation. This equipment generates, uses and can radiate radio frequency energy and, if not installed and used in accordance with the instructions, may cause harmful interference to radio communications. However, there is no guarantee that interference will not occur in a particular installation. If this equipment does cause harmful interference to radio or television reception, which can be determined by turning the equipment off and on, the user is encouraged to try to correct the interference by one or more of the following measures:
—Reorient or relocate the receiving antenna.
—Increase the separation between the equipment and receiver.
—Connect the equipment into an outlet on a circuit different from that to which the receiver is connected.
—Consult the dealer or an experienced radio/TV technician for help.

RF exposure compliance statement: This device has been evaluated to meet the general RF exposure requirement

This device complies with Part 15 of FCC Rules and contains license-exempt transmitter(s) that comply with innovation, Science and Economic Development Canada's license-exempt RSS Standard(s). Operation is subject to the following two conditions:
(1) This device may not cause interference; and
(2) This device must accept any interference received, including interference that may cause undesired operation
The digital apparatus complies with Canadian CAN ICES 3 (B)/NMB 3 (B).
This device meets the exemption from the routine evaluation limits in section 2.5 of RSS 102 and compliance with RSS 102 RF exposure, users can obtain Canadian information on RF exposure and compliance.

Cet appareil est conforme à la partie 15 des règles de la FCC et contient un émetteur exempté de licence qui répond aux normes du CNR exempté de licence d'innovation, sciences et développement économique Canada]. Les opérations sont soumises aux deux conditions suivantes:
(1) L'appareil ne peut pas causer d'interférence; Et
(2) Cet appareil doit accepter toute interférence reçue, y compris celles qui peuvent entraîner un fonctionnement accidentel
Cet appareil numérique est conforme à la norme canadienne can ICES 3 (b) / NMB 3 (b).
L'appareil est conforme à l'exemption des limites d'évaluation de routine de la section 2.5 du CNR 102 et est conforme au CNR 102 sur l'exposition aux RF, où les utilisateurs peuvent obtenir des renseignements canadiens sur l'exposition aux RF et la conformité.

User Manual

Model: HYD-5501300A
Outdoor Wall Light

Safety Instructions

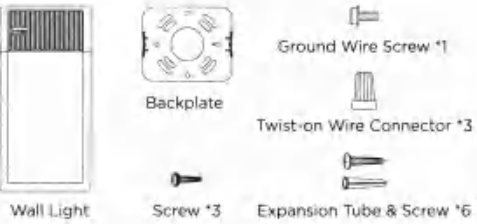
- For your safety, this product must be installed in accordance with local building laws. Consult or engage a registered and qualified electrician to install it for you. If you are installing this product yourself, make sure you notify your local government building control authority to inspect and test your installation.
- Never take risks with electrical safety. Before you start any type of electrical work, make sure the environment is absolutely safe.
- Place the light away from children to avoid dangers resulting from improper operation.
- This product is rated as IP65 Waterproof. It can be used outdoors but cannot be immersed in water.
- During installation, avoid scratching the light cover which might affect the lighting effects.
- Only use the control provided with or specified by these instructions to control this lamp. This lamp will not operate properly when connected to a standard (incandescent) dimmer or dimming control.
- The operating temperature should be within -20°C to 45°C (-4°F to 113°F).

01

Introduction

Thanks for choosing the Outdoor Wall Light. The wall light adopts a high-quality aluminium alloy cover, which is IP65 waterproof. It can be easily installed on porches, outdoor wall surfaces, etc. It has a high lumen value, rich colors, and a variety of fantastic RGBIC lighting effects. DIY your favorite lighting effects now!

What's in the Box



Follow the Quick Start Guide to install the product

02

Smart App-Magic Lantern

How to Download the Smart App:
For All Users: Scan the QR code provided below to install the App.
For Android Users:
Alternatively, you can download the "Magic Lantern" app from Google Play.
For iOS Users:
Alternatively, download the "Magic Lantern" app from the Apple Store.

Please scan the QR code below and install the App.



03

Specifications

Input	100-240VAC 50/60Hz
Color Rendering Index	CRI>90
Color Temperature	2700K ~ 6500K
Lumens (6500K)	1500lm
Light Color	RGBWW
Waterproof	Wall Light (IP65)
Product Dimensions	Height—263mm/10.35inch
	Length—131mm/5.16inch
	Width—64.5mm/2.54inch

How To Operate The Smart App

- Initial Setup: Agree to use Bluetooth when prompted during the first app launch.
- Enable Bluetooth: Turn on Bluetooth on your smartphone.
- Device Connection: In the app, go to the "Group Manage" screen to find and connect to the new device.
- Color Adjustment: Adjust the light color to your preference.
- Lighting Styles & Music Selection: Choose from various lighting styles and music options.
- Timing & Voice/Mic Mode: Set up timing schedules and use voice or microphone control for interactive features.

04