

140mm

## Rgbicw Floor Lamp

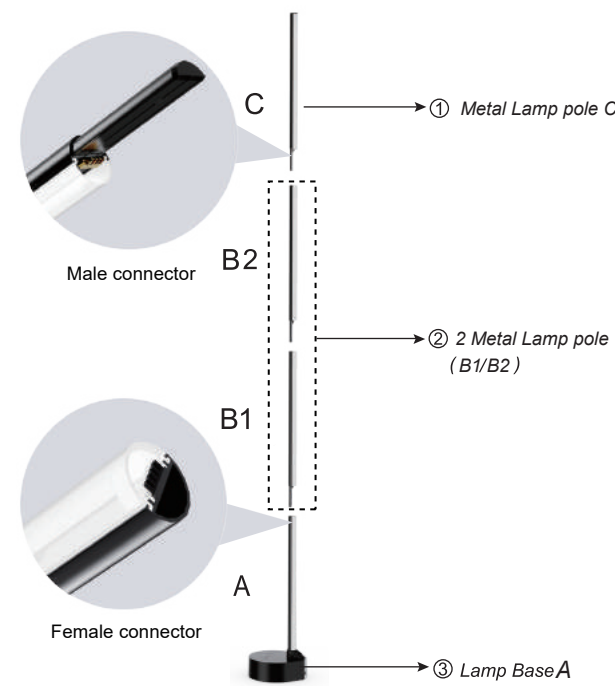
### User Manual



### CONGRATULATIONS

Congratulations! You've purchased the Rgbicw floor lamp. Please read the user manual and warnings carefully and keep it for future reference. Correct installation is required, please follow the instruction step by step. After installation, this Rgbicw floor lamp can be controlled by App or touch-sensitive button on the lamp.

### PRODUCT OVERVIEW



### LAMP ASSEMBLY

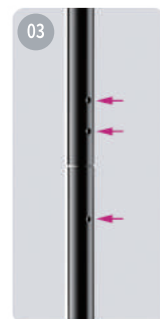
- Unpack all lamp parts and lay out with the base lying on steady surface. The LED corner floor lamp consist of six parts: 1\* Electric Wire with Adapter, 4\*Lamp Pole, 1\* Lamp Base.
- Please arrange the 4 lamp poles in order, the top of C is flat, and there is no distinction between B1 and B2.
- Insert the male connector of B to the female connector of A, then insert C in the same way.
- Plug adapter into outlet and now the lamp is ready for use.



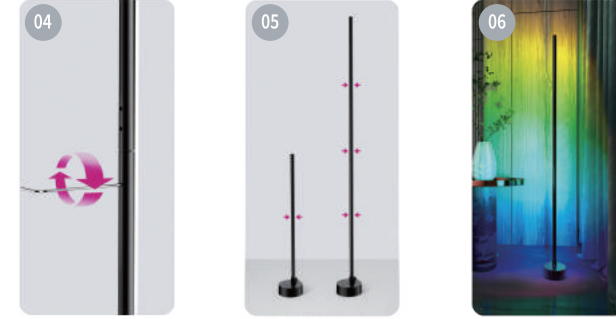
This section of the lamp is fixed to the base, please do not screw or pull out.



Connect two pin plugs correctly.



Make sure that the holes are on the same surface and aligned.



fix it with the screw

Optionally install the other two lamp poles in sequence.

After the installation is complete, connect to the power supply, the lights will be lit.

#### Note:

When removing the lamp, you can continue to gently shake the connection to pull out the lamp, do not pull it violently, which may damage the cable.

For best performance, please adjust the Rgbicw floor lamp position, keep it at a proper distance from you and not affect your walking back and forth in the room.

### OPERATION INSTRUCTION

#### Manual Operation Step

- Plug the AC adapter into a standard household 110VAC outlet.
- You can quickly control the light through the three buttons of the base.

Short touch to switch colors, 6 Rgbicw color mode.

#### Note:

After the device adapter is connected to the power supply, it will automatically turn on and connect to the last mode used last time. Normal shutdown and the adapter will not start automatically when it is in a continuous power supply state.

### Smart Control Operation Step

#### Step A: Download "Smart Life" App

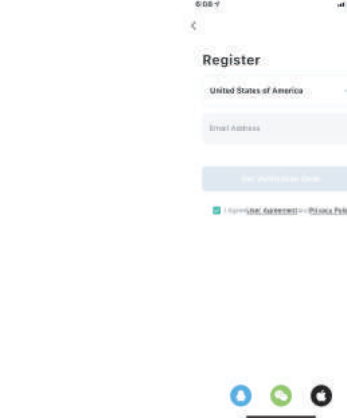
- Please choose either way below to download and install the app.
- Please scan the QR code below to download the "Smart Life" App:



- You can also download "Smart Life" in Apple's App Store or search for "Smart Life" in the Android application.

#### Step B: Create a "Smart Life" Account and Sign in

Open the "Smart Life" App. If you don't have an APP account, you need to enter the registration page to create an account.



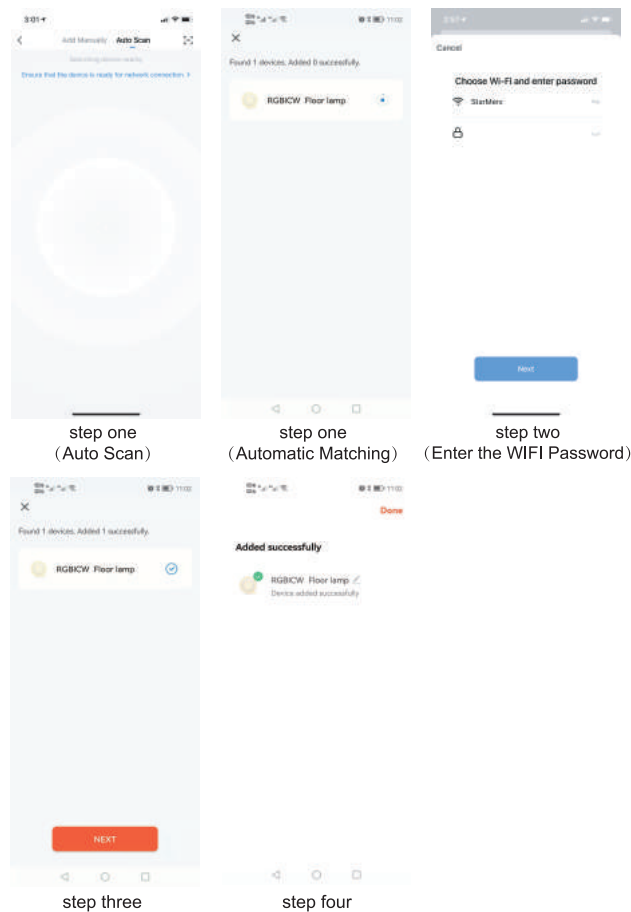
Short touch to switch colors, 6 Rgbicw color mode.

#### Pair the Rgbicw floor lamp to "Smart Life" App

#### Note:

The lamp will automatically drop out pairing mode if no any mobile device connected within 3 minutes.

### Pair the Rgbicw floor lamp to "Smart Life" App.

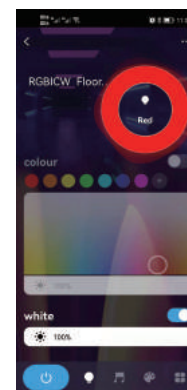


Rgbicw

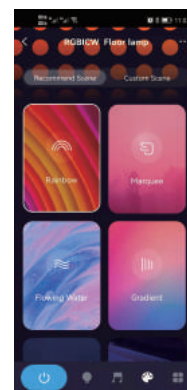
#### Note:

Select a 2.4 GHz Wi-Fi network and enter the password. (Make sure the phone is connected to the 2.4 GHz network.)

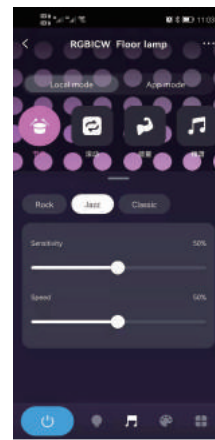
Rgbicw



Dimmer



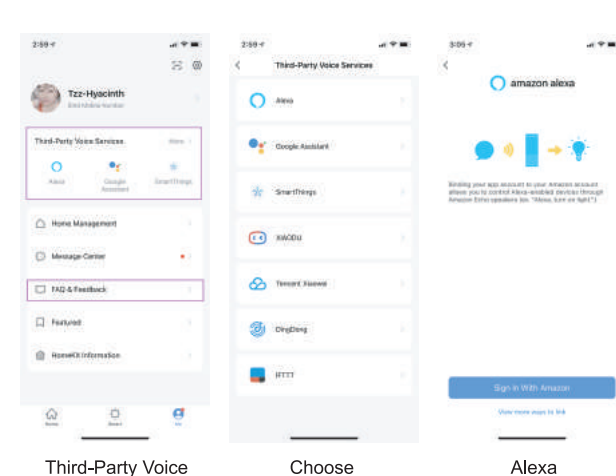
Mode



Music

Rgbicw

- Open your "Smart Life" App, find your "Profile", you will see the Third-Party Voice Services.
- Then choose the one you want to connect. There are guiding steps respectively as below.



#### Note:

In the process of using the product, if you encounter problems related to the APP, you can go to FAQ & feedback for inquiries.

### SPECIFICATION

Product Name	
Material	Aluminum & PC
Dimension	Φ13 X H 1415 CM
Rated Power	12W
Input Voltage	AC 100~240V
Color of light	Rgbicw
Max Luminous Flux	960lm
LED Light Source	Digital/Programmable Rgbicw 72 LEDs
Controlled	Voice/APP/Touch
Waterproof	Indoor Use Only

### SAFETY WARNING

- The Rgbicw floor lamp and surrounding parts might get hot after several hours of continuous use, do not place your hands directly on the light.
- Please ensure the stated minimum distance is maintained at all times.

- This product should be kept away from combustible materials (eg. curtains).
- Power off when replacing and cleaning to avoid electric shock.
- Be cautious of static electricity during installation and usage.
- Do not stare at the lamp for a long time.
- Please keep it away from children.
- The product is not water resistant, be cautious when installing and using.

### CUSTOMER SERVICE

We provide Two-year service warranty. If there are any questions when you received the product, please feel free to contact our customer service.

### FCC Statement

This equipment has been tested and found to comply with the limits for a Class B digital device, pursuant to part 15 of the FCC Rules. These limits are designed to provide reasonable protection against harmful interference in a residential installation. This equipment generates, uses and can radiate radio frequency energy and, if not installed and used in accordance with the instructions, may cause harmful interference to radio communications. However, there is no guarantee that interference will not occur in a particular installation. If this equipment does cause harmful interference to radio or television reception, which can be determined by turning the equipment off and on, the user is encouraged to try to correct the interference by one or more of the following measures:

- Reorient or relocate the receiving antenna.
- Increase the separation between the equipment and receiver.
- Connect the equipment into an outlet on a circuit different from that to which the receiver is connected.
- Consult the dealer or an experienced radio/TV technician for help.

Caution: Any changes or modifications to this device not explicitly approved by manufacturer could void the authority to operate this equipment.

This device complies with part 15 of the FCC Rules. Operation is subject to the following two conditions: (1) This device may not cause harmful interference, and (2) this device must accept any interference received, including interference that may cause undesired operation.

#### RF Exposure Information

This equipment complies with FCC radiation exposure limits set forth for an uncontrolled environment. This equipment should be installed and operated with minimum distance 20cm between the radiator and your body.