

# KC.IG.00070(1.02.23.0064)

## Antenna Specification

### 1. Application:

This application shall apply for antenna unit which shall be used such as automotive, conventional communications, smart home, etc..

### 2. Electrical Specification:

*Those specifications were specially defined for customer's model, and all characteristics were measured under the model's handset testing jig .*

#### 2-1. Frequency Band:

Frequency Band	MHz
BT	2400~2500MHz


#### 2-2. Impedance

50 ohm nominal

#### 2-3. VSWR

##### 2-3-1. Measurement frequency points and VSWR value

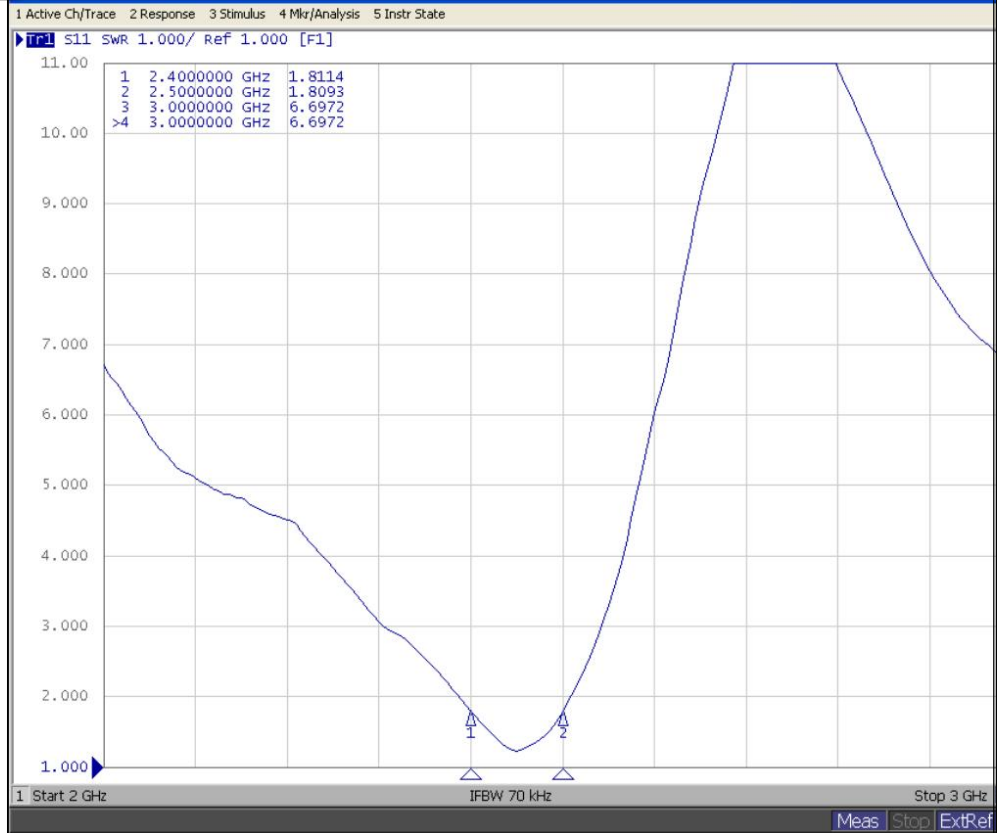
Frequency Band(MHz)	2400	2500
Typical Value (VSWR)	1.8	1.8

UNLESS OTHER SPECIFIED TOLERANCES ON : X=±            X.X=±            X.XX=± ANGLES=±            HOLEDIA=±		 <b>TOXU TECHNOLOGY CO., LTD.</b>
SCALE :	UNIT : mm	
DRAWN BY: LI	CHECKED BY: YS	THIS DRAWINGS AND SPECIFICATIONS ARE THE PROPERTY OF TOXU TECHNOLOGY CO.,LTD.AND SHALL NOT BE REPRODUCED OR USED AS THE BASIS FOR THE MANUFACTURE OR SALE OF APPARATUS OR DEVICES WITHOUT PERMISSION
DESIGNED BY: De wen	APPROVED BY: YS	
TITLE : KC.IIG.00070 Antenna Specification		SPEC REV.
		P0

2-3-4 Measuring Method

1. A 50Ω coaxial cable is connected to the antenna. Then this cable is connected to a network analyzer to measure the VSWR.
2. Keeping this jig away from metal at least 20 cm

2-3-5 Picture



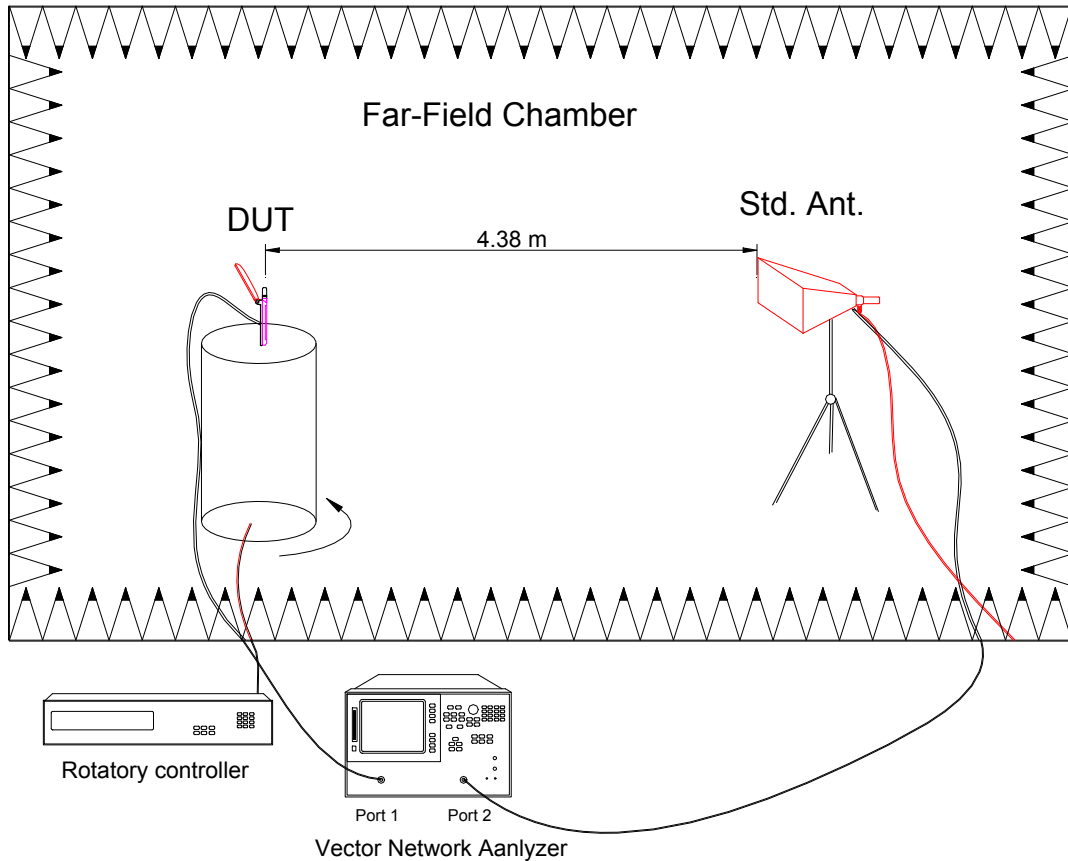
UNLESS OTHER SPECIFIED TOLERANCES ON :		<b>TOXU</b> 同讯技术	<b>TOXU TECHNOLOGY CO., LTD.</b>
X=±	X.X=±		
ANGLES=±	HOLEDIA=±		
SCALE :	UNIT : mm	THIS DRAWINGS AND SPECIFICATIONS ARE THE PROPERTY OF TOXU TECHNOLOGY CO.,LTD.AND SHALL NOT BE REPRODUCED OR USED AS THE BASIS FOR THE MANUFACTURE OR SALE OF APPARATUS OR DEVICES WITHOUT PERMISSION	
DRAWN BY: LI	CHECKED BY: YS		
DESIGNED BY: De wen	APPROVED BY: YS		
TITLE : KC.IIG.00070 Antenna Specification			SPEC REV. P0

## 2-4. Efficiency and Gain

### 4-5.1 Measure method

1. Using a low loss coaxial cable to link a standard handset jig
2. Fixed this handset jig on chamber's rotator plane
3. Linking jig into network analyzer port and using a probing horn antenna to collect data.
4. Using another standard gain horn antenna to calibrated those data

### 4-5.2 Chamber definition

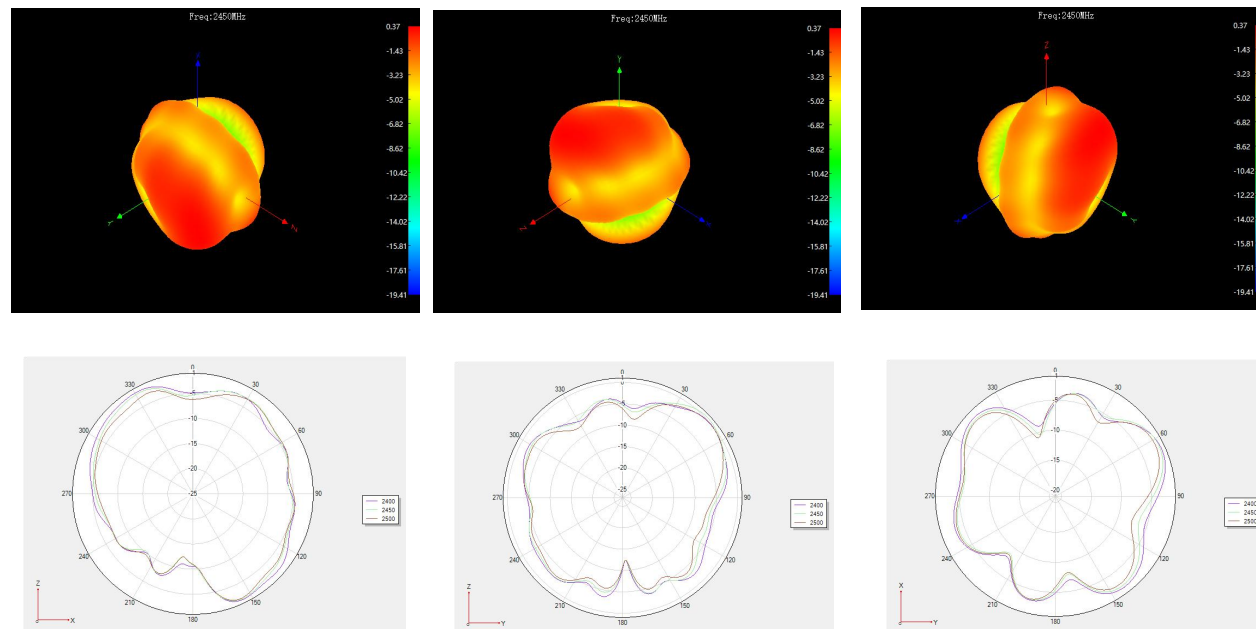



1. An anechoic chamber (7mx4mx3m) which satisfied far-field condition was applied to avoid multi-path effect
2. The quite room region is 40cmx40cmx40cm at the center of rotator
3. The distance between DUT and standard antenna is 4.38 m
4. Probing antenna (9120D horn antenna) and standard gain horn antenna (BBHA9120 LPF 700MHz ~6GHz)

UNLESS OTHER SPECIFIED TOLERANCES ON :		<b>TOXU</b> 同讯技术	<b>TOXU TECHNOLOGY CO., LTD.</b>
$X = \pm$	$X.X = \pm$		
ANGLES = $\pm$		HOLEDIA = $\pm$	
SCALE :	UNIT : mm		
DRAWN BY: LI	CHECKED BY: YS		
DESIGNED BY: De wen	APPROVED BY: YS		
TITLE : KC.IIG.00070 Antenna Specification			THIS DRAWINGS AND SPECIFICATIONS ARE THE PROPERTY OF TOXU TECHNOLOGY CO.,LTD.AND SHALL NOT BE REPRODUCED OR USED AS THE BASIS FOR THE MANUFACTURE OR SALE OF APPARATUS OR DEVICES WITHOUT PERMISSION
			SPEC REV. P0

## 2-4-1 Efficiency and Gain

Frequency/Mhz	Efficiency / %	MaxGain/dBi
2400	45.19	1.13
2410	45.92	1.01
2420	44.46	0.78
2430	42.36	0.69
2440	42.36	0.43
2450	41.81	0.37
2460	40.55	0.24
2470	40.07	0.27
2480	41.37	0.36
2490	42.64	0.43
2500	40.73	0.36

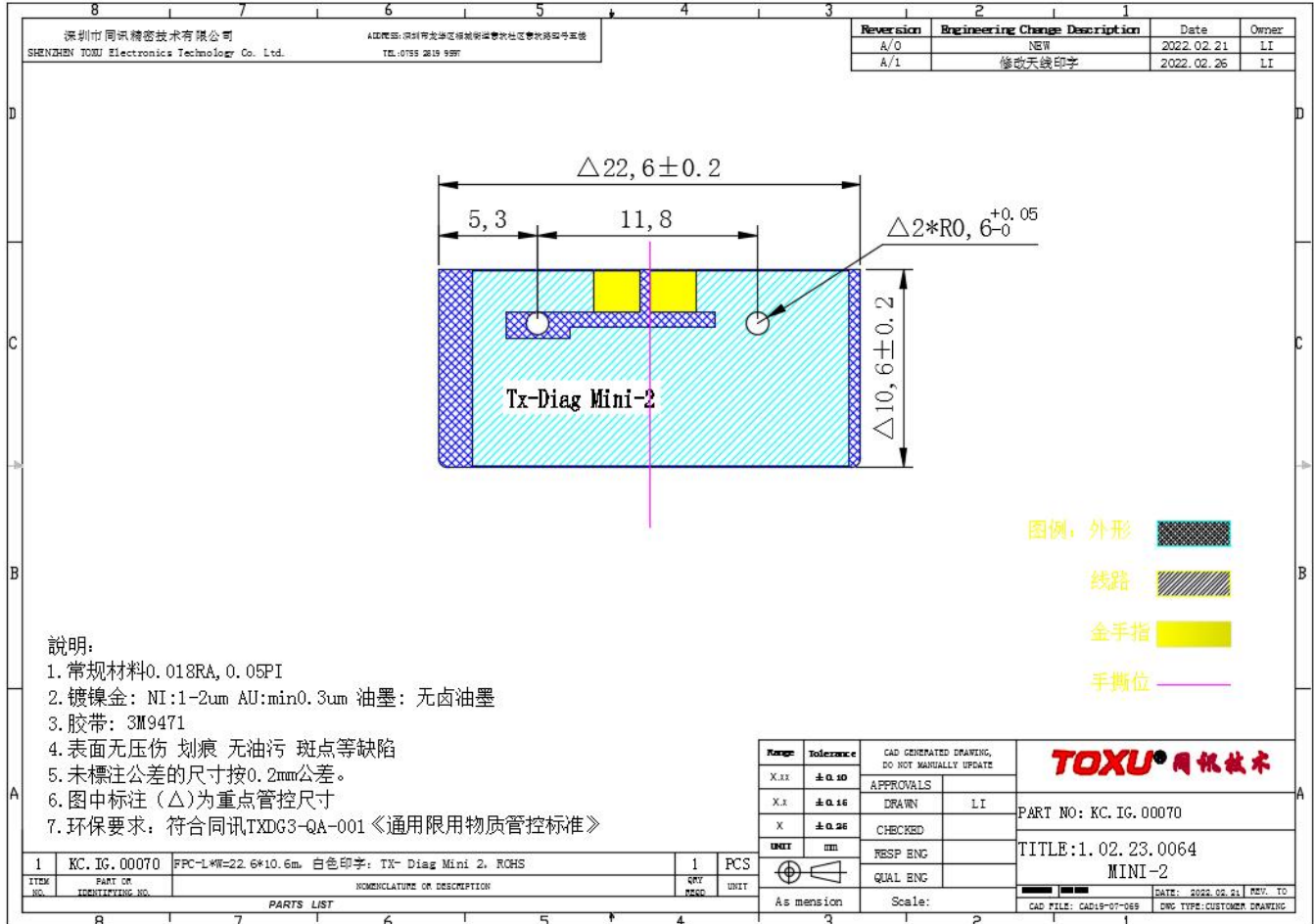


UNLESS OTHER SPECIFIED TOLERANCES ON :		 <b>TOXU TECHNOLOGY CO., LTD.</b>
$X = \pm$	$X.X = \pm$	
$ANGLES = \pm$	$HOLEDIA = \pm$	THIS DRAWINGS AND SPECIFICATIONS ARE THE PROPERTY OF TOXU TECHNOLOGY CO.,LTD.AND SHALL NOT BE REPRODUCED OR USED AS THE BASIS FOR THE MANUFACTURE OR SALE OF APPARATUS OR DEVICES WITHOUT PERMISSION
<b>SCALE :</b>	<b>UNIT : mm</b>	
<b>DRAWN BY: LI</b>	<b>CHECKED BY: YS</b>	
<b>DESIGNED BY: De wen</b>	<b>APPROVED BY: YS</b>	
<b>TITLE : KC.IIG.00070 Antenna Specification</b>		<b>SPEC REV.</b>
		<b>P0</b>

### 3. Mechanical Specification:

#### 3-1. Mechanical Configuration (Unit: mm)

The appearance of the antenna is according to drawing



UNLESS OTHER SPECIFIED TOLERANCES ON :		<b>TOXU</b> 同讯技术	<b>TOXU TECHNOLOGY CO., LTD.</b>
<b>X=±</b>	<b>X.X=±</b>		
<b>ANGLES=±</b>	<b>HOLEDIA=±</b>	THIS DRAWINGS AND SPECIFICATIONS ARE THE PROPERTY OF TOXU TECHNOLOGY CO.,LTD.AND SHALL NOT BE REPRODUCED OR USED AS THE BASIS FOR THE MANUFACTURE OR SALE OF APPARATUS OR DEVICES WITHOUT PERMISSION	
<b>SCALE :</b>	<b>UNIT : mm</b>		
<b>DRAWN BY: LI</b>	<b>CHECKED BY: YS</b>		
<b>DESIGNED BY: De wen</b>	<b>APPROVED BY: YS</b>		
<b>TITLE : KC.IIG.00070 Antenna Specification</b>			<b>SPEC REV.</b>
			<b>P0</b>