

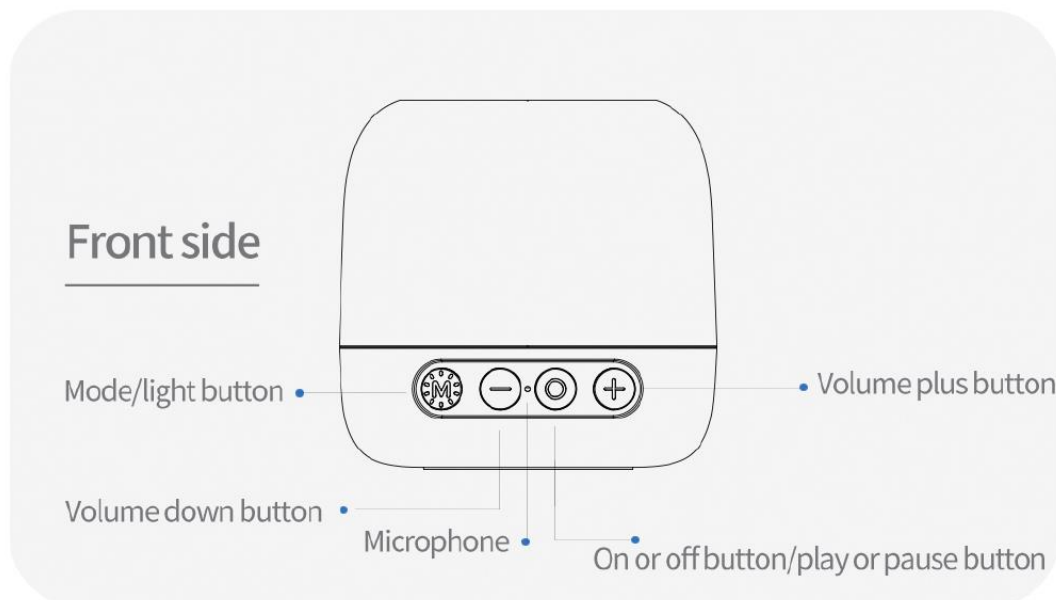
M10

## Product brochures

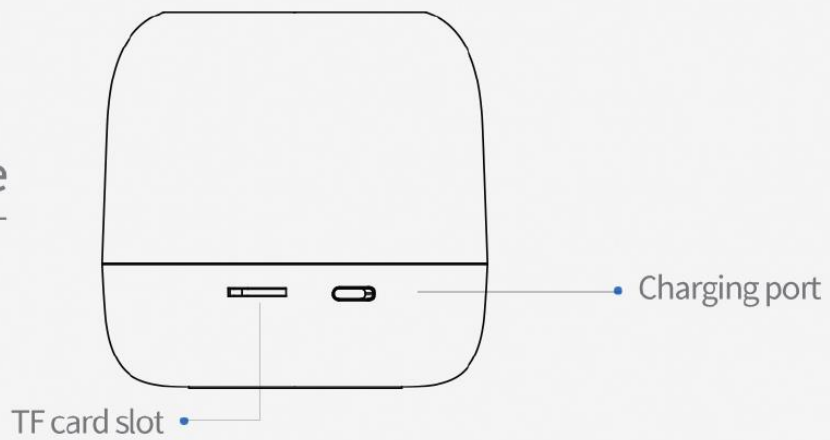


- One speaker
- Type-C cable 1pc

# Product construction description



## Back side



Note: The pictures in this brochures are all schematics and may deviate from the real thing, please refer to the real thing.

# Basic functions



## Switching on and off

(Please ensure that the Bluetooth speaker is fully charged)

Power on: long press on/off button for 3 sec

Turn off: long press on/off button for 3 sec

## Light button

- ① Short press the light adjustment button to turn on/off the night light effect
- ② Short press the light adjustment button to turn on the speaker RGB light effect
- ③ Short press the light adjustment button to switch the speaker RGB light effect

# Bluetooth connection

(Please keep your phone's Bluetooth on)



① Turn on Bluetooth



② Matching connections

## First time use

① The speaker will automatically enter the Bluetooth pairing state, you need to open the phone Bluetooth search device named "M10", click and connect.

## Use again

① The speaker will automatically connect to the phone that was last connected before it was switched off when it is switched on, eliminating the need for steps such as searching for a connection.

# Music Play

## Pause/play

Press the play button briefly



## Previous song

Press and hold the volume down button



## Next song

Press and hold the volume up button



## Volume up or down

Press the volume up/down button briefly



# Call status

Note: The call function requires the phone to be connected to a Bluetooth speaker

## Answer the phone

Press the play button briefly



## End of call

Press the play button briefly



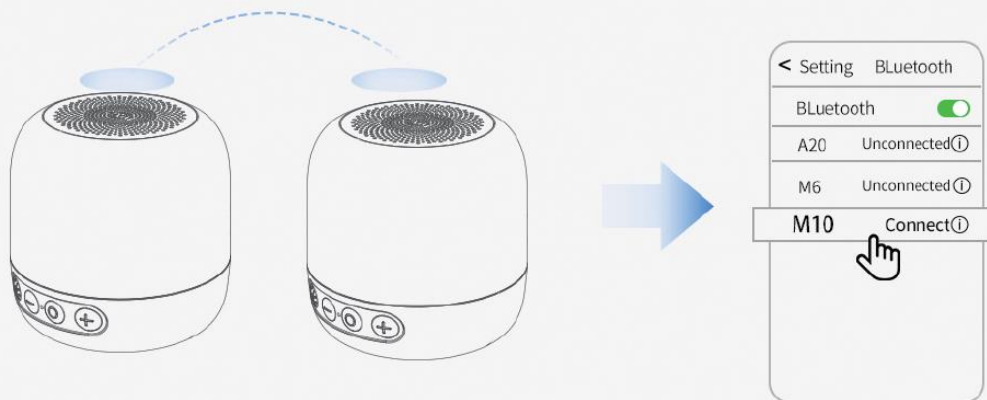
## Refusal to call

Press and hold the play button



# TWS Connect

(This feature requires two M10 speakers to be interconnected)



## Step 1

Double click the play button on either speaker before pairing the speakers with Bluetooth(The speaker that is double clicked is the main unit and is left channel)  
Wait for the two speakers to interconnect and beep when the interconnection is successful(TWS first connection with the two speakers close together)

## Step 2

Use your phone's Bluetooth function to search for a device called "M10" and click to connect.



## Cautions

- ① For more functions, please refer to the above instructions for music playback and call status, and operate any of the speakers.
- ② TWS Connect only supports use in Bluetooth mode
- ③ TWS interconnection, the host speaker has an incoming call tone when calling, after answering, the host speaker has a call sound (the host has, the slave does not)
- ④ TWS interconnection, when playing music in BT mode
  - A Host insert TF card, automatically switch TF card mode, slave BT disconnect; remove TF card, automatically restore TWS interconnection, automatically connect back to the phone
  - B When TF card is inserted in the slave, TF card mode is automatically switched, host BT is not connected and music continues to be played; when TF card is removed, TWS interconnection is automatically restored and BT music is automatically played

## Mode switch

### Switch between TF card mode and Bluetooth mode

Double press the light adjustment button to switch modes

Note: The default power on is Bluetooth mode, TF card mode needs to be switched by pressing the mode button, TF card mode needs to be inserted into the speaker TF card before it will be switched successfully.

## Charge

- ① When the speaker is low on power, it will actively sound a beep.
- ② When charging, the orange light inside the body is on for a long time, and the light will go out when fully charged.

# Specification

Bluetooth version	Input specifications	Bluetooth distance range
V5.1	5V==1A	10M
Speaker size	TWS interconnection distance	Product weight
81*81*78mm	6-8M	To be tested
Memory Cards	Speaker power	
Support up to 32G	3W	
Support Agreement		
A2DP、AVCTP、AVDTP、HFP、SPP		

## Notes for use

- ① Please follow the instructions in this brochures

---
- ② Please do not use a charger with an output specification exceeding 5V 1A to charge this product, as this will easily cause damage to the product's battery.

---
- ③ Please use and store this product in a room temperature environment.

---
- ④ Do not use this product near heat sources such as radiators, hot air regulators, stoves or other heat generating apparatus.

---
- ⑤ Do not block the openings of this product, such as the charging port, indicator light and microphone.

---
- ⑥ Please avoid using the product at too loud a volume or for too long a time to avoid causing damage to the user's hearing.

---
- ⑦ Any damage to the equipment for any reason must be dealt with in a timely manner by contacting our after-sales staff, unauthorised dismantling will invalidate the warranty.

# Product material safety

Component name	Toxic and harmful substances or elements					
	铅 (Pb)	汞 (Hg)	镉 (Cd)	六价铬 (Cr(VI))	多溴联苯 (PBB)	多溴二苯醚 (PBDE)
Shell	○	○	○	○	○	○
Cables	○	○	○	○	○	○
Horn	○	○	○	○	○	○
Mainboard	○	○	○	○	○	○
PCB	○	○	○	○	○	○
Battery	○	○	○	○	○	○
MIC	○	○	○	○	○	○
Other	○	○	○	○	○	○

This form has been prepared in accordance  
with the provisions of SJ/T 11364

---

O: indicates that the content of the harmful substance  
in all materials of the component is below the limit specified  
in GB/T26572

---

X: indicates that the content of the harmful substance  
in at least one material of the component exceeds the limit  
specified in GB/T26572

---

\*Depending on the product model, the product you purchase  
may not contain all of the above components

## After Sales Service

This equipment comes with a 1 year limited product hardware warranty from the date of purchase.

---

In accordance with national regulations and provided that the product is complete in appearance and packaging, the following after-sales rights are available during the warranty period.

---

① If there is a product quality problem within 7 days, return the hardware to the place of purchase or at the place designated by our company, and refund the purchase price you paid for the hardware product with a valid proof of purchase.

---

② If there is a product quality problem within 90 days, you can replace the hardware product at the place of purchase or at our designated place, or our designated maintenance outlets for warranty, and the warranty period of the replaced hardware is the remaining days of the warranty period.

---

③ If there is a product quality problem within 1 year, you can go to our designated maintenance outlets for warranty.



## Warranty limitations—Our warranty does not cover faults or damage caused by:

① accident, misuse, mishandling or any unauthorised repair, modification or dismantling.

---

② Improper operation or maintenance, violation of product instructions during use or connection to an unsuitable power supply.

---

③ Use of consumables not supplied by us (e.g. spare batteries), except in cases where such restrictions are prohibited.

---

④ Other damage caused by force majeure.

### FCC Statement

This equipment has been tested and found to comply with the limits for a Class B digital device, pursuant to Part 15 of the FCC Rules. These limits are designed to provide reasonable protection against harmful interference in a residential installation. This equipment generates uses and can radiate radio frequency energy and, if not installed and used in accordance with the instructions, may cause harmful interference to radio communications. However, there is no guarantee that interference will not occur in a particular installation. If this equipment does cause harmful interference to radio or television reception, which can be determined by turning the equipment off and on, the user is encouraged to try to correct the interference by one or more of the following measures:

- Reorient or relocate the receiving antenna.
- Increase the separation between the equipment and receiver.
- Connect the equipment into an outlet on a circuit different from that to which the receiver is connected.
- Consult the dealer or an experienced radio/TV technician for help.

This device complies with part 15 of the FCC Rules. Operation is subject to the following two conditions: (1) This device may not cause harmful interference, and (2) this device must accept any interference received, including interference that may cause undesired operation.

Changes or modifications not expressly approved by the party responsible for compliance could void the user's authority to operate the equipment.