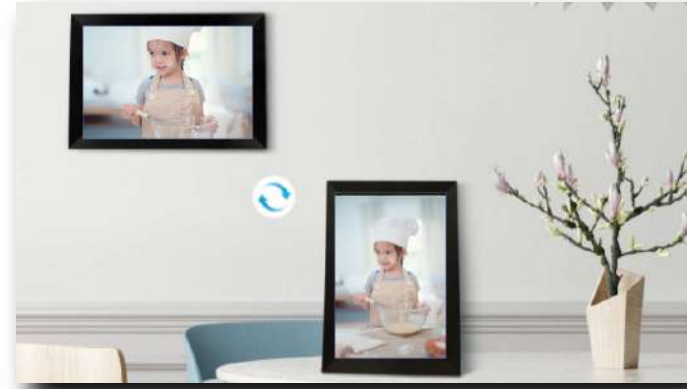


2.3.10 Horizontal/Vertical rotation

Automatically rotate the content based on actual positioning (horizontal/vertical) of the frame.



2.3.11 Weather & Time

The home screen will display the weather in your area.

2.3.12 Video Content Settings

Video_volume: You can set the volume from the menu.

Pause: You can pause a playing video.

2.4 Settings

2.4.1 My frame

Frame Name

Set/Change the name of the frame. The frame name is also displayed in connected mobile devices, under the list of connected photo frames in the App.

Frame Location

Set/Change the location of the photo frame. This location is displayed in the list of connected photo frames of your friends and family, helping to identify multiple frames.

Time Zone

Set time zone for a photo frame.

Language

Set language used for a photo frame.

Automatic date & time

Use network-provided time.

Set date/time

The date and time can be manually adjusted after the automatic date&time is turned off.

Enable/Disable 24-hour clock

Enable and disable the 24-hour clock.

Reset Frame

Delete all data of the photo frame. This will permanently delete all photos, friends/connections and settings.

2.4.2 Photo management

Memory Usage

The Manage Photo section shows you the number of photos stored in the frame and the storage space occupied/remained.

Show/Hide Photos

Select the photo you want to hide by tapping the photo. Hidden photos will not be deleted from the frame and can be re-displayed at any time.

- You can view only the hidden photos or the displayed photos.

Delete Photos

Select the photo you want to permanently delete from the frame by tapping the photo.

- You can view only the hidden photos or the displayed photos.

- You can view the photos in chronological or reverse order.

Import Photos

Allows you to import photos from an external storage device (E.g. a microSD card).

To import photos:

Insert an external storage device (Eg: a microSD card) into the device with the photos to be imported.

Select the photos to be imported into the photo frame. Tap the import button to start.

Export Photos

Allows you to export photos from the photo frame to an external storage device (E.g. a microSD card).

To export photos:

Select the photo to be exported from the photo frame.

Tap the export button to start.

The SD card can increase the storage capacity of the photo frame.

2.4.3 Manage account

This contains all connected accounts that are authorized to send photos to your frame.

Add a New Account

To add a new authorized account, tap the device share button, and then share the displayed SN or QR code you preferred with your friend.

Account Settings

Once an account is removed from the list, it will not be able to share photos to the photo frame. You can delete all photos associated with an account.

- You can view the photo shared by the current account;
- You can delete the account (only delete the account, not the shared photos);
- You can delete the account and its shared photos.

2.4.4 Display

Brightness Setting

Adjust the screen brightness level.

Ambient Clock

Once enabled, a clock will be displayed when the photo frame is on sleeping mode.

Font Size

There are 4 Font Size for selection.

Sleep Mode

When the sleep mode is on, the screen is turned off during a specific time to reduce energy consumption. The default setting is to turn off the screen at 20:00 and to turn it back on at 08:00. This can be changed by setting your preferred sleep mode start/end time. Photos can still be received when the sleep mode is on.

Weather & Time

Enable and disable the weather and time. When

enabled, the weather and time are displayed on the home page, and when disabled, they are not displayed.

Set weather

View weather specific information and search to switch to other cities.

Temperature unit

Supports Celsius and Fahrenheit switching.

2.4.5 Photo settings

Timer

Set the photo display time interval.

Show Caption

There are 3 options to set whether to show photo's caption or not, 3 seconds is just showing it in 3 seconds, Always is showing it all the time, Off is hiding it.

Fill Frame

This function is to change the scaling of all current photos on the frame or not

Slideshow

There are 6 slideshow effects for selection. You can set your preferred photo display mode.

Photo Display Mode

Set the the order of photo rotation.

- By date: Photos are displayed in chronological order.
- According to user: display by preference.
- Random: The photos are displayed randomly.

Video Related Settings

Video autoplay: When turned on, video will be automatically played; when turned off, video will be paused.

Playback audio: When turned on, the video will be muted; when turned off, the video will be played with preset volume.

Video volume setting: Adjust the video volume of the photo frame.

Playback Mode Settings

Determine how the photo will be displayed

Loop: lock the current photo or video or display in a loop.

Sequence: play accordance with the display mode.

2.4.6 Notifications

Notification Volume Setting

Adjust the notification volume of the photo frame.

2.4.7 Wi-Fi

Set the Wi-Fi connection.

Wi-Fi Details

Display Wi-Fi details, such as Wi-Fi name, Wi-Fi strength, Wi-Fi status, etc.

Add a hidden Wi-Fi

Add a hidden Wi-Fi manually.

Refresh the current Wi-Fi list.

2.4.8 Help

Guide

Simply introduce how to use the Photo Frame.

Support

For FAQ, technical support and feedback.

Privacy agreement

Display the content of the privacy agreement.

2.4.9 About

Software version update

Check the photo frame software version update.

Firmware VersionUpdate

Check the photo frame firmware version update.

System Version Update

Display Android system version information.

Mac Address

Display the Mac address of the photo frame.

3.How to use Whale Photo APP

3.1 Quick Setup

APP is equivalent to a transfer tool, you can log in with a visitor account or with an email account.

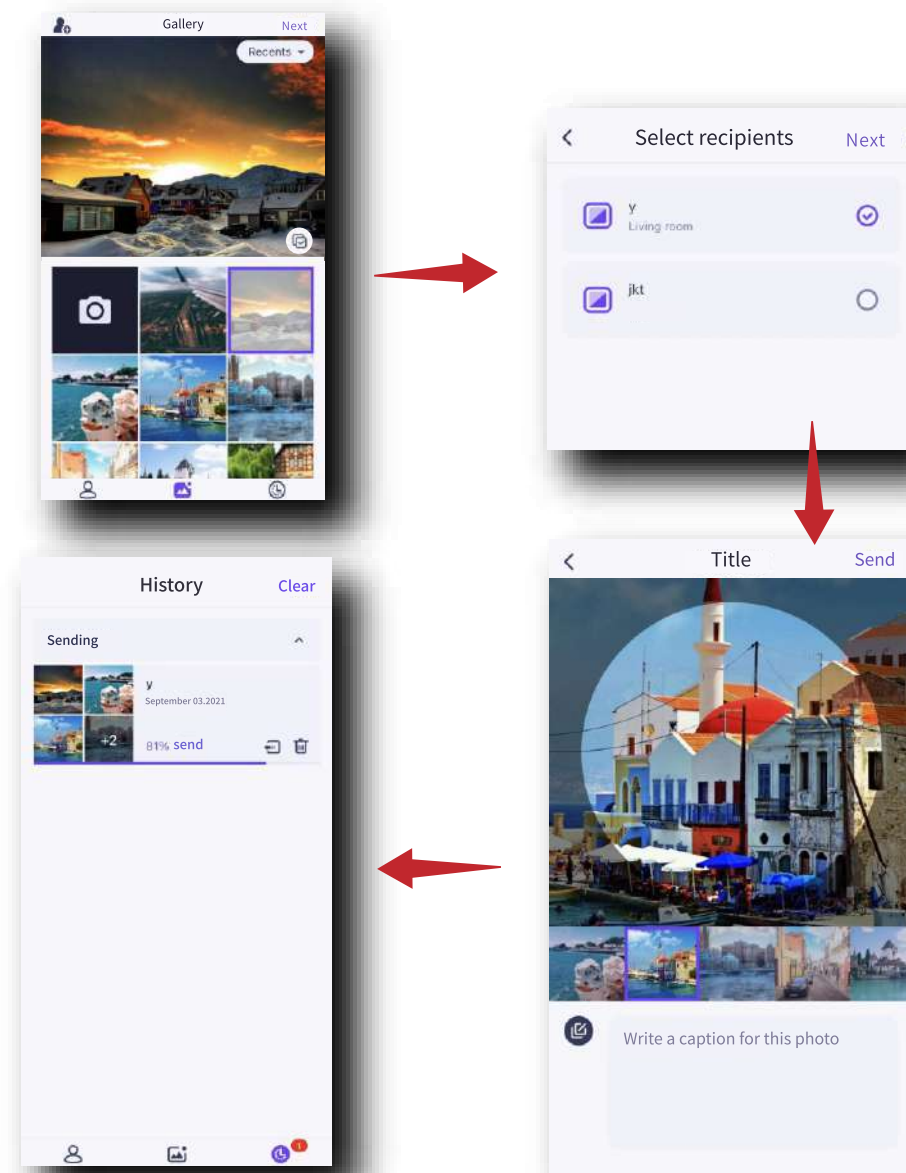
Visitor accounts: The data will not be saved in the cloud, the accounts created are temporary. As long as you uninstall or reset APP, the temporary account and the information generated by the account will all be deleted.

Email account: The cloud will keep your usage data (such as avatar, nickname, photo frame binding relationship), and the data will exist when you uninstall/reset the app or change your phone to

3.2 Photo Share

Sharing photos is divided into picture share and video share.

Photo share: select pictures (up to 10 pictures) - select photo frames - edit pictures (adjust focus areas and name photos) - send.



Video share: select video (only one video can be selected, 30 seconds length video) - select photo frame - edit video (video length and video naming) - send.

3.3 History

You can check the status of photo sending tasks and perform some quick actions on the sending history side.

Delete: Deletes local history data (does not delete framed photos).

Clear: clears the history data (does not delete the task in the sent state).

Resend: you can resend this photo to other frames.

Withdraw: Deletes local history data and frame photos.

4. Warranty, compliance, technical support and safety information

For detailed information about warranty, hardware compliance, technical support and safety, please refer to the information in the package.

Work with Alexa

1. Voice Assistant

Work with Alexa: Users need to download the official "Amazon Alexa" app, then call out instructions to control the photo frame through the app.

1.1 Download the Amazon Alexa App

Download "Amazon Alexa" on your mobile devices:

- For Android mobile phone/tablet (with Google Suite): find Amazon Alexa in Google play, then download and

install;

- For iOS iPhone/iPad: find Amazon Alexa in Apple Store, then download and install.

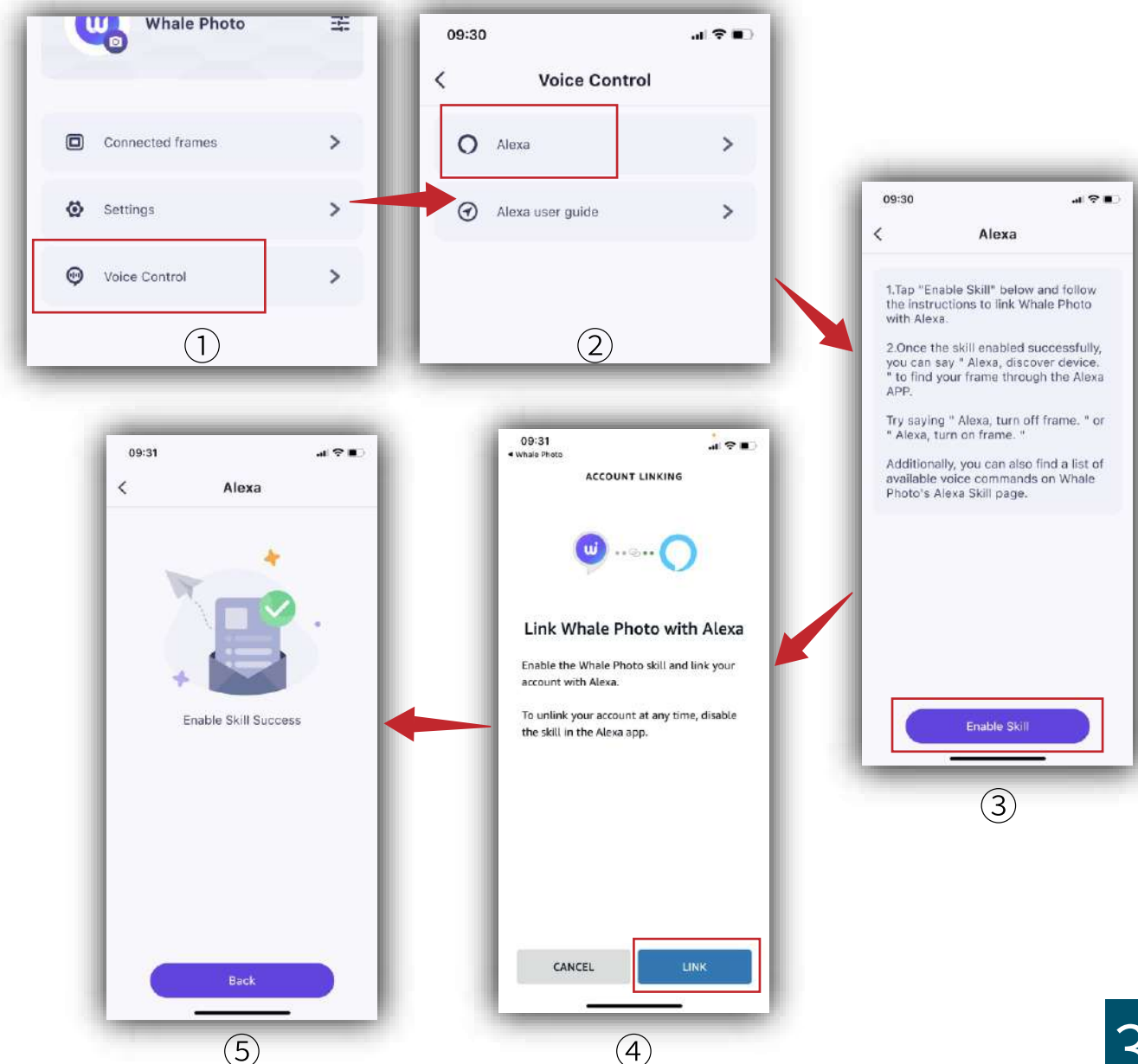
1.2 Skill binding

You can bind the Skill via PC or mobile APP.

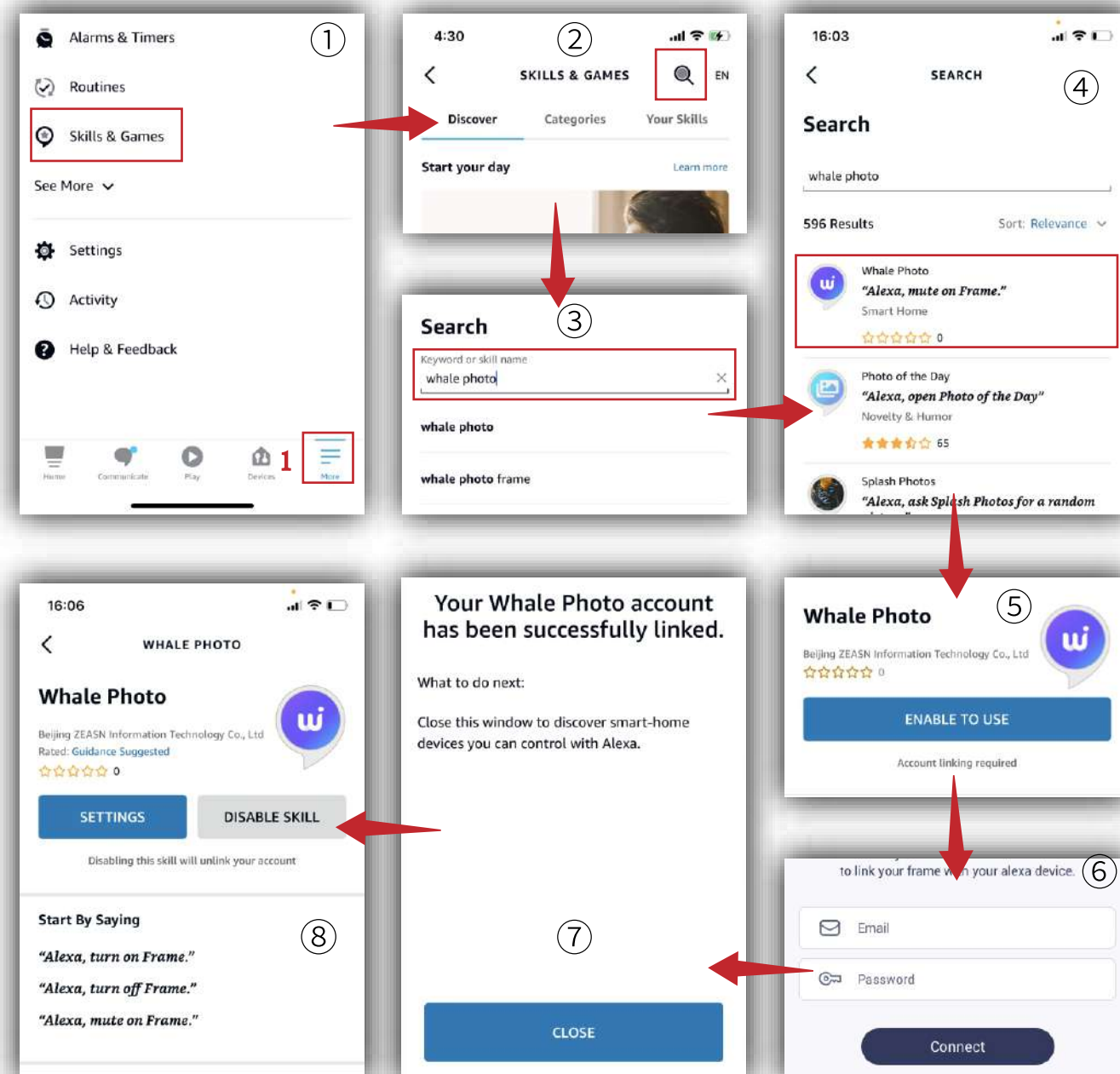
1.2.1 APP bundle (recommended)

1) Enable the Alexa skill. There are 2 ways to do it.

- Through the Whale Photo APP



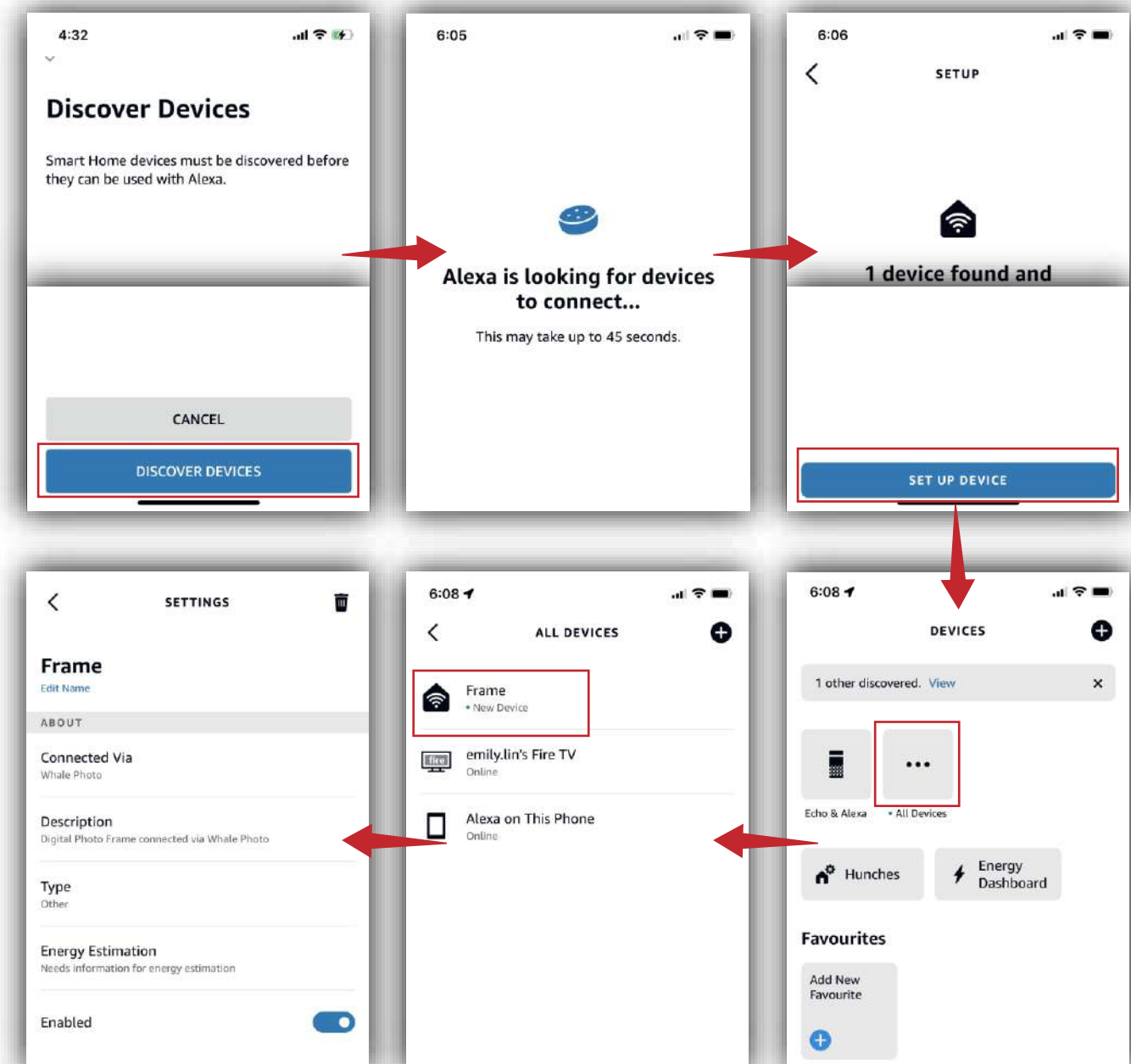
● Through the Whale Photo APP



2) After successful binding, link the skill to your device.

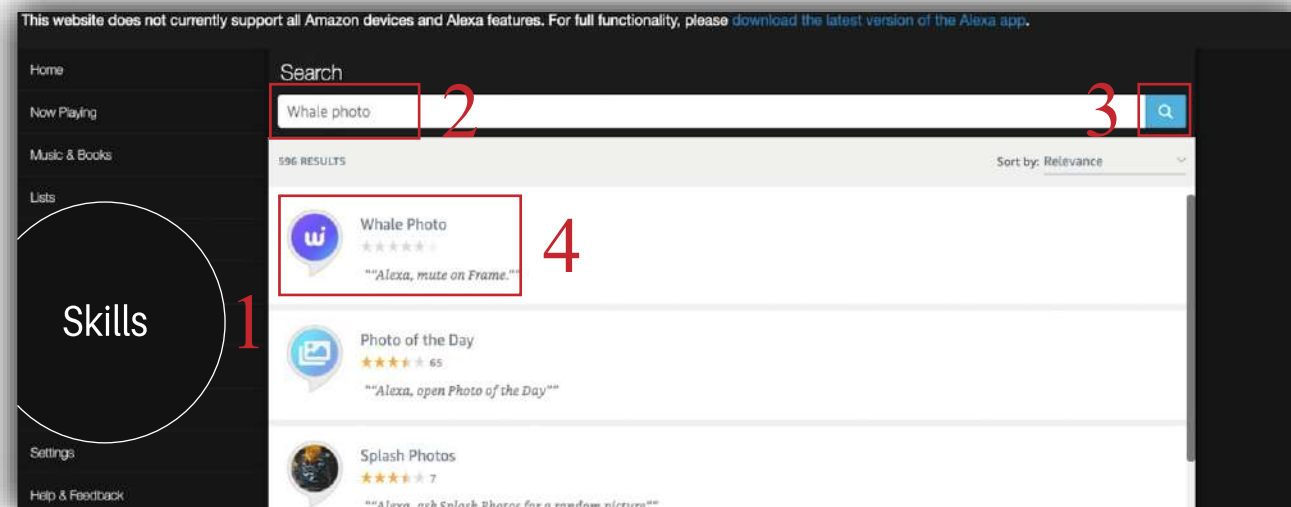
- Open "Amazon Alexa", go to "More-Skill & Games" and search for "Whale Photo".
- Click "Whale Photo" and enter your Whale Photo account to bind the Skill.

- Then, the app will initiate the automatic device search.
- Click "Back" when the process is completed.
- Alexa App to control the photo frame by voice.

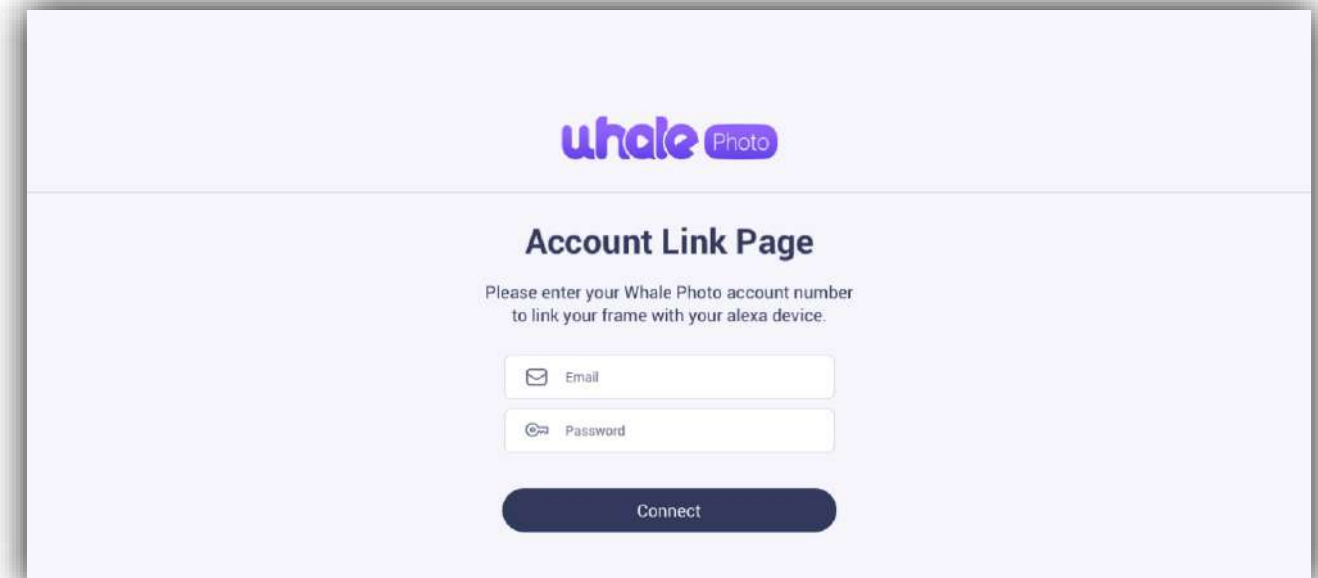
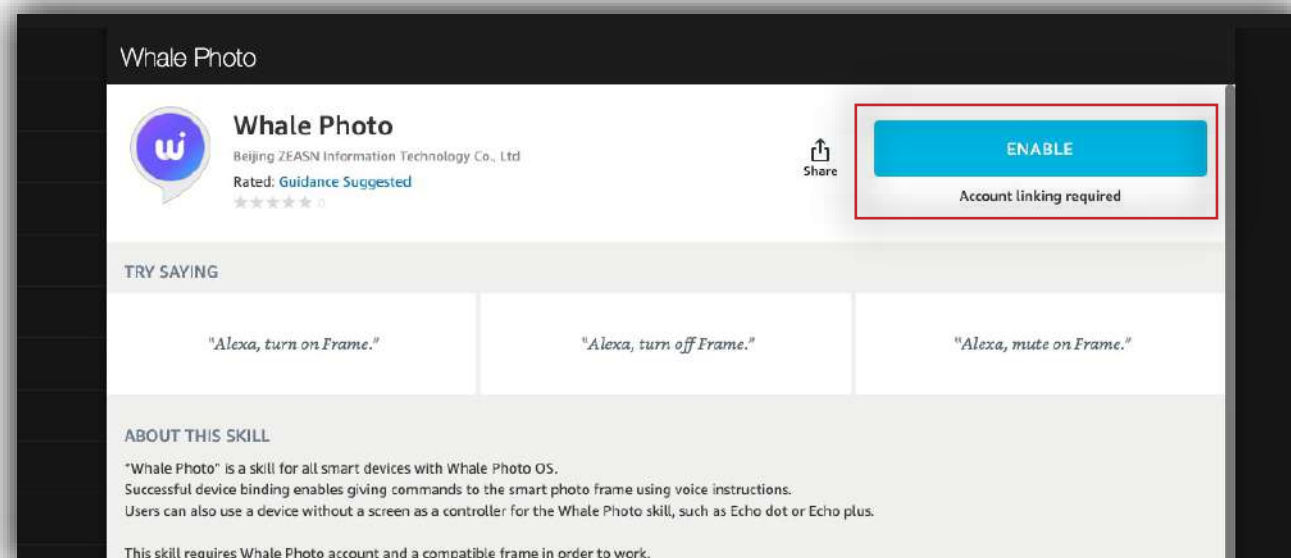


1.2.2 PC bundle

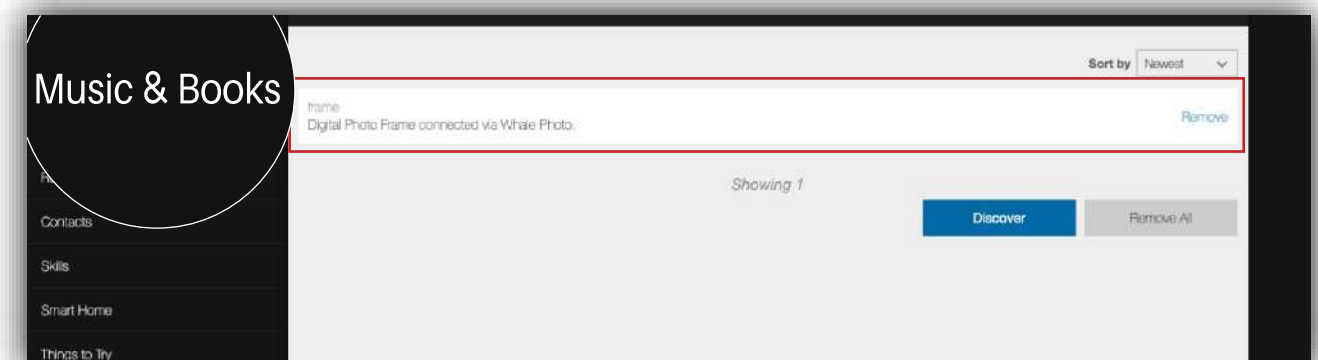
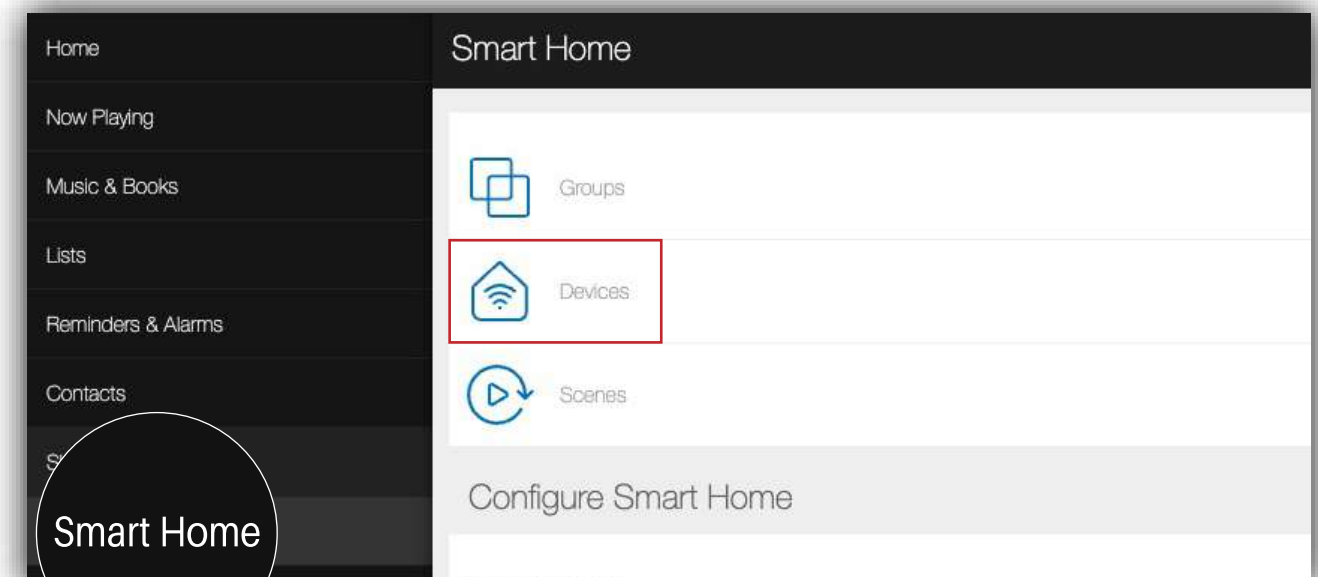
- 1) Go to this URL: <https://alexa.amazon.com/spa/index-.html#cards>;
- 2) Log in accounts;
- 3) Select "Skills" and search for "Whale Photo";



- 4) Go to "Whale Photo" and enter your Whale Photo account for skill binding.



- 5) After successful binding, you can search for devices directly or through Smart Home.



FCC Caution:

This device complies with part 15 of the FCC Rules. Operation is subject to the following two conditions: (1) this device may not cause harmful interference, and (2) this device must accept any interference received, including interference that may cause undesired operation.

Any changes or modifications not expressly approved by the party responsible for compliance could void the user's authority to operate the equipment.

NOTE: This equipment has been tested and found to comply with the limits for a Class B digital device, pursuant to Part 15 of the FCC Rules. These limits are designed to provide reasonable protection against harmful interference in a residential installation. This equipment generates, uses and can radiate radio frequency energy and, if not installed and used in accordance with the instructions, may cause harmful interference to radio communications. However, there is no guarantee that interference will not occur in a particular installation.

If this equipment does cause harmful interference to radio or television reception, which can be determined by turning the equipment off and on, the user is encouraged to try to correct the interference by one or more of the following measures:

- Reorient or relocate the receiving antenna.
- Increase the separation between the equipment and receiver.
- Connect the equipment into an outlet on a circuit different from that to which the receiver is connected.

-- Consult the dealer or an experienced radio/TV technician for help.

To maintain compliance with FCC's RF Exposure guidelines, This equipment should be installed and operated with minimum distance between 20cm the radiator your body: Use only the supplied antenna.

FCC ID: 2A8SI-X15