



深圳市雨盛通讯电子有限公司

Shenzhen Yu Sheng Communications Electronics co., LTD

TEL: +86 0755-28640107

FAX: +86 0755-28694967

# 承认书 APPROVAL

版本: A1

客 户  
CUSTOMER:

品 名 规 格  
DESCRIPTION: 2.4-5.8G

料 号  
PART NO.: YS020-0002X

客 户 料 号  
CUS PART NO.:

日 期  
D A T E: 2022-8-26

呈样签章:

工 程 ENGINEERING DEPARTMENT	品 保 Q C DEPARTMENT	业 务 SALES DEPARTMENT

客户承认签章 :

工 程 ENGINEERING DEPARTMENT	品 保 Q C DEPARTMENT	采 购 PURCHASING DEPARTMENT

※ 客户确认样品附意栏:

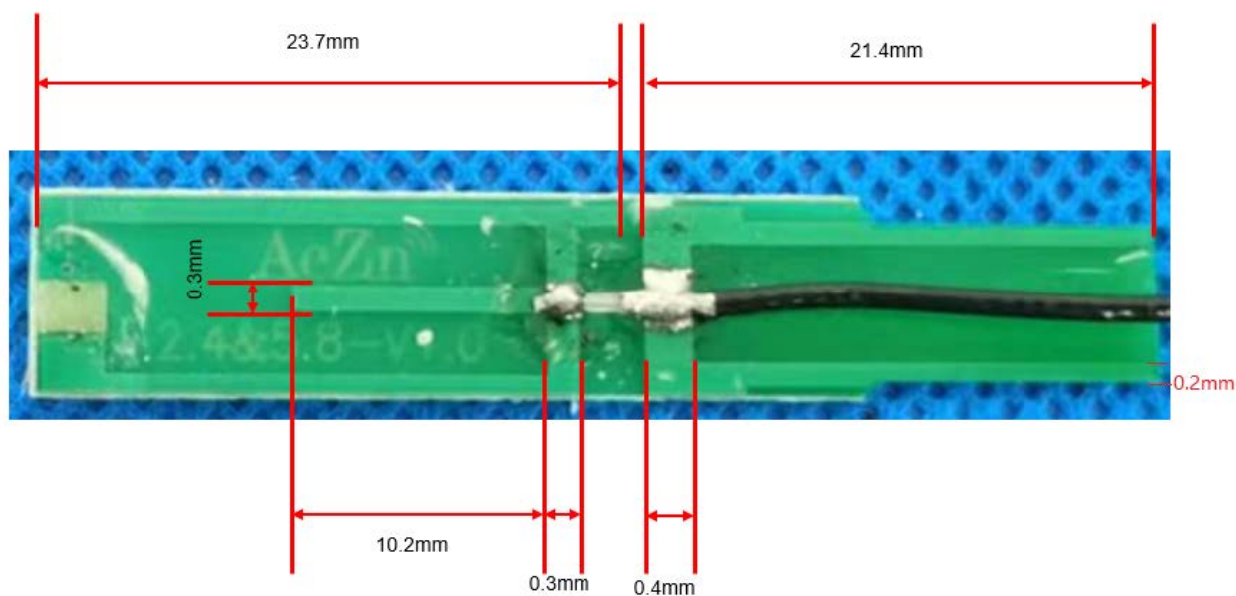
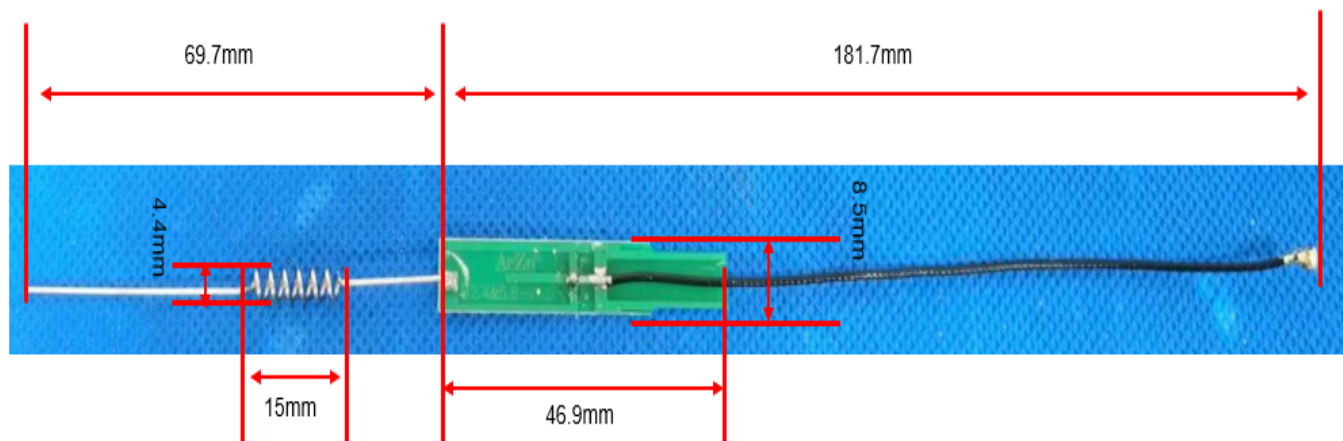
## 电器技术参数

电 性 能 指 标		Electrical Specifications	
频率范围	2400-5800MHZ	Frequency Range	2400-5800MHZ
电压驻波比	$\leq 2.0$	VSWR	$\leq 2.0$
增益	2.4G: 0.02dBi, 5G: 2.25dBi, 5.8G: 3.4dBi	GAIN	2.4G: 0.02dBi, 5G: 2.25dBi, 5.8G: 3.4dBi
输入阻抗	50 $\Omega$	Input Impedance	50 $\Omega$
机 械 指 标		Mechanical Specifications	
天线颜色	黑色	Antenna Color	black
接口形式	SMA	Input connector	SMA
天线长度	109mm	Cable length	109mm
工作温度	-40℃ ~ +85℃	Working Temperature	-40℃ ~ +85℃
工作湿度	20~80%	Working Humidity	20~80%

产品图片:



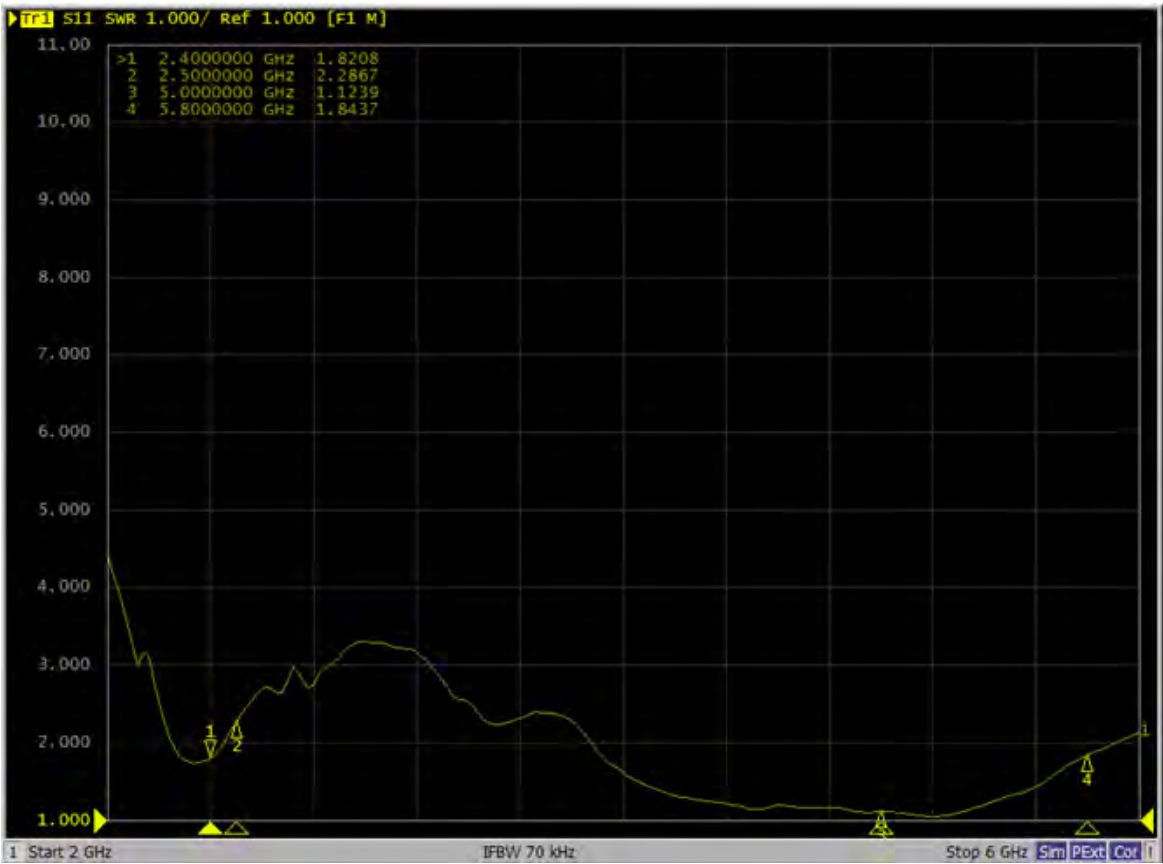
规格图:



3. Characteristics curve

3.1 S11/VSWR

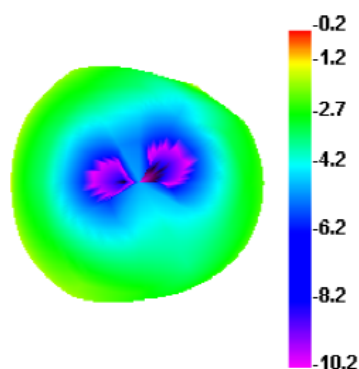
3.1.1 Antenna performance



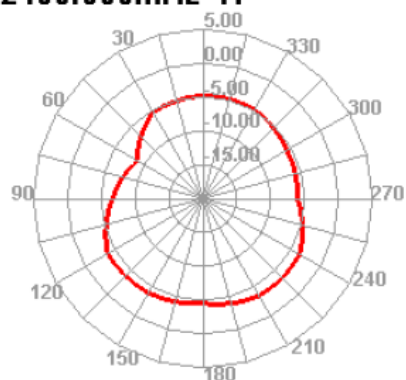
## 4. 2D Radiation characteristics of antenna

### 4.1 characteristics of antenna(VEC 03)

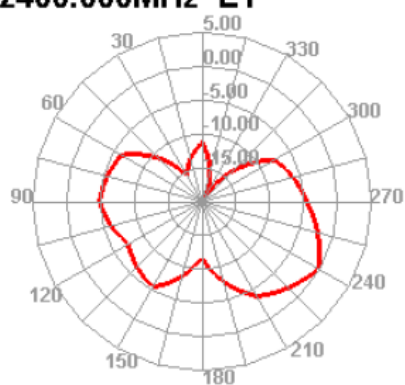
2400.000MHz



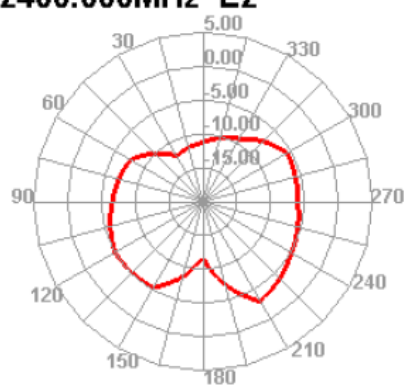
2400.000MHz H



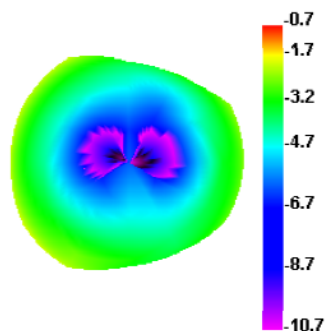
2400.000MHz E1



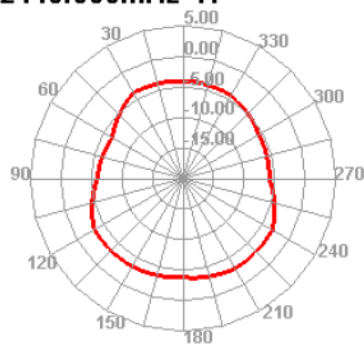
2400.000MHz E2



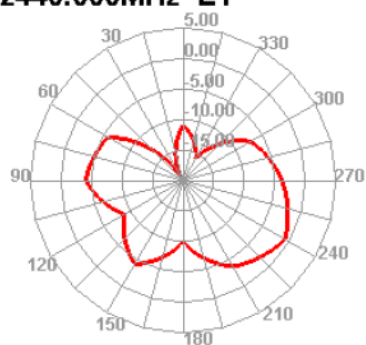
2440.000MHz



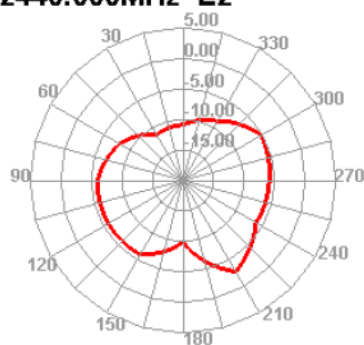
2440.000MHz H



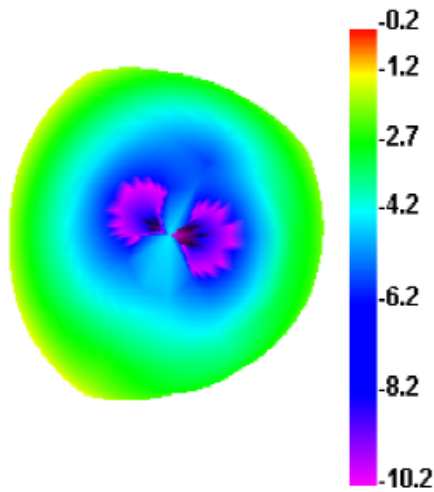
2440.000MHz E1



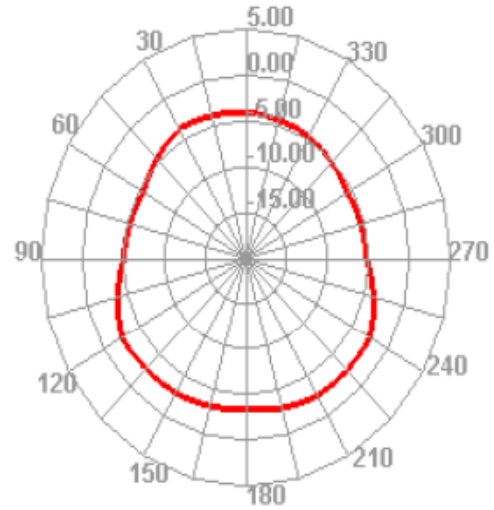
2440.000MHz E2



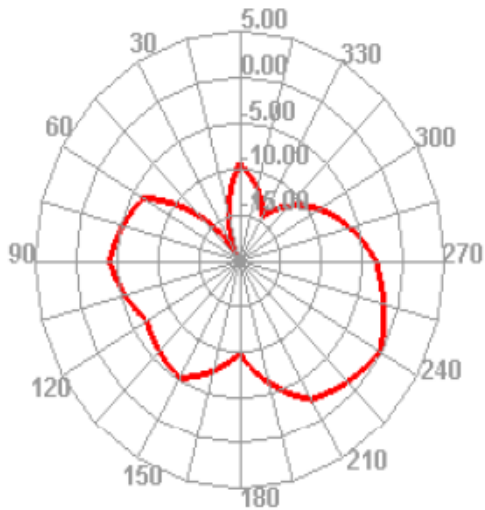
2480.000MHz



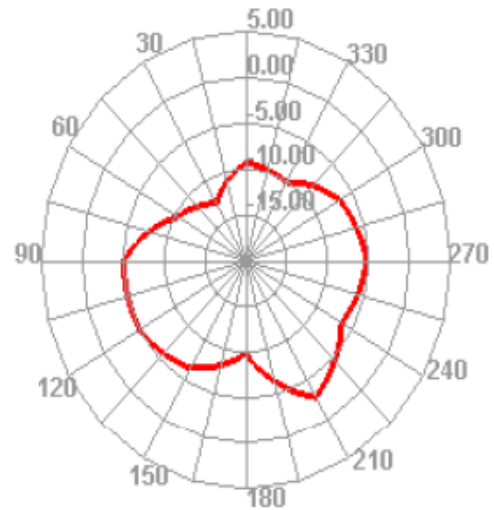
2480.000MHz H



2480.000MHz E1



2480.000MHz E2

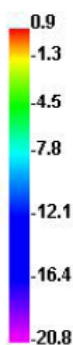
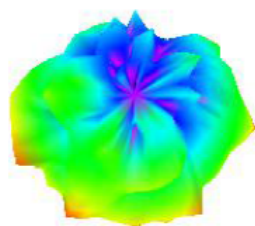


Freq (MHz)	Effi (%)	Gain (dBi)
2400	29.71	-0.18
2410	31.52	0.02
2420	30.04	-0.32
2430	31.28	-0.38
2440	29.87	-0.71
2450	31.43	-0.43
2460	30.87	-0.35
2470	32.31	-0.04
2480	30.84	-0.22
Averagr	30.87	-0.29

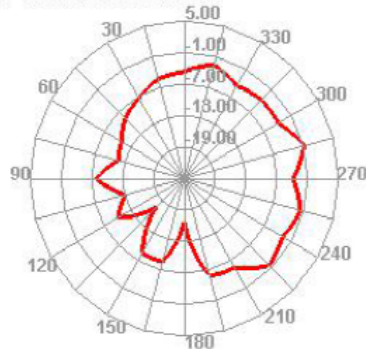


Freq (MHz)	Effi (%)	Effi (dB)	Gain (dBi)	Gain (dBd)
5000	28.24	-5.49	0.87	-1.28
5050	32.86	-4.83	0.3	-1.85
5100	29.95	-5.24	0.41	-1.74
5150	27.9	-5.54	0.89	-1.26
5200	28.09	-5.51	0.26	-1.89
5250	32.93	-4.82	2.25	0.1
5300	35.04	-4.55	2.95	0.8
5350	33.54	-4.74	2.44	0.29
5400	33.22	-4.79	2.33	0.18
5450	27.03	-5.68	1.37	-0.78
5500	26.78	-5.72	0.93	-1.22
5550	23.55	-6.28	0.08	-2.07
5600	31.68	-4.99	1.65	-0.5
5650	30.14	-5.21	0.77	-1.38
5700	35.85	-4.45	2.62	0.47
5750	40.31	-3.95	2.44	0.29
5800	38.14	-4.19	2.2	0.05
5850	50.09	-3	3.4	1.25
5900	41.43	-3.83	2.46	0.31
5950	44.34	-3.53	2.68	0.53
6000	36.5	-4.38	2.64	0.49

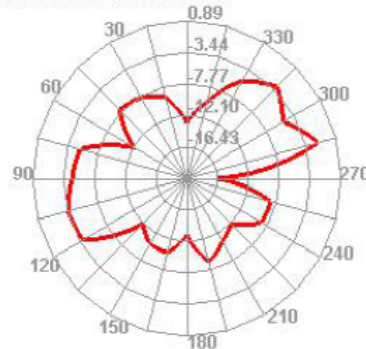
5150.000MHz



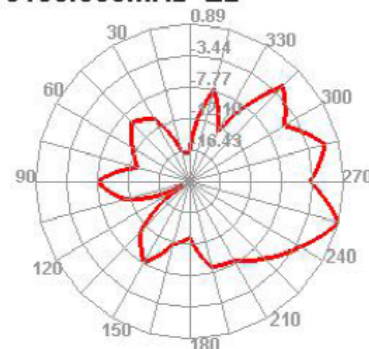
5150.000MHz H



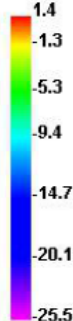
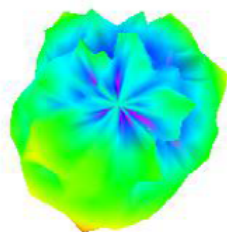
5150.000MHz E1



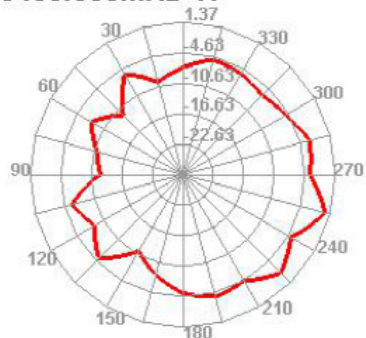
5150.000MHz E2



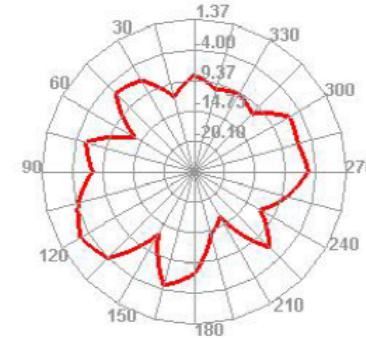
5450.000MHz



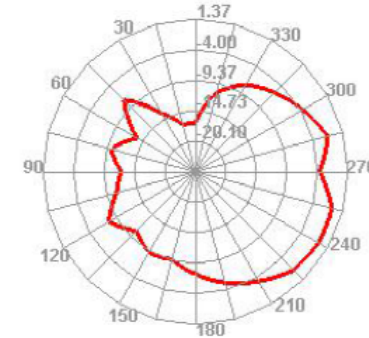
5450.000MHz H



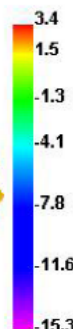
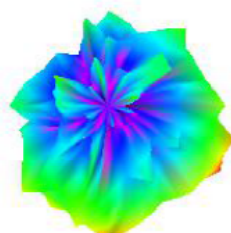
5450.000MHz E1



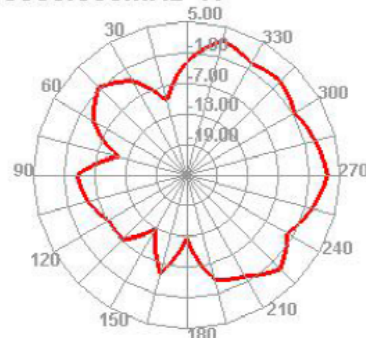
5450.000MHz E2



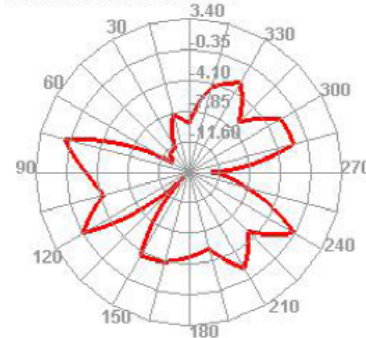
5850.000MHz



5850.000MHz H



5850.000MHz E1



5850.000MHz E2

