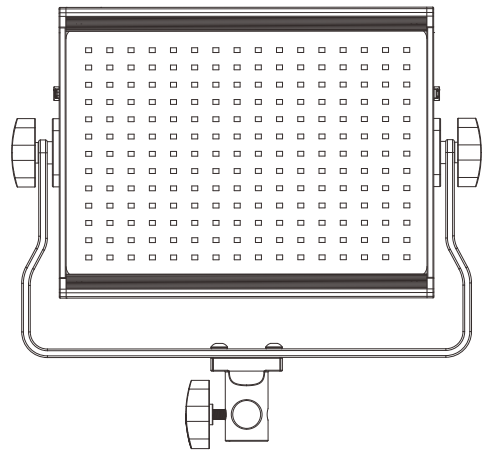


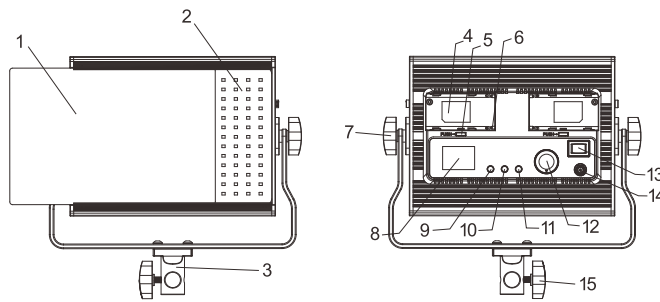
B79B Basis LED Light Use Manual



Safety tips:

To Prevent any damage to your product or personal injury, please read the following safety precaution before operation and keep the manual for all users' looking up anytime.
Before operating this unit, please read the instruction carefully and properly keep, for future reference.

1. Product structure is introduced:



1. Diffuser plate
2. LED panel
3. Fix bracket
4. Battery compartment
5. Battery release button
6. Battery contact spot
7. Angle adjust knob
8. LCD Screen
9. Brightness adjust button
10. Color temperature adjust button
11. Channel SET button
12. Fn Adjust knob
13. Power switch button
14. DC input socket
15. Bracket fix knob

2. Product Feature

This product uses 104pcs 5600K cool LED beads and 104pcs 3200K warm LED beads arranged end-to-end, and uses the latest LED driver technology to provide a wider range of color temperature adjustment, brighter and more powerful illumination, and a more stable and accurate light source. It comes with two battery compartments and an external adapter DC interface, which can be selected by a three-gear boat-shape switch for power supply, making the working time of LED light even longer. It is equipped with a blue backlight LCD display that provides intuitive display of brightness, color temperature, and battery charge information. It also has Bluetooth APP control.

3. Switch ON/OFF operation

1. Li-ion battery as electronics power supply

Insert one or two NP-F series batteries into the battery compartment of this LED light in the correct direction. Flip the power switch to the I end, and the camera light will turn on normally.

2. Use external adapter as electronic power supply

Connect a matched 15V 3A adapter to the DC socket of this light and connect the adapter to the power supply. Flip the power switch to the II end, and the camera light will turn on normally.

3. Switch OFF

When in OFF state, flip the switch to O end, the light will turn off.

4. Parameter Adjust in LCD screen

1. Brightness adjustment

When the light is turned on, press the brightness adjust button, the brightness value in the LCD screen will flicker once, at this time, rotate the function adjustment knob clockwise, the brightness will increase by step size of 1% , until up to 100% max. Turn the function adjustment knob counterclockwise, and the brightness will decrease by step size of 1% until minimum down to 1%.

2. Color Temperature Adjustment

After the light is turned on, press the color temperature adjustment button on the light, and the color temperature in the LCD will blink once. At this time, rotate the function adjustment knob clockwise, and the color temperature will increase by step size of 100K, maximum value up to 5600K. Turn the function adjustment knob counterclockwise, and the color temperature will decrease by step size of 100K, minimum value down to 3200K.

3. Bluetooth Channel Setting

After the light is turned on, press the channel setting button on the light, the group letter displayed in the LCD will blink, use the function adjustment knob to switch between groups A, B and C, press the channel setting button again, the number of channels behind CH will start to blink, then use the function adjustment knob to switch the channels between CH1 and CH 40.

5. APP Operation Guide:

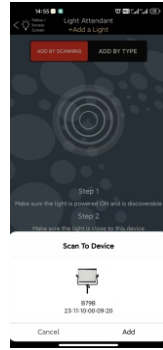


1. Use a mobile phone to scan the above code to download the APP, or search and download the APP "LightAttendant" from Google Play(Android) or APP Store(iPhone iOS)
 2. To turn APP on, you need to agree all necessary permissions and function switches. If Bluetooth is not enabled, it will prompt you to turn on Bluetooth to scan and connect the device. Select " Confirm to turn on Bluetooth" or manually turn on Bluetooth of the mobile phone (iOS requires to turn on manually).
 3. The light is turned on normally.
 4. Click "+" of APP (as Fig. 1) to enter the interface of "Device Scan" and scan the device. After waiting for a few seconds, it will show the paired device picture and device name as in Fig. 2. Click Add to display the interface Fig. 3. When the words "Light status: Paired" shows up , click the interface as Fig.3, then go into the interface like Figure 4. Click "Ch:1/Grp:A" on the upper right of the interface in Figure 4 to select the SAME Grp/CH as the light. By selecting different options on the top right side of the APP, the devices controlled will also be adjusted to corresponding option. Slide the grey block which shows the light status "Paired"(in Fig.3) to the left side, then the interface in Figure 5 will show up. Click "Delete" in Figure 5, the corresponding interface will appear to prompt you to delete the paired device
- Note: Click "Help" on each screen of the APP will show the operation guide.

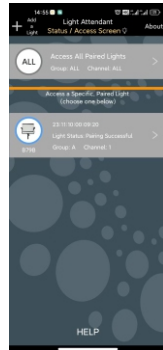
(When a device is not found during scanning, please make sure if the light is turned on or the Bluetooth of mobile phone is turned on. Or please press and hold CH/GRP button on the light for a second to reset the light. Then repeat Step 6.4).



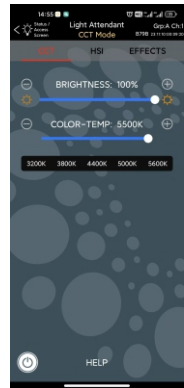
(Figure 1)



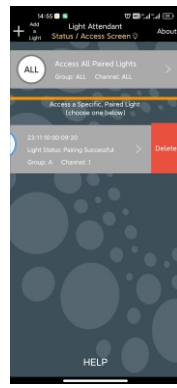
(Figure 2)



(Figure 3)



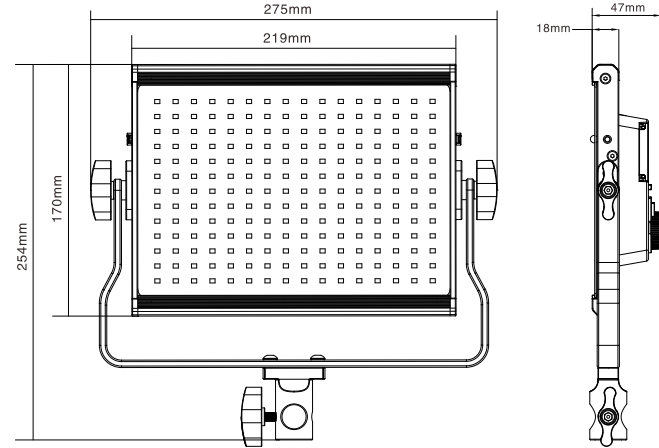
(Figure 4)



(Figure 5)

4. Product dimensions

Unit : mm Tolerance : ±1.0mm L=275 W=47 H=254



5. Product Basic Parameters

No.	Item	Parameter	
1	Application Range	Suitable for studio photography and other light supplement environment	
2	LED Qty.	104pcs 5600K cold beads + 104pcs 3200K warm beads	
3	Max power	40 W ±3W	
4	Max illuminance	2450Lm @3200K ±200Lm, 2950Lm @4400K ±200Lm 2600Lm @5600K ±200Lm	
5	Color temperature	3200K-5600K	
6	CRI	>95	
7	LCD Display	Blue backlit LCD screen	
8	Display Content	Brightness/color temperature/battery capacity level/ Bluetooth icon/Channel+Group	
9	Control method	3-gear boat-shape switch (O-OFF, I-Battery, II- adapter) Fn adjust knob +Button adjust, Bluetooth App control	
10	Diffuser	Vaporific diffuser* 1pc	
11	Bright Adjust	1%-100%	
12	Connecting Socket	DC socket (Positive in + negative out)	
13	Power supply	Battery	2pcs SONY NP - F series batteries
		External adapter	DC15V3A
14	Light Angle	> 120 °	
15	Weight	1200g	
16	Working temperature	0℃~40℃	
17	Storage temperature	-10℃~50℃	
18	Relative humidity	20%~90%	
19	Product size	275X47X254 mm	

6. Caution:

1. This light is not dustproof and waterproof.
2. This light is a precision instrument. Please do not let the product fall to the ground, no collision or strong impact.
3. Do not cover the ventilation hole, otherwise it may increase the internal temperature and lead to fire or accident resulting in accident of product.
4. Do not look directly at the light when it is in white light use . Otherwise, it may cause vision impair.
5. Do not place the product near flammable or volatile liquid, otherwise it may cause fire or smoke.
6. Please make sure the light is switched OFF when it is not used.
7. Please take the battery out of the light after use or when the light is not used.
8. Do not put the product into the storage box after use immediately. Residual heat may damage the white LED. Cool the product thoroughly before placing it in the storage box.

FCC Warning

This device complies with part 15 of the FCC Rules. Operation is subject to the following two conditions: (1) This device may not cause harmful interference, and (2) this device must accept any interference received, including interference that may cause undesired operation.
Any Changes or modifications not expressly approved by the party responsible for compliance could void the user's authority to operate the equipment.
This equipment has been tested and found to comply with the limits for a Class B digital device, pursuant to part 15 of the FCC Rules. These limits are designed to provide reasonable protection against harmful interference in a residential installation. This equipment generates uses and can radiate radio frequency energy and, if not installed and used in accordance with the instructions, may cause harmful interference to radio communications. However, there is no guarantee that interference will not occur in a particular installation. If this equipment does cause harmful interference to radio or television reception, which can be determined by turning the equipment off and on, the user is encouraged to try to correct the interference by one or more of the following measures:
– Reorient or relocate the receiving antenna.
– Increase the separation between the equipment and receiver.
– Connect the equipment into an outlet on a circuit different from that to which the receiver is connected.
– Consult the dealer or an experienced radio/TV technician for help.
FCC RF exposure statement:
The equipment complies with FCC radiation exposure limits set forth for an uncontrolled environment. This equipment should be installed and operated with minimum distance between 20cm the radiator your body.

- Specifications and design are subject to change without notice.