

USER MANUAL

Cloud Share Digital Frame|WiFi

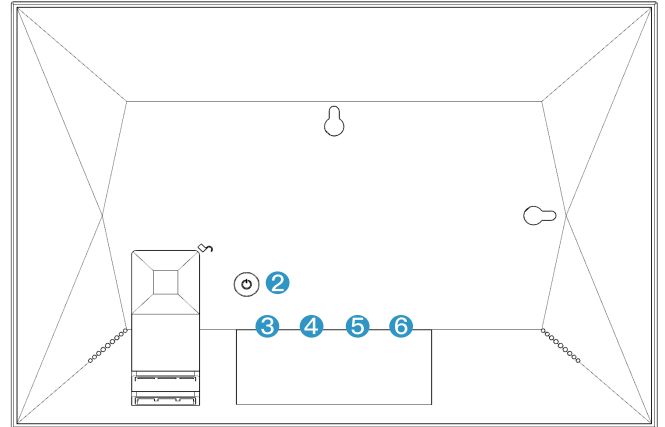
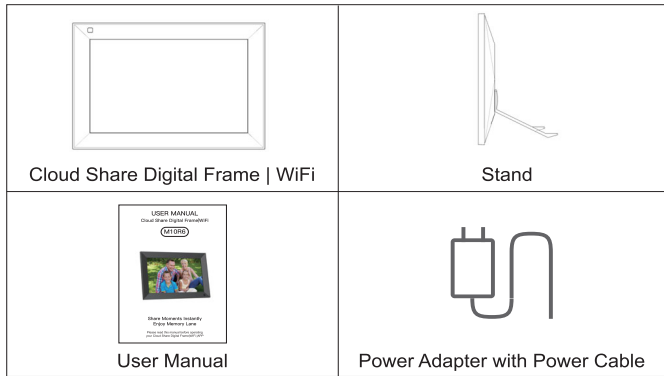
M10R6



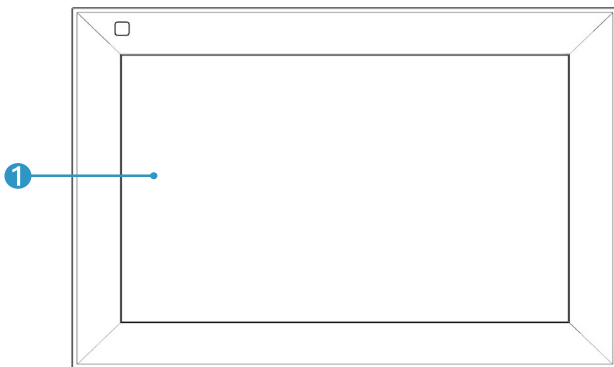
**Share Moments Instantly
Enjoy Memory Lane**

Please read this manual before operating
your Cloud Share Digital Frame|WiFi |APP

CONTENTS OF BOX



FRAME FEATURES



1 CONTENTS OF BOX

10.1 "IPS Touch Screen.

2 POWER

After connecting power adapter, please press and hold power button for approximately 5 seconds (until screen turns on).When it is on, press and hold power button for approximately 3 seconds to access reboot or power off menu. Short press on power button will turn off/on screen (but leave the photo frame in position).

3 RESET

Use a needle or paper clip to reset unit.

4 USB-C

Connect frame to a PC, MAC, Ipad to transfer photos and videos.

5 Micro SD Card

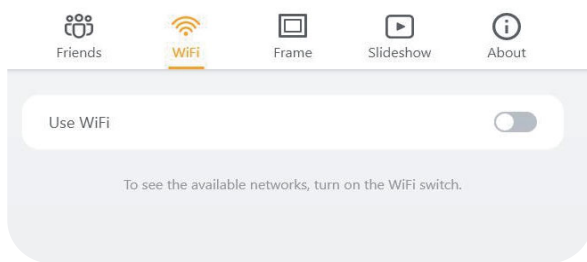
Load external max 128GB micro SD memory card here.

CONTENTS OF BOX

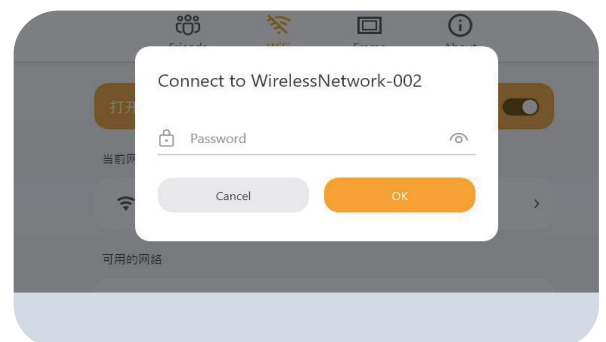
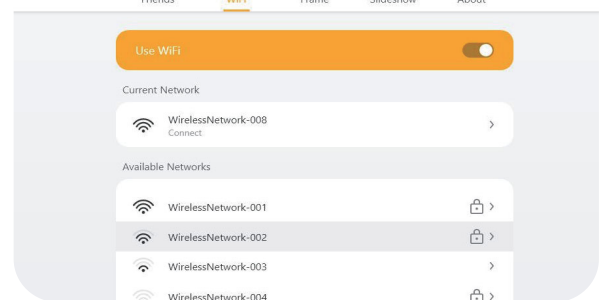
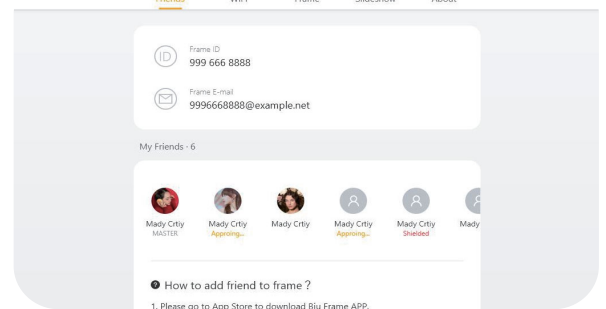
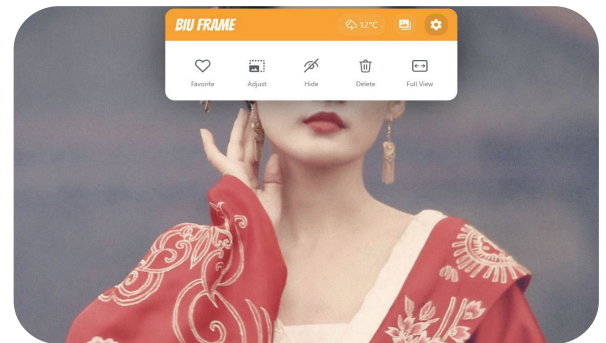
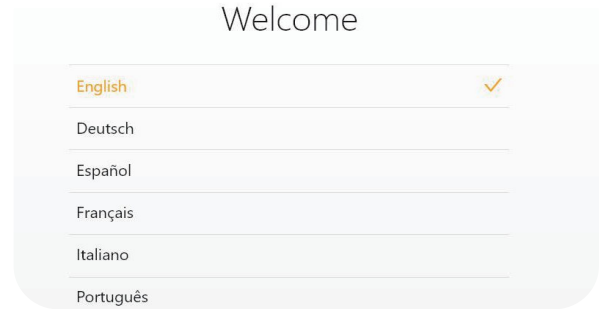
- 1 Activation
- 2 Power on the device
- 3 Wait for automatic boot
- 4 Choose a language

Link wireless settings

- 1 Set up a wireless network connection.
- 2 When playing a photo, click any area of the picture to display the operation panel.
- 3 Click settings button , enter settings page.
- 4 Select “WiFi” tab.



- 5 Click “Use WiFi” switch to turn on the wireless network.
- 6 Select your wireless network from the list and click.
- 7 Enter the wireless network password and click OK.
- 8 The network will be automatically linked.

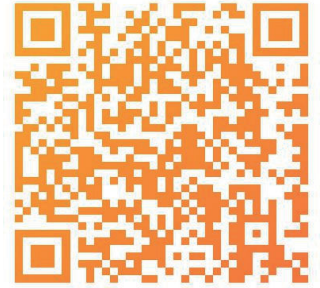


APP SETTING

1 Download Biu Frame APP.

Plan-A Scan the QR code to download APPS.

Plan-B Please search and download in Apple APP Store or Google Play.



Create new account

1 Open Biu Frame APP.

How to install BiuFame APP?

(Please refer to the instructions in 1. 1, download and install in advance).

2 Please click "Sign in" to register.

3 Please click to add your avatar.

You can choose one as your avatar by taking a photo or choose a picture in your album.

4 Please fill in the E-mail, login password, name, etc.

Please fill in a real and valid email address. In order to protect the security of your account and facilitate future forgetting of your password, you need to reset your password and retrieve your account.

5 If you read and agree, please tick the agreement option.

Tips: It is recommended that you read the content of the agreement carefully. We have elaborated many statements in the agreement, which can answer many doubts about your future use.

6 Please click "Sign Up" to complete your account creation.

7 Congratulations, you have a new account with your own frame.

Please remember your E-mail and password, they are very important, you need to log in to the App.

If you need to log in to a new account, please click the back button in the upper left corner to enter the login interface.



xxxx@example.com

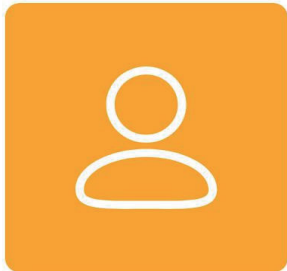
Password

Login

Sign Up

Forgot Password ?

Edit Profile Photo



Take Photo Albums Reset

Save

Log in

1 Please enter Email and password in turn, and click “Log in”.

Tips:

For more security, if your account is already logged in on other machines, This login will automatically log out of your other devices.

2 Successful Login.

If the login is successful, it will automatically enter the main interface.

Tips: If you fail to log in multiple times, please try to click "Forgot password" to reset the new password, and then log in again.



xxxx@example.com

Password

Login

Sign Up

Forgot Password ?

Forget the password

1 Please click “Forgot Password” button.

2 Please enter the E-mail you used when creating a new account and click “send”.

3 The cloud service will send an email with a link to your email. This link will guide you to reset your password. Our cloud service will send an email with a link to your E-mail. This link will guide you through the password reset.

4 Check if your EMAIL has received an email with the subject "ResetPassword".

Note:

That the subject of the email we send is "ResetPassword" and the sender is Service@cloudphontoframe.com. Please confirm and click on the link to prevent from being infringed by forged email.

5 Open the email and click on the link.

6 Enter your new password in the web page that opens.

7 Click “Submit” button to submit.

Tips: For your information security, after the reset is successful, the original reset link will automatically become invalid. If you need to reset the password again, please resend the email.

Forgot Password

Please input your Email:

E-mail

Cancel Send

Forgot Password

We sent you an email to **xxxx@example.com**, please follow the steps in the mail for the rest.

OK

Reset Password

E-mail

999668888@example.com

New Password

the password length must be 6-18 digits.

Confirm Password

Confirm Password

Submit

Reset

Add a photo frame

- 1 Please click "AddFrame" to open the add frame interface.

After the login is successful, if you haven't added any frames, the APP will automatically open the "AddFrame" interface for you to guide you through adding frames.

- 2 Enter "Frame ID" to name the frame.

The Frame ID is a code with 10 digits, After you activate the device, it will be displayed on the last page of the wizard (as shown in the figure). If you have already completed the wizard, please proceed to your desired device one by one: Settings--->Friends, your FrameID will be displayed below.

- 3 Click "OK" button to finish adding.

Tips: If you fail to add, please check that your Frame ID is entered correctly.

Send photos

After adding the frame successfully, You can view your frame on the homepage Click "Add Photos".

- 1 Click "Add Photos" button.

- 2 Choose photo or video.

Tips: Only supports videos up to 15s long, such as ultra-long Biu Frame APP will guide you to crop a suitable segment for sending.

- 3 Click "Send" button.

- 4 Mark key areas for your photos.

This function will help you display the key objects in the verse of the photo frame better. If you move your pet to the middle of the view, the album will be displayed as you preview it in the APP, even if the photo frame is rotated. It is automatically displayed in the center position.

Tips: This function is only used to mark the center position and view area of the photo, and will not crop the photo, so your photo will not lose any details.

- 5 Click "Send" button to send the photo immediately.

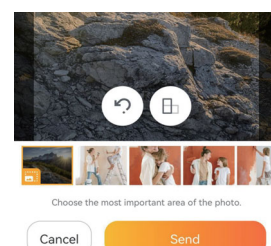
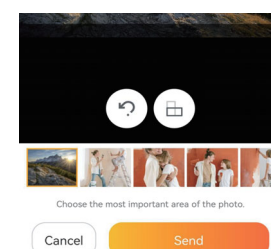
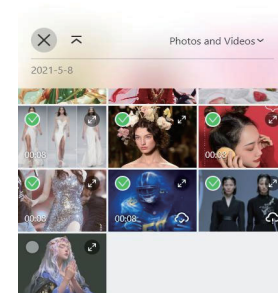
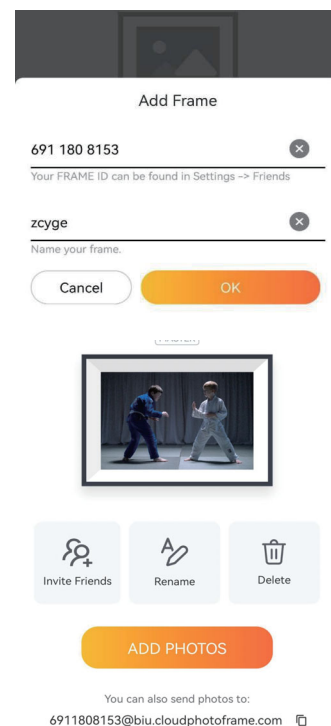
- 6 Sending.



Hey,zcyge luo

You don't have any frame.

+ Add Frame



7 Send complete.

After sending, your photo frame will be able to receive new photos immediately.

Tips: If you do not receive the picture for a long time, please check whether the WIFI network of your photo frame is connected, or whether the network environment is smooth, the photo will be sent to the photo frame within 48 hours, please resend after the deadline.

Tips:

1. Could upload 20 photos collectively.

2. BiuFrame App only provides 5GB free data traffic for uploading photos and videos, if you receive the notification about data need to top up, please contact us with zcyge_support@163.com and we will top up the data traffic unlimited times to get new storage space for free (3000 pictures).

Manage photo frames

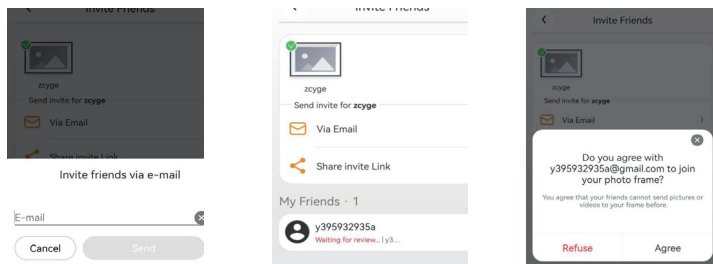
1 Invite friends.

After sending, your photo frame will be able to receive new photos immediately.

After adding the frame, you can invite your family and friends to send wonderful photos to your frame through the invite friends function. Supports sending and clicking emails to send invitations and copying links to invite friends. The latter is more convenient for inviting your friends in social software.

1. Click "Invite Friends" button.
2. Choose a photo frame that needs to be shared.
3. Invite friends via email.

Enter the email address of your friend (support adding multiple emails at the same time, separated by commas) and click "Send" to send the invitation.



Tips:

Your friends or families will receive the invitation via email, please click the link and fill in the information requested, then click "ACCEPT INVATION".

4. Back to APP to "Agree" after friends or families had accepted the invitation
5. Friends or families invite successful.

6. Your friends and families can send photos via email after you agreed.

Tips: Directly click the email address below to send photos, and they appear in seconds!

Photos are limited in 20MB via email.

7. Invite friends by copying the link.

After clicking the button, the sharing application selection node will pop up automatically;

After selecting the application, share the information to various social software;

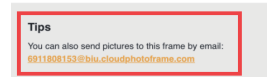
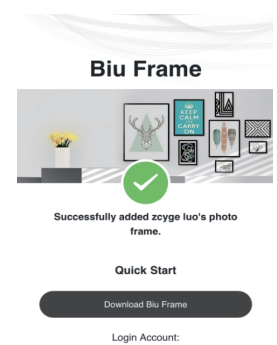
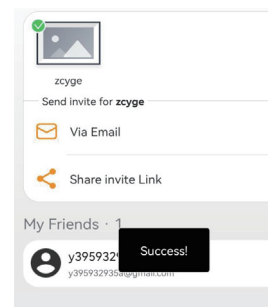
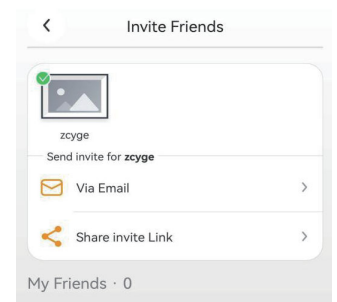
Notify your friends to add as prompted.

2 Name the photo frame.

Click "Rename" and enter a new name, and you can submit it.

3 Remove photo frame binding.

Click "Remove" to remove the binding of this photo frame.



4 Edit name.

1. On the homepage, click on the profile picture in the upper right corner.
2. Select "Rename" in the menu.
3. Modify your First Name and Last Name.
4. Click "OK" to complete the modification.

5 Change password.

1. On the homepage, click the avatar icon in the upper right corner.
2. Select "Password" in the drop-down menu .
3. Fill in "Old Password", "New Password", "Confirm New Password" .
4. Click "OK" to complete the modification.

Photo management

1 When playing a photo, click on any area of the picture to display the completion panel.

2 Click the album to enter the album.

3 Album categories now.

Frame Photos: Contains all photos on the frame (including USB Driver, SD Card)

Friends Photos: Contains all bound friends and your own network sent through.

Videos: Contains all the videos on the photo frame.

Favorites: Contains your tags, favorite photos and videos.

Hidden: Contains all tags, all Hidden photos and videos.

SD Card: Contains photos and videos in the external SD Card device. This item is only displayed when the SD Card is inserted.

4 Enter the album, click the "batch selection" button ,in the upper right corner.

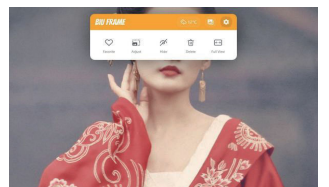
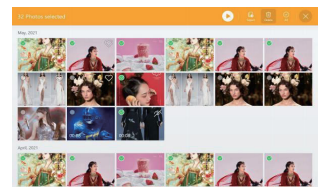
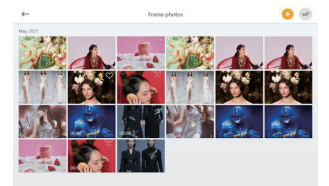
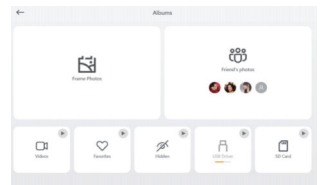
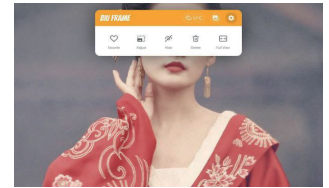
5 After entering batch processing mode, it supports multiple selection of photos.

6 Click "Delete", "Export" or "Play", Batch process the selected photos.

Delete: After clicking, the photo file will be completely deleted from the photo frame and cannot be recovered. Please operate with caution.

Export: After clicking, it will allow you to export the local photos to an external SD card device.

Play: After clicking, it will start to play the selected photo immediately.



Set slideshow effect

1 To play a rally, click any area of the picture to display the operation panel.

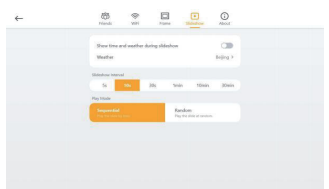
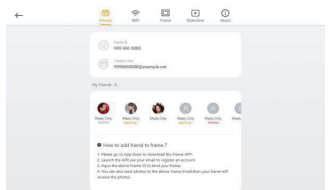
2 Click settings button , enter settings page.

3 Select "Slideshow" tab.

4 Set the main screen weather and time information display.

If you need to play photos to show weather and time information, please open "Showtime and weather During Slideshow".

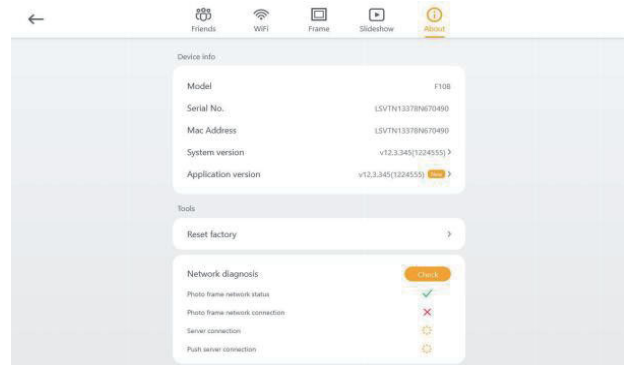
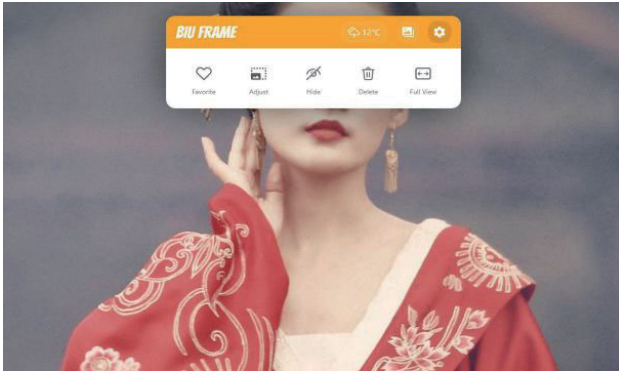
To adjust the currently displayed weather city, click "Weather".



Reset factory

- 1 When playing a photo, click any area of the picture to display the operation panel.
- 2 Click "Setting" button , enter settings page.
- 3 Select "About" tab.
- 4 Click "Reset factory" menu.

Tips: After clicking, all personal information, all photos, videos and all settings on your device will be erased, and cannot be restored, please operate with caution.



BiuFrame X

Play mode

- 1 Original Photo Function: Statically display images.
- 2 Magnification Function: According to the preset magnification situation, magnify part of the picture area.
- 3 Added puzzle play mode, as shown in the figure below, proprietary AI software will group three related portrait photos side-by-side.

Tips: 2 photos with 1 video paired / 3 photos paired in picture puzzle mode.

FCC Warning:

This equipment has been tested and found to comply with the limits for a Class B digital device, pursuant to part 15 of the FCC Rules. These limits are designed to provide reasonable protection against harmful interference in a residential installation. This equipment generates, uses and can radiate radio frequency energy and, if not installed and used in accordance with the instructions, may cause harmful interference to radio communications. However, there is no guarantee that interference will not occur in a particular installation. If this equipment does cause harmful interference to radio or television reception, which can be determined by turning the equipment off and on, the user is encouraged to try to correct the interference by one or more of the following measures:

- Reorient or relocate the receiving antenna.
- Increase the separation between the equipment and receiver.
- Connect the equipment into an outlet on a circuit different from that to which the receiver is connected.
- Consult the dealer or an experienced radio/TV technician for help.

Caution: Any changes or modifications to this device not explicitly approved by manufacturer could void your authority to operate this equipment.

This device complies with part 15 of the FCC Rules. Operation is subject to the following two conditions:

(1) This device may not cause harmful interference, and (2) this device must accept any interference received, including interference that may cause undesired operation.

This equipment complies with FCC radiation exposure limits set forth for an uncontrolled environment. This equipment should be installed and operated with minimum distance 20cm between the radiator and your body.