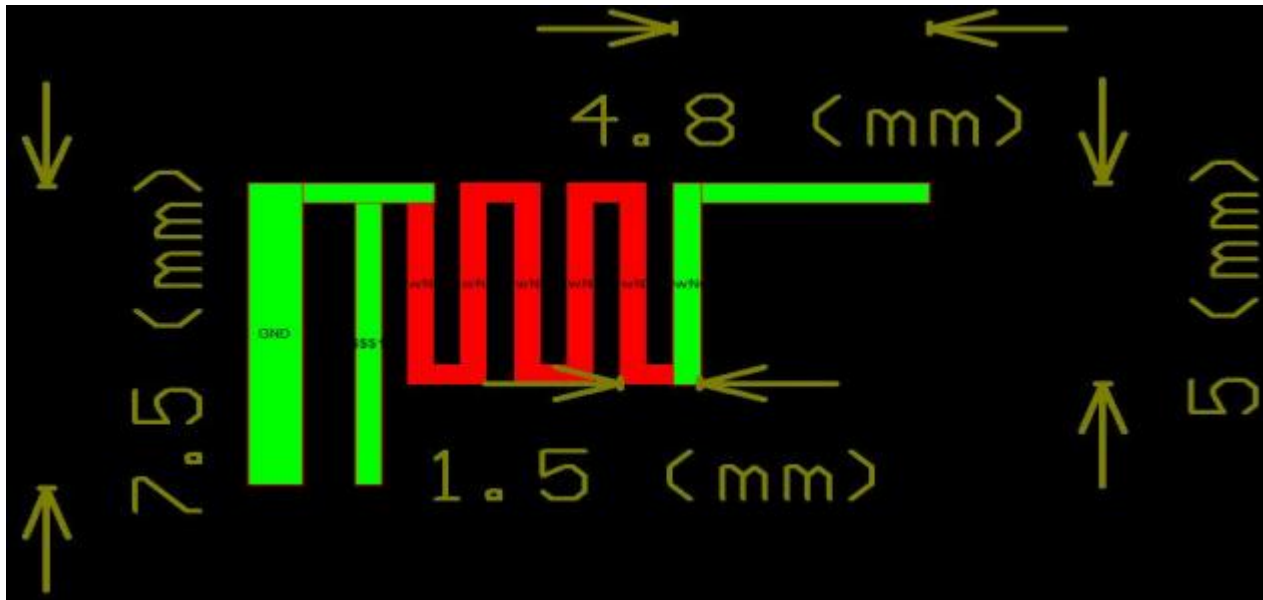


Antenna Specification

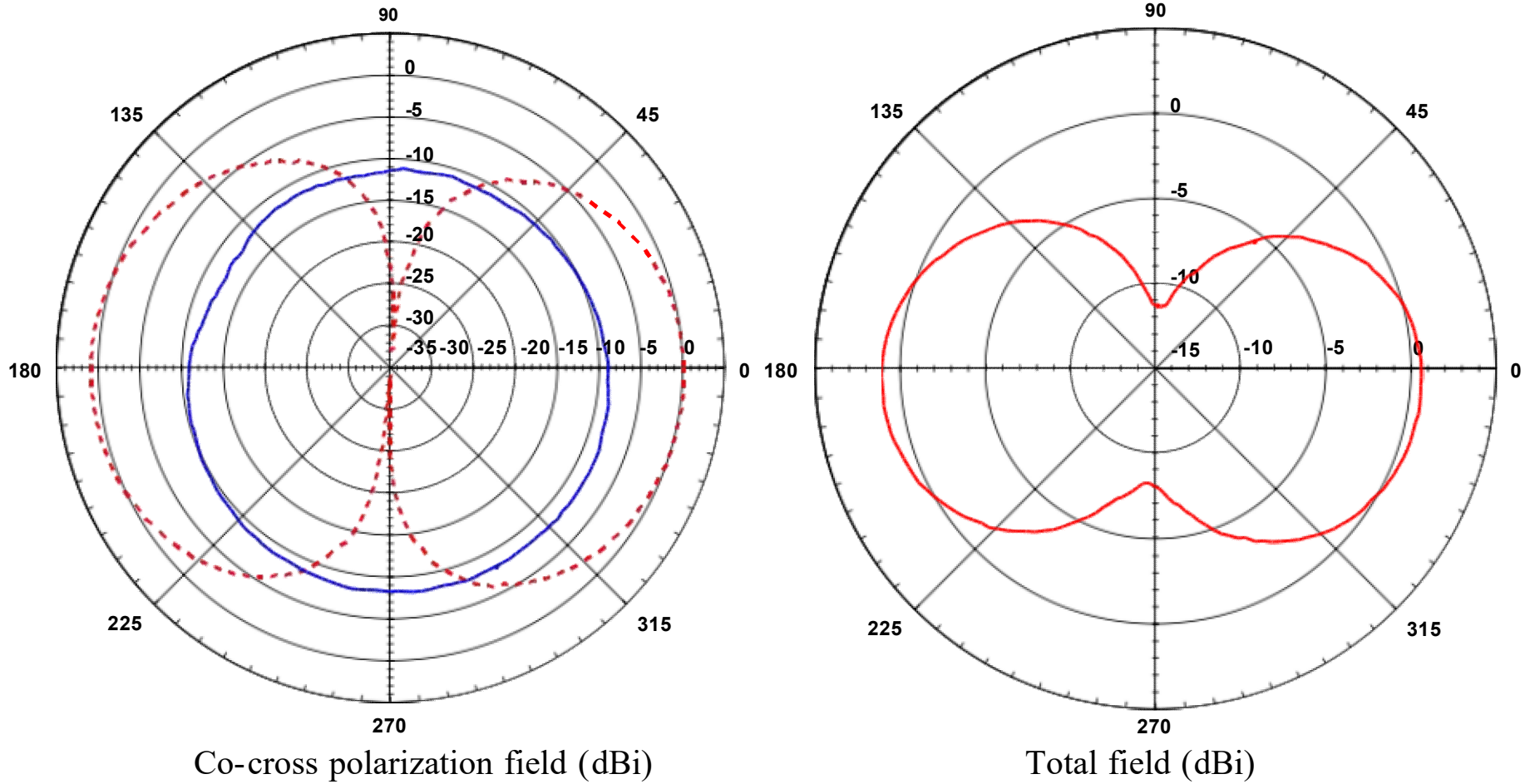
Specifications Summary

ITEM	SPEC.	
Model Name	ISM 2.4 GHz	
Center Frequency	2.402GHz	3.85 dBi
	2.440GHz	3.18 dBi
	2.480GHz	2.80 dBi
MAX. GAIN	3.85 dBi	
Polarization	Horizontal	
Azimuth Beam Pattern	Omni-directional	
Impedance	50 Ω	
Antenna Length	41 mm	

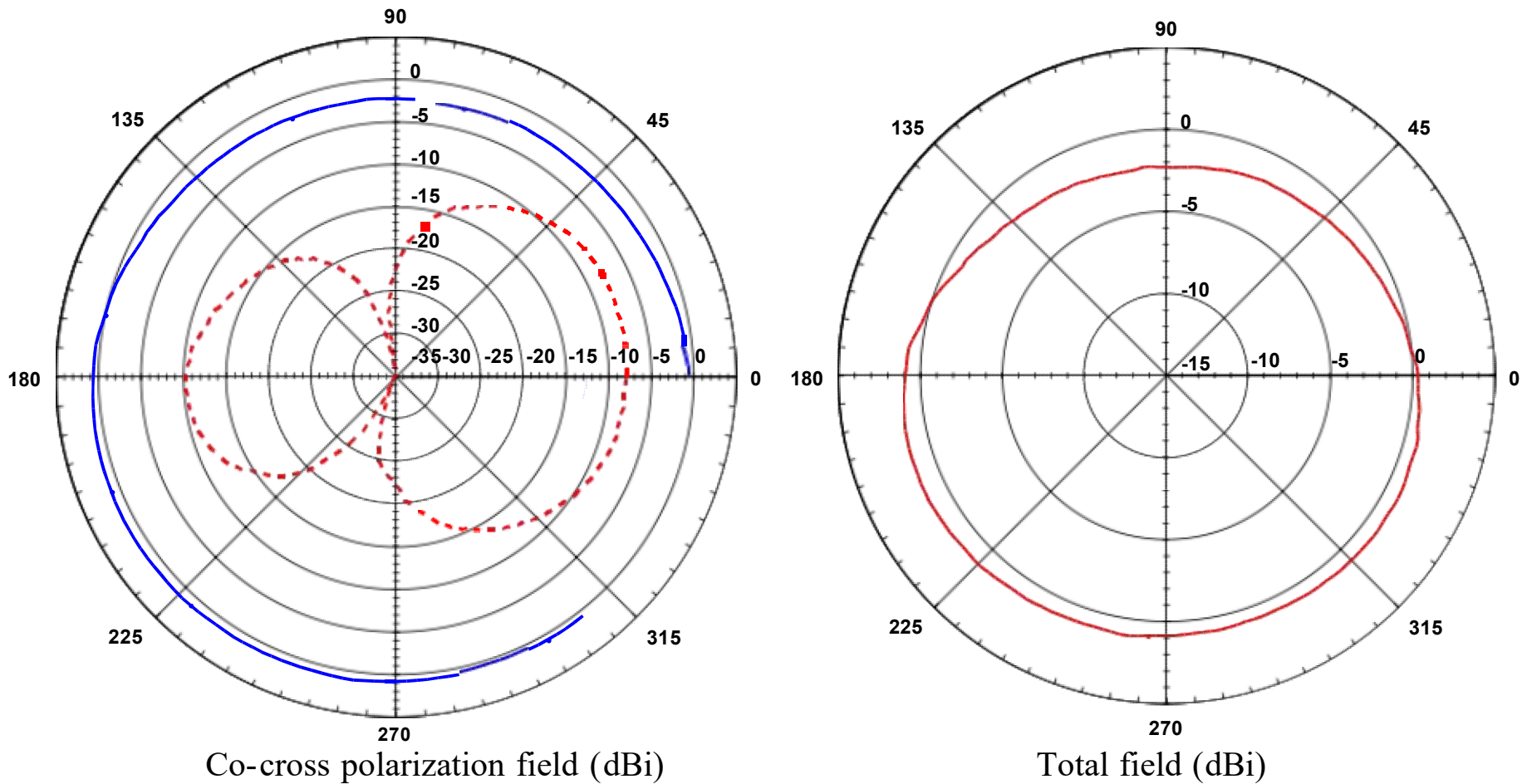
Antenna Photo & Length



Radiation pattern: Antenna 1 . XZ Plane at $f = 2.402\text{GHz}$

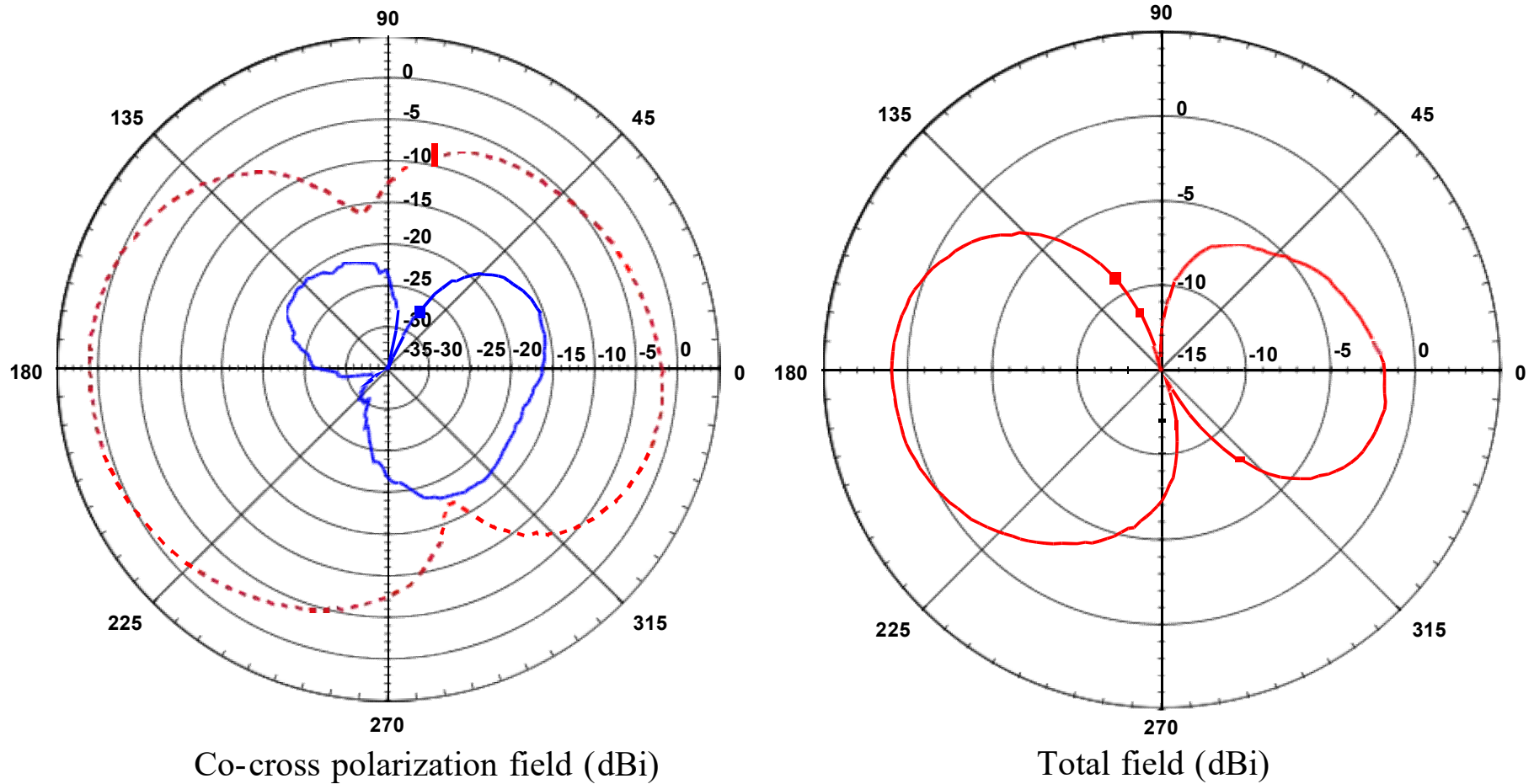


Radiation pattern: Antenna 1. YZ Plane at $f = 2.402\text{GHz}$



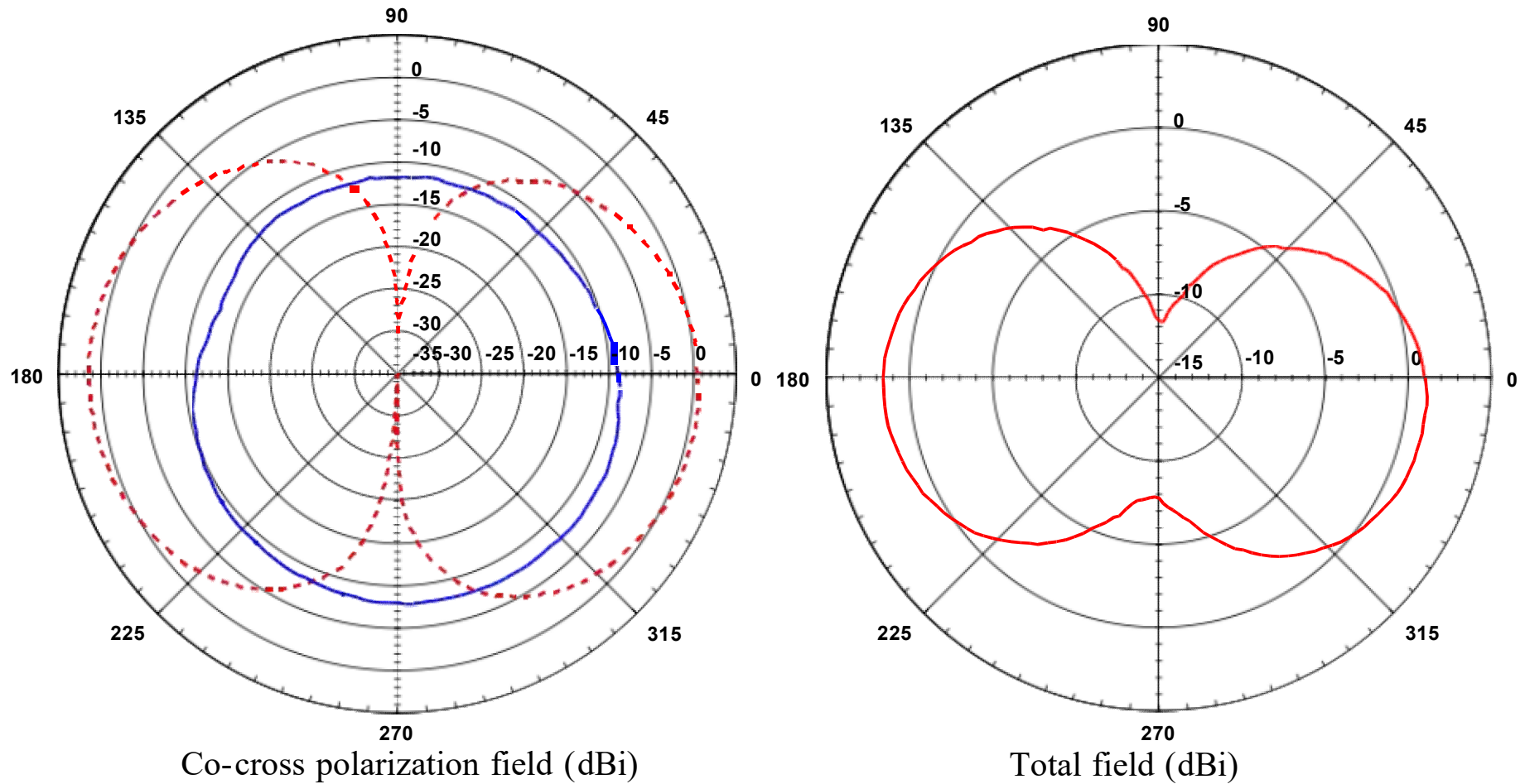
Solid line: vertical polarization
Dash line: horizontal polarization

Radiation pattern: Antenna 1. XY Plane at $f = 2.402\text{GHz}$



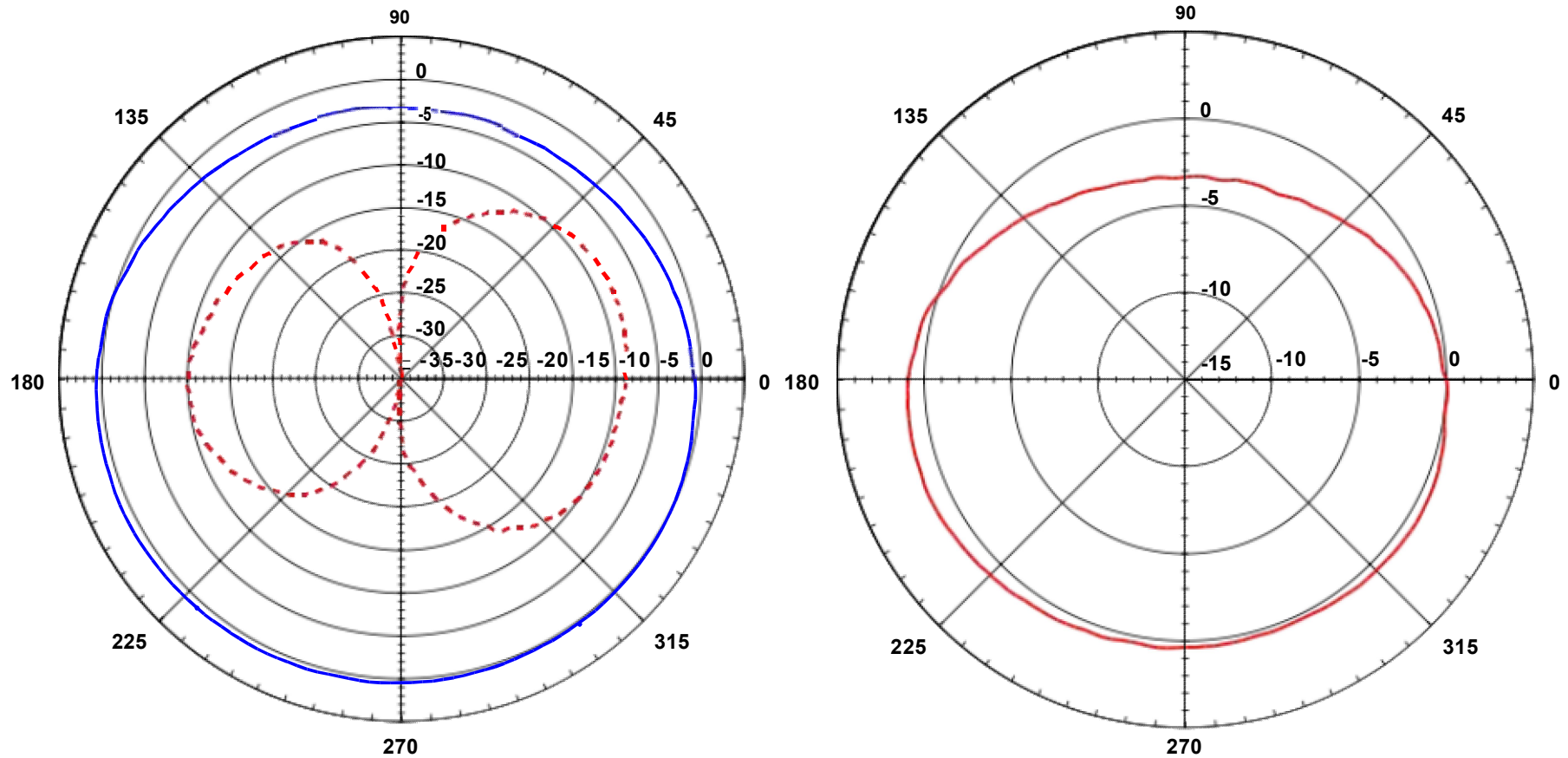
Solid line: vertical polarization
Dash line: horizontal polarization

Radiation pattern: Antenna 1. XZ Plane at $f = 2.440\text{GHz}$



Solid line: vertical polarization
Dash line: horizontal polarization

Radiation pattern: Antenna 1 . YZ Plane at $f = 2.440\text{GHz}$



Co-cross polarization field (dBi)

Total field (dBi)

Solid line: vertical polarization

Dash line: horizontal polarization