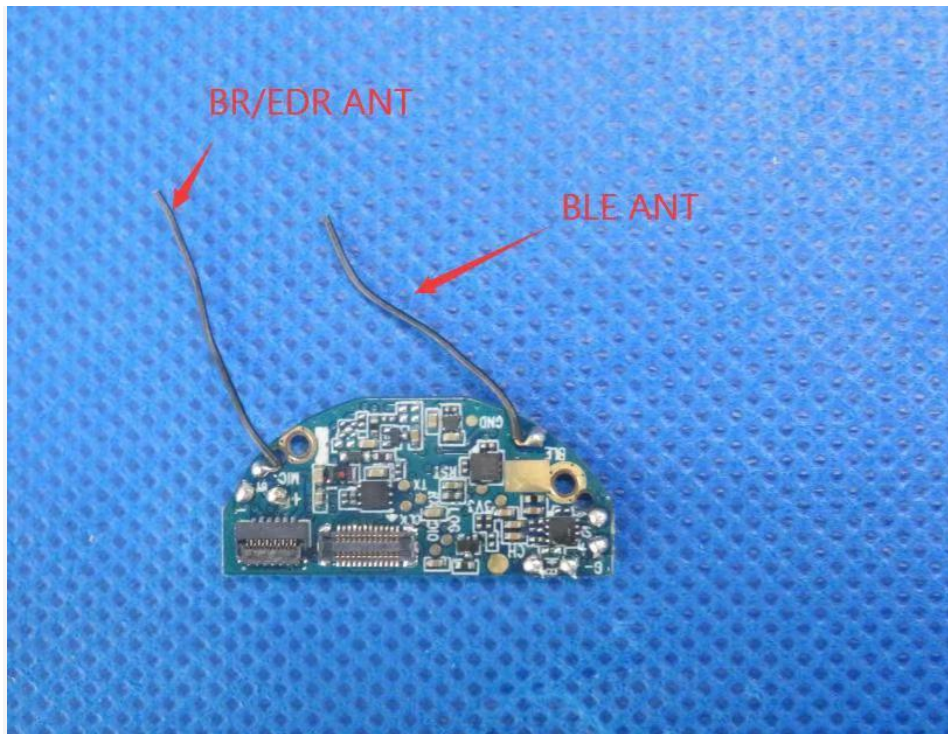


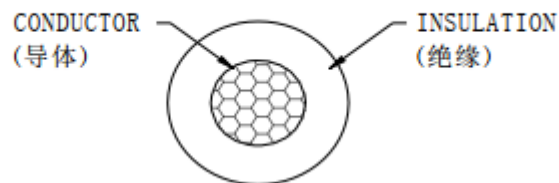
1. Antenna Description:

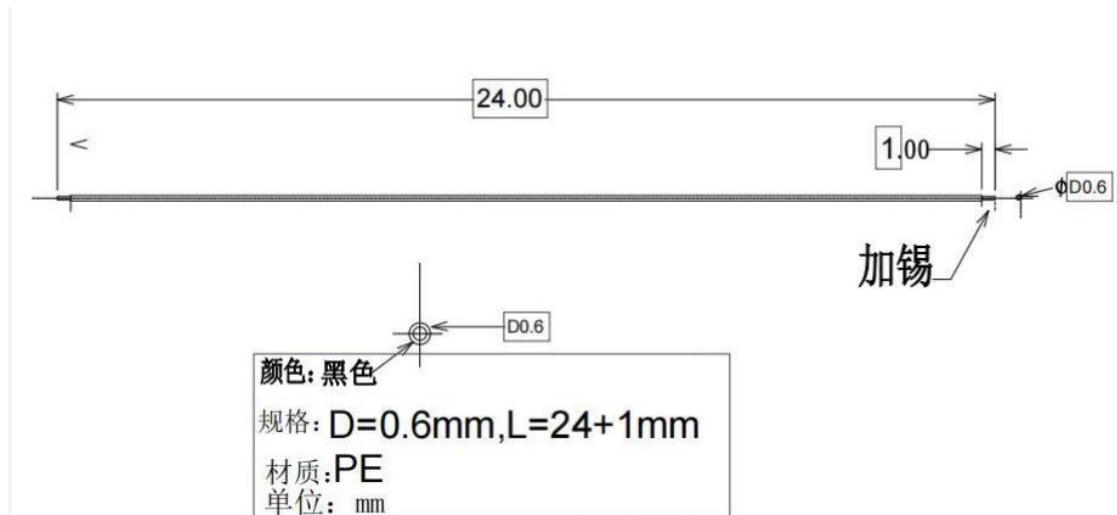
| | |
|-----------------------|---|
| Antenna type/类型 | Wire ANT |
| Size/尺寸 | ϕ 0.65*25mm |
| Frequency range /射频范围 | 2402-2480MHz |
| Manufacturer/制造商 | Shenzhen Tuobu Intelligent Electronic Technology Co., Ltd |
| ANT Peak Gain/峰值增益 | 2.00dBi |

2. Antenna Photo:



Cross-Sectional View(剖面图)





3. Test Equipment & Conditions /测试设备&条件

3.1 Test instrument/测试仪器

VSWR is tested using Agilent E5071B connected to a hand mechanism, and the status is free space.

3.2 Test environment and methods/测试环境和方式

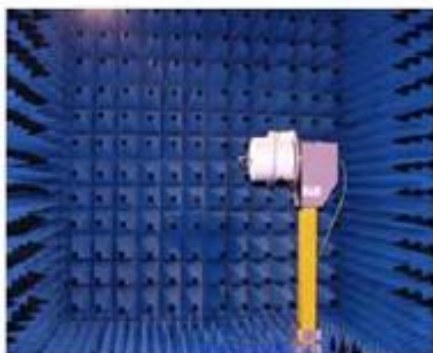
Dark room specifications: ETS-743

TD-SCDMA test equipment: StarPoint SP6010/Agilent 8960

LTE-TDD/FDD-SCDMA test equipment: StarPoint SP8011/CMW500

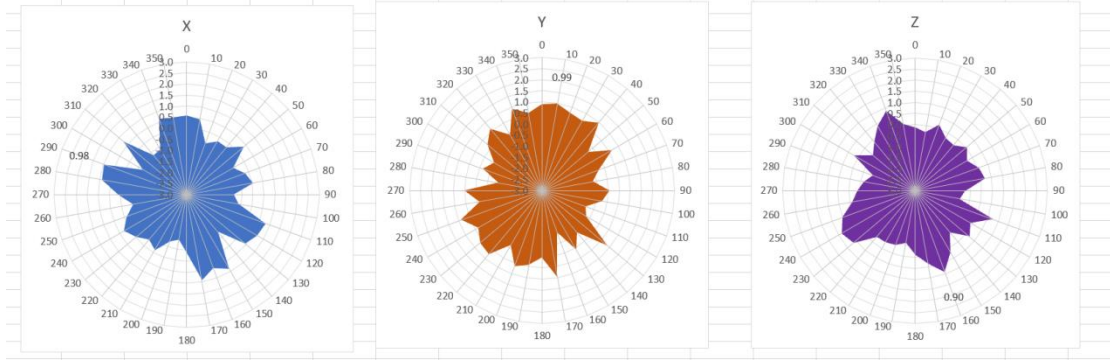
WCDMA/GSM/CDMA test equipment: Agilent 8960

Passive efficiency testing equipment: Agilent Technologies E5071B

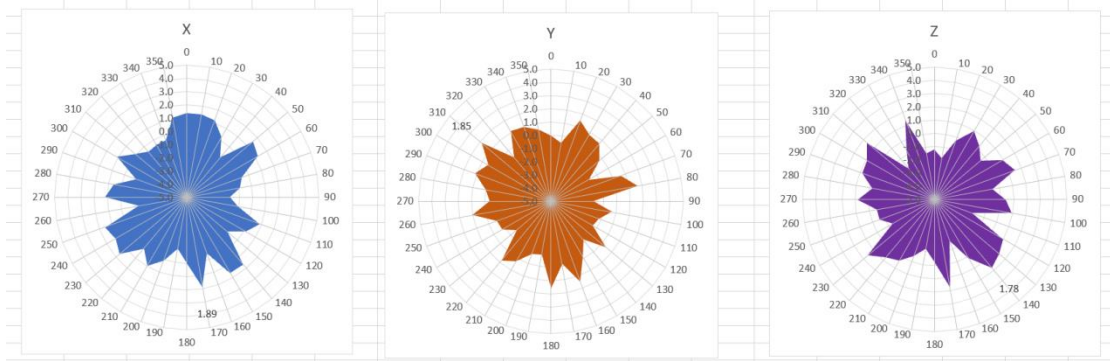


4 . Antenna Radiation Pattern/天线辐射图

2402MHz



2440MHz



2480MHz

