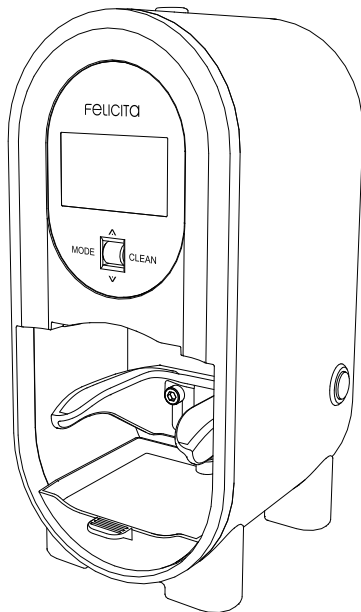


FELICITA | OVAL

Automatic Tamper(OVAL) USER MANUAL



Contents

1 Description - - - - -	3
2 Safety - - - - -	5
3 Installation - - - - -	6
4 Operation - - - - -	8
5 Care and cleaning - - - - -	12
6 Troubleshooting - - - - -	13
7 Warranty - - - - -	14

1 Description

1.1 Intended use

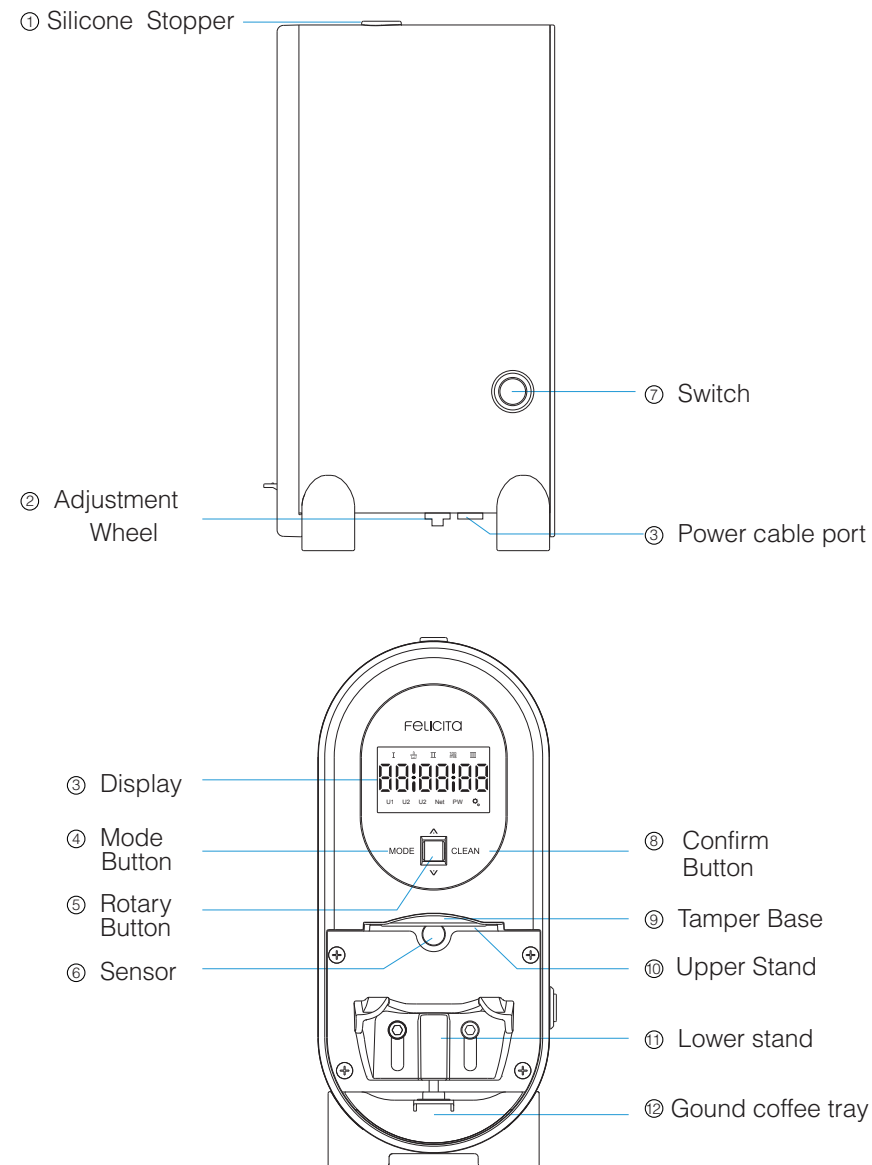
The oval tamper is intended as a fully automatic coffee tamper ,grounded coffee can be tampered with an adjustable force

Any improper use or modification of oval tamper may had consequences for safety ,warranty and proper function

1.2 Technical data

Voltage	100-240V
Frequency	50-60Hz
Output	24V 2.5A
Power	60 W
Dimensions	125*156*292mm
Net Weight	5.2KG
Tamping pressure	2-40KG
Tamper shape	Flat bottom and round bottom
Tamping cycle	1.5-6 second
Tamper diameter	58-58.3mm
Warranty	1 year

1.3 External Components



2 Safety

Read the safety and use instructions carefully before install or use the tamper ,only use the tamper as described in this document and save for future reference

2.1 Oval tamper should only be used for the function which is was designed to tamp grounded coffee ,do not use the tamper to press any other types of food

2.2 The tamper can only used by people aged from 18 years and above,by people with reduced physical,sensory or mental capacities or lack of experience and knowledge if they have received supervision or instructions on the safe use of the tamper and understand the associated risks

2.3 Children should not pay with the tamper ,it may result the tamper getting damaged ,cleaning and maintenance of the tamper should not be carried out by children without supervision

2.4 Do not allowing immerse cables ,plugs or internal or external surfaces of tamper into water or other liquids to avoid electric shock or injury

2.5 Always switch off the tamper and remove the plug from the outlet before maintenance or cleaning ,or if any problems occur ,to avoid electric shock or injury

2.6 Always adjust the lower stand and portafilter ,and check whether the stand is fasten before use

2.7 Operate the tamper on a level and vibration-free surface , avoid drop and bumping ,it could cause tamper damaged

2.8 Never insert your hand or any part of the body between the coffee base and lower stand ,It will be dangerous

2.9 Operate the tamper on a dry condition ,do not near water or clean tamper with water jet ,do not use wet cloth to clean the tamper base ,grounded coffee could stick to the tamper base

2.10 If any component of oval tamper is damaged ,we recommend contacting authorized services personnel to carry out the repair or replacement ,guaranteeing the safety standards

2.11 It is not recommended that you use non-original accessories ,which may cause fire ,electric shock and personal injury

2.12 Do not make any modification or alteration to the oval tamper ,the manufacturer is not responsible for damage caused by failure to observe these instruction

3 Installation

The tamper you received is in operation condition ,you only need to adjust portafilter and lower stand with allen key and switch on the tamper

3.1 Adjusting the porafilter and stand
Make sure the diameter of your portafilter matches that of your oval tamp's coffee tamp ,It is essential that the portafilters is perfectly adjusted to achieve a consistent and level tamping

3.2 Loosen the bolts of the lower stand counterclockwise with allen key **Fig-1**

3.3 Turn the adjustment wheel counter clockwise to pull down the lower stand **Fig-2**

3.4 Insert the portafilter between the upper and lower stand, adjust the clamp to the best height position, make the portafilter as close to the upper stand ,and check whether the portafilter slides in easily, if the portafilter is easy to slide ,it need to adjust the height again **Fig-2**

3.5 After adjusting well the position ,remove the portafilter , fasten the bolts using allen key **Fig-4**

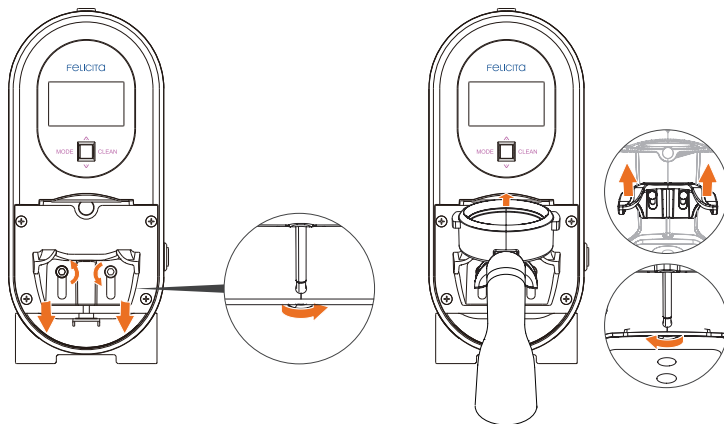


Fig-1

Fig-2

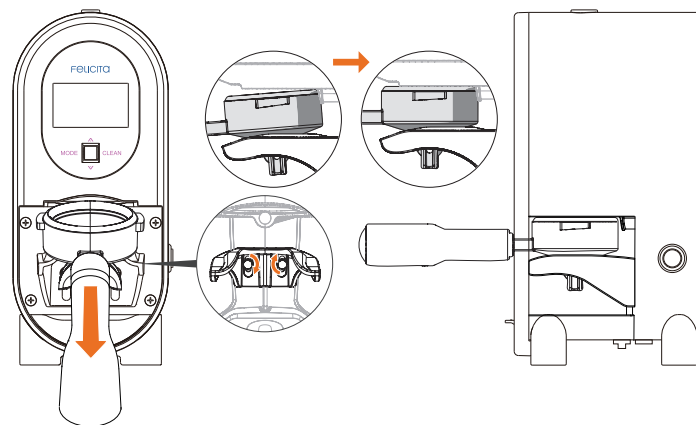


Fig-3

Fig-4

4 Operation

4.1 Use

4.1.1 Turn on the switch

4.1.2 Level the grounded coffee in the portafilter

4.1.3 Insert the portafilter between the upper and lower stand until it reaches the bottom

4.1.4 The tamper automatically starts tamping the coffee while the sensor detects the metal portafilter. The message (☼) appear on the screen **Fig-5**

4.1.5 Wait until oval tamper has pressed the coffee

4.1.6 You can remove the portafilter after the symbol (☼) disappear **Fig-5**

4.2 Tamping force and time regulation

4.2.1 Turn on the switch

4.2.2 The screen will display symbol I, II, III and U1, U2, U3, symbol I, II, III means tamping times, U1, U2, U3 means user data, every user data can be set 1-3 tamping times, data could be set by rotary button **Fig-5**

4.2.3 Pressing mode button, symbol I will blink, you could choose tamping times I, II or III by rotary button, then set up the force as you required, Force adjustment could be steps of 1kg in the range from 2KG-40KG

4.2.4 Time symbol will appear after you set up the force, then you can set up the pressing time for every force by rotary switch, tamping time could be adjusted from 0.1-1 sec.

4.2.5 For example, you set 3 tamping times at user data U1, first tamping force I is 5KG, second tamping II force is 20KG, third tamping III force is 30 KG, time I is 0.2 sec, time II is 0.5 sec, time III is 1 sec **Fig-6**

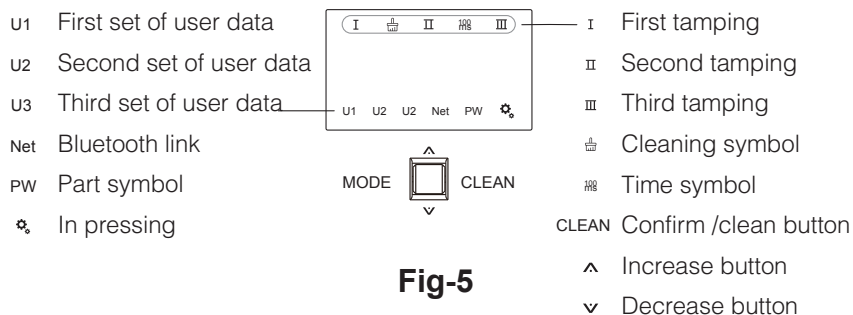


Fig-5

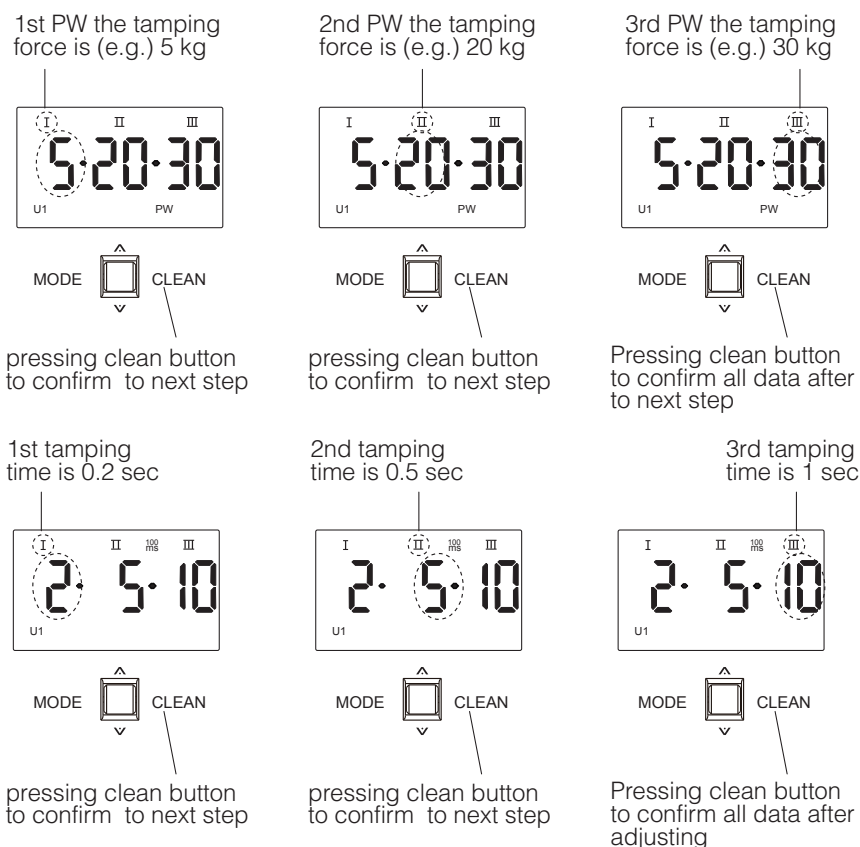


Fig-6

4.3 Cleaning mode (Deep cleaning)

For a correct tamping consistency ,daily cleaning of the tamping base is recommended

4.3.1 Press clean button for 3 second ,the tamper base moves down in cleaning position

4.3.2 Remove the silicone stopper

4.3.3 Unscrew the tamper base bolt by turning the allen key counter-clockwise and remove the bolt **Fig-7**

4.3.4 Unscrew the tamper base by turning it counter - clockwise **Fig-8**

4.3.5 Clean the tamper base using a brush or dry cloth

4.3.6 Screw the tamper base back by turning it clock wise **Fig-9**

4.3.7 Screw the bolt back by turning the allen key clockwise **Fig-10**

4.3.8 Place back the silicone stopper

4.3.9 Press clean button again to return the tamper base to its idle position

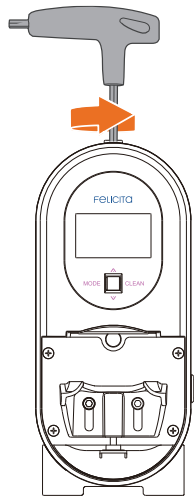


Fig-7

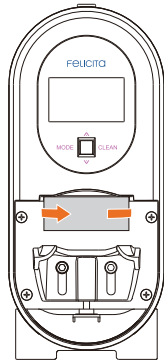


Fig-8

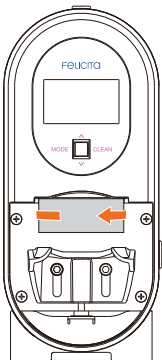


Fig-9

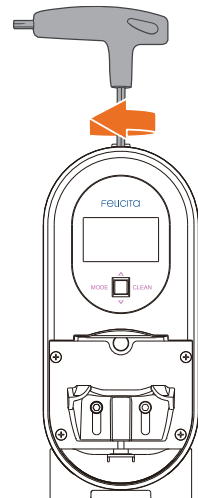


Fig-10

5 Care and cleaning

Your oval tamper is in use , now you only need to care the tamper to creating perfect coffee

5.1 Clean the outer covering with a damp cloth

5.2 Clean the tamper bottom with dry cloth and sensor with brush every day

5.3 Clean the whole tamper base and upper stand interspace when tamper base is removed with dry cloth every week ,do not use wet cloth to clean the tamper base , grounded coffee will stick to the tamper base

5.4 Deep cleaning the tamper base (see operation of 4.3)

5.5 Store the tamper indoors in a dry and secure location , out of reach of children

6 Troubleshooting

Problem	Cause	Solution
Tamper base does not lower	Tamper power is off	Make sure the tamper is connected to the power socket and switch is on
	The stand is too low and the portafilter had not detected	Adjusting the stand,bring it as closer to the top
The tamping is not strong enough	The tamping force is was set too low	Select higher force using the quick Rotate button
	The stand is too low and it can not exert enough force	Adjusting the stand,bring it as closer to the top
The tamping is too strong	The tamping force has been set too high	Select lower force using the quick Rotate button
The tamped coffee is not leveled after tamping	The coffee grounds are not leveled before using the tamper	Level the ground coffee before tamping
	The portafilter is not fit wiggles during tamping	Adjusting and fixed portafilter
Ground coffee sticks to the tamper base	Tamper base is wet ,greasy or dirty	Dry or clean the tamper base
Tamping does not start but the clean model is working properly	Sensor does not detect portafilter for the protafilter is not inserted completely	Adjusting portafilter stand
Tamping does not start while the oval tamper is on and the display is working	The sensor is faulty	Contact with dealer to replace the sensor
The tamper does not start, the display does not work	The power cable is not inserted in the oval tamper	Plug the cable into the oval tamper
	The power cable is not plugged into the socket	Plug the cable into the socket

7 Warranty

The product you purchased has 1 year warranty from the date of purchase,the warranty will not cover any breakages or wear and tear damage such as scratched ,dents ,stains or discoloration to all surfaces or other damage that does not impair the function of the tamper ,even though the oval tamper will be repaired or replaced free of charge ,Customers are still responsible for the full shipping cost of returning the product to be repaired, as well as the full shipping cost and related costs for returning the product after repair.in order to avoid damages during the product return by correctly packing the oval tamper ,use the original package to return the oval tamper

Product name	Oval automatic tamper		
Serial number			
Purchase date			
Purchase address			
Customer name			
Contact phone			
Contact address			
Warranty period	1 year		
Maintenance date	Fault description	Maintenance description	Maintenance result

Note : In the following cases ,even within the warranty period ,no free warranty can be provided ,but a paid warranty can be implemented

- Damage caused by the use ,maintenance and storage not in accordance with the instructions
- Due to improper operation ,such as abnormal power supply or damage caused by breakage (drop ,etc.)
- Damage caused by disassembly by unauthorized maintenance personnel
- Failure to present this maintenance card and valid purchase invoice
- Damage caused by force majeure factors (such as earthquakes ,fires ,lightning ,floods)
- The information recorded on the warranty does not conform to the product label or is altered
- The manufacturer is not liable for consecutive or secondary damages
- The warranty does not cover costs resulting for repairs conducted by non-authorized personnel

FCC Caution:

This device complies with part 15 of the FCC Rules. Operation is subject to the following two conditions: (1) this device may not cause harmful interference, and (2) this device must accept any interference received, including interference that may cause undesired operation.

Any changes or modifications not expressly approved by the party responsible for compliance could void the user's authority to operate the equipment.

NOTE: This equipment has been tested and found to comply with the limits for a Class B digital device, pursuant to Part 15 of the FCC Rules. These limits are designed to provide reasonable protection against harmful interference in a residential installation. This equipment generates, uses and can radiate radio frequency energy and, if not installed and used in accordance with the instructions, may cause harmful interference to radio communications. However, there is no guarantee that interference will not occur in a particular installation.

If this equipment does cause harmful interference to radio or television reception, which can be determined by turning the equipment off and on, the user is encouraged to try to correct the interference by one or more of the following measures:

- Reorient or relocate the receiving antenna.
- Increase the separation between the equipment and receiver.
- Connect the equipment into an outlet on a circuit different from that to which the receiver is connected.
- Consult the dealer or an experienced radio/TV technician for help.

To maintain compliance with FCC's RF Exposure guidelines, This equipment should be installed and operated with minimum distance between 20cm the radiator your body: Use only the supplied antenna.

FCC ID: 2A8MV-FEL

 www.felicitacoffee.com

 info@felicitacoffee.com