
Declaration on model difference

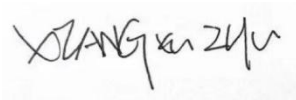
We the undersigned hereby confirm that these models are identical, and all models have the same RF module, Antenna, schematics and component. Only different on model name and Appearance color, Has been shown in the external photo file.

The principle diagram of the left and right headphones is the same, only there are differences in the wiring and control software, and both headphones are tested.

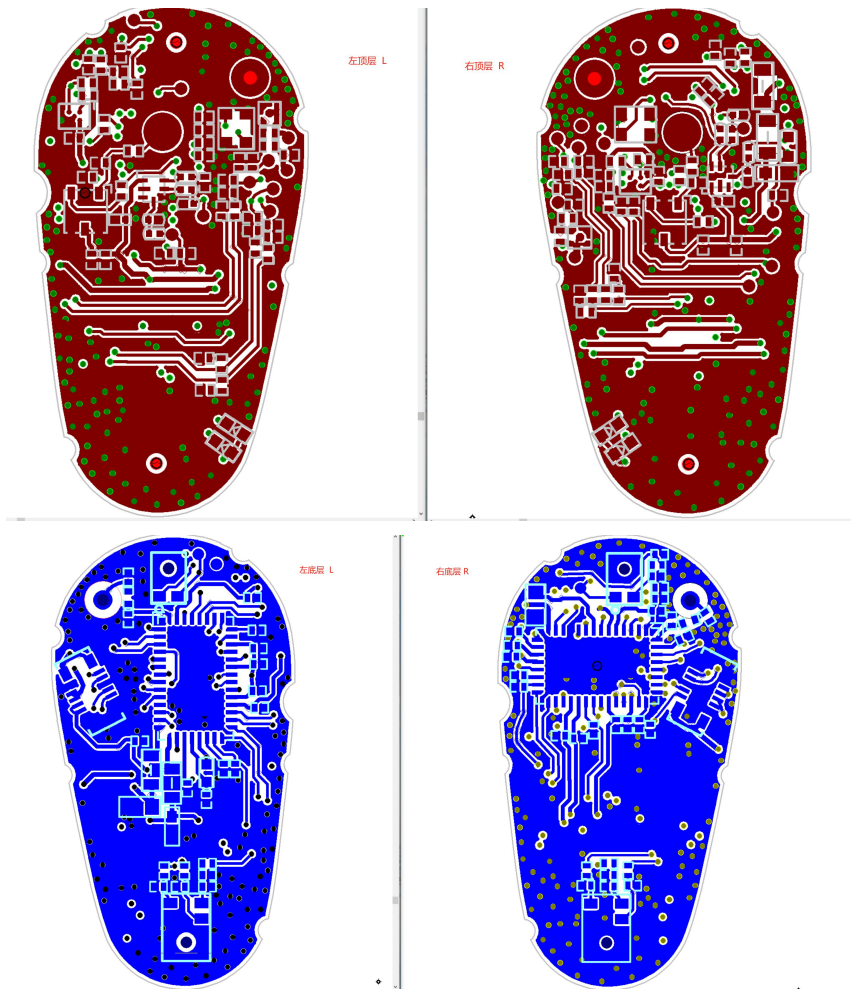
Production name	Trademark	FCC	Model no.
Bluetooth earbuds	Altec Lansing	2A8MIMZX6200	MZX6200, MZX6200-XXX(X=A-Z), MZX6200-BLK, MZX6200-WHT, MZX6200-TRD, MZX6200-PERI

Confirmed by:

Xiangxu Zhu



The PCB layout of the left and right headphones is different in detail as follows:



Hydrabuds (AH150) is wireless Bluetooth TWS earphones, a pair of earphones are divided into left and right earphones, the appearance is different, but the internal PCBA circuits are the same. It's because the earphone structure is not mirrored, resulting in PCBA appearance differences.

For both L earphone and R earphone , the schematic diagrams are the same, all electronics components are the same, and the hardware functions are the same. Just exist the components placement difference, and no other difference any more.