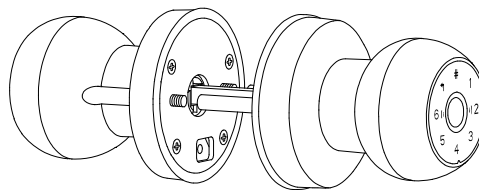


INSTRUCTION MANUAL

Smart lock Q2

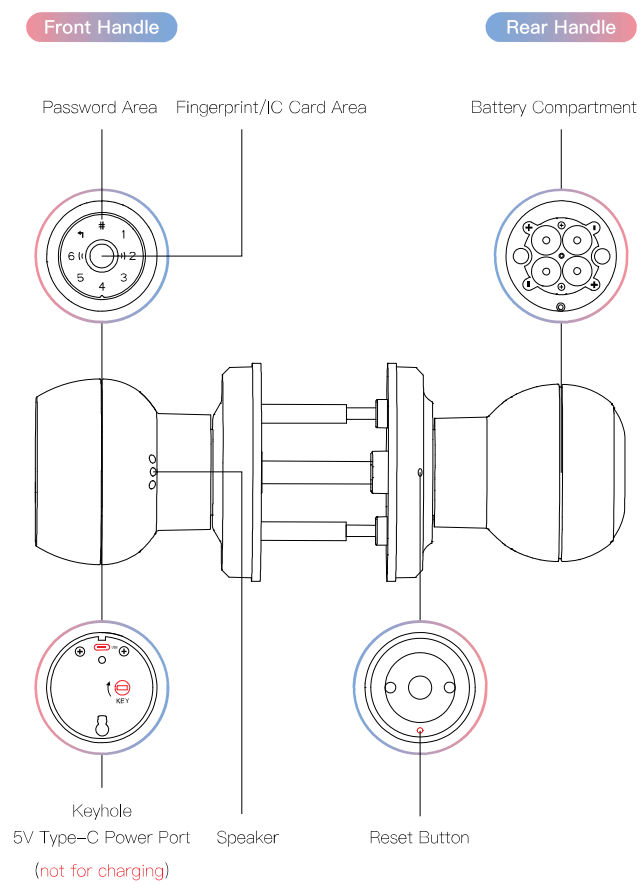


Please read this manual carefully before installing the smart lock and keep it for future reference.

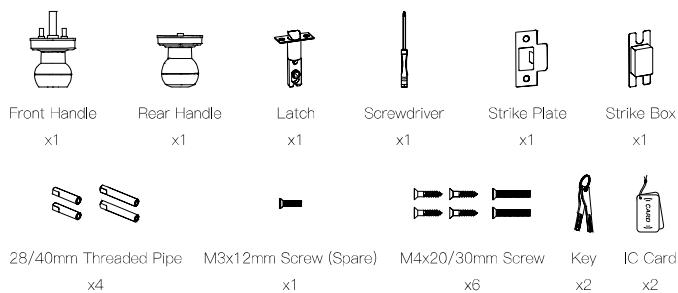
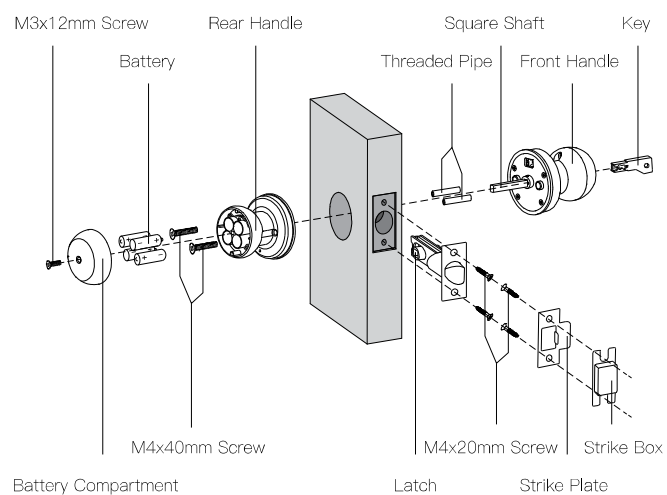
CONTENTS

PRODUCT OVERVIEW	01
DOOR LOCK SCHEMATIC	02
INSTALLATION TUTORIAL	03
1、Door Opening Method.....	03
2、Hole Opening Diagram.....	04
3、Installation Of Strike Box And Strike Plate.....	04
4、Adjust The Latch.....	05
5、Install The Latch.....	06
6、Install The Door Lock.....	06
USE OF DOOR LOCKS	10
1、Add Administrator.....	10
2、Add Regular User.....	10
3、Volume Settings.....	10
4、Network Settings.....	11
5、Normally Open Mode.....	11
6、Delete User.....	11
7、Locking.....	12
8、Key.....	12
9、Anti Peep Password.....	12
10、Restore Factory Settings.....	13
11、Language Switch.....	14
12、Quick Command.....	14
13、Optional Features—Tuya App.....	15
Registration And Login.....	15
Add WiFi Door Lock.....	16
14、Emergency Power Supply.....	18
PRODUCT SPECIFICATIONS	19

PRODUCT OVERVIEW



DOOR LOCK SCHEMATIC



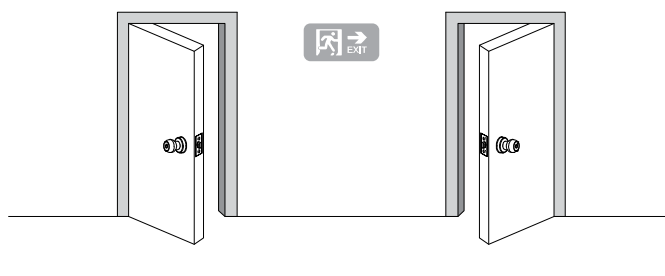
⚠ When unboxing, please check if the above accessories are included.

INSTALLATION TUTORIAL

1、Door Opening Method

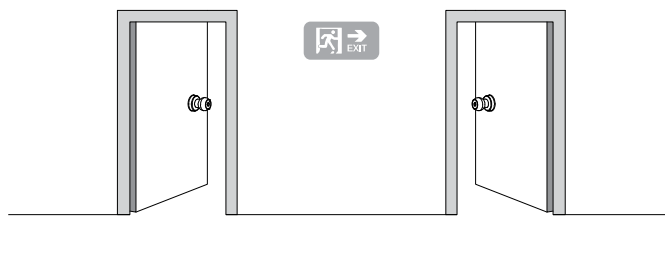
Left Outward Opening Door

Right Outward Opening Door



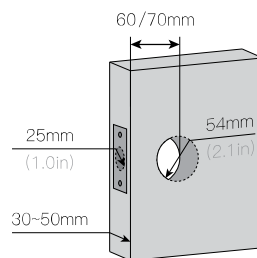
Left Inward Opening Door

Right Inward Opening Door



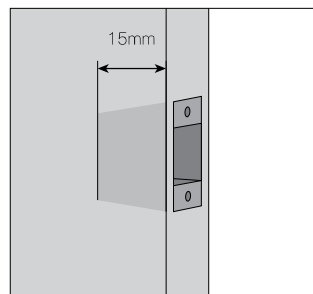
2、Hole Opening Diagram

Ensure the door thickness is 30~50mm, handle bore is 54mm, latch bore is 25mm, and the latch to bolt tilt-back size is 60/70mm.

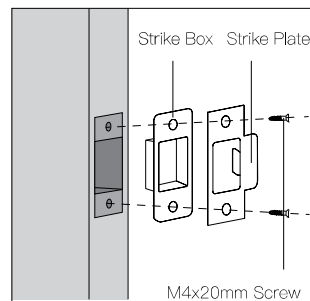


△ Suitable for door thickness 30-50mm, contact us if beyond this range.

3、Installation Of Strike Box And Strike Plate

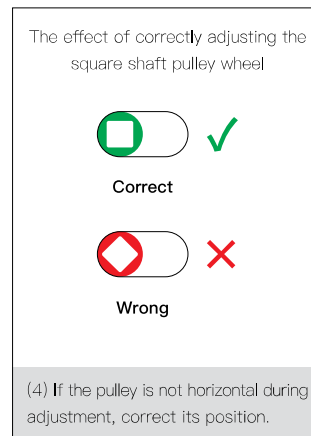
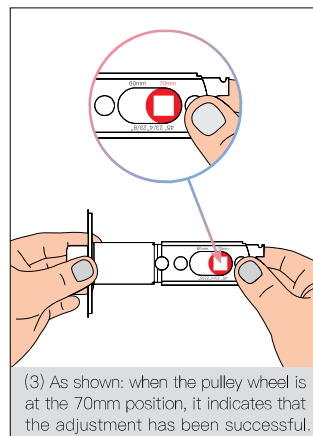
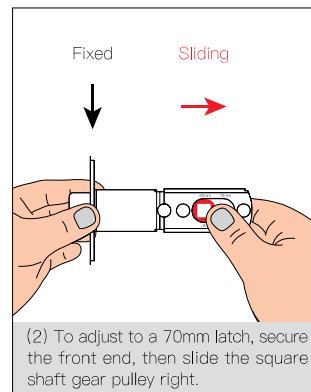
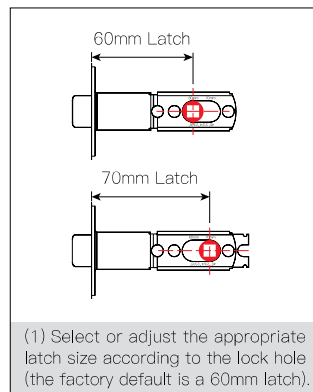


(1) Minimum 15mm door frame bore depth required for latch clearance.

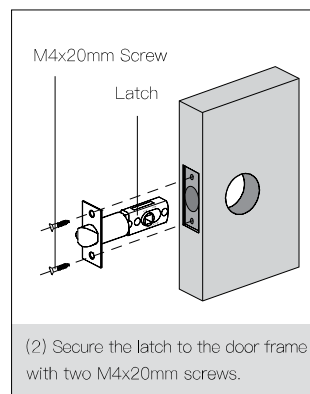
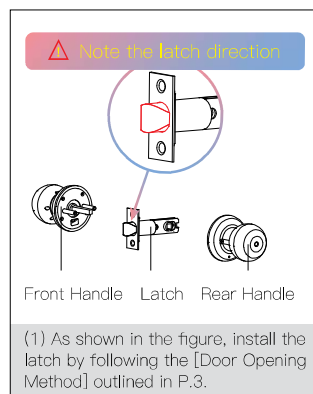


(2) Secure the strike box and strike plate to the door frame using two M4x20mm screws.

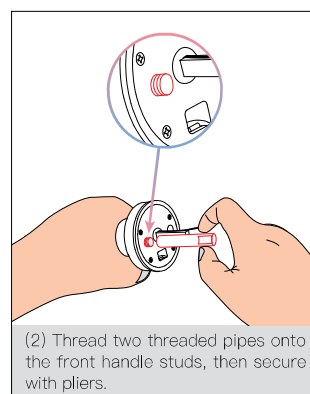
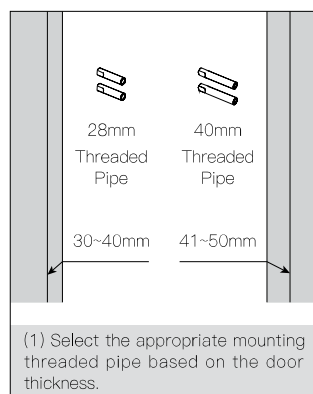
4、Adjust The Latch

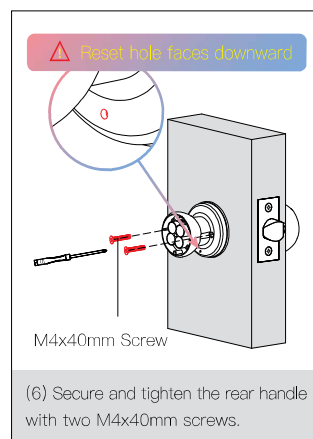
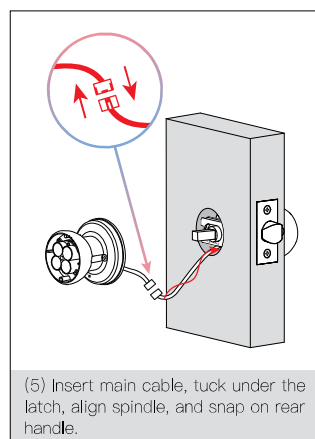
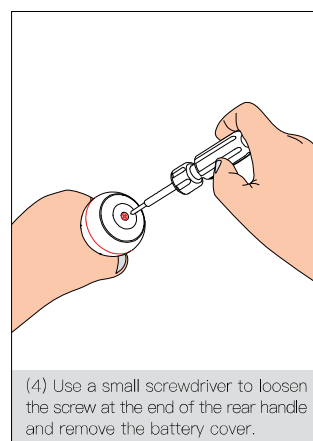
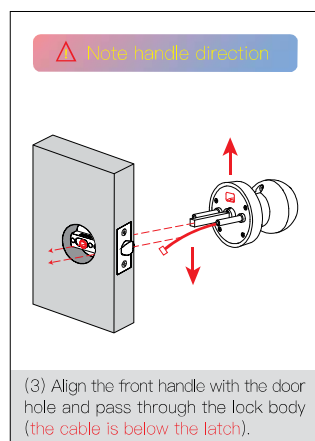


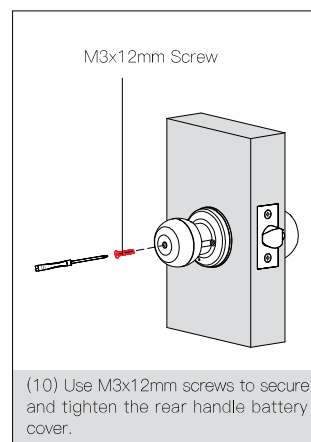
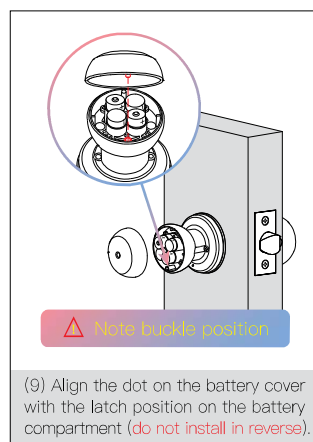
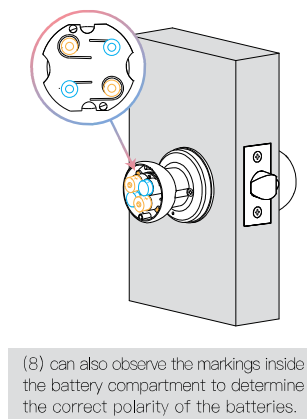
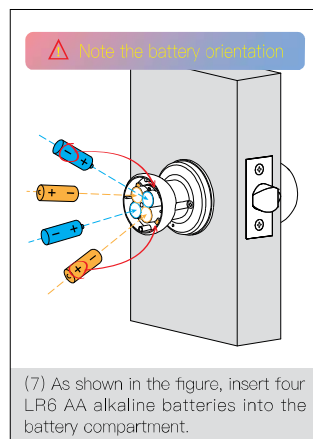
5、Install The Latch

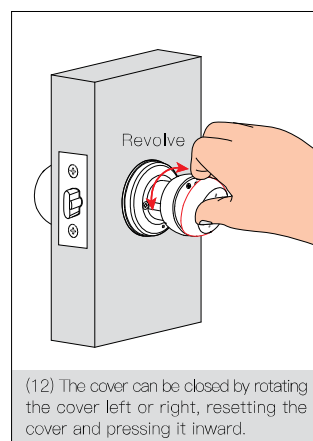
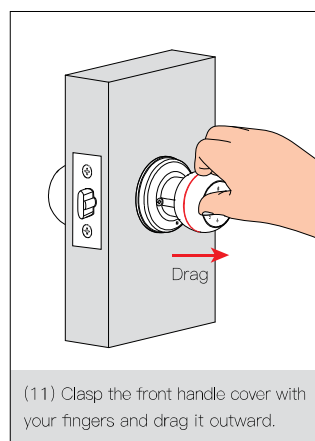


6、Install The Door Lock

















Precautions

-  During lock installation, ensure the power cable is not pinched.
-  The rotating parts of the lock body must operate smoothly.
-  Manual unlocking requires a key, store securely for easy access.
-  Use four new same-brand AA alkaline batteries, no mixing of types.
-  Immediately replace all batteries when the low voltage alert activates, do not combine depleted and fresh batteries.
-  Do not expose the lock to sunlight or rain, it has no IP weatherproof rating.
-  Keep fingers clean and dry when using the door lock.
-  WIFI optional product, when connecting via mobile app, please be sure to select the 2.4 GHz network.

USE OF DOOR LOCKS

1、Add Administrator



(1) Enter a fingerprint, password or IC card as needed;

(2) Enroll the fingerprint 5 times, password 2 times (6-8 digits), card 1 time.

2、Add Regular User



△ After successful enrollment, you can continue adding other admin info (press [↶] to return).

3、Volume Settings



4、Network Settings



⚠ Administrator verification is required after registration to enable networking.

5、Normally Open Mode



(1) When verifying the administrator, the screen will flash blue, press **[#]** to confirm and quickly enable normally open mode.

(2) After the user unlocks, normally open mode is turned off by default. To enable it again, wake the lock and enter **[5+#]**, then verify the administrator.

⚠ Switch between **[Normally Open]** mode and **[Automatic Locking]** mode; additionally, any authenticated user may unlock the door to switch to **[Automatic Locking]** mode.

6、Delete User

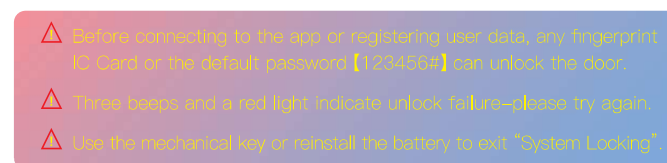


Enter the key to be deleted (the only remaining administrator cannot be deleted). To delete all users, perform a restore factory settings (see P.13).

7、Locking

(1) The device will automatically lock 5 seconds after unlocking.

(2) If no unlocking information is registered, 5 consecutive incorrect attempts within 5 minutes will trigger "System Lock", lasting 90 seconds.



8、Key

Open the handle cover (see P.9), insert the key into the keyhole, turn it 90 degrees clockwise, then turn the handle to unlock.

9、Anti Peep Password

Add random digits before/after your unlock code (26 digits) to prevent exposure.

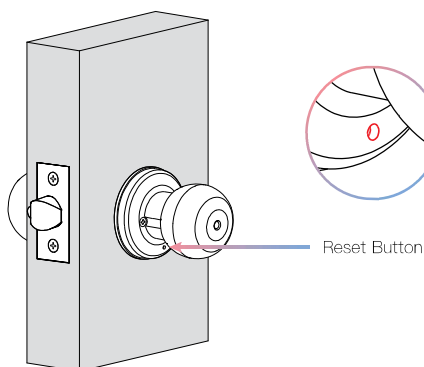


10、Restore Factory Settings

Method 1:

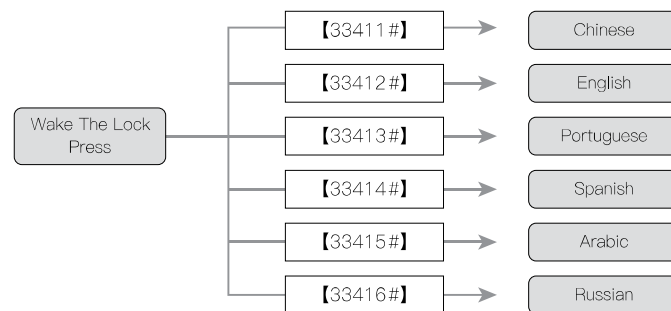


Method 2: Rear Handle Reset Button



△ A door lock factory reset will erase all user data (Fingerprint, Password or IC Card) and restore local programming to default settings.

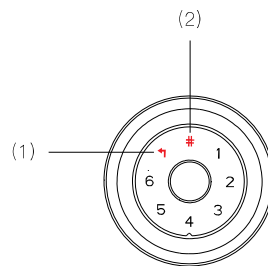
11、Language Switch



△ verify the administrator after input. It is only used in the initialization situation and remembers the last setting after initialization.

12、Quick Command

- (1) 【↵】Key: Return/Cancel;
- (2) 【#】Key: Enter/Confirm。

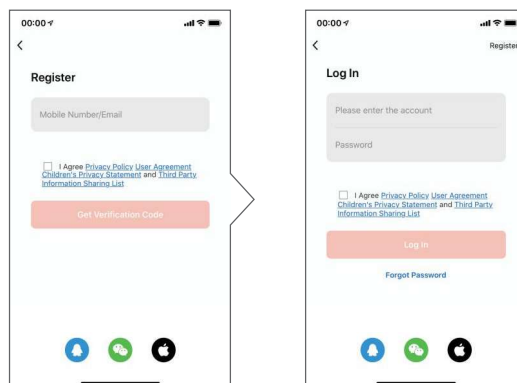


13、Optional Features—Tuya App (Support For Optional Products Only)

Please scan the QR code below to download Tuya Official App, or search “Tuya Smart” in the mobile application market to download App.



Registration And Login



(1) No Account: click **【Create New Account】** to go to the registration page, follow the instructions to get an SMS verification code and set a login password.

(2) Existing Account: click **【Use Existing Account】** to log in, supports password, verification code, or social media login.

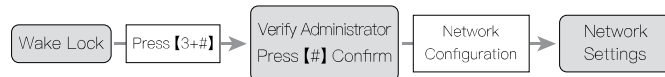
Add WiFi Door Lock



(1) Tap **+** → **Add Device** icon on the home page of the App.

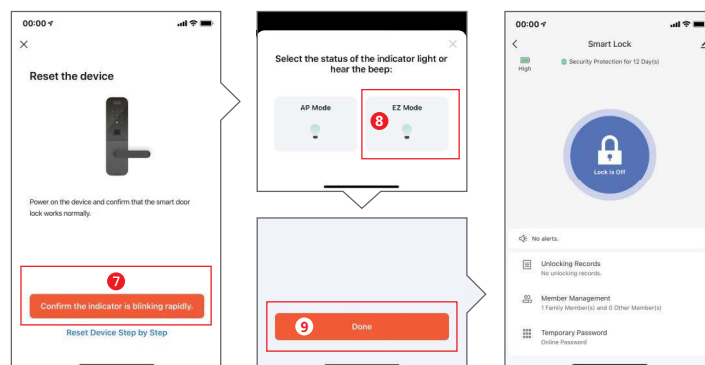
(2) Enter the add device screen, select **Camera/Lock** → **Lock (Wi-Fi)**.

(3) Enter WiFi login page, select WiFi account and password.



(4) Touch the screen or press your fingerprint to wake up the keyboard, enter **[3+#]** and then the administrator account, press **[#]** to confirm.

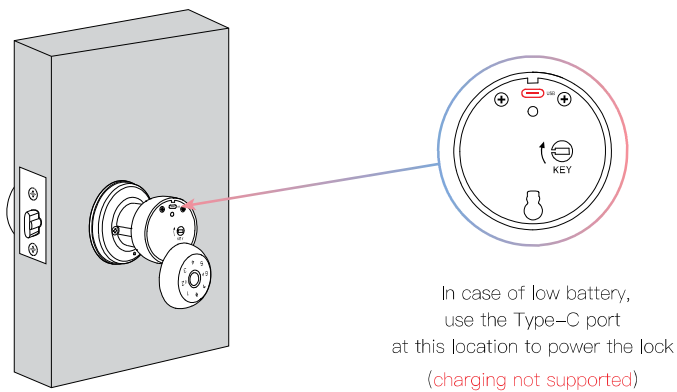
(5) Prompt "Network configuration is in progress, please open App pairing"...



- ⚠ Be sure to select a 2.4G network when connecting to the mobile app.
- ⚠ To request remote unlocking, press the **[4]** key after binding the App.

14. Emergency Power Supply

Low battery warning: ~100 unlocks remaining, please charge or replace battery.



- ⚠ For first-time use, bind the mobile app to the lock (the first user can be a Fingerprint, Password or IC Card).
- ⚠ When the battery is dead, unlock with a mechanical key or power the lock via a 5V Type-C port to use Fingerprint, Password or IC Card.

PRODUCT SPECIFICATIONS

No	Function	Content	Remarks
1	Unlocking Methods	Fingerprint + Password IC Card + Key Tuya App (optional)	
2	User Capacity	300 Groups	Includes administrators and standard users
3	Fingerprint	100 Groups	Requires 5 repeated enrollments (please try from multiple angles)
4	Password	100 Groups	Enter password twice, press 【#】 to confirm (6-8 digits, both entries must match)
5	IC Card	100 Groups	
6	Anti-Snooping Dynamic Code	26 Digits	
7	Low Voltage Alert	$4.8 \pm 0.2V$	When voltage falls below 4.8V, the lock triggers 5 rapid red flashes and a "Low Battery" warning, which permitting ~100 unlocks before automatically deactivating below 4.5V
8	Standby Current	$\leq 60\mu A$	
9	Operating Current	$\leq 250mA$	
10	Power Supply Voltage	$6.0 \pm 0.3V$	
11	Emergency Power	5V (DC)	USB Type-C port
12	Operating Temperature	$-25^{\circ}C \sim +55^{\circ}C$	
13	Operating Humidity	20% ~ 90%RH	
14	Voice Guidance	6-Country Audio Broadcasting	Chinese, English, Portuguese, Spanish Arabic, Russian
15	Error Alarm	Supported	System will lock for 90 seconds after 5 failed attempts within 5 minutes

This device complies with part 15 of the FCC Rules. Operation is subject to the following two conditions: (1) This device may not cause harmful interference, and (2) this device must accept any interference received, including interference that may cause undesired operation.

Any Changes or modifications not expressly approved by the party responsible for compliance could void the user's authority to operate the equipment.

Note: This equipment has been tested and found to comply with the limits for a Class B digital device, pursuant to part 15 of the FCC Rules. These limits are designed to provide reasonable protection against harmful interference in a residential installation. This equipment generates uses and can radiate radio frequency energy and, if not installed and used in accordance with the instructions, may cause harmful interference to radio communications. However, there is no guarantee that interference will not occur in a particular installation. If this equipment does cause harmful interference to radio or television reception, which can be determined by turning the equipment off and on, the user is encouraged to try to correct the interference by one or more of the following measures:

- Reorient or relocate the receiving antenna.
- Increase the separation between the equipment and receiver.
- Connect the equipment into an outlet on a circuit different from that to which the receiver is connected.
- Consult the dealer or an experienced radio/TV technician for help.

FCC Radiation Exposure statement

The device has been evaluatee to meel general RF exposure requirement. The device can be used in portable exposure condition without restriction.

