

Smart Password Padlock



operating instruction
(2023)

Dear users,

Hello ! Thank you for choosing a smart fingerprint padlock . In order for you to have a better use experience , please read the instructions carefully before experiencing the product . When you get the product , pull off the plastic film on the back of the product and power the product to work .

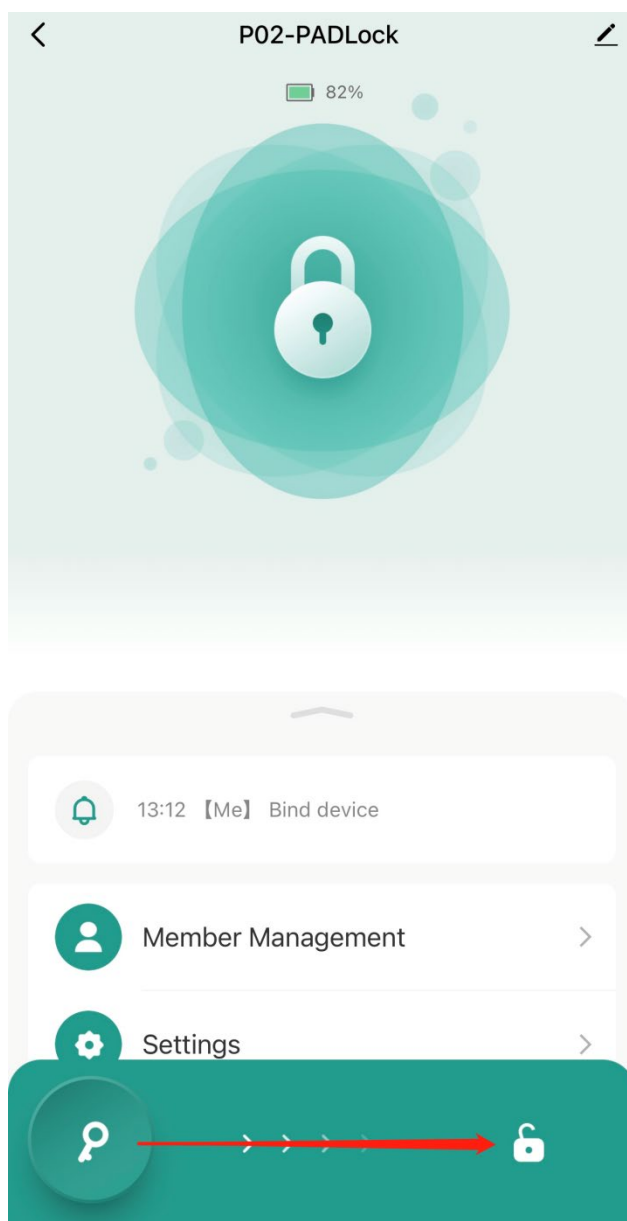
The factory default password of this product is ①②③④⑤⑥, Enter the password will automatically unlock the lock .

Blue light comes on after pressing the number . If the password is incorrect , the red light will light up for one second ; If the password is correct, the green light will light up for one second and unlock .

Intelligent use

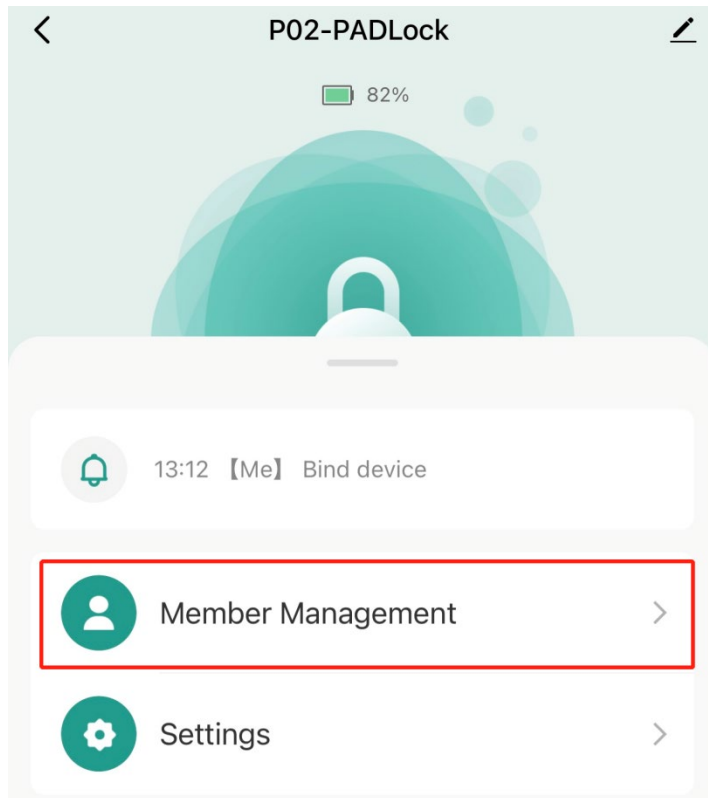
1. Bluetooth unlock

Slide the lock sign from left to right to unlock the lock.

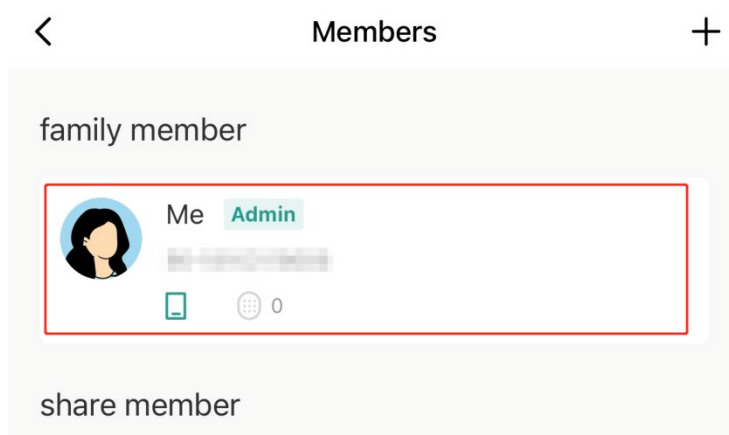


2.Add users

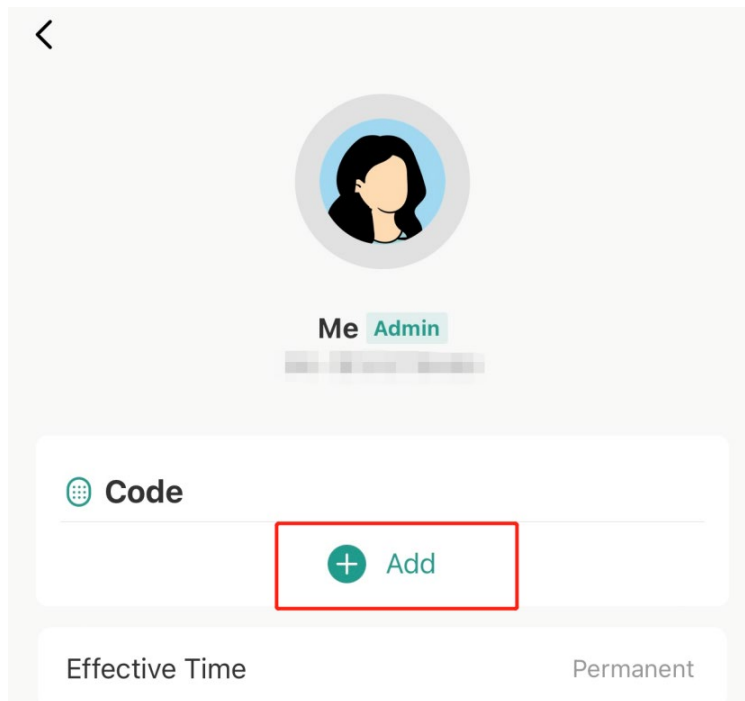
① Click on the "Member Management".



② Click "Me" to enter the add interface.



③Click "Add" to add more users.



④Add a password, set a 6-digit password and click "Save", then the user is added successfully.

Cancel

Save

Add Code

Save the code immediately. It is not displayed in the app.

Please enter a 6-digit password

1 1 2 2 3 3 Random

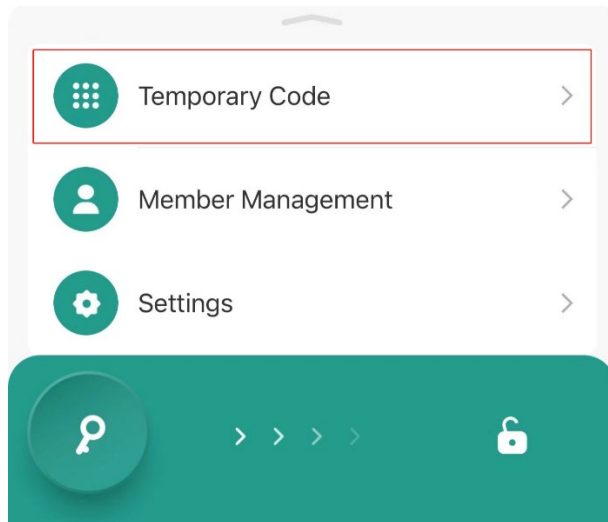
Copy

Code Name

Optional

3. Temporary code sharing

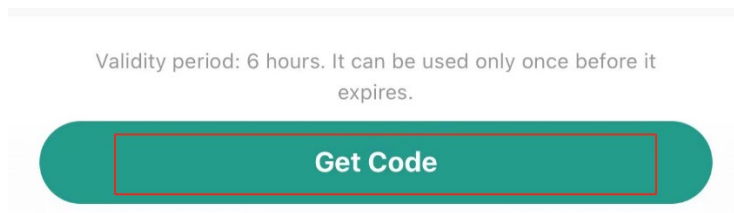
① Click on the 'Temporary code'.



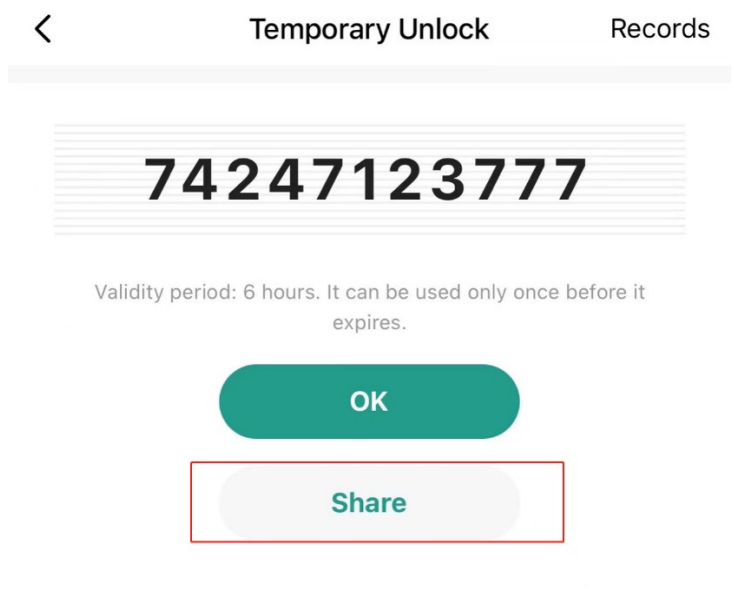
② Select the password type 'Time-Limited' or 'One-Time'.

Two screenshots of a mobile application's 'Temporary Unlock' settings screen. The top screenshot shows the 'Code Type' section with three options: 'Time-Limited' (highlighted with a red border), 'One-Time', and 'Clearing'. Below this are fields for 'Effective Time' (10-07-2023 10:00), 'Expiration Time' (Select), and 'Code Name' (Optional). The bottom screenshot shows the same screen but with 'One-Time' selected and highlighted with a red border. The 'Effective Time' field is now empty, and the 'Expiration Time' field remains 'Select'. Both screenshots have a back arrow, 'Temporary Unlock' title, and 'Records' link at the top.

③Click on 'Get Code'.



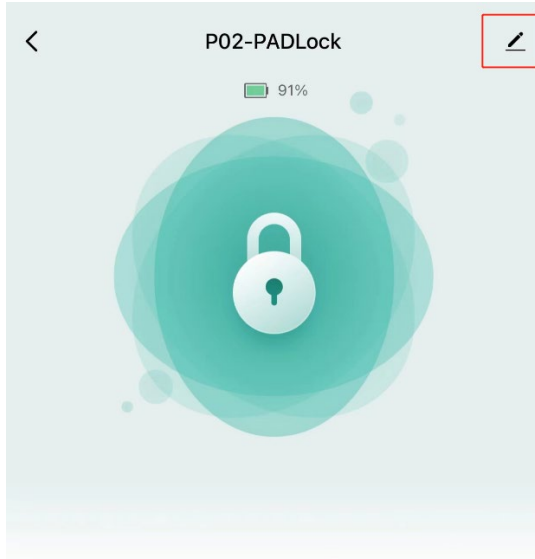
④Click on 'Share'.



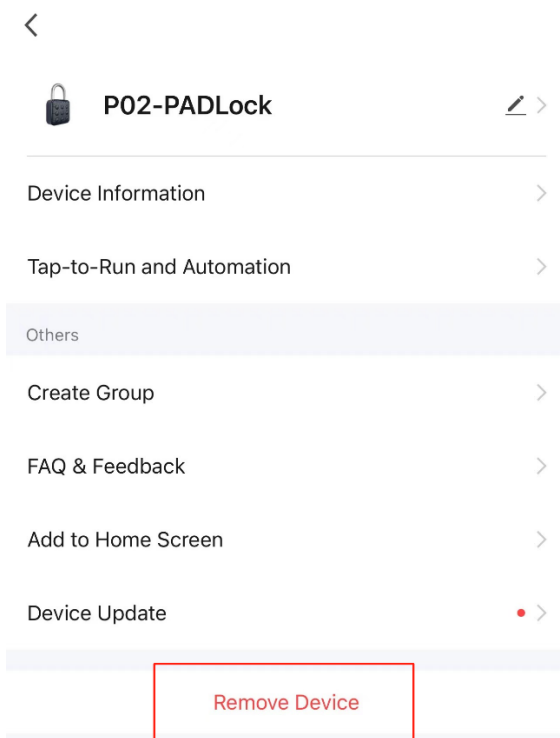
⑤Please enter '111111' on the lock first, and then continue to enter the shared code immediately.

4.Disconnect

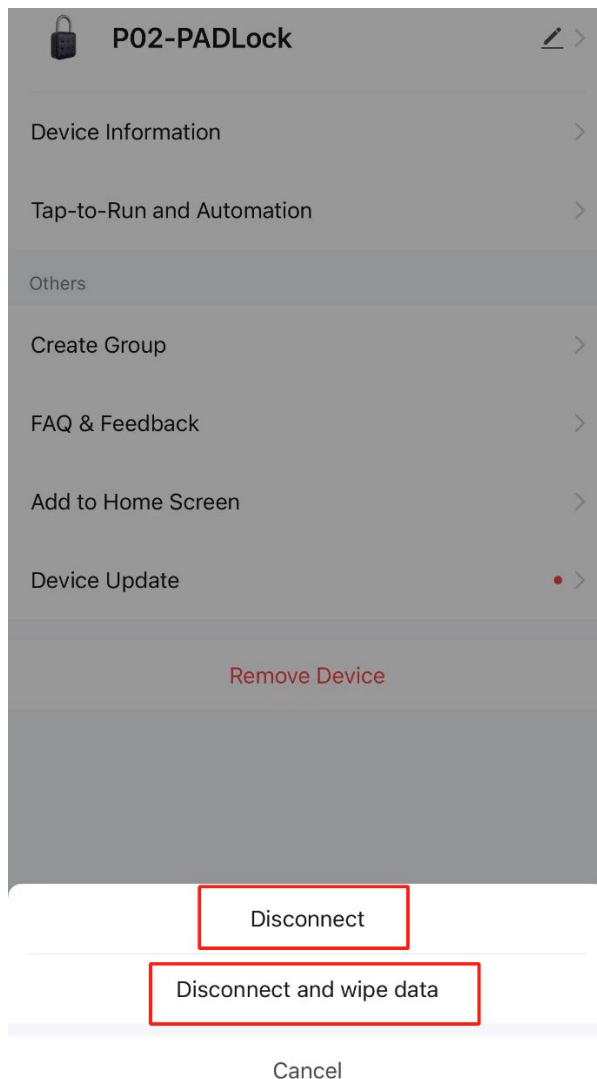
① Click on the upper right corner to edit.



② Click on 'Remove Device'.



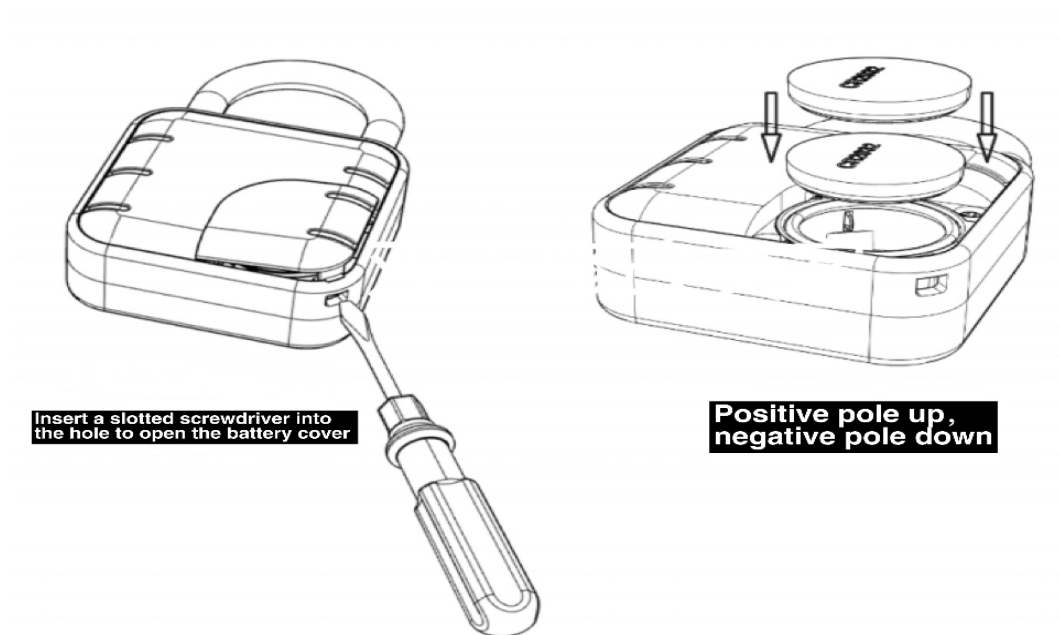
③ Click on 'Disconnect' or 'Disconnect and wipe data'.



(When the device is connected to Bluetooth, if the user deletes them all, the device will resume the factory setting!)

Abnormal treatment method

When there is any abnormality in the product , please try to open the lock several times . If not , please replace the new button battery before trying to open the lock .



This device complies with part 15 of the FCC Rules. Operation is subject to the following two conditions: (1) This device may not cause harmful interference, and (2) this device must accept any interference received, including interference that may cause undesired operation.

Any Changes or modifications not expressly approved by the party responsible for compliance could void the user's authority to operate the equipment.

Note: This equipment has been tested and found to comply with the limits for a Class B digital device, pursuant to part 15 of the FCC Rules. These limits are designed to provide reasonable protection against harmful interference in a residential installation. This equipment generates uses and can radiate radio frequency energy and, if not installed and used in accordance with the instructions, may cause harmful interference to radio communications. However, there is no guarantee that interference will not occur in a particular installation. If this equipment does cause harmful interference to radio or television reception, which can be determined by turning the equipment off and on, the user is encouraged to try to correct the interference by one or more of the following measures:

- Reorient or relocate the receiving antenna.
- Increase the separation between the equipment and receiver.
- Connect the equipment into an outlet on a circuit different from that to which the receiver is connected.
- Consult the dealer or an experienced radio/TV technician for help.

RF warning for Portable device: The device has been evaluated to meet general RF exposure requirement. The device can be used in portable exposure condition without restriction.