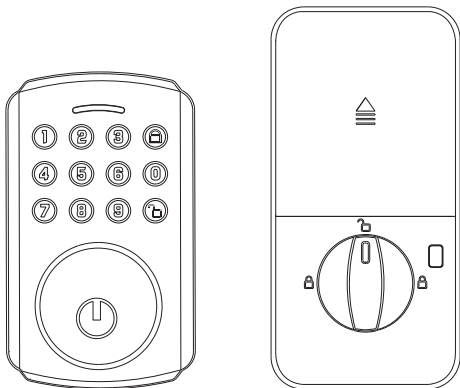


# INSTRUCTION MANUAL



Before installing the smart lock,  
please read this manual carefully,  
and keep it in a safe place, for future reference.

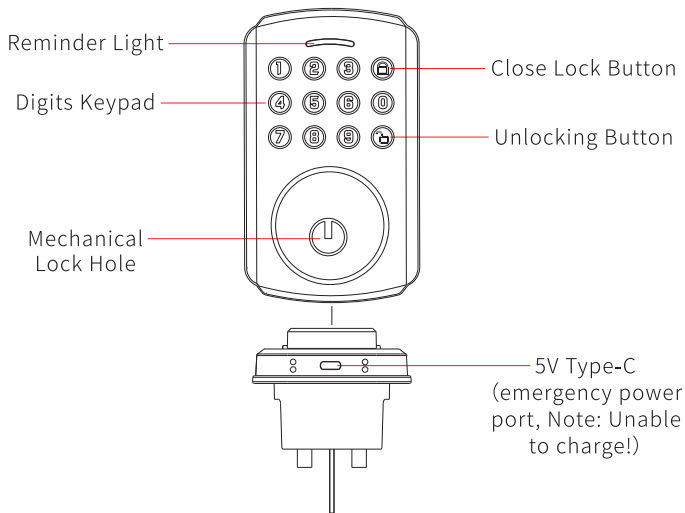
# TABLE OF CONTENTS

<b>PRODUCT OVERVIEW</b>	01
<b>DOOR LOCK SCHEMATIC</b>	02
<b>DOOR LOCK INSTALLATION TUTORIAL</b>	03
1、Measure The Door Size	03
2、Mounting Latch Strike Plate And Strike Plate Box	03
3、Adjustment Latch	04
4、Installation Of Latch	05
5、Installation Of Door Locks	06
<b>USE OF DOOR LOCKS</b>	09
1、Outdoor Unlocking And Locking	09
2、Interior Unlocking And Locking	10
3、How To Delete A User	11
4、Emergency Power Supply	12
<b>APP OPERATION INSTRUCTIONS</b>	13
1、App Registration And Login	13
2、Add Bluetooth Door Lock	14
3、Bluetooth Door Lock Home	15
4、Temporary Password Management-Create And Delete	16
5、Password Management	18
6、Member Management-Administrator Add	19
7、Member Management-Ordinary Members Added	20
8、Deletion Of family Members	20
9、Open Door Record And Equipment Alarm	21
10、Restore Factory Settings	22
<b>LOCAL OPERATING INSTRUCTIONS</b>	23
1、Local Auxiliary Functions	23
2、Via App	24
3、Local Password	24
4、keys	24
5、Local Volume Settings	24
<b>PRODUCT TECHNICAL PARAMETERS</b>	25

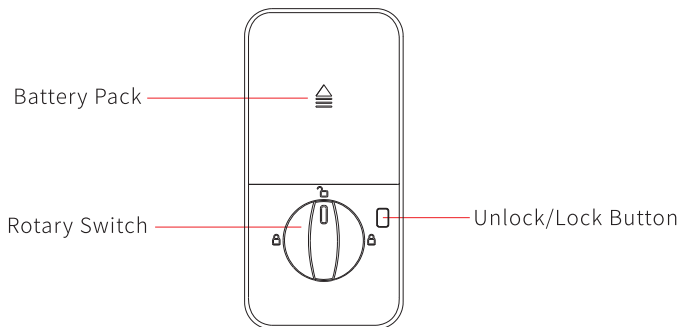
# PRODUCT OVERVIEW

---

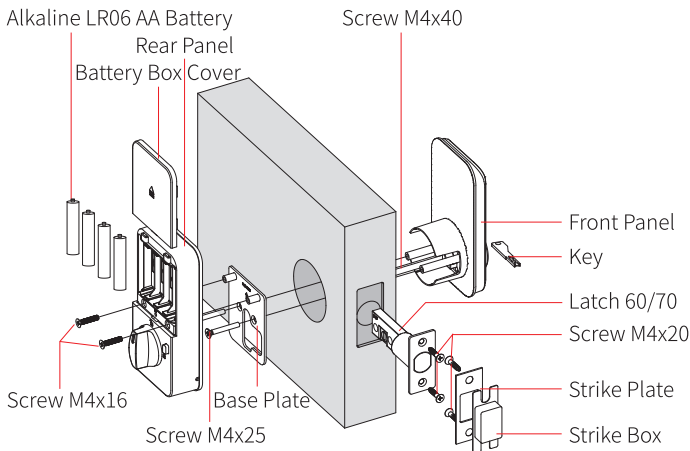
## Front Panel



## Rear Panel



# DOOR LOCK SCHEMATIC



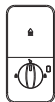
**Tips** ⚠️ (1) Pass the front panel through the 60/70 locking lee, The main line passes underneath the lockjaw.

(2) Remove the rear panel screws to take out the base plate, the front panel and the base plate are fixed with M4x30 screws.

## Attachment



Front Panel  
x1



Rear Panel  
x1



Latch 60/70  
x1



Latch Strike Plate  
x1



Strike Plate Box  
x1



Key  
x2



Screw tube  
M4x40 (mm)  
(Spare) x2



Open Hole Jam  
x1



Screw  
M4x25 (mm)  
x2



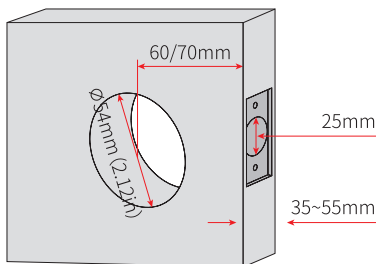
M screw  
M4x20 (mm)  
x4

**Tips** ⚠️ Open the product package and check that the above accessories are included.

# DOOR LOCK INSTALLATION TUTORIAL

## 1. Measure The Door Size

Make sure door thickness is 30mm-50mm, door hole diameter is  $\Phi 54\text{mm}$ , measure backset size is 60/70mm with the deadbolt.



**Tips** ⚠ (1) Applicable door thickness 35~55mm, if the door thickness exceeds this range, please contact us for more information. Please choose the right fittings according to your door thickness. (2) For 35-45 door thick, please use a 30mm nut, 45-55 door thick, please use 40mm nut.

## 2. Mounting Latch Strike Plate And Strike Plate Box

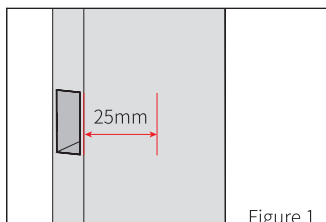


Figure 1

### (1) As Figure 1:

The locking hole should be at least 25mm deep, allowing the locking mechanism to extend into the space.

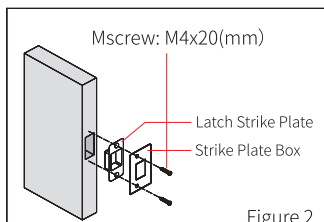
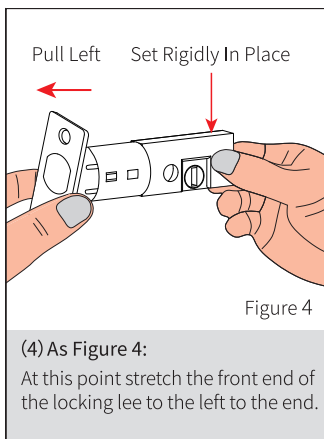
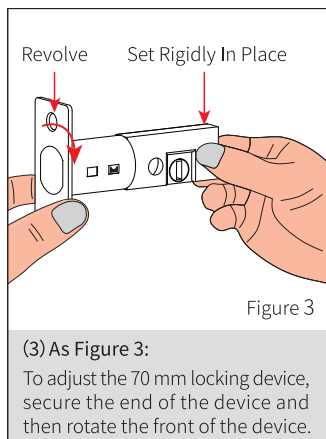
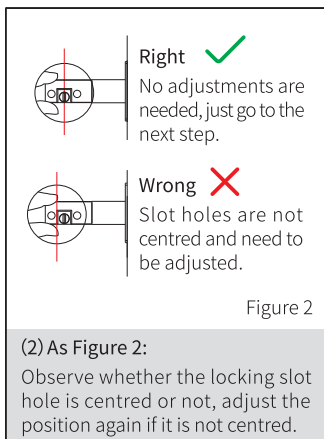
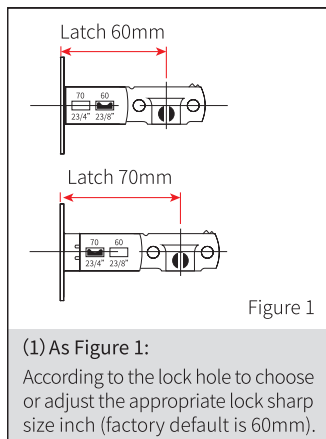


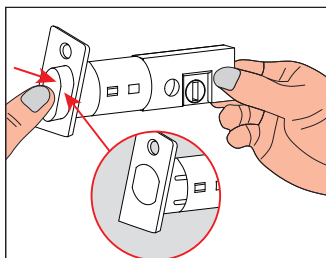
Figure 2

### (2) As Figure 2:

Use 2 self-tapping screws to secure the snap box and snap plate to the door frame.

### 3. Adjustment Latch



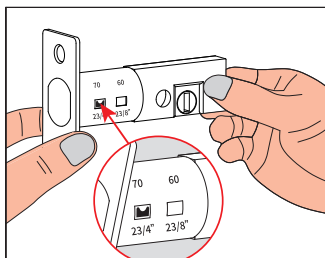


Correct State ✓

Figure 5

(5) As Figure 5:

When the lock is found to be dented during operation, press the lock fully in first.



Adjustments completed!

Figure 6

(6) As Figure 6:

After the front of the locking lever is reset, the snap point is shown at the 70mm position.

## 4. Installation Of Latch

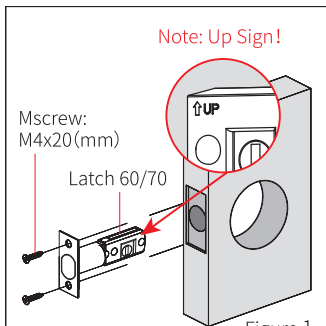


Figure 1

(1) As Figure 1:

Secure the locking lee to the door frame with two M4x20 screws.

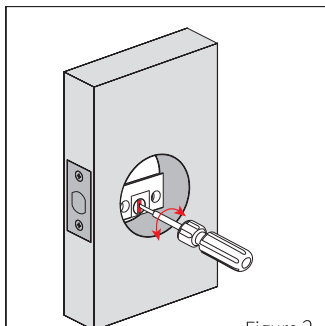


Figure 2

(2) As Figure 2:

Use a one screwdriver to check that the locking lee is smooth.

## 5. Installation Of Door Locks

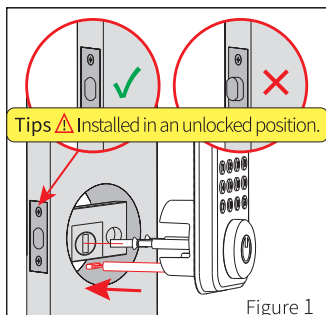


Figure 1

### (1) As Figure 1:

Pass the front panel through the door hole (note: the mains cable passes under the locking lee).

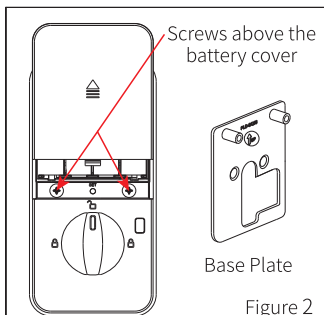


Figure 2

### (2) As Figure 2:

Open the battery cover, remove the screws above the battery cover, and remove the mounting plate.

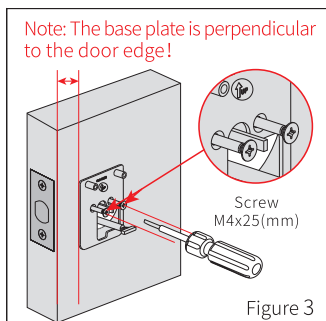


Figure 3

### (3) As Figure 3:

Secure the base plate with screws (do not over tighten to prevent deformation of the locking mechanism).

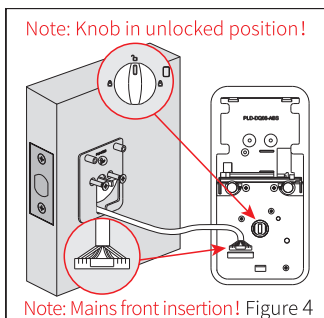


Figure 4

### (4) As Figure 4:

The mains lead is inserted into the socket and pushed in until full contact is made (**Do not install batteries!**).



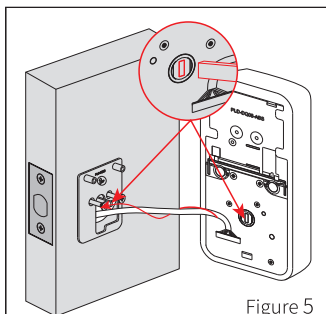


Figure 5

(5) As Figure 5:

Tuck the mains back into the door frame, align the rear panel with the Latch and fix to the door.

Note: Rear panel is perpendicular to the door edge!

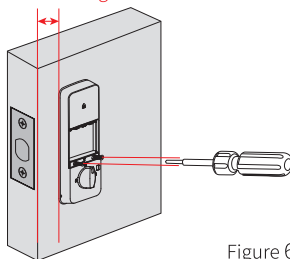
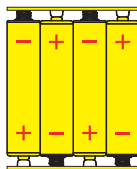
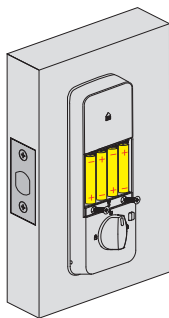


Figure 6

(6) As Figure 6:

Secure the two screws previously removed from the battery cover and tighten them.



Tips ⚠ Note the battery orientation!

Figure 7

(7) As Figure 7:

Installation is complete when the battery is installed and the battery cover is closed.

### Check Points After Installatio⚠

- (1) Please be sure to install the batteries after the door lock is installed.
- (2) The door lock will automatically calibrate the motor to identify the direction of opening the door.
- (3) The rotating parts of the 60/70 locking lee must be able to rotate smoothly and flexibly.
- (4) Please choose high-quality LR06 alkaline batteries and make sure that the 4 batteries are brand new, and cover the battery cover.

### Tips⚠

- (1) This lock requires a mechanical key for manual unlocking, remove the mechanical key from the package and keep it in a safe place so that it can be used at any time.
- (2) When you hear the low voltage alarm, please replace the batteries immediately, do not mix new and old batteries or different types of batteries.
- (3) This lock is waterproof IP65, please pay attention to daily use and maintenance.
- (4) Keep your fingers clean and dry when using this lock.
- (5) When using the Bluetooth app on your mobile phone, please keep it within an effective distance of 5~10 metres.

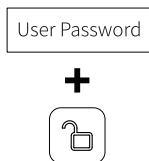
# USE OF DOOR LOCKS

---

## 1、Outdoor Unlocking And Locking

### (1)、Unlocking From Outside

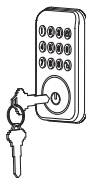
#### Combination Unlocking



#### Mobile App Unlocking



#### Key Unlocking



### (2)、Locked From Outside

#### Auto Lock Off Mode

In Auto Lock mode,  
5 seconds after unlocking,  
The latch is  
automatically extended.

#### Manual Mode



Press the panel  
numeric buttons  
to wake up the device,  
then press **[A]**.

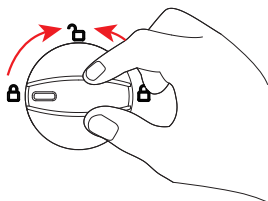
#### Key Mode



## 2、Interior Unlocking And Locking

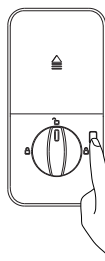
### (1)、Unlocking From The Inside

#### Panel Unlocking



Turn knob to unlock position

#### Electronic Switch Buttons



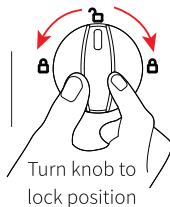
Press this button to open and close the lock.

### (2)、Locked From Inside

#### Auto Lock Off Mode

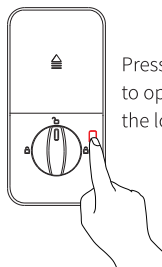
In Auto Lockout Mode, the unit will lock out automatically.

#### Manual Mode



Turn knob to lock position

#### Electronic Switch Buttons

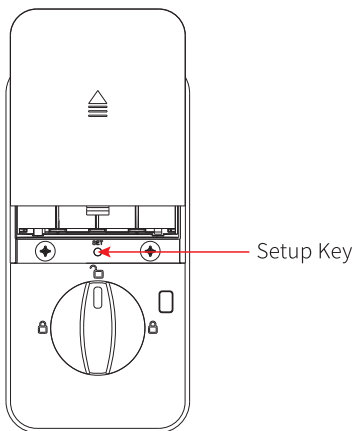
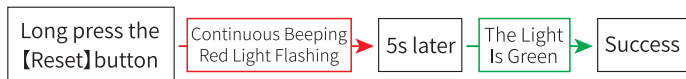


Press this button to open and close the lock.

### 3、How To Delete A User (Restore Factory Settings)

When resetting the lock, all user passwords will be cleared, all programmed functions will be reset to factory settings, and applications will be reset to factory settings.

#### Method 1:



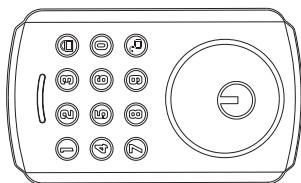
#### Method 2:

Wake up the keypad and enter【888+🔑】to verify the administrator, the green light blinks → Initialisation is successful.

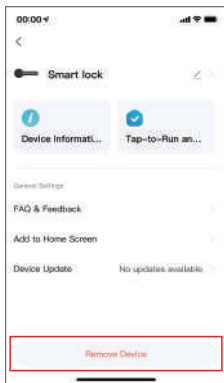
### Method 3:

Via App: ( See P.22)

#### 4. Emergency Power Supply



In case of insufficient power, use the emergency power supply here (charging is not possible).



#### Tips ⚠️

- (1) Put at least one key outside the door, just in case.
- (2) When the battery is low, the red light blinks 5 times and can still be used about 100 times (Apps will not be able to operate the device after a power failure).
- (3) When the battery is dead, you can use the key to unlock the door, and also you can supply power to the lock through the 5V Type-C USB.
- (4) Use alkaline batteries, to prevent the battery from leaking and causing damages, if you don't use it, please remove the battery.

# APP OPERATION INSTRUCTIONS

## Tuya App Operating Instructions

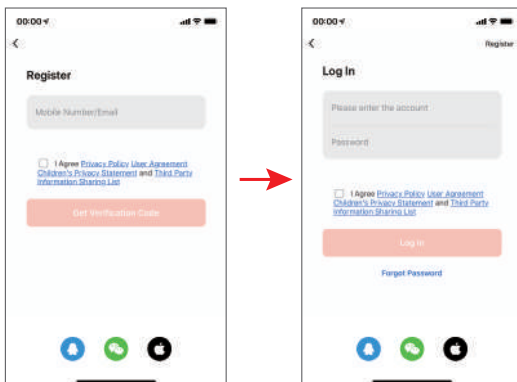
“Tuya Smart App” is a smart device management app provided by Tuya to end consumers. Through “Tuya Smart App”, you can conveniently configure and control your purchased whole-house smart products, configure your favourite scenarios and automation solutions, share your smart devices with your family and friends, and enjoy the fun of whole-house intelligence.

App acquisition: Search for “Tuya Smart” in the mobile phone application market or “Apple Store” or scan the QR code below to download.

※ This document takes the Smart Life App as an example to explain the App door lock panel function in detail.

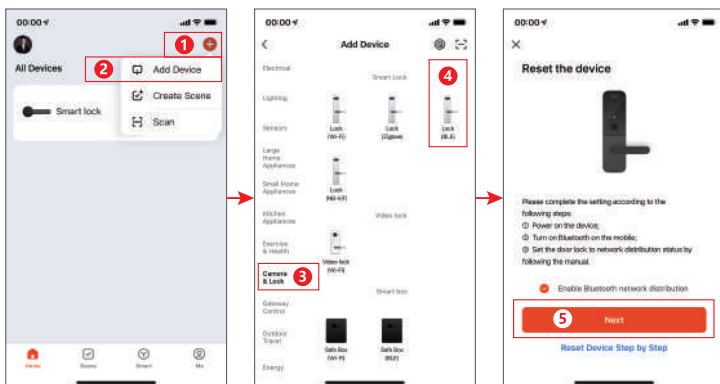


## 1、App Registration And Login



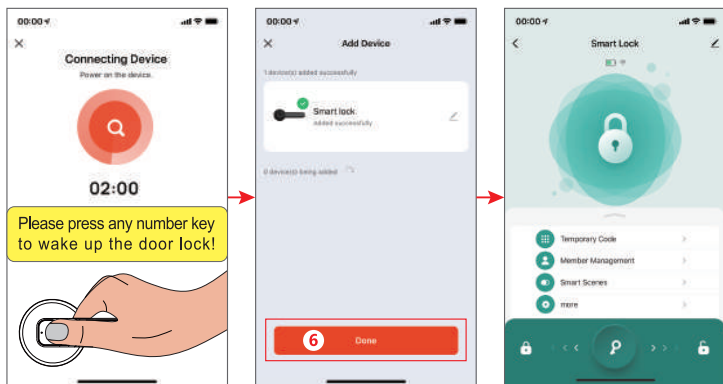
- (1) App registration: Accounts without an app choose to register or login via SMS verification code.
- (2) Click **【Create New Account】**, you will enter the registration page of the account, get the SMS verification code and set the password according to the prompts.
- (3) If you have an existing account, you can click **【Login with existing account】** to log in to the App, and the login method supports password, verification code, social account and other login.

## 2.Add Bluetooth Door Lock (Must First Turn On The Mobile Phone Bluetooth Function)



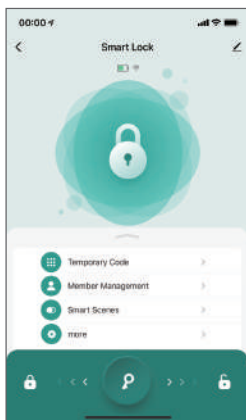
- (1) Click the **【Add Device】** icon on the home page of the app.
- (2) Touch the password head to wake up, wait for the mobile phone to scan the device to select **【Add】**, press the **【+】** mark to add the device to complete.
- (3) Wait for the device to be added, and the smart lock interface appears, indicating that it has been added successfully.





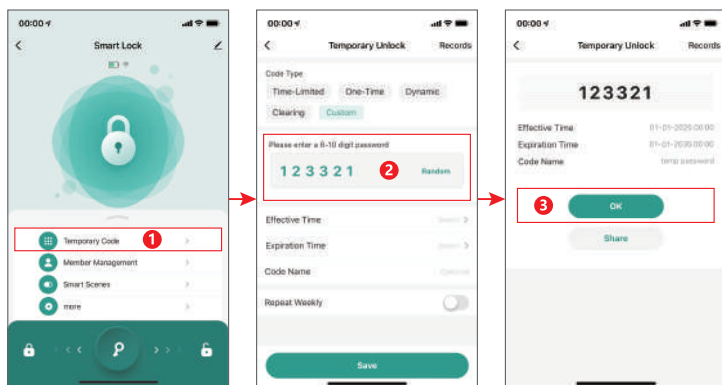
**Tips** ⚠️ If you cannot match the door lock, restore the factory settings (See P.11).

### 3、Bluetooth Door Lock Home

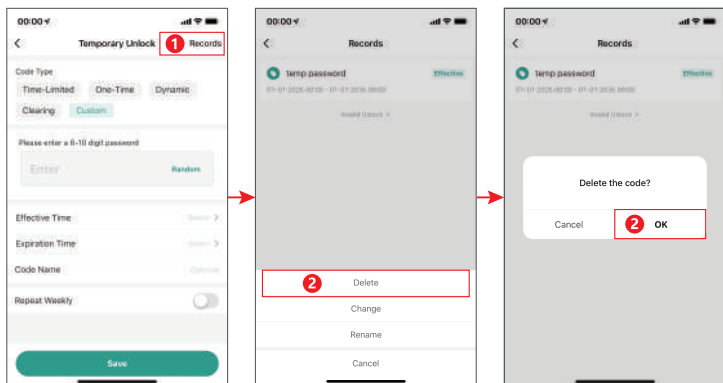


- (1) The top of the homepage shows the device name and current battery status, and the bottom of the homepage contains【Open Record】, 【Temporary Password】, 【Member Management】, 【Smart Apps】and 【More Settings】.
- (2) The homepage centre will show the connection status of Bluetooth, if it is connected, you can slide【Unlock】 to the right to open the door lock directly, and slide【Close】to the left to close the lock (please make sure that the Bluetooth of your mobile phone has been turned on, and it is recommended to do this operation within 5 meters). If Bluetooth is not connected, it will show“Unable to connect Bluetooth”(Bluetooth cannot be turned on directly through the App).

#### 4. Temporary Password Management-Create and Delete

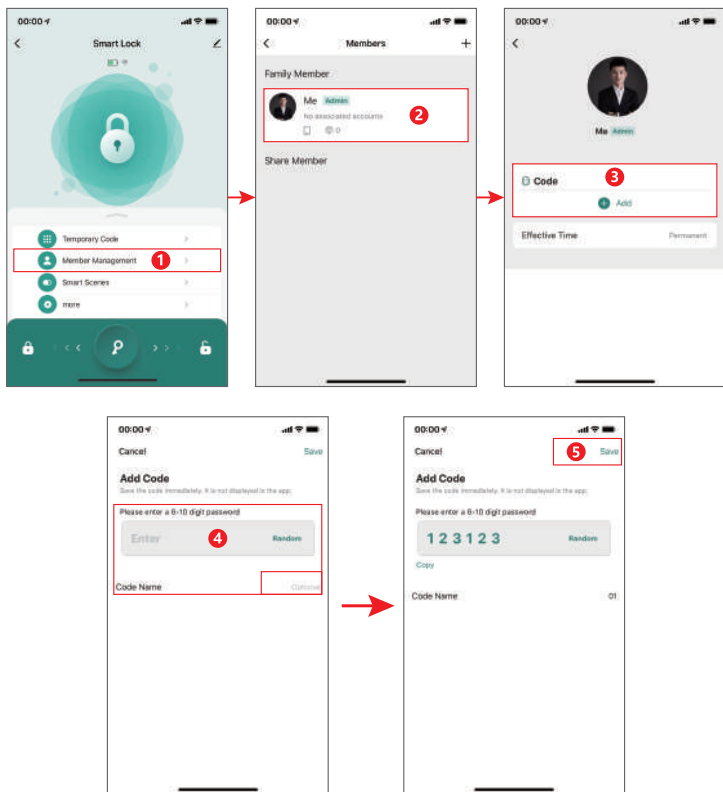


- (1) Click the【Temporary Password】icon on the home page of the app.
- (2) Enter the interface of【Temporary Unlock】, select the password type and enter 6~10 digits of password (you can't enter the same number or consecutive numbers, such as: 000000 or 123456).
- (3) Select the effective time and expiry time and enter the password name.



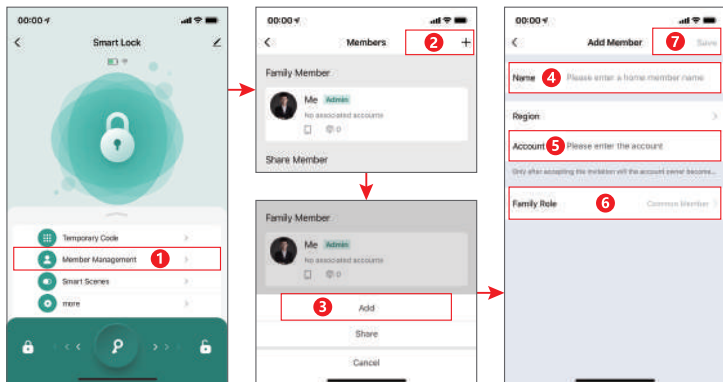
- (1) Click the【Temporary Password】icon on the home page of the app.
- (2) Enter the【Temporary Lock】creation interface, select【Records】in the upper right corner to enter the history of【Temporary Password】records.
- (3) Select the【Delete】option at the bottom, then click【OK】to delete the【Temporary Password】.

## 5. Password Management



- (1) Home page【Member Management】portal, select the【Family Member】account with corresponding privileges (Note: Associated administrators will have administrator privileges, while associated ordinary members only have ordinary user privileges).

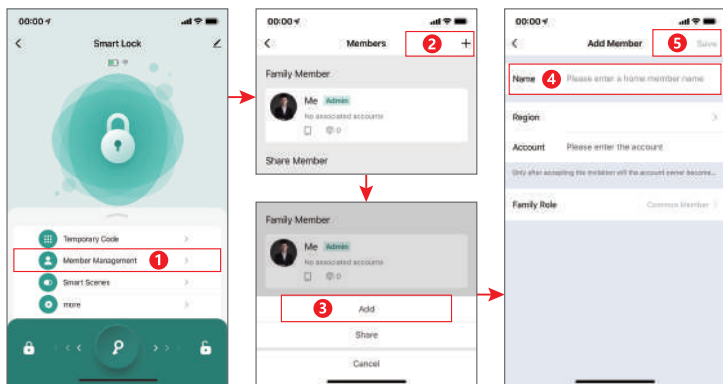
## 6、Member Management-Administrator Add



- (1) Click【+】in the upper right corner of the【Member Management】portal, select 【Add Member】, enter the member name and Graffiti account, select the permissions and click save to add administrator. user. (Note: the added administrator account must be a registered Graffiti Smart account, otherwise it will not be able to add)
- (2) The added account will receive an invitation message after opening the mobile Graffiti App, and will have the management rights of the device after agreeing.

**Tips** ⚠ Users who add accounts will all default to administrator privileges.

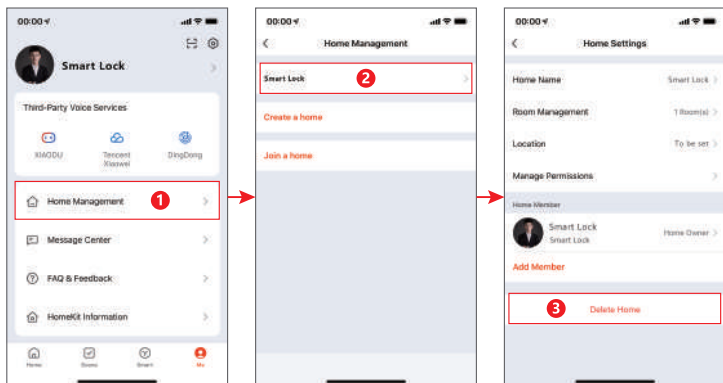
## 7、Member Management-Ordinary Members Added



(1) Click【+】in the upper-right corner, select【Add Member】, enter the member name, no need to enter the account number, and click save to add a general member user.

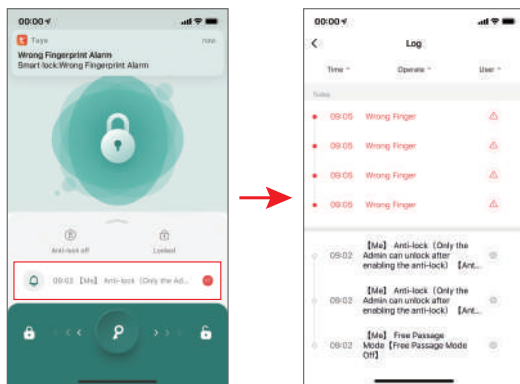
**Tips** ⚠ Users who add accounts will all default to administrator privileges.

## 8、Deletion Of Family Members



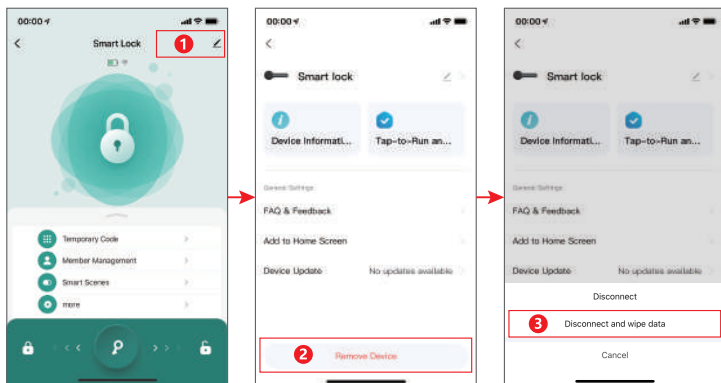
Click my【Family Management】in the lower right corner of the App, select Family to delete or change the usage rights of the added family members.


## 9、Open Door Record And Equipment Alarm



Click on the【🔔】icon to view the door opening record and trial and error alarms and other information. (Note: When the door lock is connected to the Bluetooth of mobile phone, the open door record and alarm will be shown on the App in real time, otherwise the record will be cached locally in the door lock, waiting for the next time the door lock is connected to the Bluetooth of the mobile phone and opens the door to make up the transmission.

## 10、Restore Factory Settings



On the main page, click on the icon in the upper right corner【】, enter the interface and find【Remove Device】, select【Unbind and Clear Data】.

- (1) When the mobile phone App is in Bluetooth connection status with the door lock, use the restore factory settings operation, all the door lock's local door opening methods will be cleared, and the door lock will be restored to the factory default status, and other users can also re-match the door lock through the App.
- (2) When the mobile phone does not have Bluetooth connection with the door lock, restore the factory settings on the mobile phone App, the door lock will still retain the door opening data unaffected. Other users can re-pair with the door lock through the App, after re-pairing, all the original data on the door lock will be invalid.



# LOCAL OPERATING INSTRUCTIONS

---

## 1、Local Auxiliary Functions

### (1)、Cryptographic

The initial password of the lock is【123456】, the first time you use it, please pair your lock in Graffiti App, the first user can be fingerprint or password.

### (2)、Automatic Locking

The lock is automatically switched off 5 seconds after unlocking, by default this function is switched off (You can customise between 5~60 seconds).

### (3)、Functions Of The Key

The key unlock function is always available when the battery runs out or the code is forgotten.

### (4)、Input Error Limit

After 5 failed attempts to enter the code, the device will lock for 1 minute.

### (5)、Silent Mode

Pressing a button will emit a beep, and the voice can be muted.

### (6)、Normally Open Mode

The device will remain unlocked when the normally open mode is enabled until the lock is manually switched off.

### (7)、Unlocking With A Snoop-Proof Code

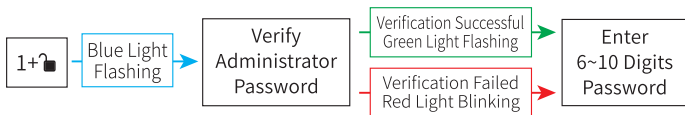
Users can enter a random number before or after the unlock code to prevent the unlock code from being exposed, the total length of the code is 26 digits (as shown in the figure below).



## 2、Via App (See P.13)

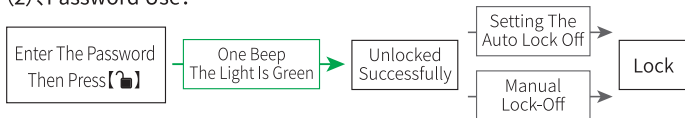
## 3、Local Password

### (1)、Local Password Entry:



**Tip** ⚠ The two passwords must be the same, then press【🔑】to confirm.

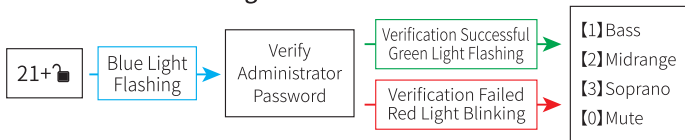
### (2)、Password Use:



## 4、keys

Turn 90° to unlock/close the lock when using the spare key.

## 5、Local Volume Settings



**Tip** ⚠

(1) When the App or User Key is not connected, 【123456+🔑】 can be unlocked.

(2) When 3 beeps, red light is on, unlocking failed, please try again.

# PRODUCT TECHNICAL PARAMETERS

SN	Function	Content	Description
1	Unlocking Method	Fingerprints, Passwords Tuya App, Key	
2	Number Of Users	200 Groups	Includes administrators and regular users
3	Cryptographic	100 Groups	Password needs to be entered 2 times【🔑】key to confirm (6~10 digit password, both times must be the same!)
4	Low Voltage Alarm	$4.8V \pm 0.2V$	When the voltage is lower than 4.8V, the red light blinks 5 times, prompting “the battery is low, please replace the battery”, and there are still 100times left to unlock the door, when it is lower than 4.5V, the door lock will not be able to unlock.
5	Static Current	$\leq 80\mu A$	
6	Dynamic Current	$\leq 250mA$	
7	Supply Voltage	6V	New battery voltage (select a high quality #6 1.5V alkaline battery).
8	Operating Temperature	$-25^{\circ}C \sim 65^{\circ}C$	
9	Operating Humidity	20%~90%RH	
10	False Alarm	Support	Five consecutive failures will result in a 1-minute pause
11	Quick Lock	Outdoor Lockout	Press【🔒】It can be used as a lock or a return key
12	Wired Door Magnet	(Support for optional products only)	Install the door magnet and plug in the power cord, turn on the door magnet function in APP, it will lock automatically when closing the door.

## Tips ⚠️

- (1) The first user should set a password in the app.
- (2) Local input information will be granted administrator privileges and automatically associated with【Family Members】in the application.
- (3) Do not manually programme locally unless necessary, mobile apps are much more convenient.



Version: DS04-24.05-V2.0

This device complies with part 15 of the FCC Rules. Operation is subject to the following two conditions: (1) This device may not cause harmful interference, and (2) this device must accept any interference received, including interference that may cause undesired operation.

Any Changes or modifications not expressly approved by the party responsible for compliance could void the user's authority to operate the equipment.

**Note:** This equipment has been tested and found to comply with the limits for a Class B digital device, pursuant to part 15 of the FCC Rules. These limits are designed to provide reasonable protection against harmful interference in a residential installation. This equipment generates uses and can radiate radio frequency energy and, if not installed and used in accordance with the instructions, may cause harmful interference to radio communications. However, there is no guarantee that interference will not occur in a particular installation. If this equipment does cause harmful interference to radio or television reception, which can be determined by turning the equipment off and on, the user is encouraged to try to correct the interference by one or more of the following measures:

- Reorient or relocate the receiving antenna.
- Increase the separation between the equipment and receiver.
- Connect the equipment into an outlet on a circuit different from that to which the receiver is connected.
- Consult the dealer or an experienced radio/TV technician for help.

#### FCC Radiation Exposure statement

The device has been evaluatec to meel general RF exposure requirement. The device can be used in porlable exposure condition without restriction.