



REMOTE CONTROL DINOSAUR MANUAL

DINOSAUR WORLD



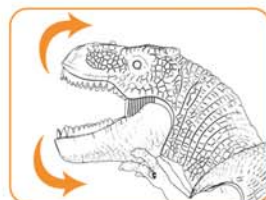
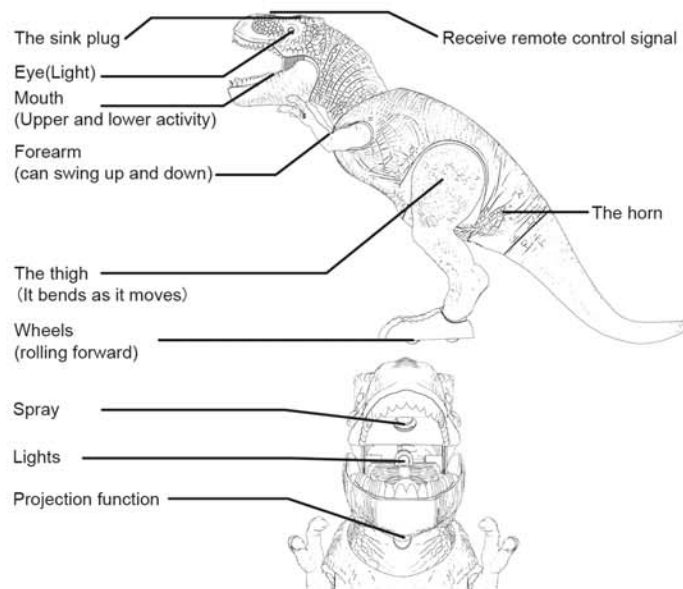
MADE IN CHINA



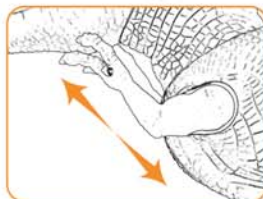
 NOT SUITABLE FOR CHILDREN UNDER 3 YEARS DUE TO SMALL PARTS غير مناسب للأطفال أقل من 3 سنوات بسبب الأجزاء الصغيرة COUNTRY OF ORIGIN: CHINA بلد المنشأ: الصين	 Tested according to international standards	 PRECAUCIONES: PELIGRO DE AHOGARSE. Contiene partes pequeñas. No recomendado para niños menores de 3 años.
---	--	--



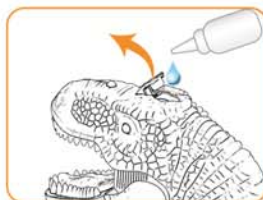
Part function description



The head can swing up and down



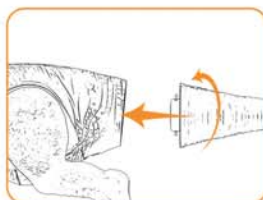
Forearm swing up and down



Add water



Spray

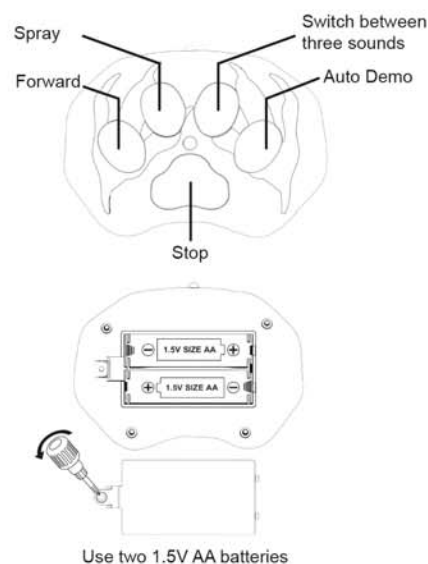


Assemble the tail



Forward/backward

Function description of remote control



Functional description

1. Turn on the switch of Tyrannosaurus Rex, press and hold the forward button on the remote control, and the space dinosaur begins to walk forward

2. Use the Function button to switch function mode

Press the eject button to activate the Ejection function of the T-Rex (put some water in the sink before use).

Press the music button to activate the chirping function of T-Rex. There are three sound modes to switch between

Press the automatic button to activate the function demonstration mode of Tyrannosaurus Rex.

Press the pause button, and all tyrannosaurus rex actions will stop

Precautions for battery use

Battery precautions

- The toy USES 3 1.5V AA batteries; The remote control USES 2 1.5V AA batteries
- Do not charge the battery, or it may cause explosion and other dangerous accidents
- How to install and remove the battery: Please use a screwdriver to unscrew the battery case, remove the battery cover, and place or remove the battery on the battery case according to the correct polarity mark as required
- Use only the same model and type of battery recommended
- Do not mix old and new batteries or different types of batteries
- The used battery should be removed from the toy

FCC Statement

This device complies with part 15 of the FCC Rules. Operation is subject to the following two conditions: (1) This device may not cause harmful interference, and (2) this device must accept any interference received, including interference that may cause undesired operation.

This equipment has been tested and found to comply with the limits for a Class B digital device, pursuant to part 15 of the FCC Rules. These limits are designed to provide reasonable protection against harmful interference in a residential installation. This equipment generates, uses and can radiate radio frequency energy and, if not installed and used in accordance with the instructions, may cause harmful interference to radio communications. However, there is no guarantee that interference will not occur in a particular installation. If this equipment does cause harmful interference to radio or television reception, which can be determined by turning the equipment off and on, the user is encouraged to try to correct the interference by one or more of the following measures:

- Reorient or relocate the receiving antenna.
- Increase the separation between the equipment and receiver.
- Connect the equipment into an outlet on a circuit different from that to which the receiver is connected.
- Consult the dealer or an experienced radio/TV technician for help.

Caution: Any changes or modifications to this device not explicitly approved by manufacturer could void your authority to operate this equipment.

RF Exposure Information

The device has been evaluated to meet general RF exposure requirement. The device can be used in portable exposure condition without restriction.