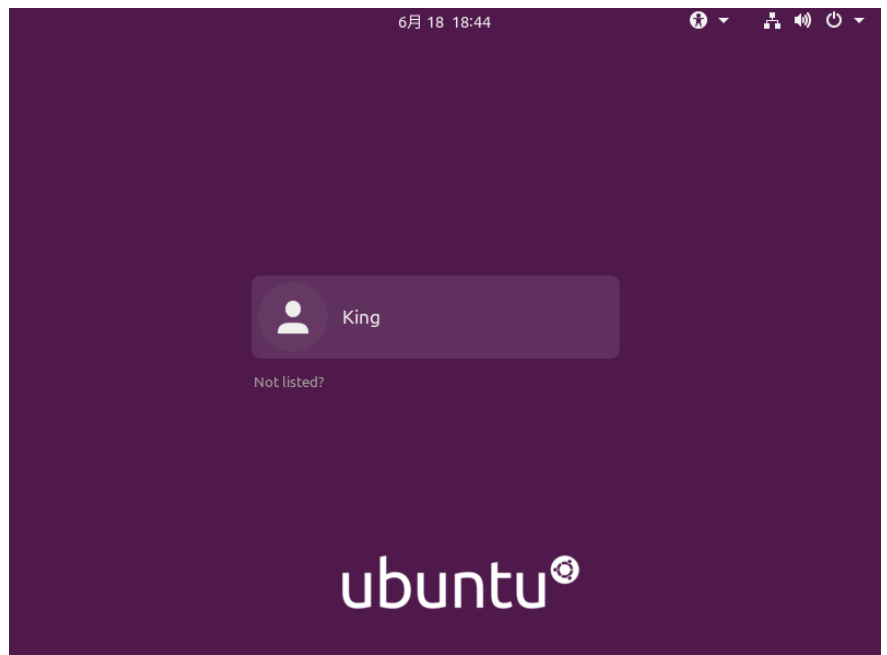


2020-6-18

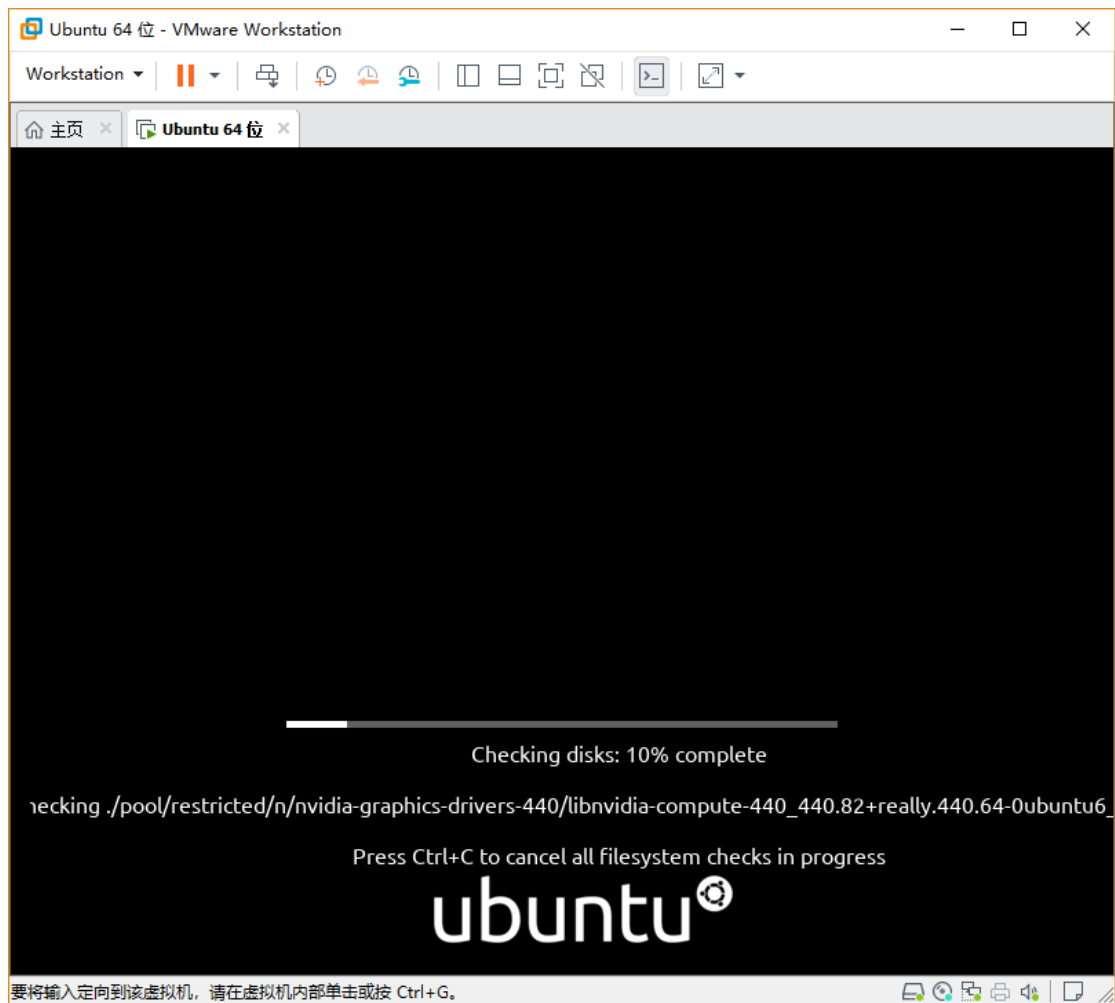
Ubuntu20.04

Vmware 虚拟机

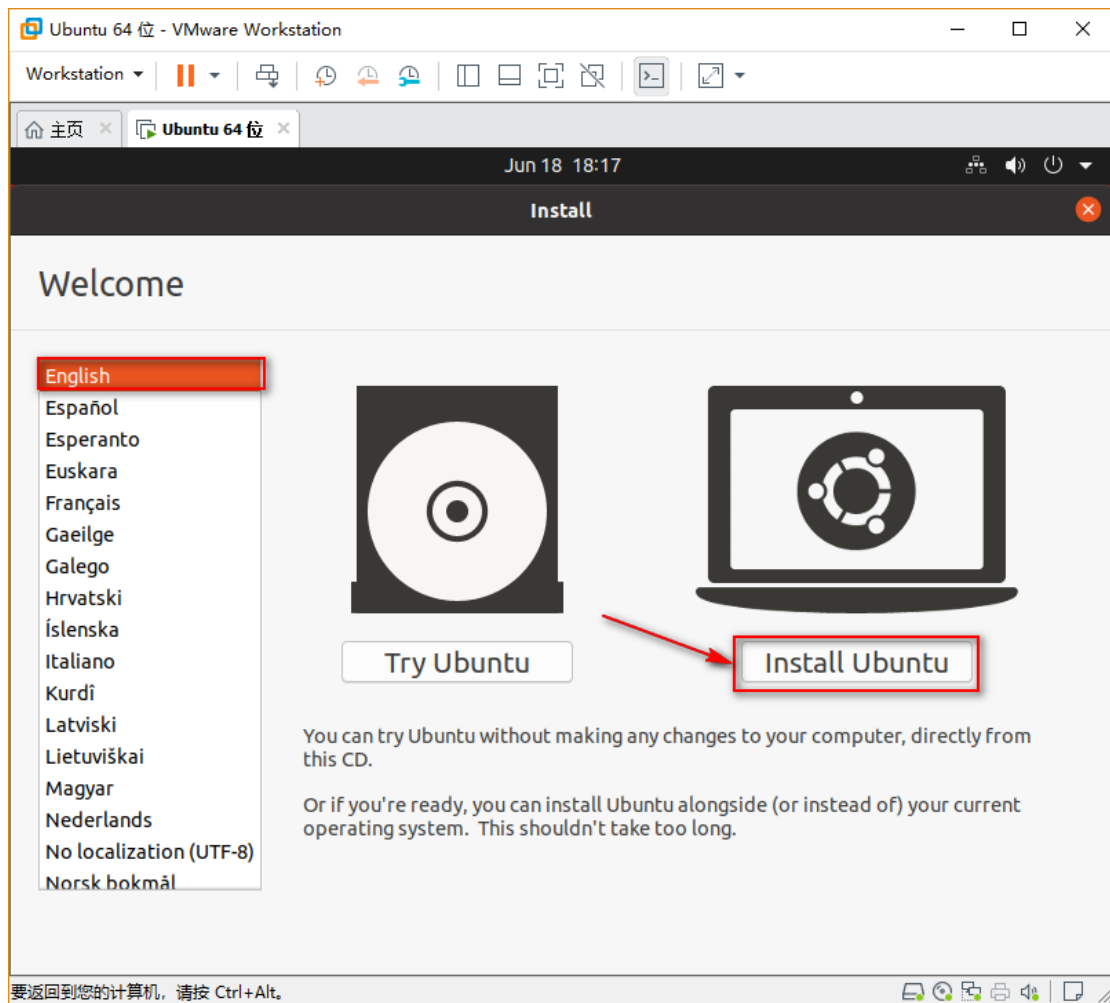


一、Prepare tools

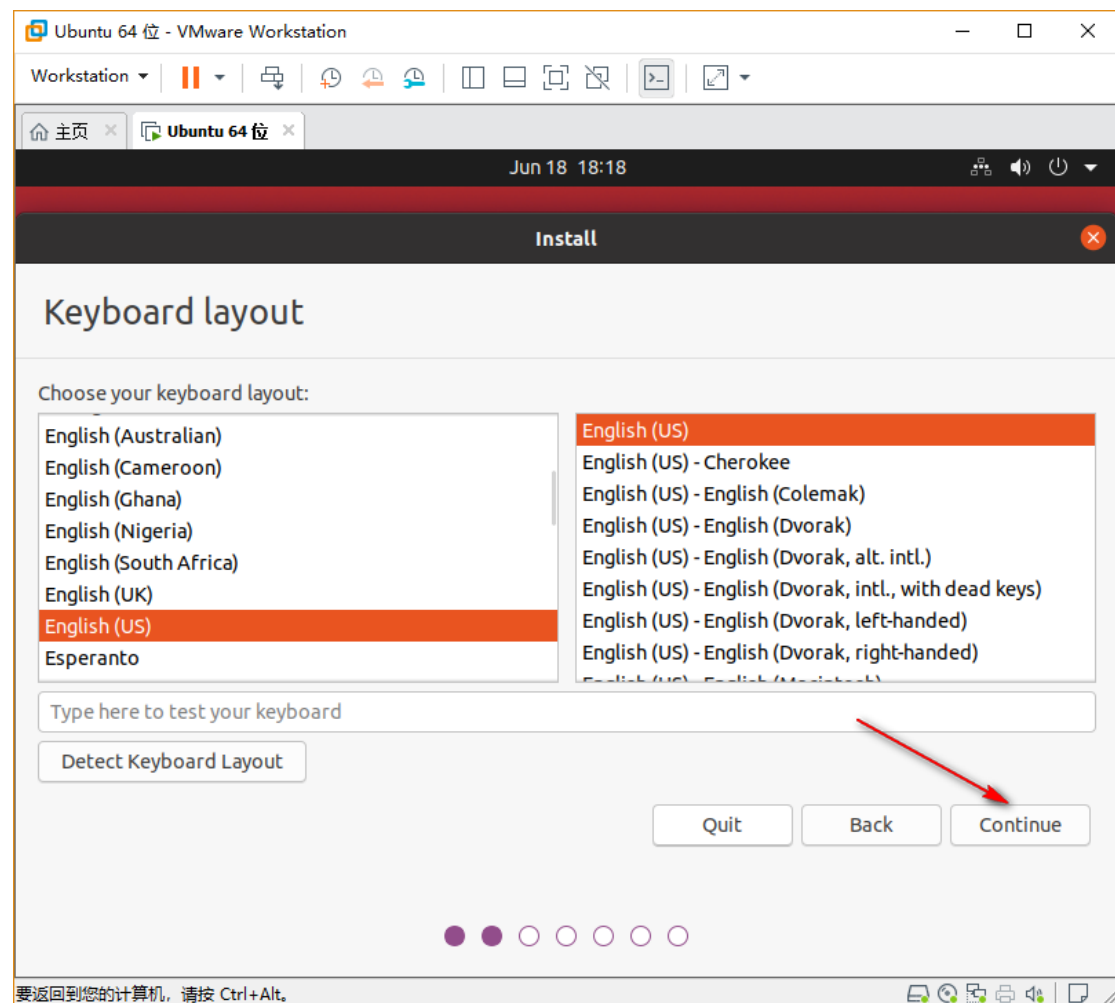
- VMWare Workstation15 Pro;
- ubuntu-20.04-desktop-amd64.iso;



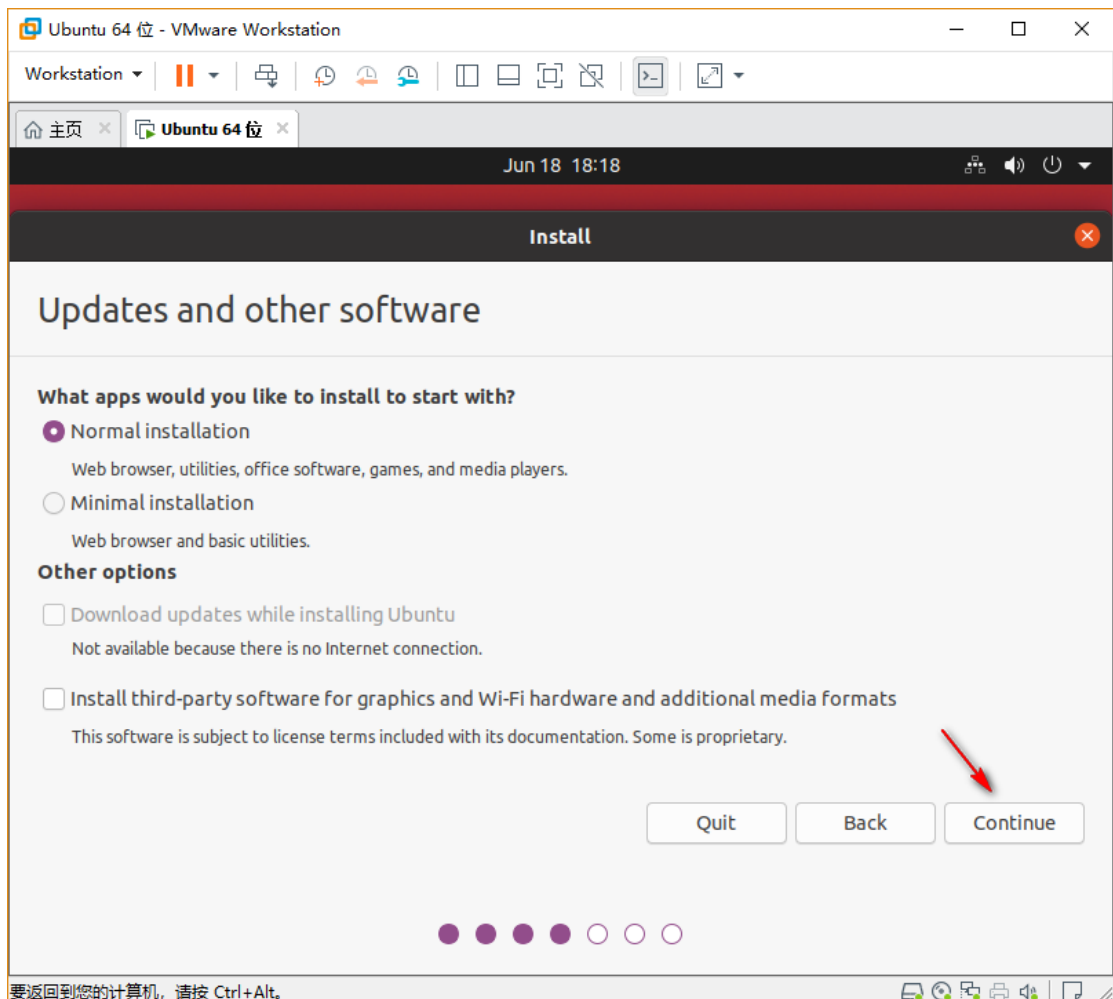
3) In the pop-up "Welcome" interface, you need to select the system language you want to Install and Try Ubuntu or Install Ubuntu. In this case, you should select Install Ubuntu. In addition, it is strongly recommended to select English instead of Chinese as the language. In order to avoid Chinese characters appearing in the folder name after installation, it is inconvenient to enter commands during use;



4) Under the keyboard layout option screen, you need to specify the keyboard layout format. You can use the default configuration here. It is strongly recommended that you do not change other configuration, otherwise, the key value of the keyboard will not match the key sequence of the keyboard you use after installation.

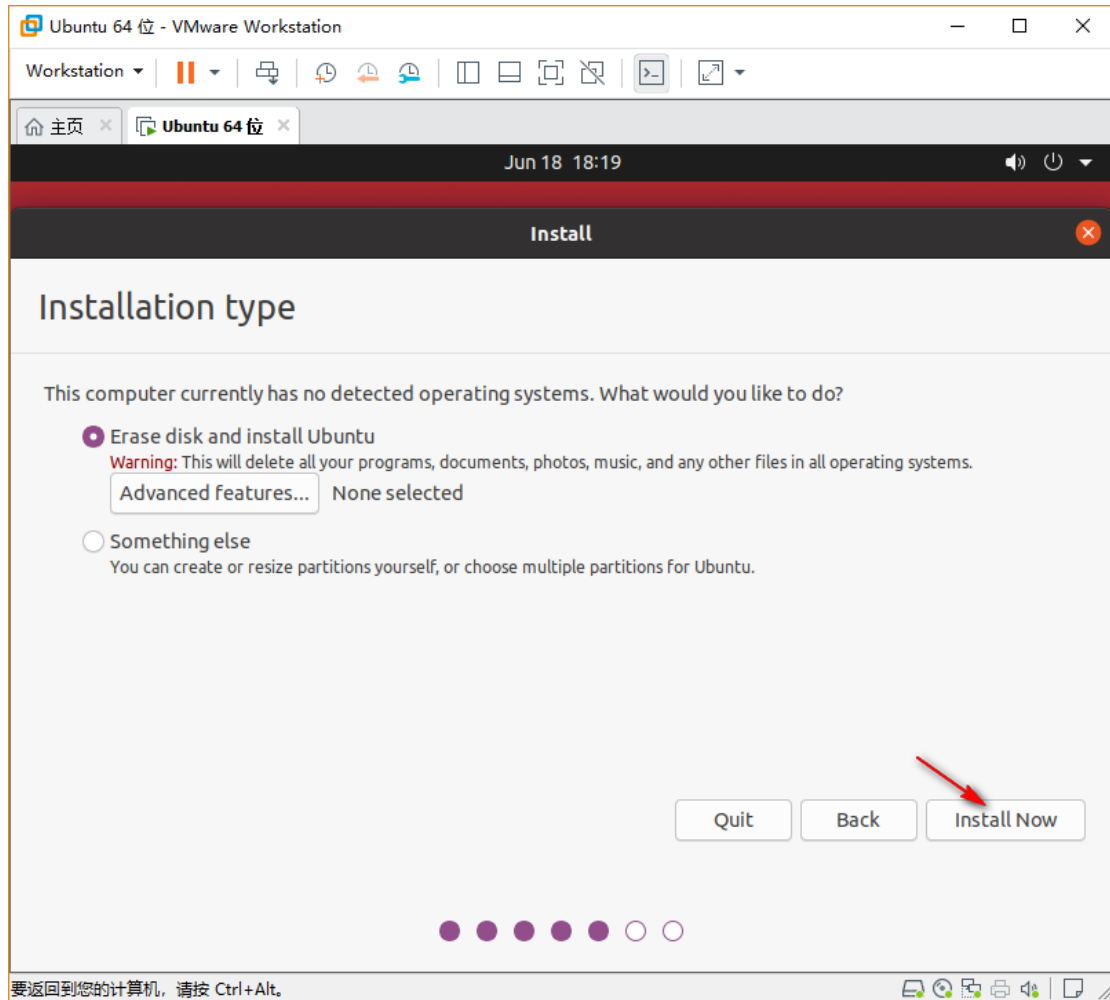


5) In the Update and other software option, you are advised to deselect Download updates while installing Ubuntu. In this way, only the native system will be installed during the installation process, and the system will not be updated through the network. Will greatly save the time to install the system; In addition, it is recommended to select the "Normal installation" option, which will configure a graphical interface for the system. If you select "Mininal installation", it is the minimum system installation without a graphical interface, which is inconvenient for the desktop system.

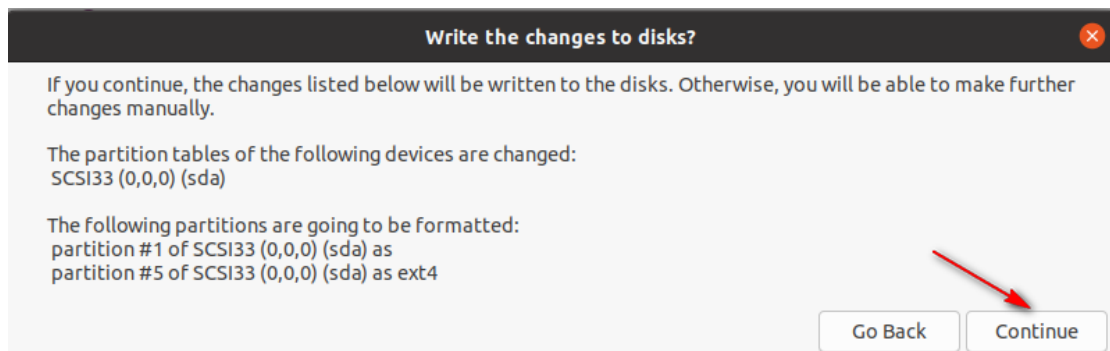


6) 要返回到您的计算机, 请按 Ctrl+Alt.

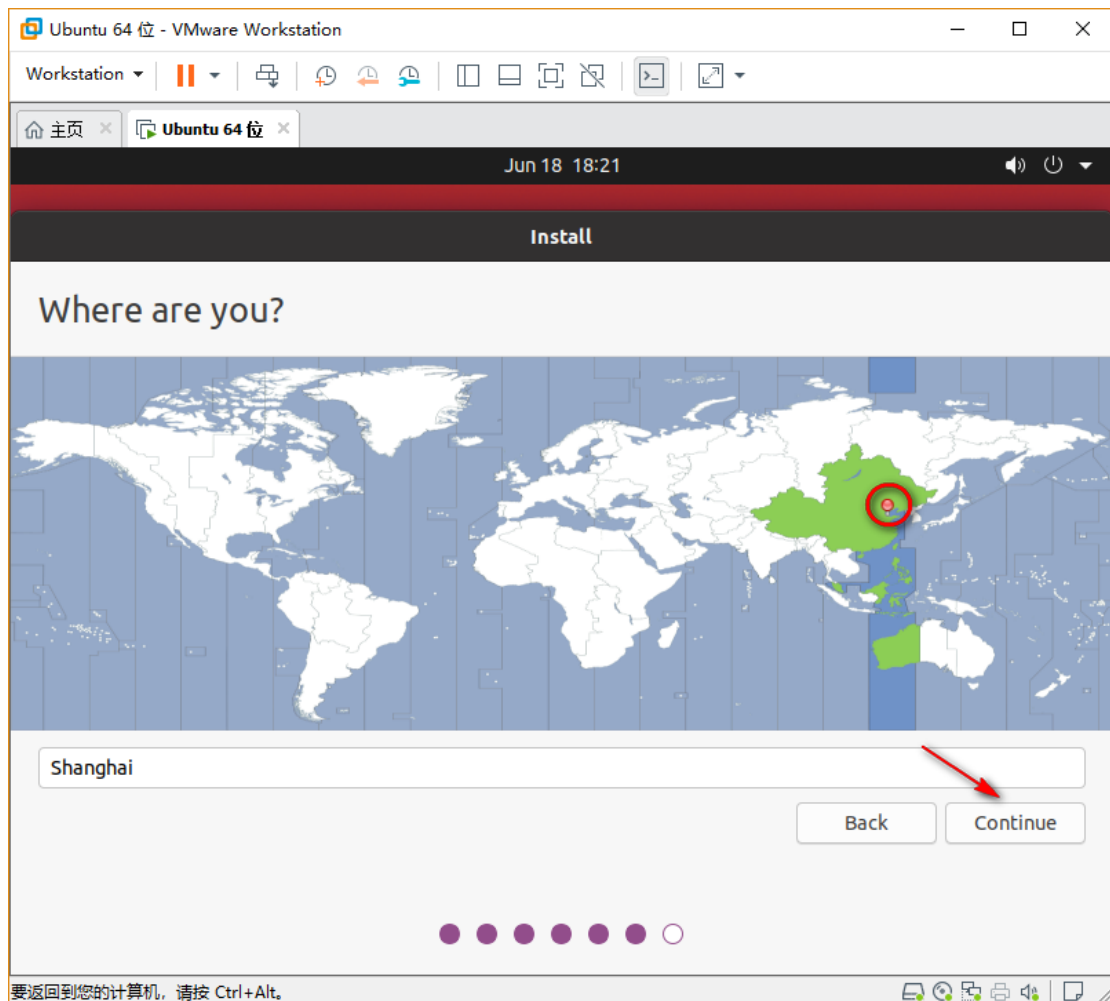
6) In the Installation type option, you need to specify the operation on the hard disk. If you install the hard disk for the first time, select Erase disk and install Ubuntu to erase the hard disk and install the Ubuntu system.



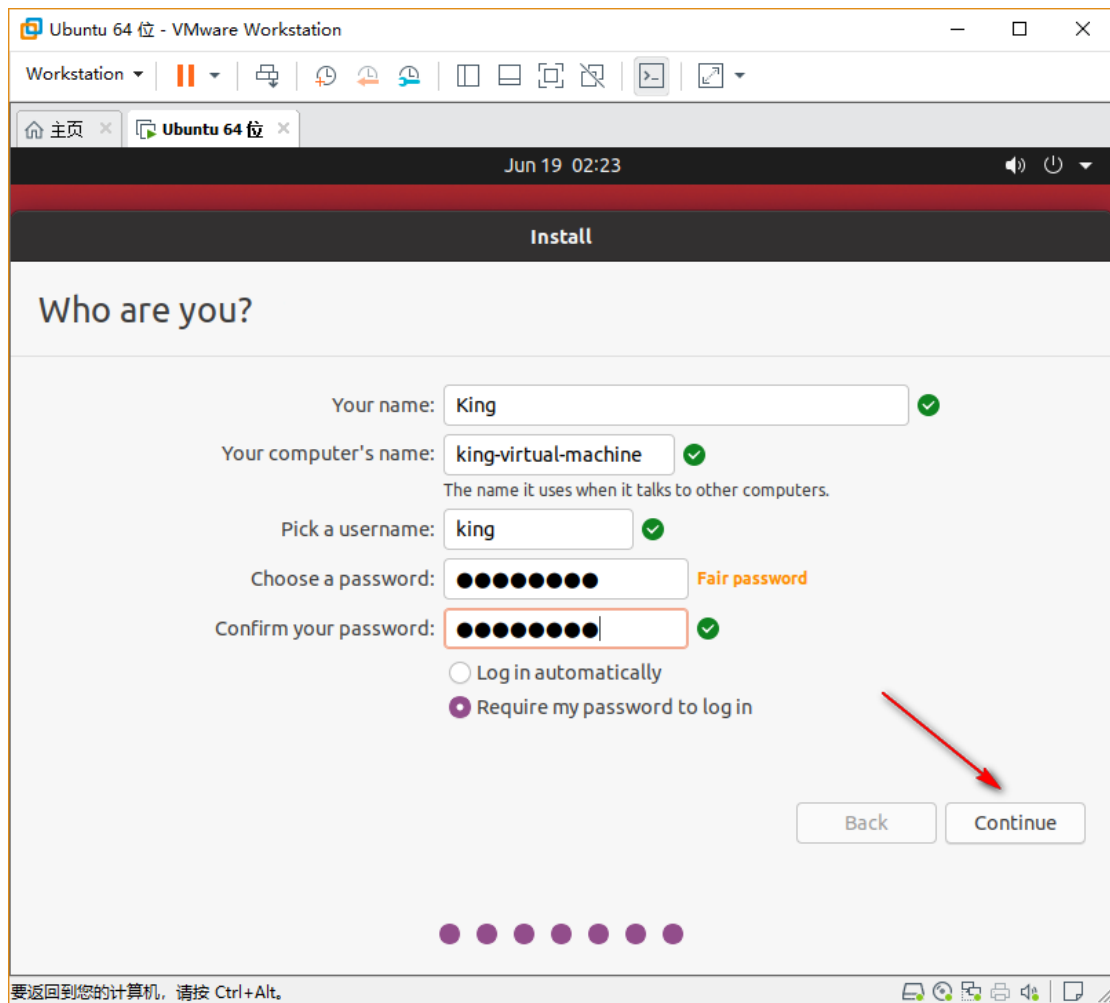
7) In the "Write the changes to disks" option that is displayed, the system will be prompted with the default partition mode. In this case, use the default partition mode and click Continue.



8) During the installation process, the system will be prompted to select the time zone where the system is located, so that the system can perform timely operation. You can directly select "Shanghai" in China by clicking on the corresponding location,

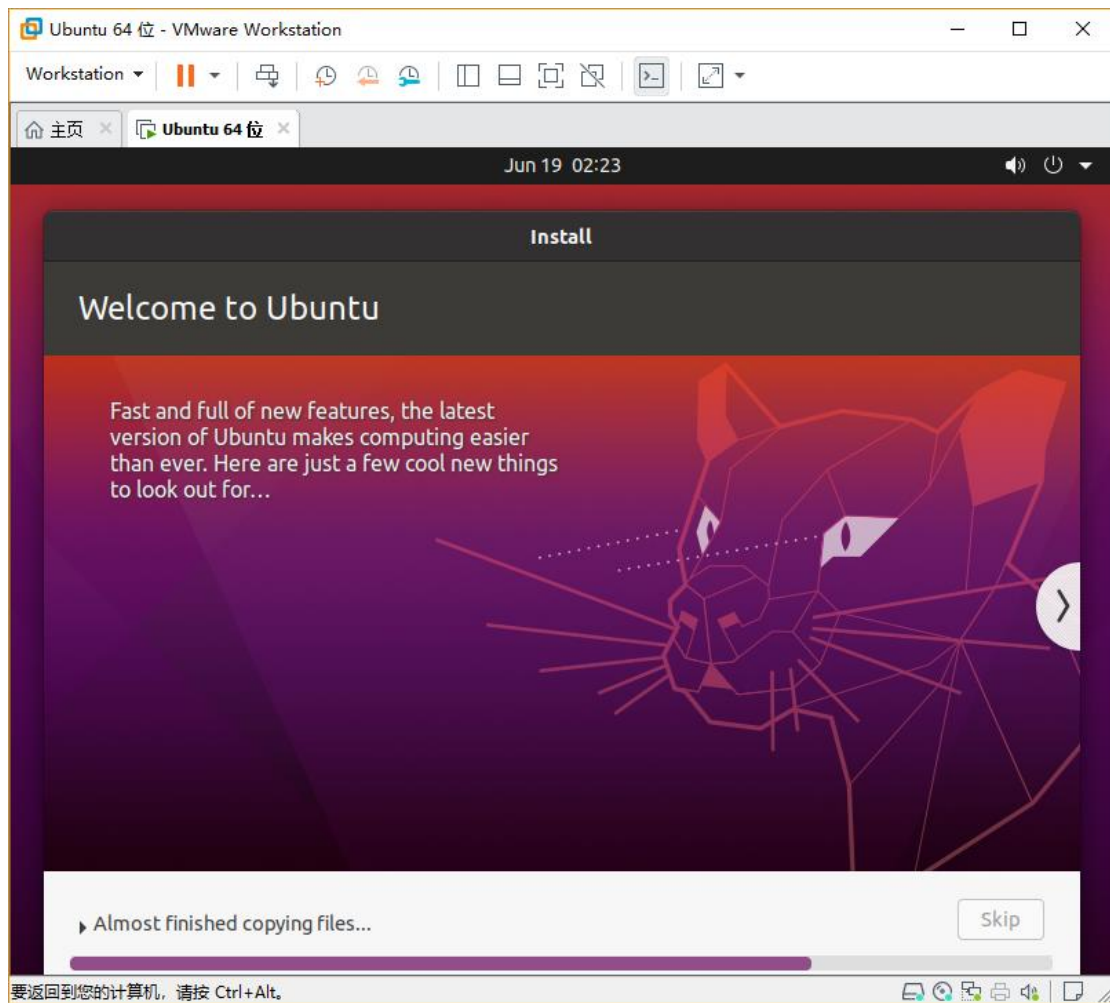


9) The Who are you page is displayed. It allows users to specify the user name, machine name, and password of the virtual machine system. You can enter the user name according to your preferences;



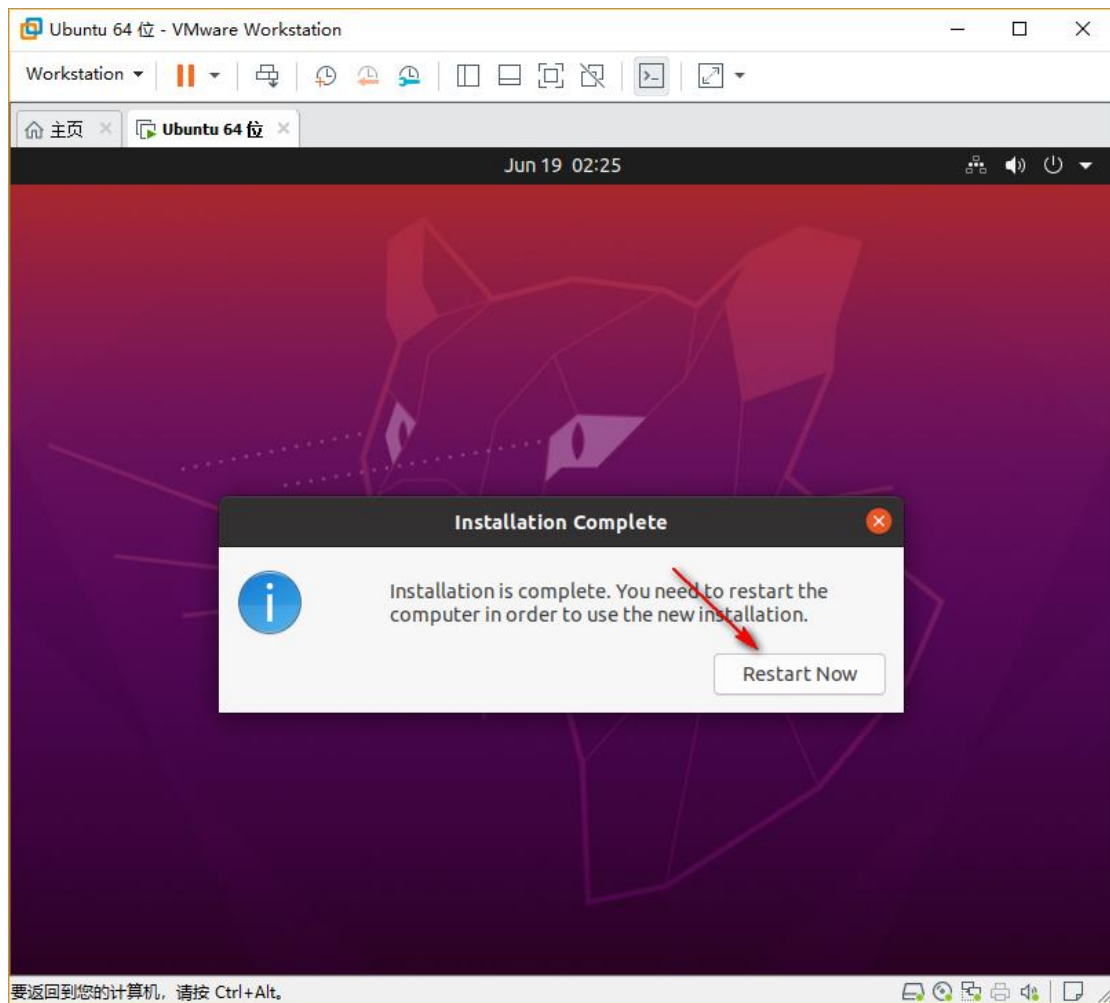
10) At this point, officially enter the system installation link, the following screen will appear, indicating that the system installation process is in progress,

Ubuntu20.04

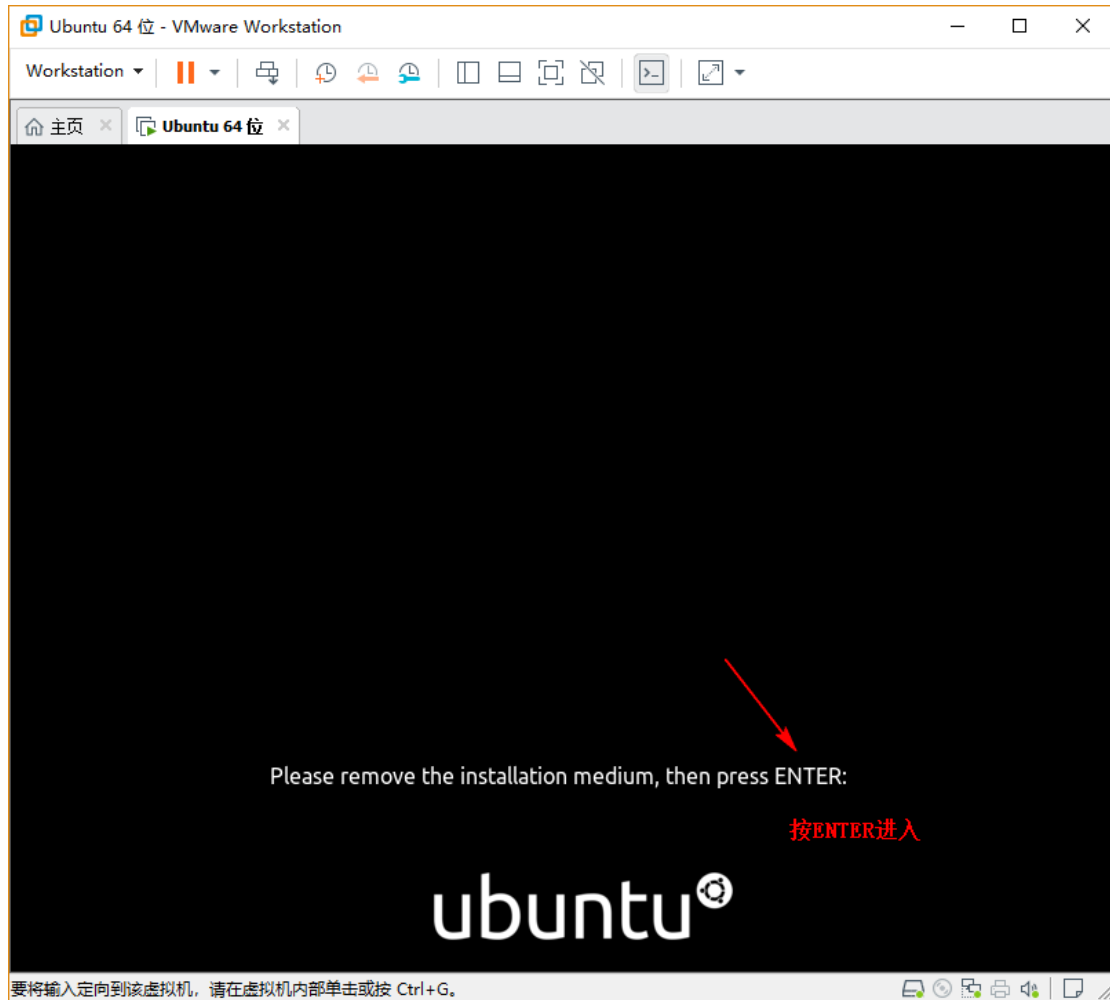


11) After the Installation is Complete, the Installation Complete dialog box is displayed, indicating that the installation is complete. In this case, click Restart Now to restart the OS and go to the Ubuntu20.04 VM system after the installation.

Ubuntu20.04

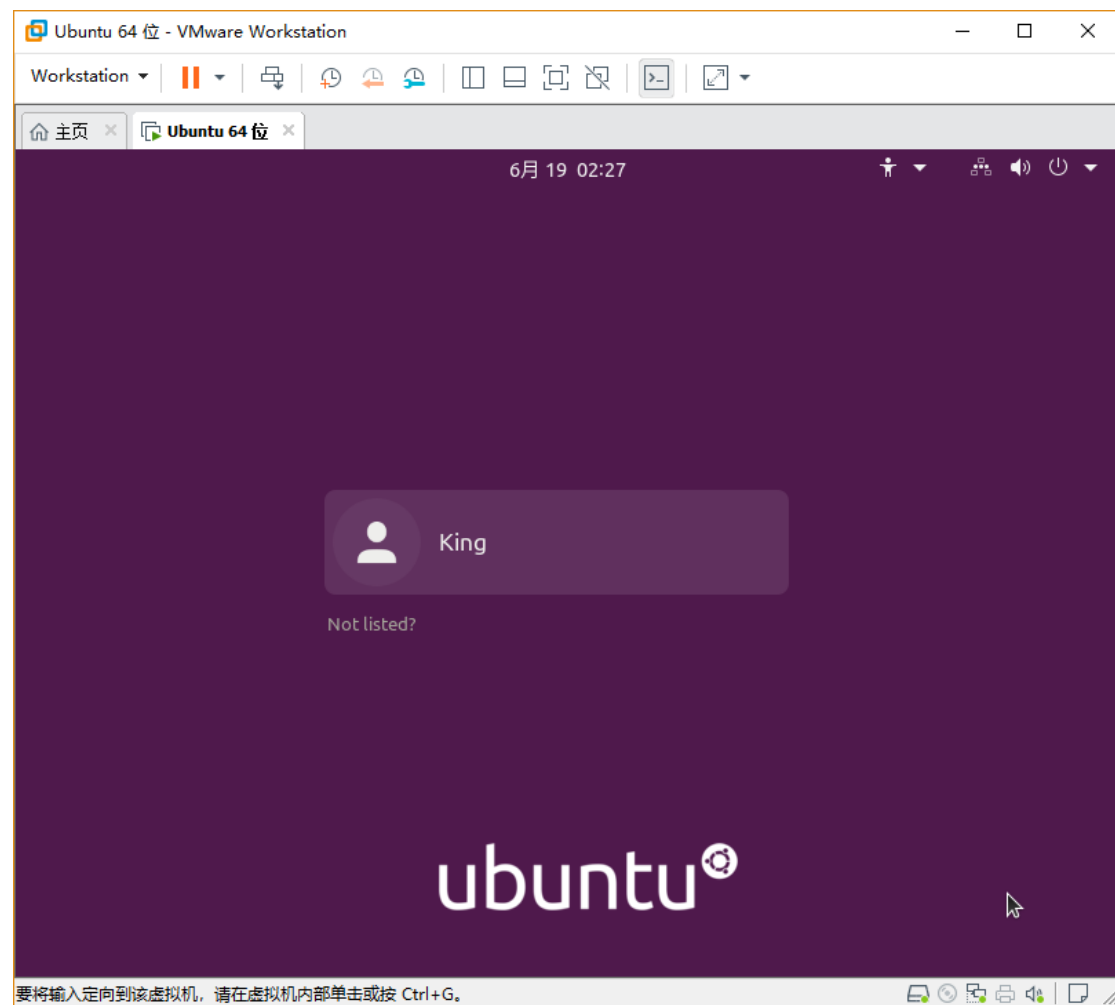


Ubuntu20.04



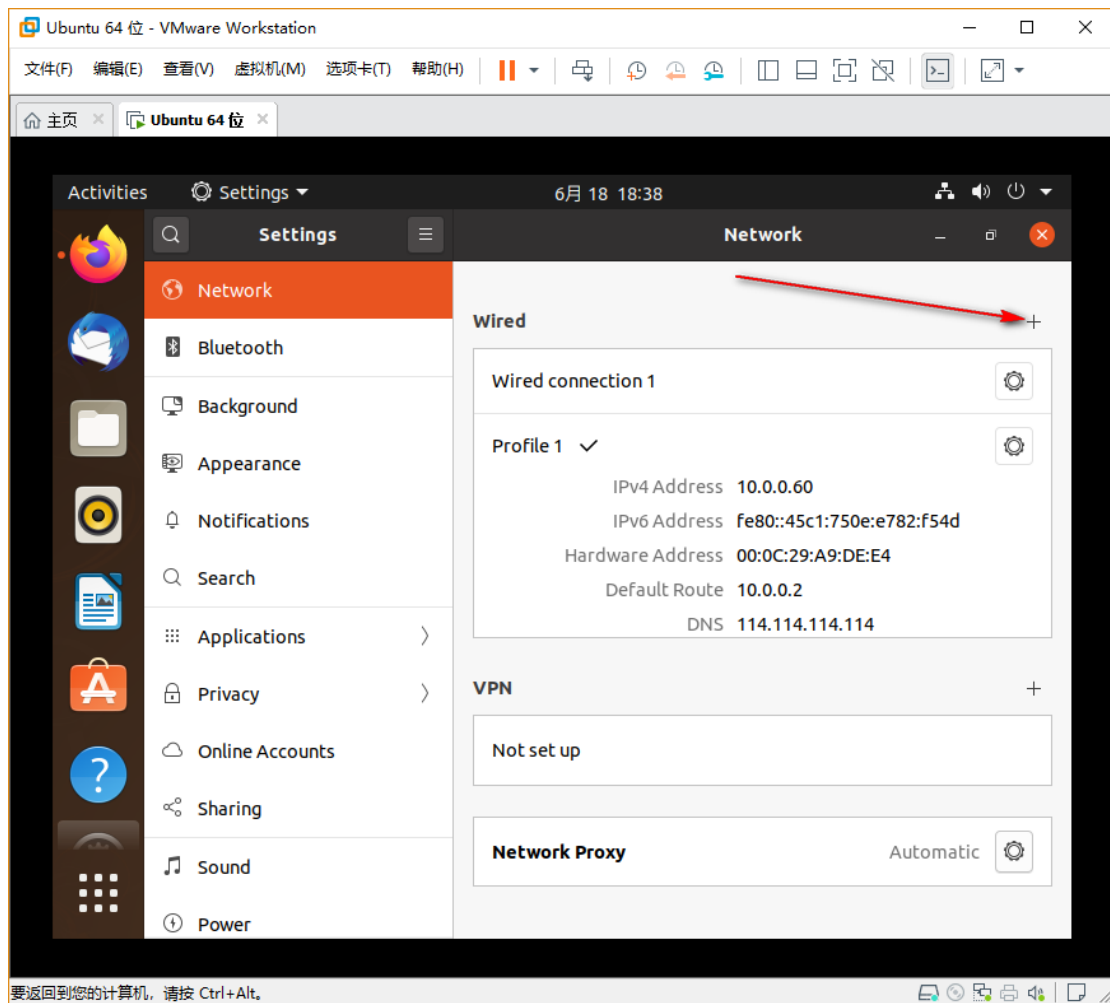
12) The following interface indicates that the system starts normally. Click the user name and enter the corresponding password to start enjoying the Ubuntu20.04 system.

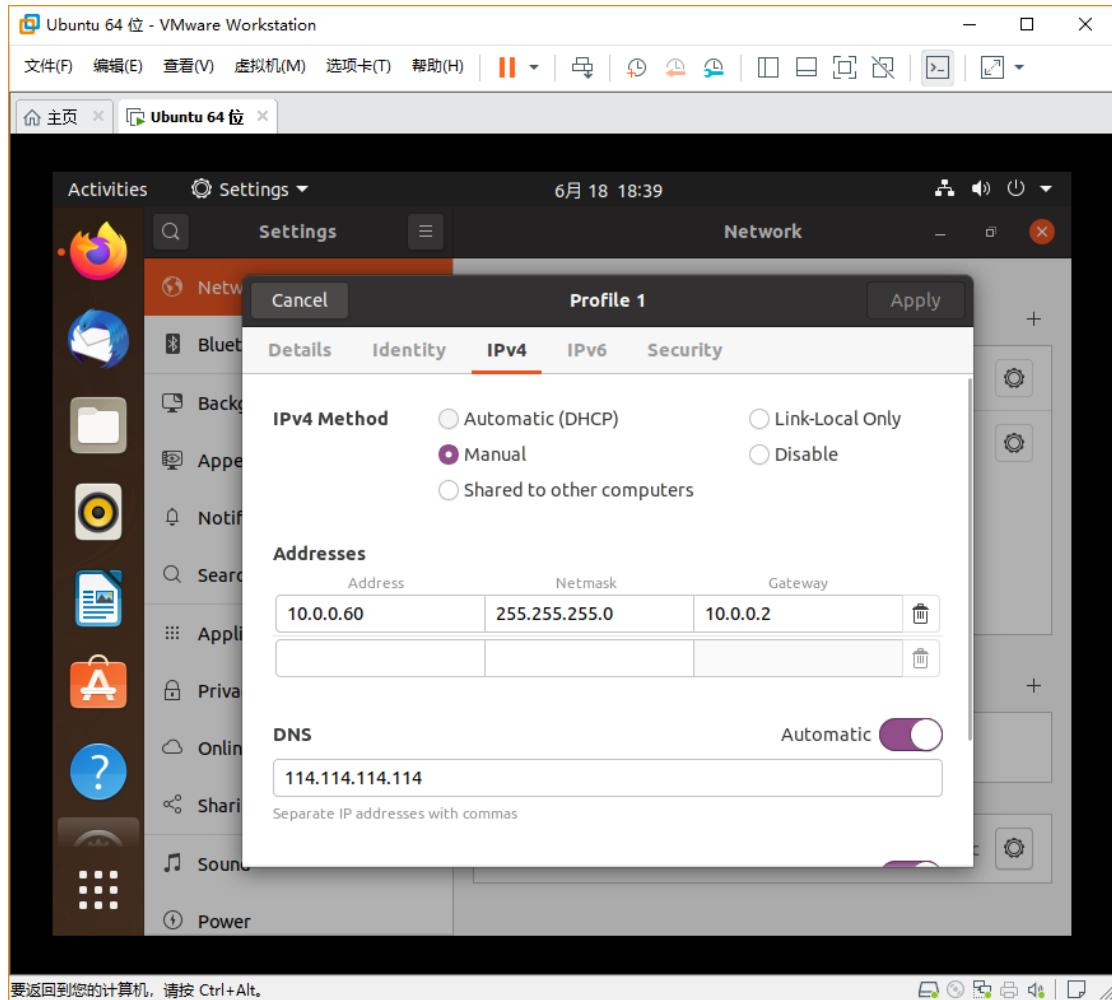
Ubuntu20.04

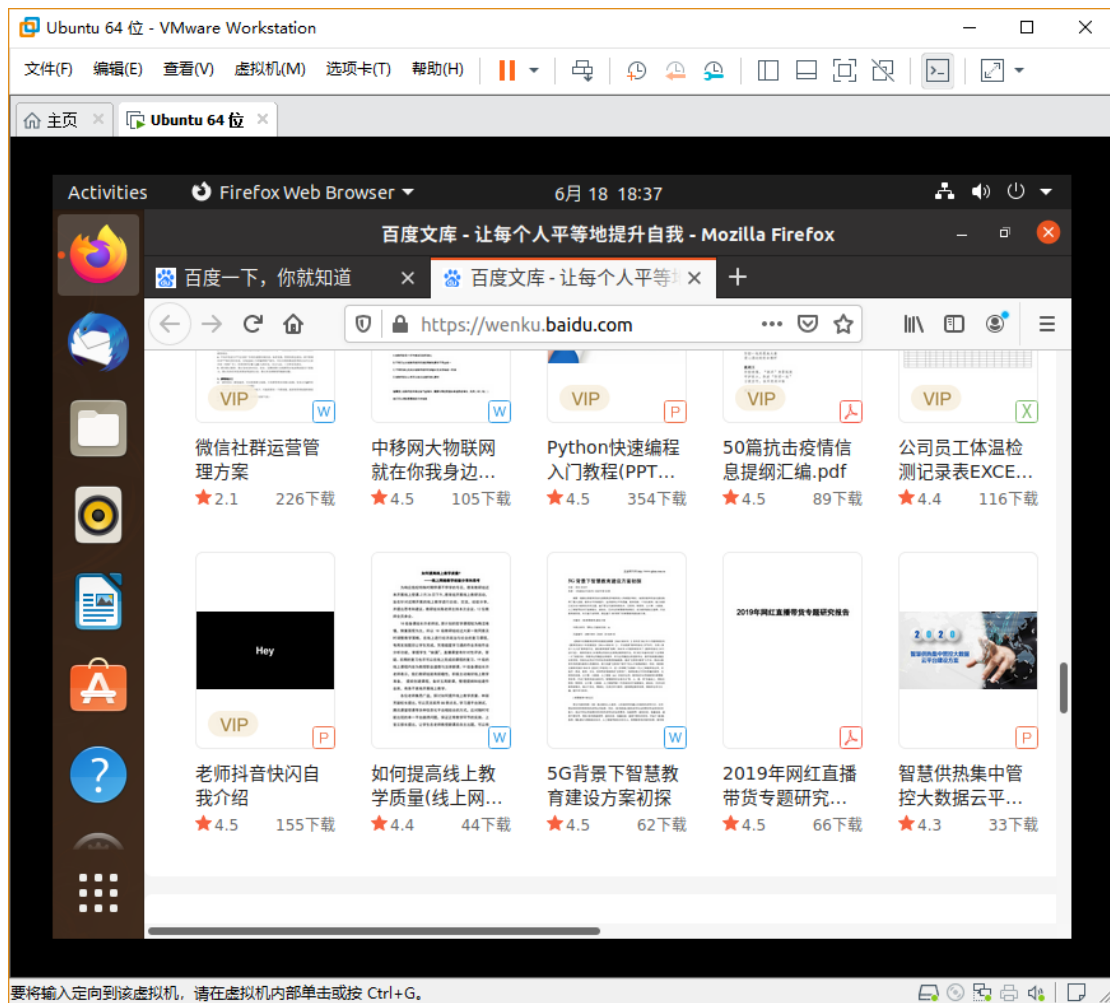


Set ip (NAT8), do not know how to set ip for NAT8 can be viewed

Logical diagram of three network modes for VMware VMS







FCC Caution.

This device complies with part 15 of the FCC Rules. Operation is subject to the following two conditions:

- (1) This device may not cause harmful interference, and
- (2) this device must accept any interference received, including interference that may cause undesired operation.

Any Changes or modifications not expressly approved by the party responsible for compliance could void the user's authority to operate the equipment.

Note: This equipment has been tested and found to comply with the limits for a Class B digital device, pursuant to part 15 of the FCC Rules. These limits are designed to provide reasonable protection against harmful interference in a residential installation. This equipment generates uses and can radiate radio frequency energy and, if not installed and used in accordance with the instructions, may cause harmful interference to radio communications. However, there is no guarantee that interference will not occur in a particular installation. If this equipment does cause harmful interference to radio or television reception, which can be determined by turning the equipment off and on, the user is encouraged to try to correct the interference by one or more of the following measures:

- Reorient or relocate the receiving antenna.
- Increase the separation between the equipment and receiver.
- Connect the equipment into an outlet on a circuit different from that to which the receiver is connected.
- Consult the dealer or an experienced radio/TV technician for help.

*RF warning for Mobile device:

This equipment complies with FCC radiation exposure limits set forth for an uncontrolled environment. This equipment should be installed and operated with minimum distance 20cm between the radiator & your body.