

# X-STAR™ REMIX



## Let's start?

Quick start guide

# What will you need

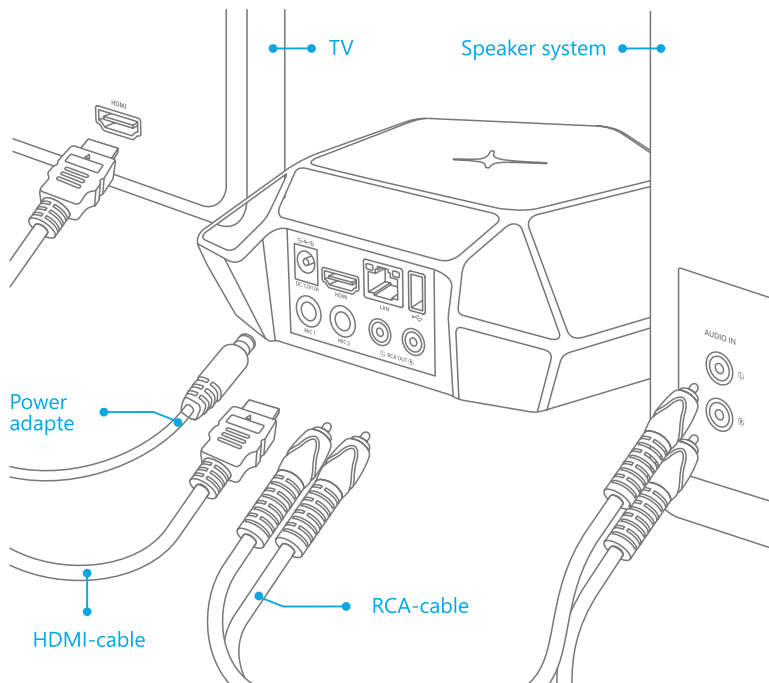
Here's what you'll need to start using the X-Star Karaoke Remix:

- TV or monitor with HDMI port
- Speaker system with analog input interface (RCA)
- Internet connection via Wi-Fi or Ethernet

## Connection

1. Using an HDMI cable, connect the karaoke box to your TV.
2. Using an RCA cable, connect the karaoke set-top box to the speaker system\*.
3. Connect the karaoke box to the power, using the power adapter which comes with a karaoke box. Karaoke box will automatically power on as you plug it in and you will see the blue light on top.
4. Turn on your TV and change to the correct HDMI input.
5. Follow the on-screen prompts to complete the initial setup.
6. Done!

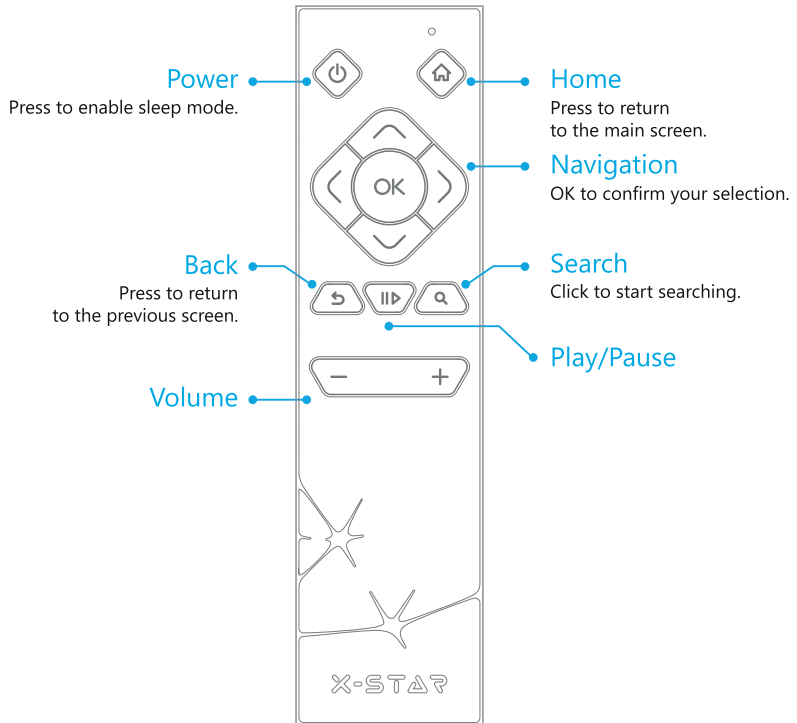
*\*Audio playback is possible only through analog RCA outputs. HDMI audio playback is not available.*



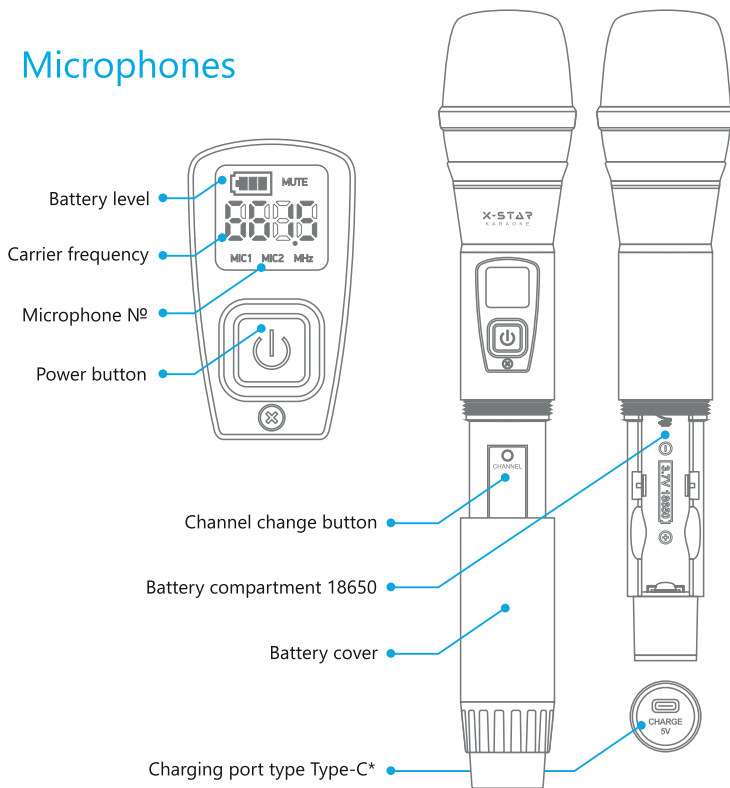
**WARNING!**

Failure to follow instructions could result in fire, electric shock, personal injury or equipment damage.

# Remote control functions



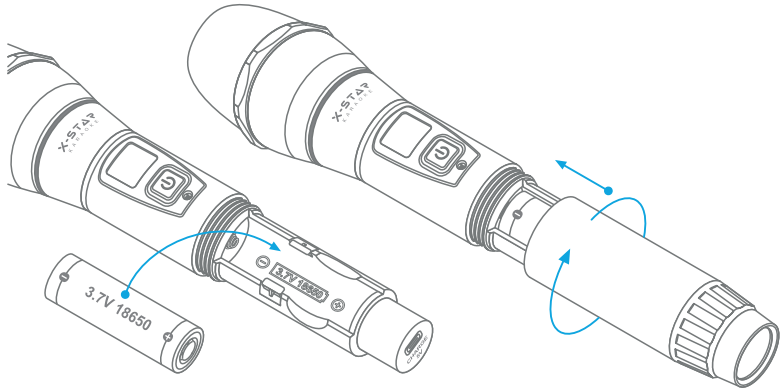
# Microphones



\* You can use a 5V = 1 A or 5 B = 2 A USB power adapter as a power source..

To start using the microphone, you need to install the battery:

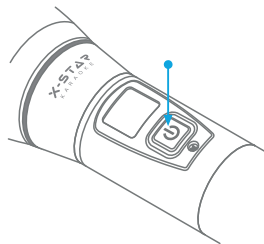
- Unscrew the battery cover counterclockwise.
- Observe the polarity of the contacts - "+" at the bottom, "-" at the top - insert the battery 18650 that is included.
- Screw the battery cover clockwise.



Use color matched anti-rolls to prevent microphones from rolling off the desk and other horizontal surfaces.

## Power button

- Short press - turn on the microphone.
- Long press - to turn off the microphone when it's on.
- Mute microphone - short press when the microphone is on. After pressing, the microphone display shows Mute and the carrier frequency disappears. A second short press unmute microphone.

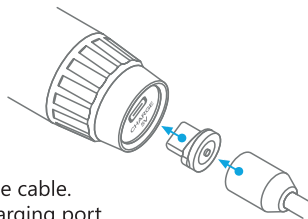


## Microphone charging

The karaoke box comes with a dual USB cable with a detachable Type-C magnetic tip.

For charging microphones:

- Disconnect the Type-C magnetic tip from the cable.
- Plug the Type-C tip into the microphone charging port.
- Use a magnet to connect the main cable to the back of the tip in the microphone\*.
- Plug the other end of the USB cable into the power adapter (5V = 1A or 5V = 2A) or the USB socket on the back of the karaoke box.
- For a quick connection, the magnetic tip can be left inside of the microphone charging port.



*\* Magnetizing the end of the cable to other metal surfaces may damage the cable, power adapter, karaoke box, or cause a fire.*

# Troubleshooting

## The microphone does not turn on:

- Check the correct installation of the battery according to the polarity: "+" should be at the bottom.
- Discharged battery. Connect the included USB Type-C cable to the microphone charging port and then to the power adapter (5V = 1A or 5V = 2A) or USB socket on the back of the karaoke box.

## Bad signal or playback noise:

- The karaoke box is in the wrong place. For efficient and correct operation of microphones, the karaoke box must be at least 0.5 meters away from walls, floors and metal surfaces.
- External electromagnetic interference. To eliminate interference, switch the microphone to a different channel.
- The distance to the karaoke box is too far or there are obstacles in the way. The range of the radio signal of the microphones is up to 30 m, the range is highly dependent on obstacles and interference, including within the same room.



## The microphone is on, but there is no sound:

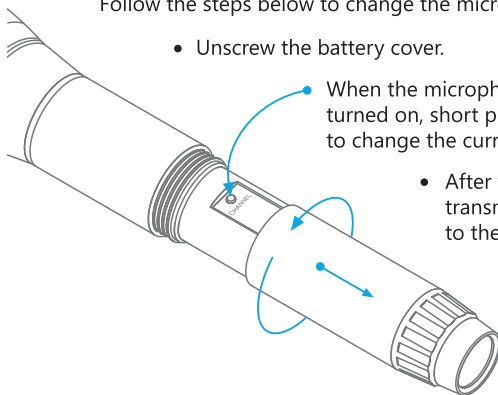
- Make sure the microphone is connected to the karaoke box.  
On the main screen and in the settings, the connection status of each microphone is displayed. When the microphone is turned on and the connection with the karaoke box is established, the active state of the microphone will be highlighted accordingly.
- If after turning on the microphones there is no connection with the karaoke box, you need to connect the microphone: Go to "Settings" - "Karaoke" - "Microphones" and follow the prompts on the screen.
- Check if the karaoke box is connected to the speaker system correctly - using RCA audio cables.
- If the connection to the speaker system is correct, check that the volume of the microphones on the karaoke box is set above 0.  
You can change the volume of the microphones: in the settings, on the playback screen, using the X-Star Karaoke mobile app after connecting to the karaoke box.

## Changing the microphone channel

Each microphone has 16 channels. Changing the channel can improve the quality of the radio signal, so the method of changing the channel is necessary if you have a problem with the quality of the microphone signal on the current channel.

Follow the steps below to change the microphone channel:

- Unscrew the battery cover.
- When the microphone and karaoke box are turned on, short press the "Channel" button to change the current channel.
- After that, the microphone will transmit changes about the channel to the karaoke box.



### IMPORTANT!

If the karaoke box during the time of changing the channel on the microphone was turned off or was outside the radius, the channel change data will not be transmitted. If the channel change happened in this way, you need to reconnect the microphone to the karaoke box. Open "Settings" - "Karaoke" - "Microphones" and follow the prompts on the screen.

# Changing the microphone number

Each microphone must have its own number:

Mic1 (purple), Mic2 (green). If there is a situation where both microphones have the same number, you need to change the number.

- With the microphone turned off, press and hold down the "Power button" for 10 seconds.

After changing the microphone number, you need to "Connect" the microphone to the karaoke box:

- Open "Settings"->"Karaoke"->"Microphones" and follow the prompts on the screen.



@xstarkaraoke

[WWW.X-STAR.COM](http://WWW.X-STAR.COM)

© X-STAR, 2022



You can learn more about how the karaoke box works at [support.x-star.com](http://support.x-star.com). The appearance of the device and the interface may differ from the description provided in this guide.

# Specifications

## Main:

- CPU Quad Core Cortex A53
- RAM 2G DDR4
- 8G eMMC
- Vocal DSP

## Microphones specs:

- Carrier frequency range: 660-690MHz
- Number of channels: 16
- Power supply: 18650 battery
- Charging: USB Type-C port 5 V, 0.5 A
- Battery life: ~12 hours

## Operating system:

- Android 9.0

## External interfaces:

- HDMI 2.0 ×1
- Ethernet 100 Mbps
- USB 2.0 ×1
- Audio outputs RCA ×2
- Microphone inputs TRS 6.3 ×2
- Wi-Fi 802.11ac (2.4G and 5G)
- Bluetooth 4.0 Low Energy

## Video:

- 4K UltraHD support
- Video: 2160p (4k), 1080i, 1080p, 720p, 576p, 480p, PAL, NTSC

## Other:

- Power supply: 12 B / 2 A

## Equipment:

- X-Star Karaoke Remix
- 2 wireless microphones
- 2 batteries 18650
- 2 colored anti-roll
- RCU (powered by 2 AAA batteries)
- HDMI-cable
- Power adapter 12V / 2A (100-240V / 50-60Hz)
- USB-cable Type-C for charging microphones
- User guide
- Audio cable RCA-RCA



*The terms HDMI™ and HDMI High-Definition Multimedia Interface, and the HDMI Logo are trademarks or registered trademarks of HDMI Licensing LLC in the United States and other countries.*

NOTE: This equipment has been tested and found to comply with the limits for a Class B digital device, pursuant to part 15 of the FCC Rules. These limits are designed to provide reasonable protection against harmful interference in a residential installation. This equipment generates, uses and can radiate radio frequency energy and, if not installed and used in accordance with the instructions, may cause harmful interference to radio communications. However, there is no guarantee that interference will not occur in a particular installation. If this equipment does cause harmful interference to radio or television reception, which can be determined by turning the equipment off and on, the user is encouraged to try to correct the interference by one or more of the following measures:

- Reorient or relocate the receiving antenna.
- Increase the separation between the equipment and receiver.
- Connect the equipment into an outlet on a circuit different from that to which the receiver is connected.
- Consult the dealer or an experienced radio/TV technician for help.

Warning: Changes or modifications not expressly approved by the party responsible for compliance could void the user's authority to operate the equipment.

#### IC STATEMENT

This device contains licence-exempt transmitter(s)/receiver(s) that comply with Innovation, Science and Economic Development Canada's licence-exempt RSS(s). Operation is subject to the following two conditions:

- (1) This device may not cause interference.
- (2) This device must accept any interference, including interference that may cause undesired operation of the device

L'émetteur/récepteur exempt de licence contenu dans le présent appareil est conforme aux CNR d'Innovation, Sciences et Développement économique Canada applicables aux appareils radio exempts de licence. L'exploitation est autorisée aux deux conditions suivantes :

1. L'appareil ne doit pas produire de brouillage;
2. L'appareil doit accepter tout brouillage radioélectrique subi, même si le brouillage est susceptible d'en compromettre le fonctionnement.

The distance between user and device should be no less than 20cm.  
la distance entre l'utilisation et l'appareil ne doit pas être inférieure à 20 cm.