

## Front

 **IMPORTANT**   
**PLEASE DO NOT RETURN TO STORE**

If You're Having Trouble, We're Here to Help!



Call us 24/7 at 1-855-292-4087

E-mail us at [alsupport@sakar.com](mailto:alsupport@sakar.com) or visit us at [altec Lansing.com](http://altec Lansing.com)

## Rear

### REGISTER YOUR PRODUCT

To receive news, exclusive deals, OTA or  
firmware updates, warranty information and  
more please register your product at

**[altec Lansing.com/support](http://altec Lansing.com/support)**



**WELCOME** 

Thank you for purchasing an Altec  
Lansing product. Download our  
App to unlock all the features our  
products have to offer!



follow us  
[@altec Lansingofficial](https://www.facebook.com/altec Lansingofficial)



follow us  
[@altec Lansing](https://www.tiktok.com/@altec Lansing)



follow us  
[@altec Lansingofficial](https://www.instagram.com/altec Lansingofficial)

### 12 Month Limited Warranty

All Altec Lansing products come with  
12 month limited warranty  
from the date of its original purchase

### 24 Hour Customer Support

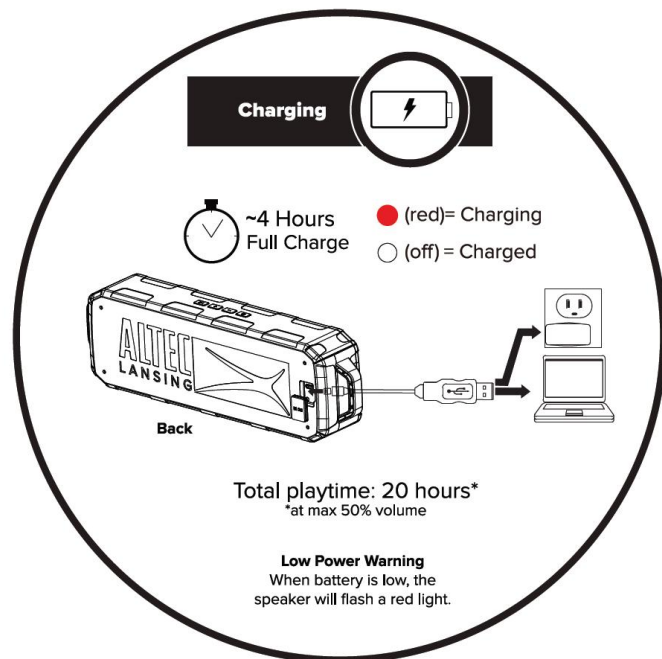
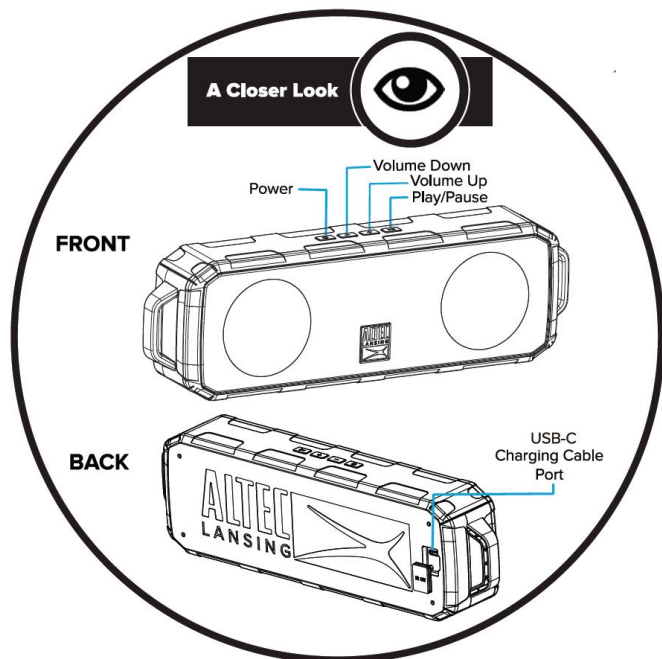
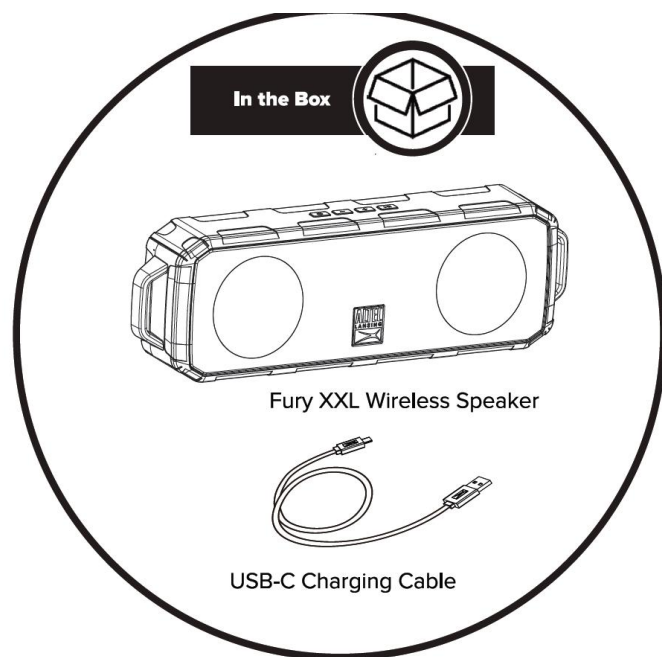
We love our customers, and we care  
about your experience with Altec  
Lansing. If you need  
assistance, please call us at  
1.855.292.4087  
or e-mail [alsupport@sakar.com](mailto:alsupport@sakar.com).

[www.altec Lansing.com](http://www.altec Lansing.com)

# Front



# Rear

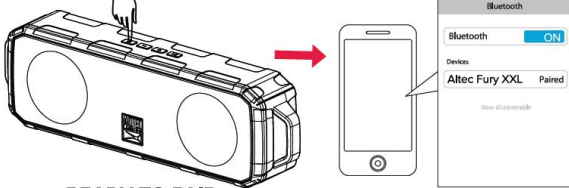


## Front

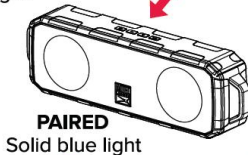
### Powering On/ Bluetooth Pairing



PRESS & HOLD 2-4 SEC TO POWER ON



**READY TO PAIR**  
Flashing blue and red light



**PAIRED**  
Solid blue light

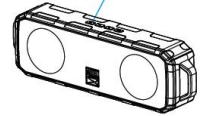
## Rear

### True Wireless Pairing



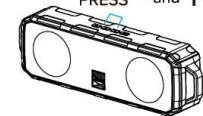
PRESS & HOLD

Turn on the first speaker and connect it to a Bluetooth compatible device. Then turn on the second speaker.



PRESS and

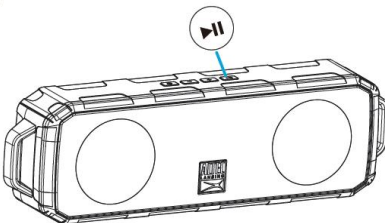
Short Press & on the first speaker. The two speakers will connect together so that the first plays the Left channel and the second plays the Right channel.



First Speaker

**TWS Disconnect:** short press - & + on either speaker, the two paired speakers are disconnected.

### Answering Calls



PRESS

Answer Call/  
End Call

PRESS & HOLD

Reject Call

### Controlling Music



#### PRESS

Play/Pause

Volume Up

Volume Down

#### PRESS & HOLD

Next Track

Previous Track

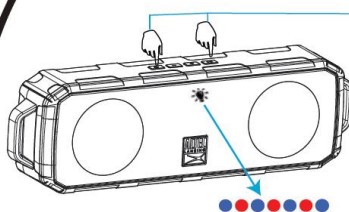
### Clearing Pairing



Press & Hold and

to disconnect Bluetooth and clear the pairing record.

The speaker will flash red and blue lights to indicate that it is ready to pair again.



For additional user materials and warranty information, please visit [alteclansing.com](http://alteclansing.com)

### FOLLOW US ON



#myalteclansing

Changes or modifications not expressly approved by the party responsible for compliance could void the user's authority to operate the equipment. This device complies with Part 15 of the FCC Rules. Operation is subject to the following two conditions: (1) this device may not cause harmful interference, and (2) this device must accept any interference received, including interference that may cause undesired operation.

This equipment has been tested and found to comply with the limits for a Class B digital device, pursuant to Part 15 of the FCC Rules. These limits are designed to provide reasonable protection against harmful interference in a residential installation. This equipment generates, uses and can radiate radio frequency energy and, if not installed and used in accordance with the instructions, may cause harmful interference to radio communications. However, there is no guarantee that interference will not occur in a particular installation.

If this equipment does cause harmful interference to radio or television reception, which can be determined by turning the equipment off and on, the user is encouraged to try to correct the interference by one or more of the following measures:

- Reorient or relocate the receiving antenna.
- Increase the separation between the equipment and receiver.
- Connect the equipment into an outlet on a circuit different from that to which the receiver is connected.
- Consult the dealer or an experienced radio/TV technician for help.

This equipment complies with FCC radiation exposure limits set forth for an uncontrolled environment.

This transmitter must not be co-located or operating in conjunction with any other antenna or transmitter.

Sakar International Inc.  
195 Carter Drive  
Edison, New Jersey 08817, USA  
855-292-4087  
[www.alteclansing.com](http://www.alteclansing.com)