

IMPORTANT

PLEASE DO NOT RETURN TO STORE

If You're Having Trouble, We're Here to Help!



Call us 24/7 at 1-855-292-4087
E-mail us at support@alteclansing.com or visit us at alteclansing.com

REGISTER YOUR PRODUCT

To receive news, exclusive deals, OTA or
firmware updates, warranty information and
more please register your product at

alteclansingsupport.com



WELCOME

Thank you for purchasing an
Altec Lansing product.
It's our goal to make sure you
are happy. Share your happiness
with our customer concierge.



follow us
@alteclansingofficial



follow us
@alteclansing



follow us
@alteclansingofficial

12 Month Limited Warranty

All Altec Lansing products come with
12 month limited warranty
from the date of its original purchase

24 Hour Customer Support

We love our customers, and we care
about your experience with Altec
Lansing. If you need
assistance, please call us at
1.855.292.4087
or e-mail alsupport@sakar.com

www.alteclansing.com

JUST LISTEN.

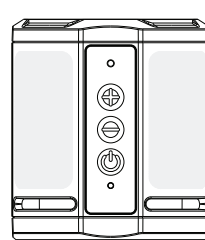
HydraMicro Everythingproof™ Wireless Speaker

IMW1021

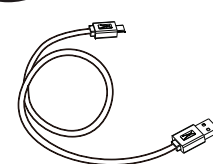
QUICK START GUIDE

IMW1020U-230921

In the Box



IMW1020 HydraMicro Everythingproof™
Wireless Speaker

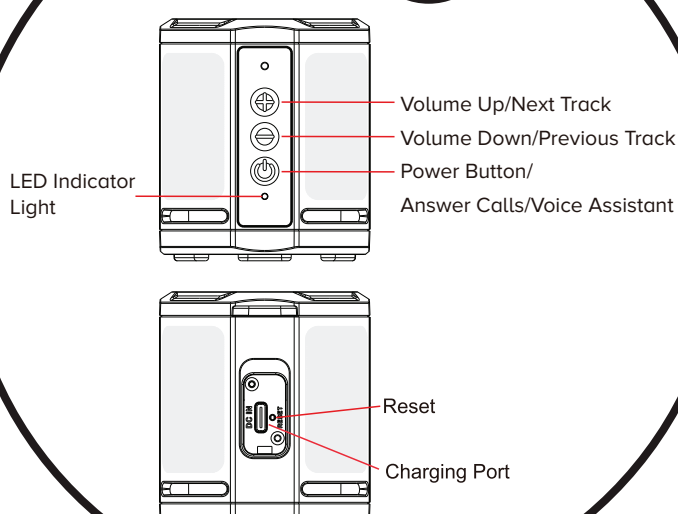


USB-C Charging Cable

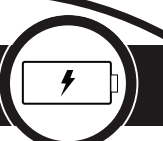


Strap

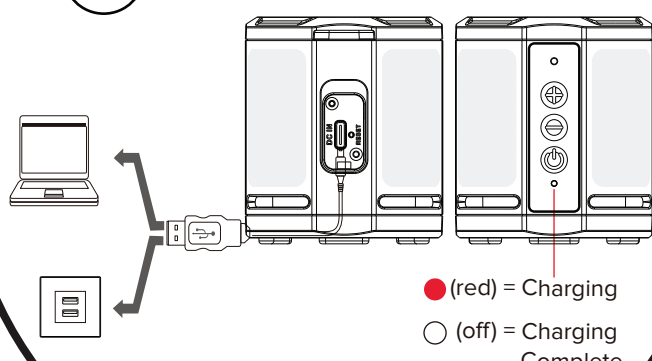
A Closer Look



Charging

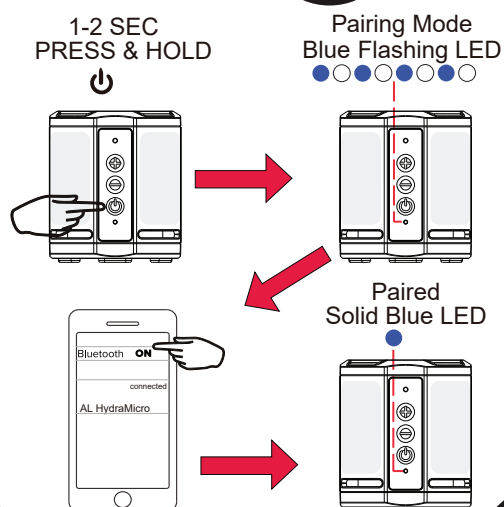


≈2-3 Hours
Full Charge



Battery Warning:
When power is low, the light
indicator will flash red 3 times.

Powering On/ Bluetooth Pairing

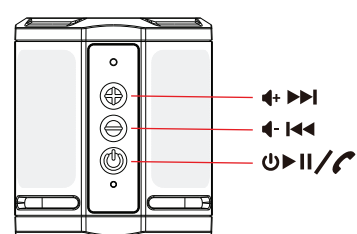


Speaker Controls



PRESS
⏮ Play/Pause
+ Volume Up
- Volume Down
⏭ Answer & End Call

PRESS & HOLD (2 sec)
⏻ ON/OFF
+ Next Track
- Previous Track
⏻ Reject Incoming Call



True Wireless Pairing



Turn on the first speaker and connect it
with a Bluetooth compatible device.

Turn on the second speaker and press
and hold its **⏻** and **⏮** buttons for 1-2 seconds.

Press and hold the **⏻** & **⏮** buttons for 1-2
seconds on the first speaker. The first
speaker will now connect to the
second so they both play in sync.
The Indicator LEDs will illuminate green.
"To end TWS press & hold the power button
on either speaker"

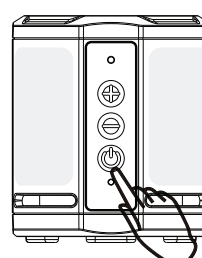
Using True Wireless Pairing, this speaker will also pair with
IMW1000 HydraMini, IMW1050 HydraOrbit,
and IMW1100 HydraMotion.

Voice Assistant / Reset



Press x2 **⏻**
To activate Voice Assistant
(Siri or Google Assistant)
when connected to phone.

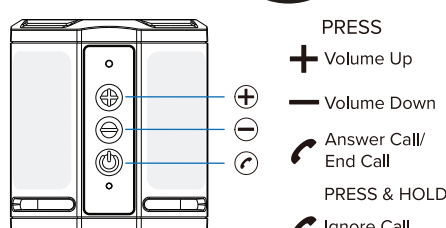
Reset- Press & Hold
Volume **⏻** & **⏮**
Disconnect Bluetooth: Press
and hold for ten seconds and
the speaker will beep
Reset All connections: Press
and hold for ten seconds and
the speaker will power off. All
pairing information is reset.



Blue and red lights will flash
from the light indicator while
speaker resets.

Overall battery performance varies dependent upon
use setting, and environmental conditions. For
further information, please visit
www.alteclansing.com

Answering Calls



Specifications:

Battery 3.7V/400mAh
Charging Voltage 5V
Charging Current 350mA
Bluetooth version V5.0
Bluetooth Range ≥10m or 33ft
Waterproof Rating IPX7
Charging Time Approx. 2 Hours
Play Time Approx. 6 Hours*

When volume is played at 50% or lower

FOLLOW US ON



#myalteclansing

Changes or modifications not expressly approved by the party responsible
for compliance could void the user's authority to operate the equipment. This
device complies with Part 15 of the FCC Rules. Operation is subject to the
following two conditions: (1) this device may not cause harmful interference, and
(2) this device must accept any interference received, including interference that
may cause undesired operation.

This equipment has been tested and found to comply with the limits for a
Class B digital device, pursuant to Part 15 of the FCC Rules. These limits are
designed to provide reasonable protection against harmful interference in a
residential installation. This equipment generates, uses and can radiate radio
frequency energy and, if not installed and used in accordance with the
instructions, may cause harmful interference to radio communications. However,
there is no guarantee that interference will not occur in a particular installation.
If this equipment does cause harmful interference to radio or television
reception, which can be determined by turning the equipment off and on, the user
is encouraged to try to correct the interference by one or more of the following
measures:
- Reorient or relocate the receiving antenna.
- Increase the separation between the equipment and receiver.
- Connect the equipment into an outlet on a circuit different from that to
which the receiver is connected.
- Consult the dealer or an experienced radio/TV technician for help.

This equipment complies with FCC radiation exposure limits set forth for an
uncontrolled environment.

This transmitter must not be co-located or operating in conjunction with any
other antenna or transmitter.

Sakar International Inc.
195 Carter Drive
Edison, New Jersey 08817, USA
855-292-4087
www.alteclansing.com